

PALOMINO HILLS

PART OF BLOCKS 1, 2, 3, AND 4

1115 OFF 400

(FIRST PLATTING)

CURVE DATA

CURVE ①
B. 59°46'32"
D. 76°23'39"
R. 75.00'
T. 52.12'
L. 102.45'

CURVE ②
B. 100°13'28"
D. 76°23'39"
R. 75.00'
T. 59.74'
L. 131.94'

HUMMINGBIRD HILL

TENTATIVELY PLATTED

58945281E
30500'

58945281E
13.47'

BLOCK 1

RUGGLES

STREET

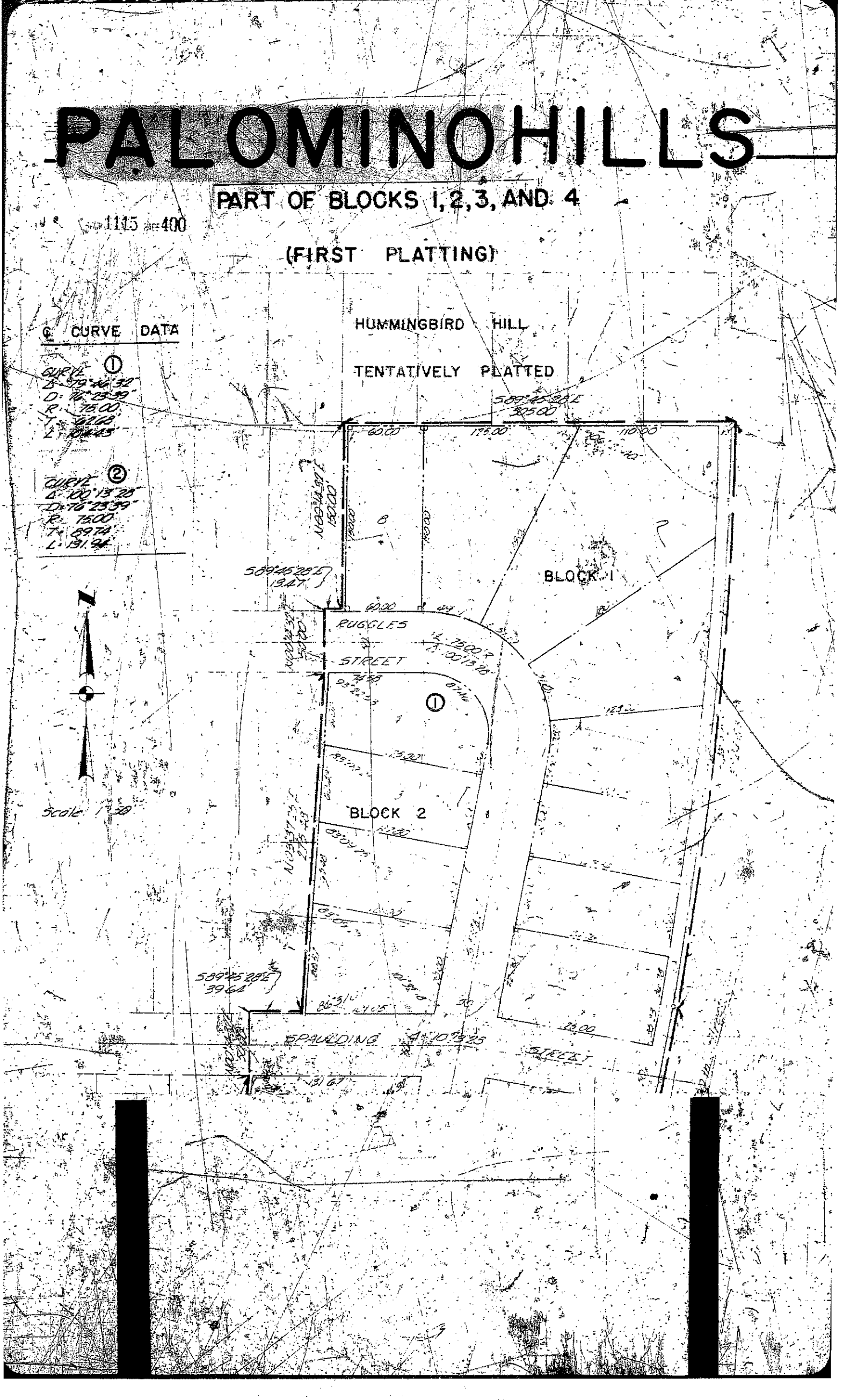
BLOCK 2

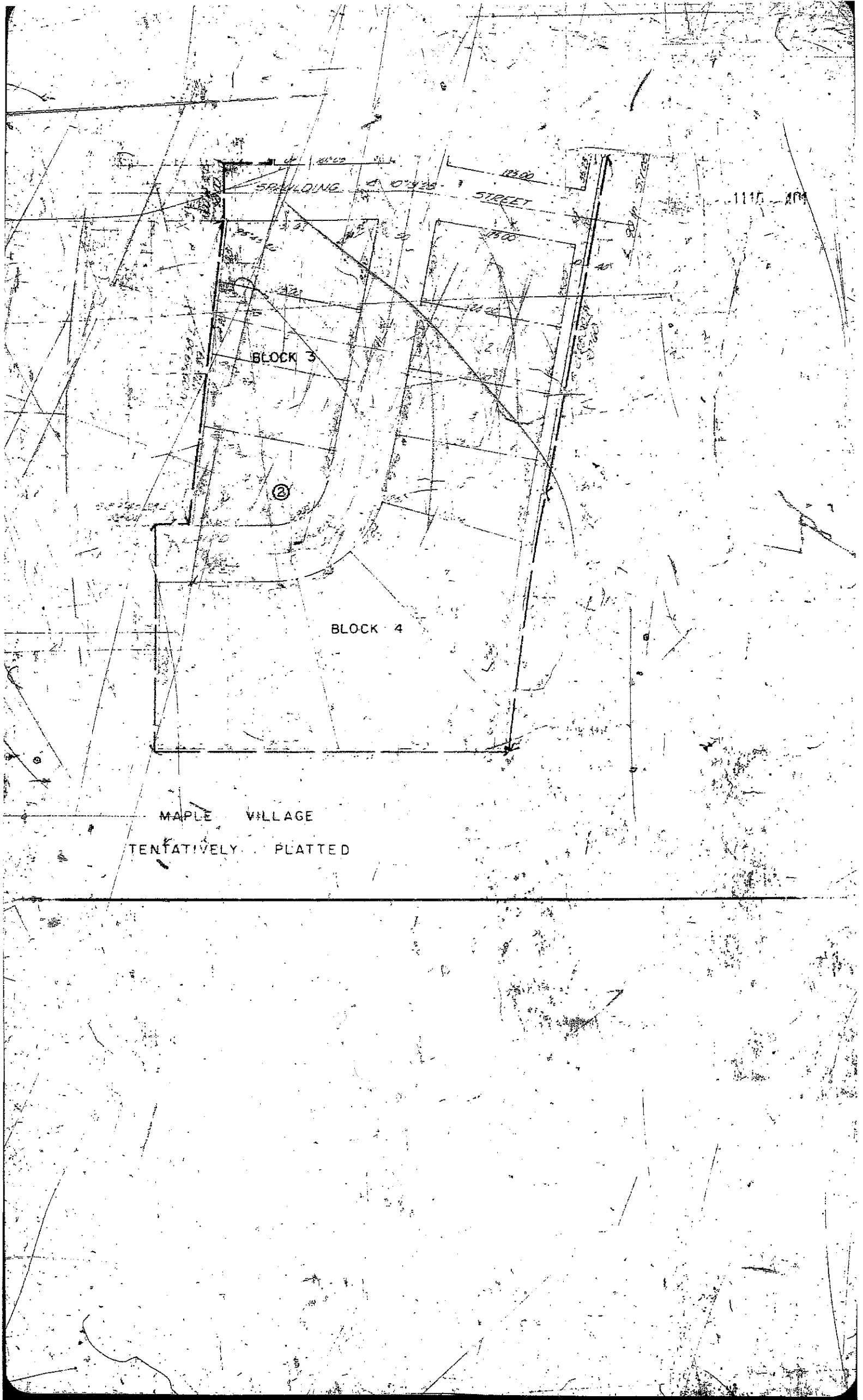
SPAUDING

STREET



Scale: 1" = 50'





SPRAWLING STREET

1115

BLOCK 3

BLOCK 4

MAPLE VILLAGE
TENTATIVELY PLATTED

APPROVAL OF OMAHA CITY PLANNING BOARD

This plot of Part of Blocks 1, 2, 3 and 4 of Palomiro Hills was approved by the City Planning Board of the City of Omaha this 22 day of March A.D. 1961.

Jesse T. Schrader
Chairman of the City Planning Board

APPROVAL OF CITY ENGINEER OF OMAHA

I hereby approve this plot of Part of Blocks 1, 2, 3 and 4 of Palomiro Hills this 23rd day of March A.D. 1961.

D. P. A. Bond
City Engineer

OMAHA CITY COUNCIL ACCEPTANCE

This plot of Part of Blocks 1, 2, 3, and 4 of Palomiro Hills was approved and accepted by the City Council of the City of Omaha on this 18 day of April A.D. 1961.

John R. Larson
Mayor

W. H. Manning
City Clerk

ACKNOWLEDGEMENT OF GRADING

I hereby certify that the streets within this plot are graded to the grades approved by the City Engineer and filed with the City. Dated this 18 day of March A.D. 1961.

Carl F. Muscellio PE
Carl J. Nussrollah PE

COUNTY TREASURER'S CERTIFICATE

This is to certify that I find no regular or special taxes due or delinquent against the property described in Surveyor's Certificate and embraced in this plot as shown by records of this office.

Date March 20 A.D. 1961

Samuel Powell
County Treasurer

THE SURVEYOR'S CERTIFICATE

I, Charles W. Albern, Registered Land Surveyor in the State of Nebraska, do hereby certify that I have accurately surveyed and staked with iron pipes all corners of all lots, streets, angle points and the ends of all curves as shown on this plat of Part of Blocks 1, 2, 3, and 4, of Palomino Hills. The limits and boundaries of said blocks are as follows:

A tract of land lying wholly within the SE 1/4 of the SW 1/4 of Section 3, Township 13 North, Range 12 East of the 6th PM, Douglas County, Nebraska, and more particularly described as follows:

Beginning at a point on the south line of said SW 1/4, said point being 175.73 feet west of the SE corner of the SW 1/4 of said Section 3; thence west along the south line of said SW 1/4 on a bearing of N 89° 45' 28" W a distance of 300.00 feet to a point; thence N 00° 14' 32" E a distance of 200.00 feet to a point; thence S 89° 45' 28" E a distance of 29.02 feet to a point; thence N 03° 59' 50" E a distance of 279.39 feet to a point; thence N 08° 14' 32" E a distance of 50.00 feet to a point; thence S 89° 45' 28" E a distance of 39.64 feet to a point; thence N 03° 37' 25" E a distance of 275.45 feet to a point; thence N 00° 14' 32" E a distance of 50.00 feet to a point; thence S 89° 45' 28" E a distance of 13.47 feet to a point; thence N 00° 14' 32" E a distance of 150.00 feet to a point; thence S 89° 45' 28" E a distance of 305.00 feet to a point on the west R.O.W. of 20th Street; thence south-westerly along a curve to the right, said curve having a radius 2824.83 feet a distance of 473.27 feet to a point; thence S 14° 28' 00" W a distance of 307.60 feet to a point; thence south-easterly along a curve to the left, said curve having a radius of 2902.83 feet, a distance of 290.43 feet to the point of beginning and containing 7.03 acres more or less.

Date March 18 A.D. 1961

Charles W. Albern
Charles W. Albern
Registered Land Surveyor, LS 112

DEDICATION

Know All Men By These Presents:

That we, W. B. Hargleroad Jr. and Winifred Adams respectively the President and Secretary of Hargleroad Maenner, Inc, a Corporation, sole owners and proprietors, Christ M. Karr and Clara L. Karr, husband and wife, Mortgagees of the land described in the Surveyor's Certificate and embraced within this plat have caused the same to be subdivided into blocks, lots, and streets, said subdivision to be known hereafter as Part of Blocks 1, 2, 3, and 4, of Palomino Hills, the blocks and lots numbered as shown and we hereby ratify and approve the description of the property as shown on this plat and we hereby dedicate to the public for public use the streets as shown herein.

In witness, whereof, we do hereunto set our hands this 16th day of March A.D. 1961

Hargleroad Maenner, Inc.

W. B. Hargleroad Jr. President and
W. B. Hargleroad Jr.

Winifred Adams Secretary
Winifred Adams

Mortgagees:

Christ M. Karr and Clara L. Karr, husband and wife
Christ M. Karr and Clara L. Karr, husband and wife

ACKNOWLEDGEMENT OF NOTARY

State of Nebraska }
County of Douglas } 55

On this 16th day of March A.D. 1961 before me a Notary Public, duly commissioned and qualified in and for said County, came Chrisl M. Karr and Clara L. Karr, who are personally known to me to be the identical persons whose names are affixed to the dedication on this plot and they acknowledge the signing to said dedication to be their voluntary act and deed.

Witness my hand and official seal the last date aforesaid

Joan M. Hoole
Notary Public

My commission expires on 29 day of Sept. A.D. 1966

CORPORATION ACKNOWLEDGEMENT

State of Nebraska }
County of Douglas } 55

On this 16th day of March A.D. 1961, before me the undersigned, a Notary Public in and for said County, personally came the above named, W. B. Hargleroad Jr., President, and Winifred Adams, Secretary, of Hargleroad Maermer, Inc. (a Corporation) who are personally known to me to be the identical persons whose names are affixed to the within instrument as President and Secretary to said Corporation, and they acknowledge the execution thereof to be their voluntary act and deed as such officers and the voluntary act and deed of said Corporation and that the Corporate Seal of said Corporation was thereto affixed by its authority.

Witness my hand and official seal this last date aforesaid

Joan M. Hoole
Notary Public

My commission expires on 29 day of Sept. A.D. 1966

KIRKHAM MICHAEL & ASSOCIATES
ENGINEERS ARCHITECTS
OMAHA RAPID CITY FARGO