

CORRECTIVE PLAT
PER AFFIDAVIT OF DECEMBER 13, 1994

OSAGE ACRES

LOTS 1 THRU 6 INCLUSIVE

BEING A PLATTING OF PART OF THE SOUTHEAST QUARTER OF THE SOUTHWEST QUARTER OF SECTION 26
NSHIP 15 NORTH, RANGE 9 EAST OF THE 6th PM, AS SURVEYED & RECORDED IN SAUNDERS COUNTY, NEBR.

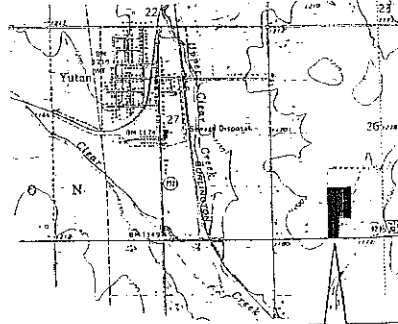
NORTH



1" = 100'

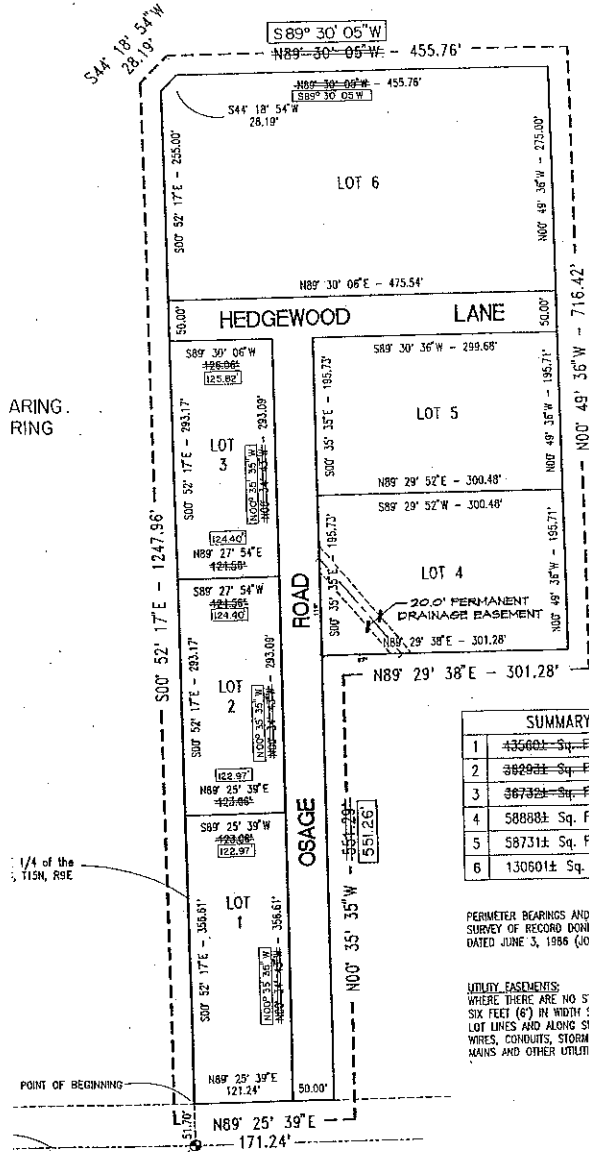
OWNER AND SUBDIVIDER:

MICHAEL & JANET NELSON
RR 1, BOX 7101
YUTAN, NEBR. 68078-1141



OSAGE ACRES

LOCATION MAP



SUMMARY OF AREAS	
1	43660± Sq. Ft. 1.000± Acres
2	36292± Sq. Ft. 0.833± Acres
3	36732± Sq. Ft. 0.843± Acres
4	58888± Sq. Ft. 1.352± Acres
5	58731± Sq. Ft. 1.348± Acres
6	130501± Sq. Ft. 2.998± Acres

43544± Sq. Ft.	0.992± Acres
36255± Sq. Ft.	0.832± Acres
36673± Sq. Ft.	0.842± Acres

BUILDING SETBACK REQUIREMENTS

FRONT YARD	30 FEET
SIDE YARD	7 FEET
REAR YARD	35 FEET

PERMETER BEARINGS AND DISTANCES AS SHOWN HEREON ARE TAKEN FROM SURVEY OF RECORD DONE BY JOHNSON ERICKSEN O'BRIEN & ASSOCIATES, DATED JUNE 3, 1986 (JOB NO. SU-854)

UTILITY EASEMENTS:
WHERE THERE ARE NO STREETS OR ALLEYS, EASEMENTS OF AT LEAST SIX FEET (6') IN WIDTH SHALL BE PROVIDED ON EACH SIDE OF ALL REAR LOT LINES AND ALONG SIDE LOT LINES WHERE NECESSARY FOR POLES, WIRES, CONDUITS, STORM AND SANITARY SEWERS, GAS, WATER AND HEAT MAINS AND OTHER UTILITIES.

REVIEW BY THE SAUNDERS COUNTY SURVEYOR

THIS PLAT OF OSAGE ACRES WAS REVIEWED BY THE SAUNDERS COUNTY SURVEYOR'S OFFICE ON THIS _____ DAY OF _____, 1994.

SEE ORIGINAL

APPROVAL OF YUTAN VILLAGE ENGINEER

I HEREBY APPROVE OF THIS PLAT OF OSAGE ACRES ON THIS _____ DAY OF _____

VILLAGE ENGINEER

DRAWN AND PREPARED BY:
LINE SURVEYS
ASSOCIATES, INC.
P.O. BOX 68144 • (402) 334-2032
J. OEHME CHECKED: M. R. KAUSS

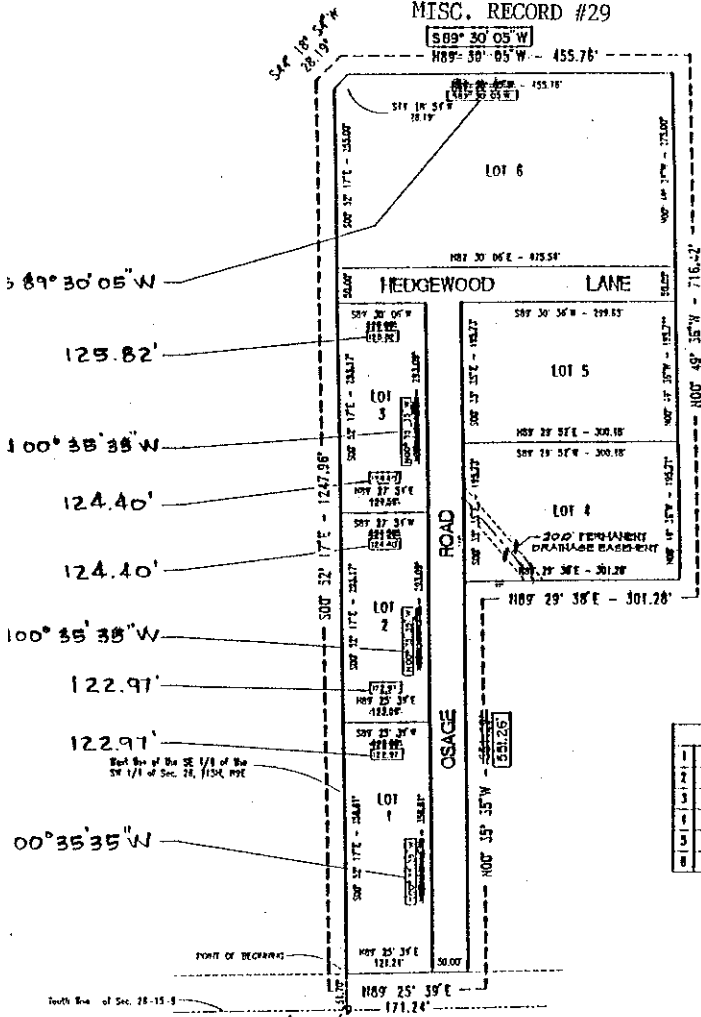
*Filed
1-13-95*

AFFIDAVIT OF CORRECTION

TO OSAGE ACRES, A SUBDIVISION IN SECTION 28
T15N, R9E, SAUNDERS COUNTY, NEBRASKA

MISC. RECORD #29

656



1" = 200'

(P) RECORD DISTANCE
(A) MEASURED DISTANCE

SUMMARY OF AREAS		
1	435004-Sq-Ft.	1.0001 Acres
2	382858-Sq-Ft.	0.8831 Acres
3	387328-Sq-Ft.	0.8843 Acres
4	588082-Sq-Ft.	1.3524 Acres
5	387312-Sq-Ft.	1.3481 Acres
6	1308012-Sq-Ft.	2.9981 Acres

735411 Sq. Ft.	1.6921 Acres
322551 Sq. Ft.	0.7421 Acres
326781 Sq. Ft.	0.7511 Acres

ACKNOWLEDGEMENT OF NOTARY

STATE OF NEBRASKA }
COUNTY OF SAUNDERS } SS

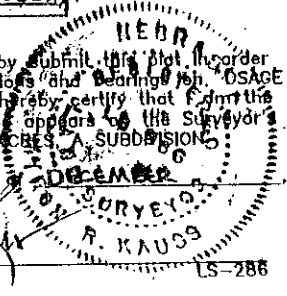
On this 13 day of December, 1994, before me, a notary public, duly commissioned and qualified in and for said county, did appear MYRON R. KAUSS, who is personally known by me to be the identical person whose name appears on this plat, and he did acknowledge his execution of the foregoing affidavit to be his voluntary act and deed.
Witness my hand and official seal the date last aforesaid.

Sharon Ann Kauss
NOTARY PUBLIC

My commission expires 10-24-94

AFFIDAVIT OF CORRECTION
I, Myron R. Kauss, do hereby submit this plat in order to correct errors in dimensions and bearings on "OSAGE ACRES, A SUBDIVISION". I hereby certify that I am the identical person whose name appears on the Surveyor's Certificate of said "OSAGE ACRES, A SUBDIVISION".

Signed this 13 day of December, 1994.
Myron R. Kauss
MYRON R. KAUSS



DON CLARK
REGISTER OF DEEDS
SAUNDERS CO. NEBR.

1995 JAN 13 PM 1:43
BOOK 29 PAGE 656
OF PLSS INST# 155
BY [Signature]