

NORTH HILLS 2ND ADDITION

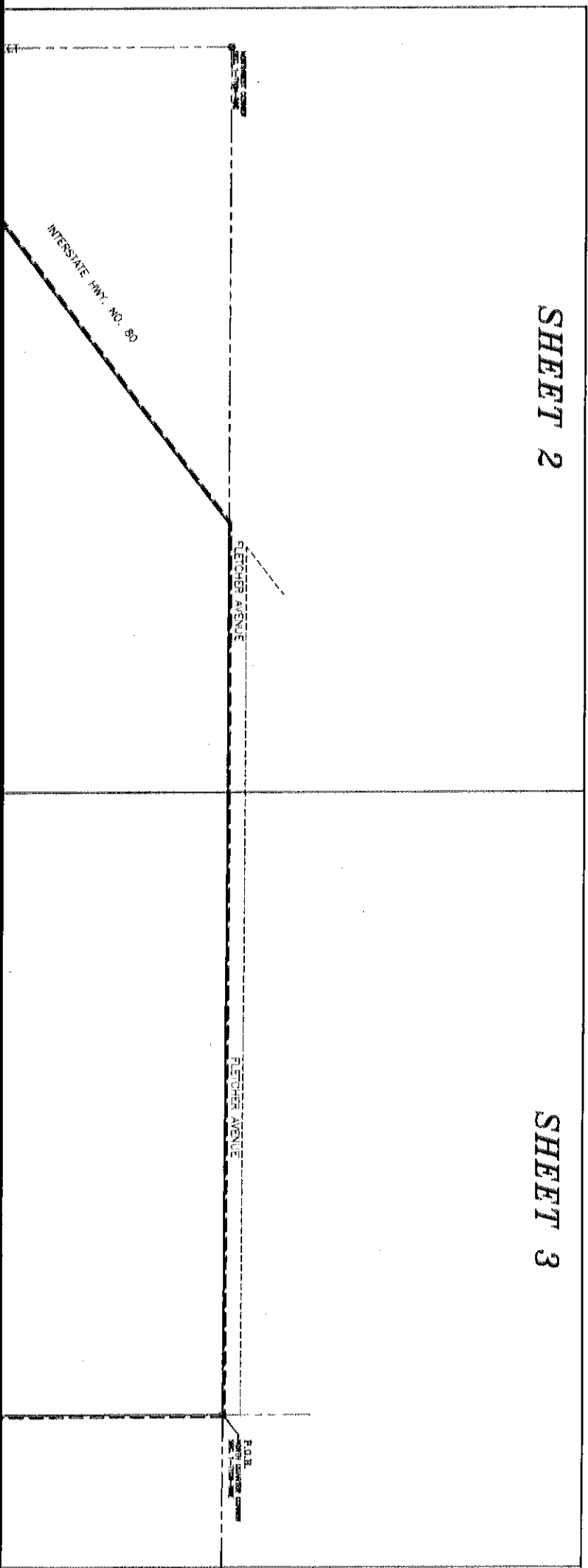
FINAL PLAT

INDEX OF SHEETS

- SHEET 1: COVER SHEET
- SHEET 2: PLAT DRAWING
- SHEET 3: PLAT DRAWING, CURVE DATA AND LOT AREA TABLE
- SHEET 4: PLAT DRAWING
- SHEET 5: PLAT DRAWING
- SHEET 6: SURVEYORS CERTIFICATE AND PLANNING COMMISSION APPROVAL
- SHEET 7: DEDICATION, ACKNOWLEDGEMENTS AND LIEN HOLDERS CONSENT & SUBORDINATION

SHEET 2

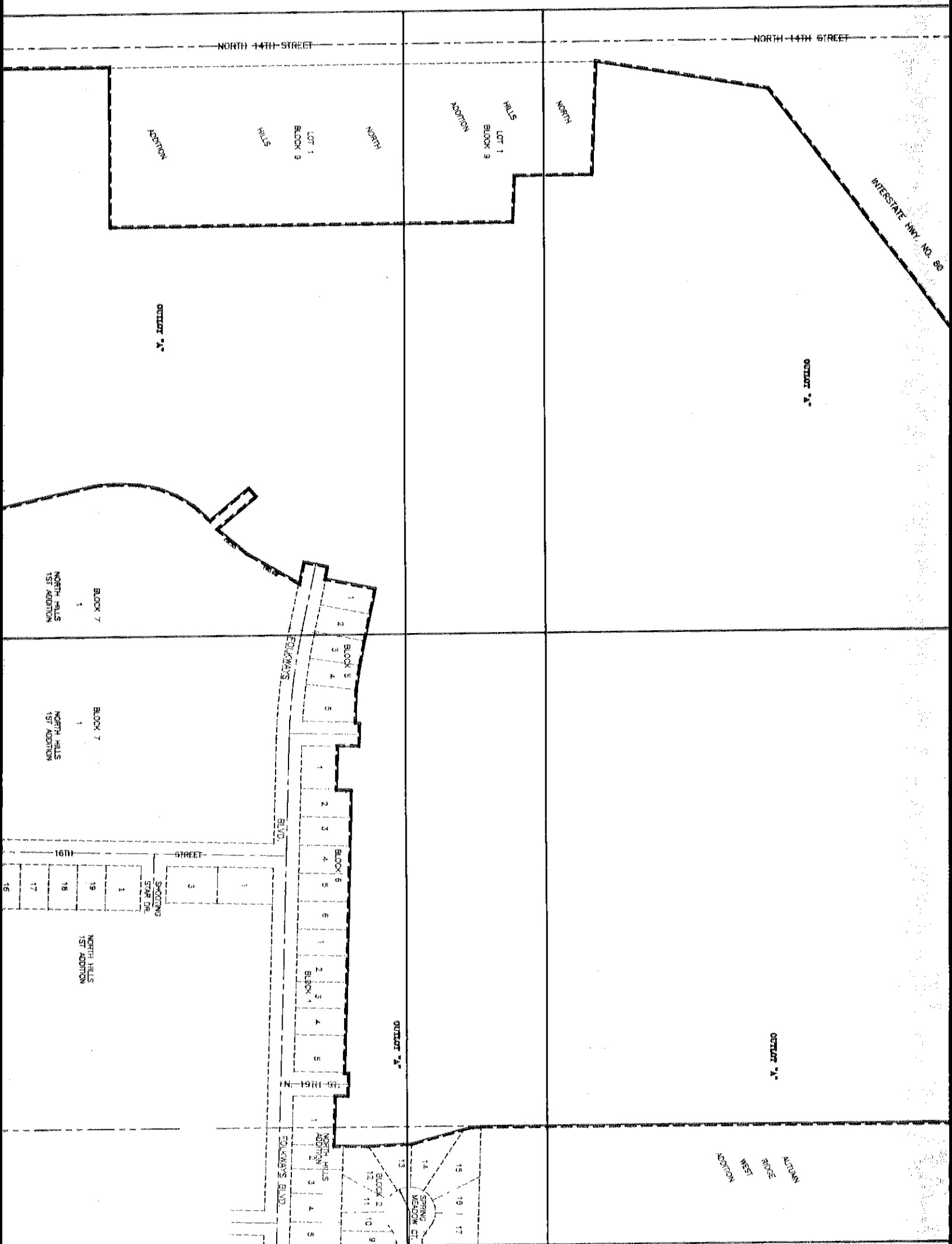
SHEET 3



Dan J. Little
 REGISTERED PROFESSIONAL ENGINEER
 2000 APR 13 A 10:56
 LANCASTER COUNTY, NE

\$161.50
 REG. NO. 2901
 018090
 #3582

BLOCK
 CODE
 NORTH
 CHECKED
 ENTERED
 2012



NORTH-14TH STREET

NORTH-14TH STREET

INTERSTATE HWY. NO. 80

NORTH
HILLS
LOT 1
BLOCK 9
ADDITION

NORTH
HILLS
LOT 1
BLOCK 9
ADDITION

NORTH

OUTLOT 'A'

OUTLOT 'A'

BLOCK 7
1
NORTH HILLS
1ST ADDITION

BLOCK 7
1
NORTH HILLS
1ST ADDITION

EQUKAWAS
BLVD.

EQUKAWAS
BLVD.

OUTLOT 'A'

OUTLOT 'A'

16TH STREET

STREET

15TH STREET

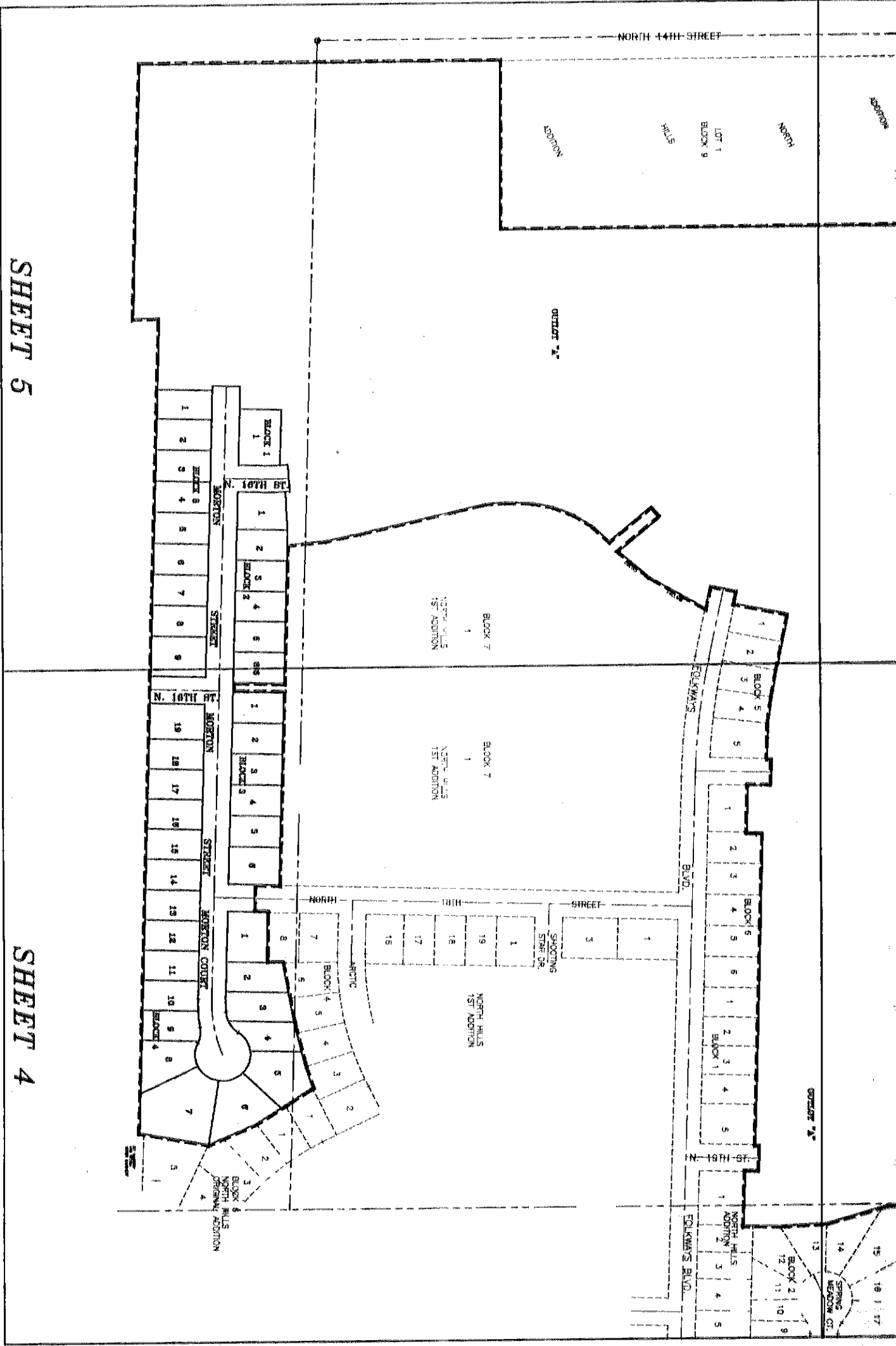
EQUKAWAS BLVD.

SPRING
MEADOW CT.

NORTH HILLS
1ST ADDITION

AUTUMN
RISE
WEST
ADDITION

BLOCK 2
12 11 10 9
13 14 15 16 17



SHEET 5

SHEET 4

NORTH HILLS 2ND ADDITION FINAL PLAT

NORTHWEST CORNER
SEC. 1-TION-RGE

1722.92'R
FLETCHER AVENUE
1723.22'
S89°48'58"E 1723.22'M
1723.22'

NO. 80

MR

NORTH 14TH STREET

$N09^{\circ}44'54''E$ 407.03' M&R

407.03'

120.77'

50.83'

$N87^{\circ}48'35''W$ 272.53' M&R

272.53'

INTERSTATE HWY. NO. 80

$N53^{\circ}25'21''E$ 979.30' M&R

979.30'

OUTLOT "A"

BLANKET UTILITY EASEMENT

THIS AREA IS RESERVED FOR FUTURE
DEVELOPMENT AFTER FINAL PLATTING IN
ACCORDANCE WITH THE APPROVED
PRELIMINARY PLAT ON FILE WITH THE
CITY OF LINCOLN.

SCALE: 1"=100'



MATCH LINE SEE SHEET 3

N09°44'54"E 407.03' M&R
407.03'

50.83'
N87°48'35"W 272.53' M&R
272.53'

N00°08'46"W 182.00' M&R
182.00'

109.58'
N87°48'35"W 109.58' M&R

N00°10'08"W 948.72' M&R
948.72'

NORTH
HILLS
ADDITION
LOT 1
BLOCK 9

20651-2

MATCH LINE SEE SHEET 5

F:\PROJECTS\20000570\WORK\LANDADD\NSHEET2A.DWG 2210 45259

SHEET 2 OF 7

NORTH HILLS 2ND ADDITION FINAL PLAT

1722.92'R

S89°48'58"E 1723.22'M

1723.22'

FLETCHER AVENUE

P.O.B.
NORTH QUARTER CORNER
SEC. 1-TION-R6E

LOT AREA TABLE

BLOCK 1

LOT NUMBER	AREA IN SF.	AREA IN AC.
LOT 1	11,234.67 SF.	0.26 AC.

BLOCK 2

LOT NUMBER	AREA IN SF.	AREA IN AC.
LOT 1	8,970.39 SF.	0.21 AC.
LOT 2	7,605.26 SF.	0.17 AC.

LOT 1 11,234.67 SF. 0.26 AC.

BLOCK 2

LOT NUMBER	AREA IN SF.	AREA IN AC.
LOT 1	8,970.39 SF.	0.21 AC.
LOT 2	7,608.26 SF.	0.17 AC.
LOT 3	7,607.60 SF.	0.17 AC.
LOT 4	7,607.60 SF.	0.17 AC.
LOT 5	7,607.60 SF.	0.17 AC.
LOT 6	7,610.91 SF.	0.17 AC.

BLOCK 3

LOT NUMBER	AREA IN SF.	AREA IN AC.
LOT 1	7,612.01 SF.	0.17 AC.
LOT 2	7,612.00 SF.	0.17 AC.
LOT 3	7,612.00 SF.	0.17 AC.
LOT 4	7,612.00 SF.	0.17 AC.
LOT 5	7,612.00 SF.	0.17 AC.
LOT 6	9,126.31 SF.	0.21 AC.

BLOCK 4

LOT NUMBER	AREA IN SF.	AREA IN AC.
LOT 1	9,686.17 SF.	0.22 AC.
LOT 2	8,578.93 SF.	0.20 AC.
LOT 3	9,117.05 SF.	0.21 AC.
LOT 4	8,193.57 SF.	0.19 AC.
LOT 5	12,762.23 SF.	0.29 AC.
LOT 6	13,437.28 SF.	0.31 AC.
LOT 7	21,392.81 SF.	0.49 AC.
LOT 8	10,519.56 SF.	0.24 AC.
LOT 9	8,273.24 SF.	0.19 AC.
LOT 10	7,983.81 SF.	0.18 AC.
LOT 11	7,973.36 SF.	0.18 AC.
LOT 12	7,972.92 SF.	0.18 AC.
LOT 13	7,972.47 SF.	0.18 AC.
LOT 14	7,972.03 SF.	0.18 AC.
LOT 15	7,971.58 SF.	0.18 AC.
LOT 16	7,971.14 SF.	0.18 AC.
LOT 17	7,970.69 SF.	0.18 AC.
LOT 18	7,970.25 SF.	0.18 AC.
LOT 19	9,503.50 SF.	0.22 AC.

BLOCK 5

LOT NUMBER	AREA IN SF.	AREA IN AC.
LOT 1	7,717.02 SF.	0.18 AC.
LOT 2	8,192.37 SF.	0.19 AC.
LOT 3	8,311.58 SF.	0.19 AC.
LOT 4	8,312.07 SF.	0.19 AC.
LOT 5	8,311.58 SF.	0.19 AC.
LOT 6	8,313.04 SF.	0.19 AC.
LOT 7	8,313.52 SF.	0.19 AC.
LOT 8	8,314.01 SF.	0.19 AC.
LOT 9	10,690.15 SF.	0.25 AC.

OUTLOTS

LOT NUMBER	AREA IN SF.	AREA IN AC.
------------	-------------	-------------



SCALE: 1"=100'

OUTLOT "A"
 BLANKET UTILITY EASEMENT
 THIS AREA IS RESERVED FOR FUTURE
 DEVELOPMENT AFTER FINAL PLATTING IN
 ACCORDANCE WITH THE APPROVED
 PRELIMINARY PLAT ON FILE WITH THE
 CITY OF LINCOLN.

CURVE DATA

- Ⓐ Δ=05°28'14" Ⓑ Δ=24°10'29"
 R=600.00' R=300.00'
 T=28.67' T=64.24'
 L=57.29' L=126.58'
 LC=57.27' LC=125.64'
 CB=N01°11'42"W CB=N79°27'11"E
- Ⓒ Δ=01°58'31" Ⓓ Δ=03°31'47"
 R=370.00' R=280.00'
 T=6.38' T=8.63'
 L=12.76' L=17.25'
 LC=12.75' LC=17.25'
 CB=S50°44'18"W CB=S49°57'39"W

1260.58'R
 S00°02'19"E 1259.83'M

AUTUMN
 RIDGE
 WEST
 ADDITION

OUTLOT "A"
 BLANKET UTILITY EASEMENT
 THIS AREA IS RESERVED FOR FUTURE
 DEVELOPMENT AFTER FINAL PLATING IN
 ACCORDANCE WITH THE APPROVED
 PRELIMINARY PLAT ON FILE WITH THE
 CITY OF LINCOLN.

1259.83'
 02°19' E 1259.83' M
 1260.98' R

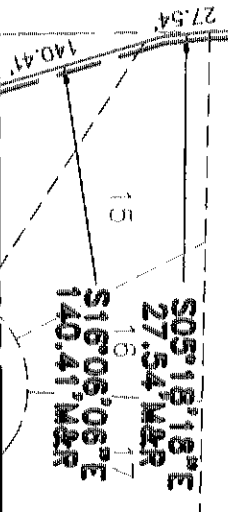
RIDGE
 WEST
 ADDITION

CURVE DATA

- Ⓐ Δ=05°28'14" Ⓑ Δ=24°10'29"
 R=600.00' R=300.00'
 T=28.67' T=64.24'
 L=57.29' L=126.58'
 LC=57.27' LC=125.64'
 CB=N01°1'42"W CB=N79°27'11"E
- Ⓒ Δ=01°58'31" Ⓓ Δ=03°31'47"
 R=370.00' R=280.00'
 T=6.38' T=8.63'
 L=12.76' L=17.25'
 LC=12.75' LC=17.25'
 CB=S50°44'18"W CB=S49°57'39"W

BLOCK 5

LOT NUMBER	AREA IN SF.	AREA IN AC.
LOT 1	7,717.02 SF.	0.18 AC.
LOT 2	8,192.37 SF.	0.19 AC.
LOT 3	8,311.58 SF.	0.19 AC.
LOT 4	8,312.07 SF.	0.19 AC.
LOT 5	8,311.58 SF.	0.19 AC.
LOT 6	8,313.04 SF.	0.19 AC.
LOT 7	8,313.52 SF.	0.19 AC.
LOT 8	8,314.01 SF.	0.19 AC.
LOT 9	10,690.15 SF.	0.25 AC.
OUTLOTS		
LOT NUMBER	AREA IN SF.	AREA IN AC.
OUTLOT "A"	14,700,753.42 SF.	107.91 AC.



MATCH LINE SEE SHEET 4

SHEET 3 OF 7

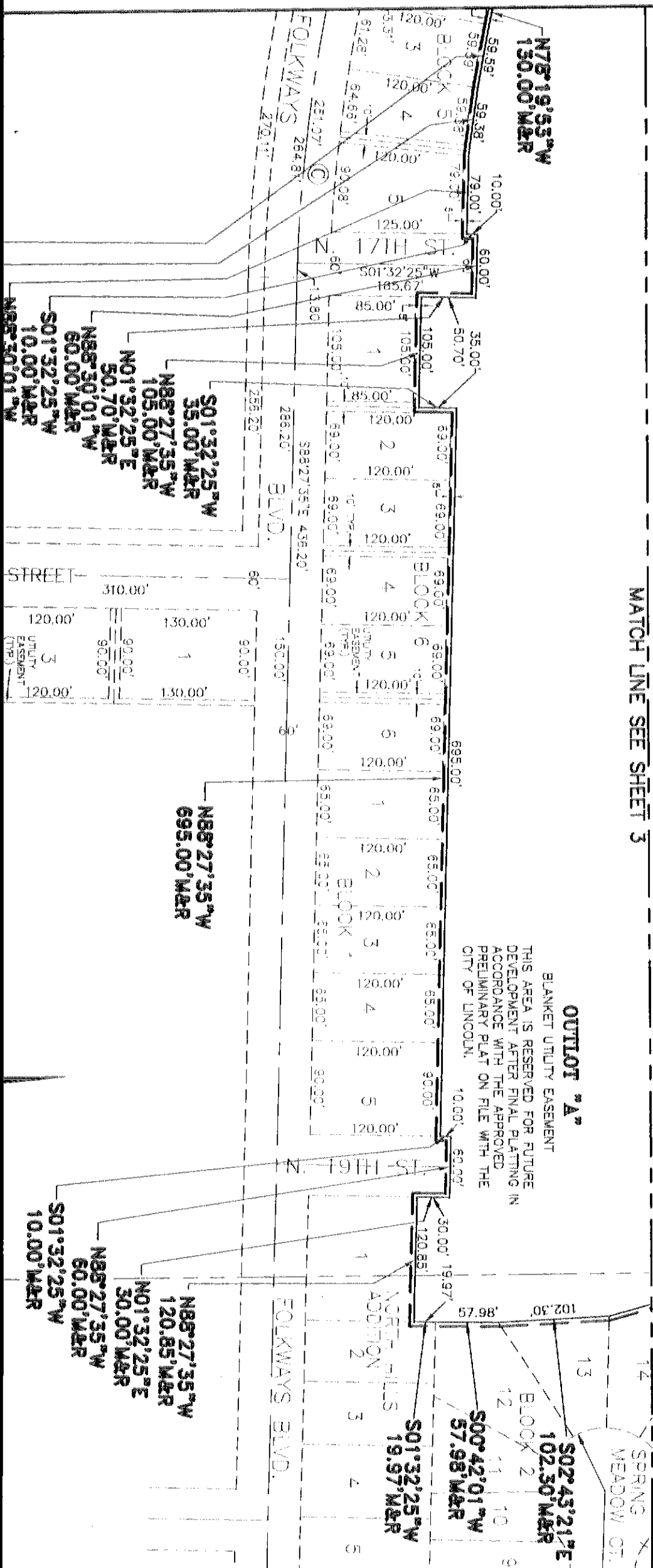
F:\PROJECTS\20000570\N&K&J\N&D\DD\3\SHEET34.DWG 22101 45215

20651-3

NORTH HILLS 2ND ADDITION FINAL PLAT

MATCH LINE SEE SHEET 3

OUTLOT "A"
BLANKET UTILITY EASEMENT
THIS AREA IS RESERVED FOR FUTURE
DEVELOPMENT AFTER FINAL PLATTING IN
ACCORDANCE WITH THE APPROVED
PRELIMINARY PLAT ON FILE WITH THE
CITY OF LINCOLN.

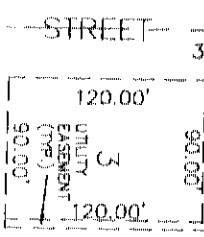
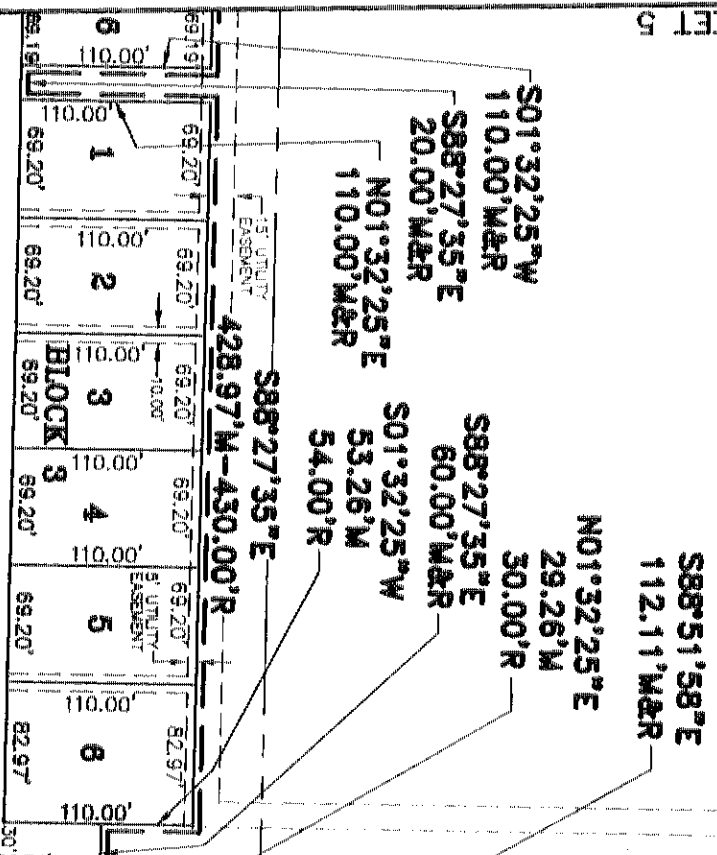


S01°32'25"W
 110.00'M&R
 S88°27'35"E
 20.00'M&R
 N01°32'25"E
 110.00'M&R
 S88°27'35"E
 110.00'M&R
 N81°58'50"W
 59.38'M&R
 N79°27'35"W
 59.59'M&R
 S01°32'25"W
 10.00'M&R
 N85°30'01"W
 79.00'M&R
 N88°30'01"W
 60.00'M&R
 S01°32'25"W
 60.00'M&R
 N88°30'01"W
 60.00'M&R

NORTH HILLS
1ST ADDITION

BLOCK 7

15' UTILITY EASEMENT



SHOOTING
STAR DR.

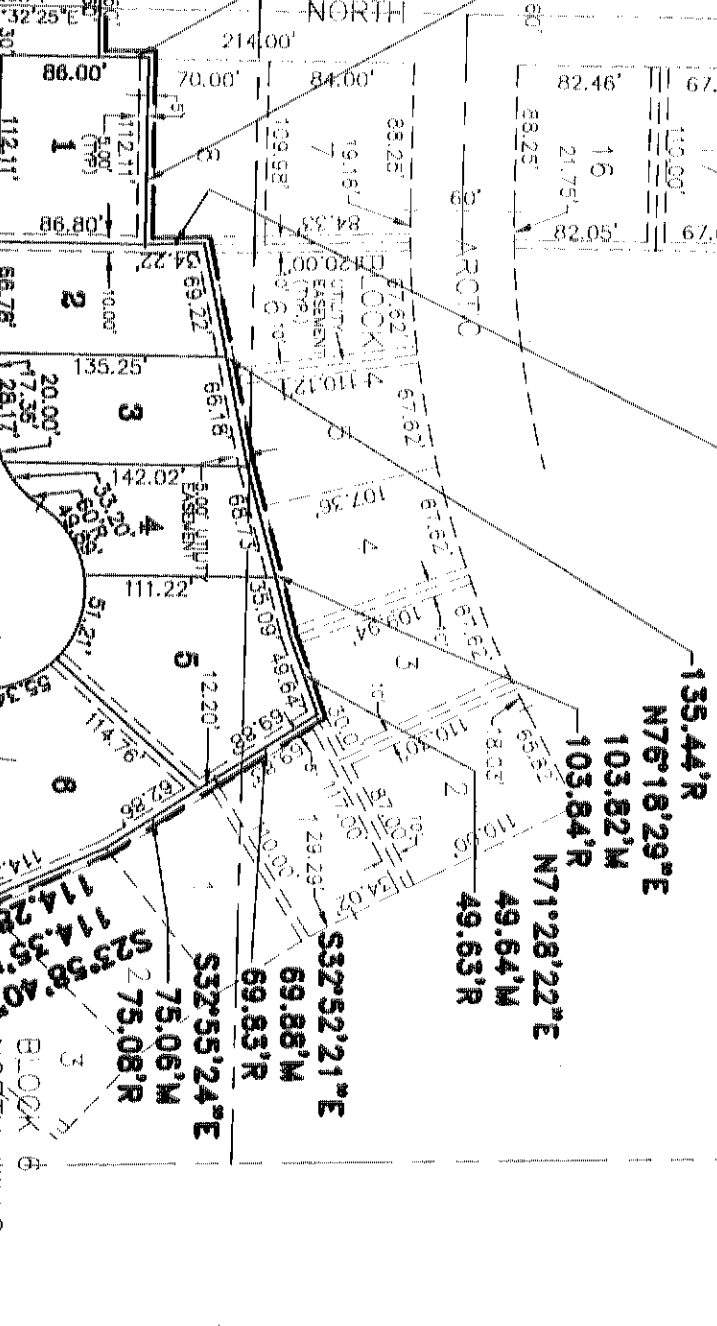
NORTH HILLS
1ST ADDITION

SCALE: 1"=100'



N88°27'35"W
 60.00'M&R
 S01°32'25"W
 10.00'M&R

N00°05'20"W
 34.22'M
 34.36'R
 N79°39'59"E
 135.40'M
 135.44'R
 N76°18'29"E
 103.82'M
 103.84'R
 N71°28'22"E
 49.64'M
 49.63'R

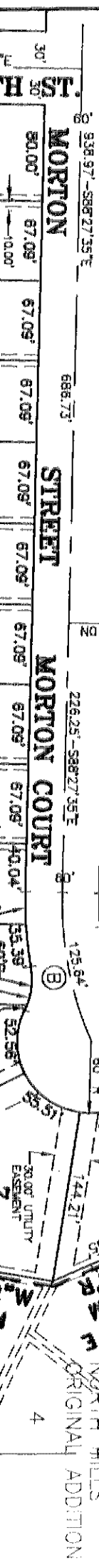


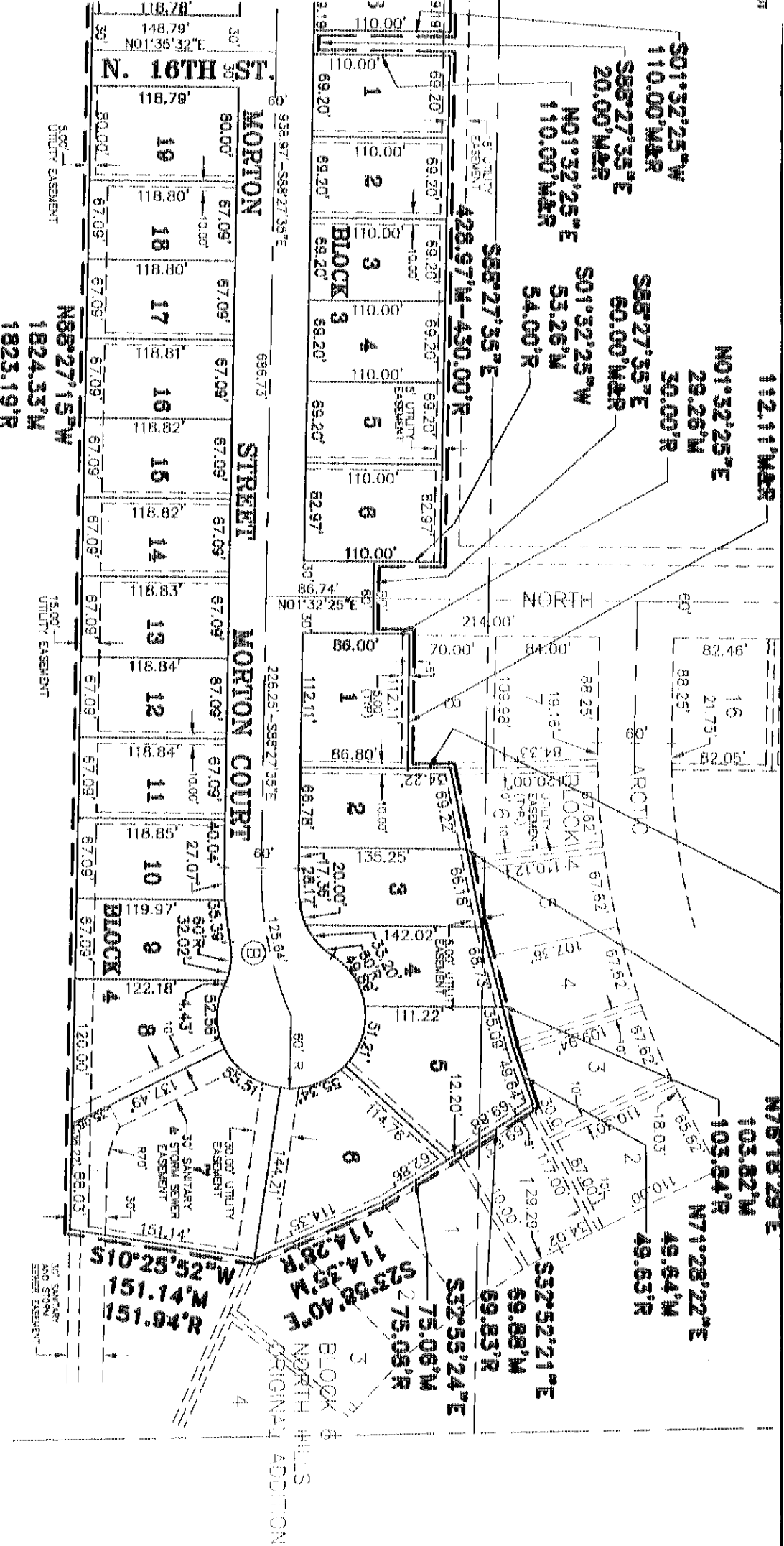
MORTON

STREET

MORTON COURT

NORTH HILLS
ORIGINAL ADDITION





20651-4

PROJECT: 20060570WIKELANDADON SHEET 4A.DWG 22201 35338

SHEET 4 OF 7

NORTH HILLS 2ND ADDITION FINAL PLAT

MATCH LINE SEE SHEET 2

NORTH 14TH STREET

NORTH

LOT 1
BLOCK 9

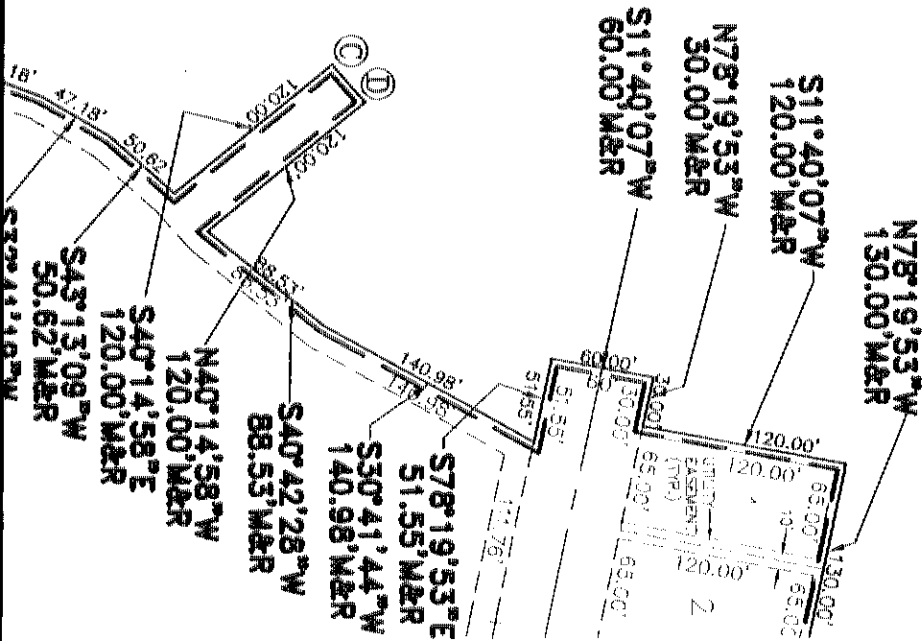
HILLS

N00°10'08"W 948.72' M&R

948.72'



SCALE: 1"=100'



ADDITION

OUTLOT "A"

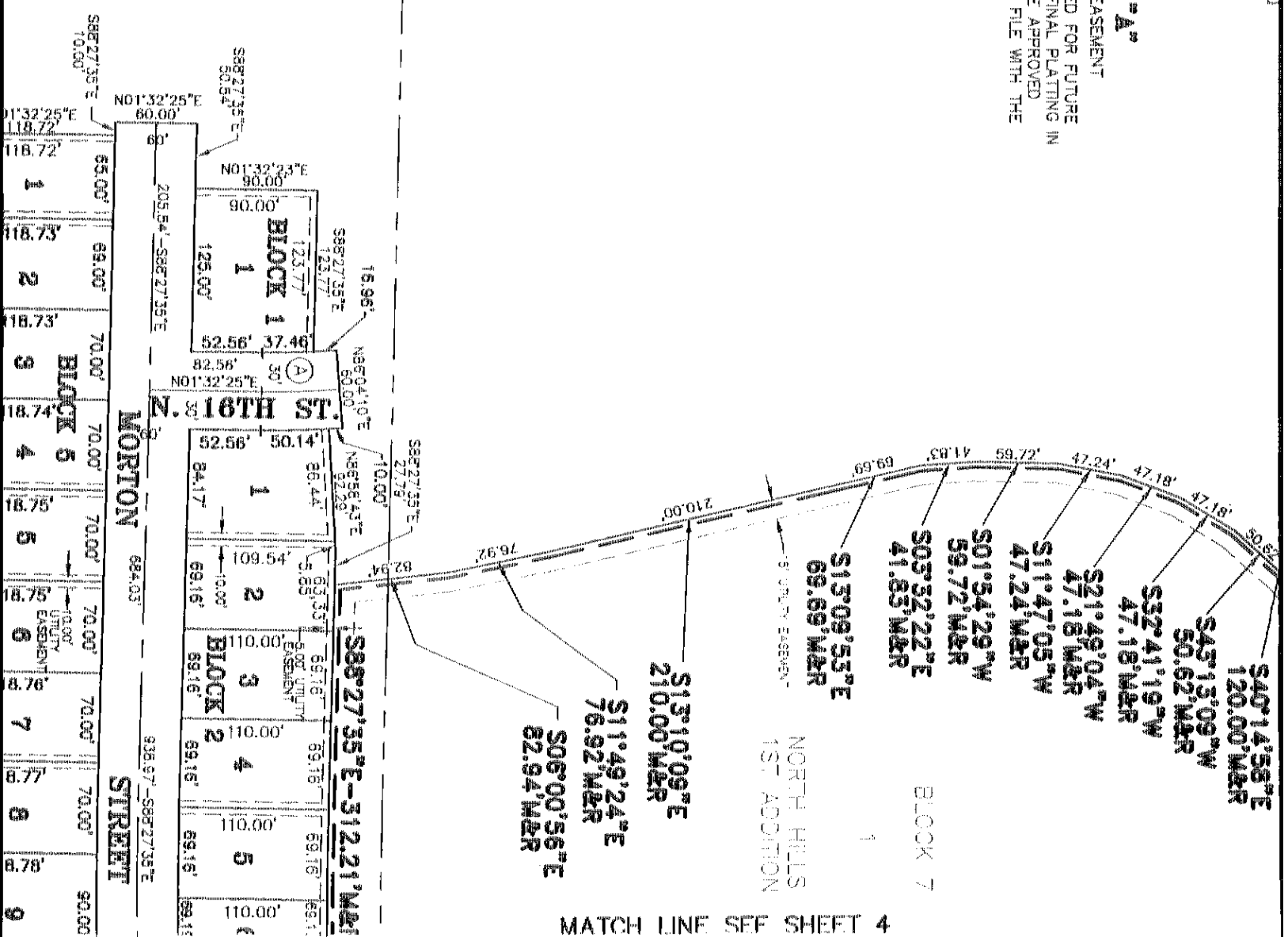
BLANKET UTILITY EASEMENT
THIS AREA IS RESERVED FOR FUTURE
DEVELOPMENT AFTER FINAL PLATING IN
ACCORDANCE WITH THE APPROVED
PRELIMINARY PLAT ON FILE WITH THE
CITY OF LINCOLN.

N00°00'28"E 383.24' M&R
383.24'

N00°08'46"W 395.65' M&R
395.65'

S89°57'14"E 383.00' M&R
383.00'

W1/4 CORNER
SEC. 1-10-157
30.02'



20651-5

1/4 CORNER
SEC. 1-10-87

N00°00'28"E 383.24' M&R

N00°08'46"W

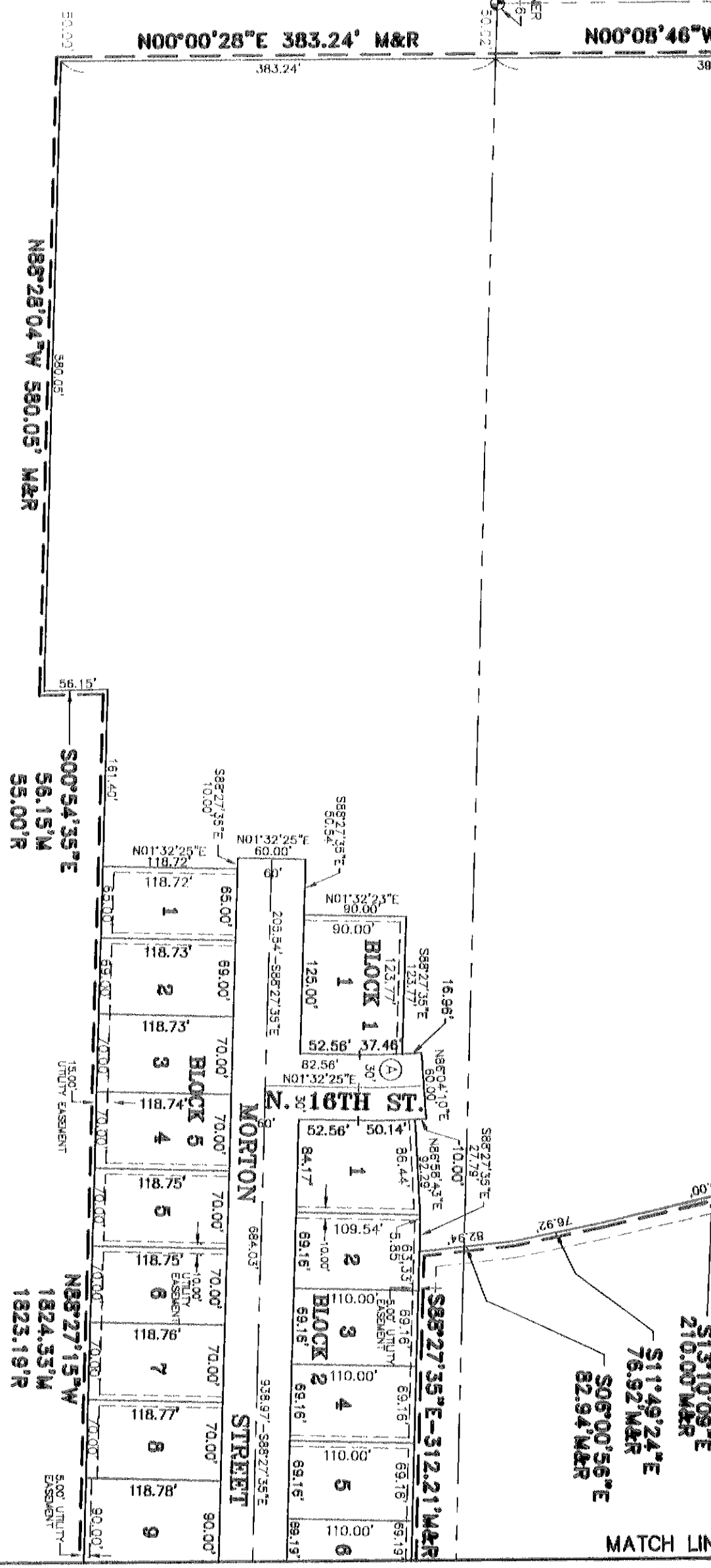
N88°28'04"W 580.05' M&R

S00°54'35"E
56.15'M
55.00'R

N88°27'15"W
1824.35'M
1823.19'R

PROJECTS\200057\N&E\JANUARY\19\DWG 22101 43552

SHEET 5 OF 7



S13°10'09"E
 210.00'M&R
 S11°49'24"E
 76.92'M&R
 S06°00'56"E
 82.94'M&R
 MATCH LINE

NORTH HILLS 2ND ADDITION FINAL PLAT

SURVEYORS CERTIFICATE

I HEREBY CERTIFY THAT I HAVE CAUSED TO BE SURVEYED THE SUBDIVISION TO BE KNOWN AS NORTH HILLS 2ND ADDITION. A SUBDIVISION COMPOSED OF OUTLOT "A", NORTH HILLS 1ST ADDITION ALL LOCATED IN SECTION 1, T10N, R6E OF THE 6TH, P.M., CITY OF LINCOLN, LANCASTER COUNTY, NEBRASKA, AND MORE PARTICULARLY DESCRIBED AS FOLLOWS:

COMMENCING FROM THE NORTHEAST CORNER OF SAID OUTLOT "A", SAID POINT BEING THE TRUE POINT OF BEGINNING; THENCE ON AN ASSUMED BEARING OF SOUTH 00 DEGREES 02 MINUTES 19 SECONDS EAST ALONG AN EASTERLY LINE OF SAID OUTLOT "A", A DISTANCE OF 1259.83 FEET TO A POINT OF DEFLECTION; THENCE SOUTH 05 DEGREES 18 MINUTES 18 SECONDS EAST ALONG AN EASTERLY LINE OF SAID OUTLOT "A", A DISTANCE OF 27.54 FEET TO A POINT OF DEFLECTION; THENCE SOUTH 16 DEGREES 06 MINUTES 06 SECONDS EAST ALONG AN EASTERLY LINE OF SAID OUTLOT "A", A DISTANCE OF 140.41 FEET TO A POINT OF DEFLECTION; THENCE SOUTH 02 DEGREES 43 MINUTES 21 SECONDS EAST ALONG AN EASTERLY LINE OF SAID OUTLOT "A", A DISTANCE OF 102.30 FEET TO A POINT OF DEFLECTION; THENCE SOUTH 00 DEGREES 42 MINUTES 01 SECONDS WEST ALONG AN EASTERLY LINE OF SAID OUTLOT "A", A DISTANCE OF 57.98 FEET TO A POINT OF DEFLECTION; THENCE SOUTH 01 DEGREES 32 MINUTES 25 SECONDS WEST ALONG AN EASTERLY LINE OF SAID OUTLOT "A", A DISTANCE OF 19.97 FEET TO A POINT OF DEFLECTION; THENCE NORTH 88 DEGREES 27 MINUTES 35 SECONDS WEST ALONG A SOUTHERLY LINE OF SAID OUTLOT "A", A DISTANCE OF 120.85 FEET TO A POINT OF DEFLECTION; THENCE NORTH 01 DEGREES 27 MINUTES 26 SECONDS EAST ALONG A WESTERLY LINE OF SAID OUTLOT "A", A DISTANCE OF 30.00 FEET TO A POINT OF DEFLECTION; THENCE NORTH 88 DEGREES 27 MINUTES 35 SECONDS WEST ALONG A SOUTHERLY LINE OF SAID OUTLOT "A", A DISTANCE OF 60.00 FEET TO A POINT OF DEFLECTION; THENCE SOUTH 01 DEGREES 32 MINUTES 25 SECONDS WEST ALONG AN EASTERLY LINE OF SAID OUTLOT "A", A DISTANCE OF 695.00 FEET TO A POINT OF DEFLECTION; THENCE SOUTH 01 DEGREES 32 MINUTES 25 SECONDS WEST ALONG AN EASTERLY LINE OF SAID OUTLOT "A", A DISTANCE OF 35.00 FEET TO A POINT OF DEFLECTION; THENCE NORTH 88 DEGREES 27 MINUTES 35 SECONDS WEST ALONG A SOUTHERLY LINE OF SAID OUTLOT "A", A DISTANCE OF 105.00 FEET TO A POINT OF DEFLECTION; THENCE NORTH 01 DEGREES 32 MINUTES 25 SECONDS EAST ALONG A WESTERLY LINE OF SAID OUTLOT "A", A DISTANCE OF 50.70 FEET TO A POINT OF DEFLECTION; THENCE NORTH 88 DEGREES 30 MINUTES 01 SECONDS WEST ALONG A SOUTHERLY LINE OF SAID OUTLOT "A", A DISTANCE OF 60.00 FEET TO A POINT OF DEFLECTION;

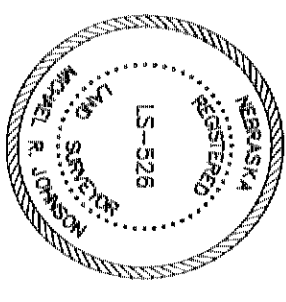
SAID OUTLOT "A", A DISTANCE OF 75.06 FEET TO A POINT OF DEFLECTION; THENCE SOUTH 23 DEGREES 58 MINUTES 40 SECONDS EAST ALONG AN EASTERLY LINE OF SAID OUTLOT "A", A DISTANCE OF 114.35 FEET TO A POINT OF DEFLECTION; THENCE SOUTH 10 DEGREES 25 MINUTES 52 SECONDS WEST ALONG AN EASTERLY LINE OF SAID OUTLOT "A", A DISTANCE OF 151.14 FEET TO A POINT OF DEFLECTION; THENCE NORTH 88 DEGREES 27 MINUTES 15 SECONDS WEST ALONG A SOUTHERLY LINE OF SAID OUTLOT "A", A DISTANCE OF 1824.33 FEET TO A POINT OF DEFLECTION; THENCE SOUTH 00 DEGREES 54 MINUTES 35 SECONDS EAST ALONG AN EASTERLY LINE OF SAID OUTLOT "A", A DISTANCE OF 56.15 FEET TO A POINT OF DEFLECTION; THENCE NORTH 88 DEGREES 28 MINUTES 04 SECONDS WEST ALONG A SOUTHERLY LINE OF SAID OUTLOT "A", A DISTANCE OF 580.05 FEET TO A POINT OF DEFLECTION; THENCE NORTH 00 DEGREES 00 MINUTES 28 SECONDS EAST ALONG AN EASTERLY LINE OF SAID OUTLOT "A", A DISTANCE OF 383.24 FEET TO A POINT OF DEFLECTION; THENCE NORTH 00 DEGREES 08 MINUTES 46 SECONDS WEST ALONG AN EASTERLY LINE OF SAID OUTLOT "A", A DISTANCE OF 395.65 FEET TO A POINT OF DEFLECTION; THENCE SOUTH 89 DEGREES 57 MINUTES 14 SECONDS EAST ALONG A WESTERLY LINE OF SAID OUTLOT "A", A DISTANCE OF 383.00 FEET TO A POINT OF DEFLECTION; THENCE NORTH 00 DEGREES 10 MINUTES 08 SECONDS WEST ALONG AN EASTERLY LINE OF SAID OUTLOT "A", A DISTANCE OF 948.72 FEET TO A POINT OF DEFLECTION; THENCE NORTH 87 DEGREES 48 MINUTES 35 SECONDS WEST ALONG AN EASTERLY LINE OF SAID OUTLOT "A", A DISTANCE OF 109.58 FEET TO A POINT OF DEFLECTION; THENCE NORTH 00 DEGREES 06 MINUTES 46 SECONDS WEST ALONG AN EASTERLY LINE OF SAID OUTLOT "A", A DISTANCE OF 182.00 FEET TO A POINT OF DEFLECTION; THENCE NORTH 09 DEGREES 44 MINUTES 54 SECONDS EAST ALONG A SOUTHERLY LINE OF SAID OUTLOT "A", A DISTANCE OF 272.53 FEET TO A POINT OF DEFLECTION; THENCE NORTH 87 DEGREES 48 MINUTES 35 SECONDS WEST ALONG AN EASTERLY LINE OF SAID OUTLOT "A", A DISTANCE OF 407.03 FEET TO A POINT OF DEFLECTION; THENCE NORTH 09 DEGREES 44 MINUTES 54 SECONDS EAST ALONG A WESTERLY LINE OF SAID OUTLOT "A", A DISTANCE OF 407.03 FEET TO A POINT OF DEFLECTION; THENCE NORTH 53 DEGREES 25 MINUTES 21 SECONDS EAST ALONG A NORTHWESTERLY LINE OF SAID OUTLOT "A", A DISTANCE OF 979.30 FEET TO A POINT OF DEFLECTION; THENCE SOUTH 89 DEGREES 48 MINUTES 58 SECONDS EAST ALONG THE NORTHERLY LINE OF SAID OUTLOT "A", A DISTANCE OF 1723.22 FEET TO THE TRUE POINT OF BEGINNING; AND CONTAINING 118.94 ACRES, OR 5,180,906.93 SQUARE FEET MORE OR LESS.

PERMANENT MONUMENTS HAVE BEEN FOUND OR SET AT ALL BOUNDARY CORNERS, STREET INTERSECTIONS, BLOCK CORNERS, POINTS OF TANGENCY AND CURVATURE AS SHOWN ON THE PLAT IN ACCORDANCE WITH TITLE 26 OF THE LINCOLN MUNICIPAL CODE. TEMPORARY MARKERS HAVE BEEN PLACED AT ALL LOT CORNERS AND THE OWNER WILL FURNISH TO THE CITY OF LINCOLN A STAKING BOND TO INSURE THE PLACING OF PERMANENT MONUMENTS AT ALL SUCH LOT CORNERS PRIOR TO THE CONSTRUCTION ON OR CONTINGENCE OF ANY LOT SHOWN

LINE OF SAID OUTLOT "A", A DISTANCE OF 105.00 FEET TO A POINT OF DEFLECTION; THENCE NORTH 01 DEGREES 32 MINUTES 25 SECONDS EAST ALONG A WESTERLY LINE OF SAID OUTLOT "A", A DISTANCE OF 50.70 FEET TO A POINT OF DEFLECTION; THENCE NORTH 88 DEGREES 30 MINUTES 01 SECONDS WEST ALONG A SOUTHERLY LINE OF SAID OUTLOT "A", A DISTANCE OF 60.00 FEET TO A POINT OF DEFLECTION; THENCE SOUTH 01 DEGREES 32 MINUTES 25 SECONDS WEST ALONG A WESTERLY LINE OF SAID OUTLOT "A", A DISTANCE OF 10.00 FEET TO A POINT OF DEFLECTION; THENCE NORTH 88 DEGREES 30 MINUTES 01 SECONDS WEST ALONG A SOUTHERLY LINE OF SAID OUTLOT "A", A DISTANCE OF 79.00 FEET TO A POINT OF DEFLECTION; THENCE NORTH 81 DEGREES 58 MINUTES 50 SECONDS WEST ALONG A SOUTHERLY LINE OF SAID OUTLOT "A", A DISTANCE OF 59.38 FEET TO A POINT OF DEFLECTION; THENCE NORTH 79 DEGREES 27 MINUTES 35 SECONDS WEST ALONG A SOUTHERLY LINE OF SAID OUTLOT "A", A DISTANCE OF 99.59 FEET TO A POINT OF DEFLECTION; THENCE NORTH 78 DEGREES 19 MINUTES 53 SECONDS WEST ALONG A SOUTHERLY LINE OF SAID OUTLOT "A", A DISTANCE OF 130.00 FEET TO A POINT OF DEFLECTION; THENCE SOUTH 11 DEGREES 40 MINUTES 07 SECONDS WEST ALONG AN EASTERLY LINE OF SAID OUTLOT "A", A DISTANCE OF 120.00 FEET TO A POINT OF DEFLECTION; THENCE NORTH 78 DEGREES 19 MINUTES 53 SECONDS WEST ALONG A SOUTHERLY LINE OF SAID OUTLOT "A", A DISTANCE OF 30.00 FEET TO A POINT OF DEFLECTION; THENCE SOUTH 11 DEGREES 40 MINUTES 07 SECONDS WEST ALONG AN EASTERLY LINE OF SAID OUTLOT "A", A DISTANCE OF 60.00 FEET TO A POINT OF DEFLECTION; THENCE SOUTH 78 DEGREES 19 MINUTES 53 SECONDS EAST ALONG A NORTHEASTERLY LINE OF SAID OUTLOT "A", A DISTANCE OF 51.55 FEET TO A POINT OF DEFLECTION; THENCE SOUTH 30 DEGREES 41 MINUTES 44 SECONDS WEST ALONG A SOUTHEASTERLY LINE OF SAID OUTLOT "A", A DISTANCE OF 140.98 FEET TO A POINT OF DEFLECTION; THENCE SOUTH 40 DEGREES 42 MINUTES 28 SECONDS WEST ALONG A SOUTHEASTERLY LINE OF SAID OUTLOT "A", A DISTANCE OF 88.53 FEET TO A POINT OF DEFLECTION; THENCE NORTH 40 DEGREES 14 MINUTES 58 SECONDS WEST ALONG A SOUTHWESTERLY LINE OF SAID OUTLOT "A", A DISTANCE OF 120.00 FEET TO A POINT OF DEFLECTION; THENCE ALONG A CURVE IN A CLOCKWISE DIRECTION, HAVING A RADIUS OF 280.00 FEET, ARC LENGTH OF 17.25 FEET, DELTA ANGLE OF 03 DEGREES 31 MINUTES 47 SECONDS, A CHORD BEARING OF SOUTH 49 DEGREES 57 MINUTES 39 SECONDS WEST, AND A CHORD LENGTH OF 17.25 FEET TO A POINT OF REVERSE CURVATURE; THENCE ALONG A CURVE IN A COUNTER CLOCKWISE DIRECTION, HAVING A RADIUS OF 370.00 FEET, ARC LENGTH OF 12.76 FEET, DELTA ANGLE OF 01 DEGREES 58 MINUTES 31 SECONDS, A CHORD BEARING OF SOUTH 50 DEGREES 44 MINUTES 18 SECONDS WEST, AND A CHORD LENGTH OF 12.75 FEET TO A POINT OF DEFLECTION; THENCE SOUTH 40 DEGREES 58 SECONDS EAST ALONG A NORTHEASTERLY LINE OF SAID OUTLOT "A", A DISTANCE OF 120.00 FEET TO A POINT OF DEFLECTION; THENCE SOUTH 43 DEGREES 13 MINUTES 09 SECONDS WEST ALONG AN EASTERLY LINE OF SAID OUTLOT "A", A DISTANCE OF 50.82 FEET TO A POINT OF DEFLECTION; THENCE SOUTH 32 DEGREES 41 MINUTES 19 SECONDS WEST ALONG AN EASTERLY LINE OF SAID OUTLOT "A", A DISTANCE OF 47.18 FEET TO A POINT OF DEFLECTION; THENCE SOUTH 21 DEGREES 49 MINUTES 04 SECONDS WEST ALONG AN EASTERLY LINE OF SAID OUTLOT "A", A DISTANCE OF 47.18 FEET TO A POINT OF DEFLECTION; THENCE SOUTH 11 DEGREES 47 MINUTES 05 SECONDS WEST ALONG AN EASTERLY LINE OF SAID OUTLOT "A", A DISTANCE OF 47.24 FEET TO A POINT OF DEFLECTION; THENCE SOUTH 01 DEGREES 54 MINUTES 29 SECONDS WEST ALONG AN EASTERLY LINE OF SAID OUTLOT "A", A DISTANCE OF 59.72 FEET TO A POINT OF DEFLECTION; THENCE SOUTH 03 DEGREES 32 MINUTES 22 SECONDS EAST ALONG AN EASTERLY LINE OF SAID OUTLOT "A", A DISTANCE OF 41.83 FEET TO A POINT OF DEFLECTION; THENCE SOUTH 13 DEGREES 09 MINUTES 53 SECONDS EAST ALONG AN EASTERLY LINE OF SAID OUTLOT "A", A DISTANCE OF 69.69 FEET TO A POINT OF DEFLECTION; THENCE SOUTH 13 DEGREES 10 MINUTES 09 SECONDS EAST ALONG AN EASTERLY LINE OF SAID OUTLOT "A", A DISTANCE OF 210.00 FEET TO A POINT OF DEFLECTION; THENCE SOUTH 11 DEGREES 49 MINUTES 24 SECONDS EAST ALONG AN EASTERLY LINE OF SAID OUTLOT "A", A DISTANCE OF 76.92 FEET TO A POINT OF DEFLECTION; THENCE SOUTH 08 DEGREES 00 MINUTES 58 SECONDS EAST ALONG AN EASTERLY LINE OF SAID OUTLOT "A", A DISTANCE OF 82.94 FEET TO A POINT OF DEFLECTION; THENCE SOUTH 88 DEGREES 27 MINUTES 35 SECONDS EAST ALONG A NORTHERLY LINE OF SAID OUTLOT "A", A DISTANCE OF 312.21 FEET TO A POINT OF DEFLECTION; THENCE SOUTH 01 DEGREES 32 MINUTES 25 SECONDS WEST ALONG AN EASTERLY LINE OF SAID OUTLOT "A", A DISTANCE OF 110.00 FEET TO A POINT OF DEFLECTION; THENCE SOUTH 88 DEGREES 27 MINUTES 35 SECONDS EAST ALONG A NORTHERLY LINE OF SAID OUTLOT "A", A DISTANCE OF 20.00 FEET TO A POINT OF DEFLECTION; THENCE NORTH 01 DEGREES 32 MINUTES 25 SECONDS EAST ALONG A WESTERLY LINE OF SAID OUTLOT "A", A DISTANCE OF 110.00 FEET TO A POINT OF DEFLECTION; THENCE SOUTH 88 DEGREES

PERMANENT MONUMENTS HAVE BEEN FOUND OR SET AT ALL BOUNDARY CORNERS, STREET INTERSECTIONS, BLOCK CORNERS, POINTS OF TANGENCY AND CURVATURE AS SHOWN ON THE PLAN IN ACCORDANCE WITH TITLE 26 OF THE LINCOLN MUNICIPAL CODE. TEMPORARY MARKERS HAVE BEEN PLACED AT ALL LOT CORNERS AND THE OWNER WILL FURNISH TO THE CITY OF LINCOLN A STAKING BOND TO INSURE THE PLACING OF PERMANENT MONUMENTS AT ALL SUCH LOT CORNERS PRIOR TO THE CONSTRUCTION OR CONVEYANCE OF ANY LOT SHOWN ON THIS FINAL PLAT. ALL DIMENSIONS ARE CHORD MEASUREMENTS UNLESS OTHERWISE SHOWN, AND ARE IN FEET AND DECIMALS OF A FOOT.

February 21st 2008
 DATE
 MICHAEL R. JOHNSON
 OLSSON ASSOCIATES
 1111 LINCOLN MALL
 LINCOLN, NE 68508
 L.S. NUMBER 526



PLANNING COMMISSION APPROVAL

THE LINCOLN-LANCASTER COUNTY PLANNING COMMISSION HAS APPROVED THIS FINAL PLAT AND ACCEPTED THE OFFER OF DEDICATION ON THIS 21st DAY OF **March** BY RESOLUTION NO. **PC-0064**

ATTEST:
 CHAIR
[Signature]

CLOCKWISE DIRECTION, HAVING A RADIUS OF 281.00 FEET, ARC LENGTH OF 17.25 FEET, DELTA ANGLE OF 03 DEGREES 31 MINUTES 47 SECONDS, A CHORD BEARING OF SOUTH 49 DEGREES 57 MINUTES 39 SECONDS WEST, AND A CHORD LENGTH OF 17.25 FEET TO A POINT OF REVERSE CURVATURE; THENCE ALONG A CURVE IN A COUNTER CLOCKWISE DIRECTION, HAVING A RADIUS OF 370.00 FEET, ARC LENGTH OF 12.76 FEET, DELTA ANGLE OF 01 DEGREES 58 MINUTES 31 SECONDS, A CHORD BEARING OF SOUTH 50 DEGREES 44 MINUTES 18 SECONDS WEST, AND A CHORD LENGTH OF 12.75 FEET TO A POINT, THENCE SOUTH 40 DEGREES 14 MINUTES 58 SECONDS EAST ALONG A NORTHEASTERLY LINE OF SAID OUTLOT "A", A DISTANCE OF 120.00 FEET TO A POINT OF DEFLECTION; THENCE SOUTH 43 DEGREES 13 MINUTES 09 SECONDS WEST ALONG AN EASTERLY LINE OF SAID OUTLOT "A", A DISTANCE OF 50.62 FEET TO A POINT OF DEFLECTION; THENCE SOUTH 32 DEGREES 41 MINUTES 19 SECONDS WEST ALONG AN EASTERLY LINE OF SAID OUTLOT "A", A DISTANCE OF 47.18 FEET TO A POINT OF DEFLECTION; THENCE SOUTH 21 DEGREES 49 MINUTES 04 SECONDS WEST ALONG AN EASTERLY LINE OF SAID OUTLOT "A", A DISTANCE OF 47.18 FEET TO A POINT OF DEFLECTION; THENCE SOUTH 11 DEGREES 47 MINUTES 05 SECONDS WEST ALONG AN EASTERLY LINE OF SAID OUTLOT "A", A DISTANCE OF 47.24 FEET TO A POINT OF DEFLECTION; THENCE SOUTH 01 DEGREES 54 MINUTES 29 SECONDS WEST ALONG AN EASTERLY LINE OF SAID OUTLOT "A", A DISTANCE OF 59.72 FEET TO A POINT OF DEFLECTION; THENCE SOUTH 03 DEGREES 32 MINUTES 22 SECONDS EAST ALONG AN EASTERLY LINE OF SAID OUTLOT "A", A DISTANCE OF 41.83 FEET TO A POINT OF DEFLECTION; THENCE SOUTH 13 DEGREES 09 MINUTES 53 SECONDS EAST ALONG AN EASTERLY LINE OF SAID OUTLOT "A", A DISTANCE OF 69.69 FEET TO A POINT OF DEFLECTION; THENCE SOUTH 13 DEGREES 10 MINUTES 09 SECONDS EAST ALONG AN EASTERLY LINE OF SAID OUTLOT "A", A DISTANCE OF 210.00 FEET TO A POINT OF DEFLECTION; THENCE SOUTH 11 DEGREES 49 MINUTES 24 SECONDS EAST ALONG AN EASTERLY LINE OF SAID OUTLOT "A", A DISTANCE OF 76.92 FEET TO A POINT OF DEFLECTION; THENCE SOUTH 06 DEGREES 00 MINUTES 56 SECONDS EAST ALONG AN EASTERLY LINE OF SAID OUTLOT "A", A DISTANCE OF 82.94 FEET TO A POINT OF DEFLECTION; THENCE SOUTH 88 DEGREES 27 MINUTES 35 SECONDS EAST ALONG A NORTHERLY LINE OF SAID OUTLOT "A", A DISTANCE OF 312.21 FEET TO A POINT OF DEFLECTION; THENCE SOUTH 01 DEGREES 32 MINUTES 25 SECONDS WEST ALONG AN EASTERLY LINE OF SAID OUTLOT "A", A DISTANCE OF 110.00 FEET TO A POINT OF DEFLECTION; THENCE SOUTH 88 DEGREES 27 MINUTES 35 SECONDS EAST ALONG A NORTHERLY LINE OF SAID OUTLOT "A", A DISTANCE OF 20.00 FEET TO A POINT OF DEFLECTION; THENCE NORTH 01 DEGREES 32 MINUTES 25 SECONDS EAST ALONG A WESTERLY LINE OF SAID OUTLOT "A", A DISTANCE OF 110.00 FEET TO A POINT OF DEFLECTION; THENCE SOUTH 88 DEGREES 27 MINUTES 35 SECONDS WEST ALONG AN EASTERLY LINE OF SAID OUTLOT "A", A DISTANCE OF 53.26 FEET TO A POINT OF DEFLECTION; THENCE SOUTH 88 DEGREES 27 MINUTES 35 SECONDS EAST ALONG A NORTHERLY LINE OF SAID OUTLOT "A", A DISTANCE OF 60.00 FEET TO A POINT OF DEFLECTION; THENCE NORTH 01 DEGREES 32 MINUTES 25 SECONDS EAST ALONG A WESTERLY LINE OF SAID OUTLOT "A", A DISTANCE OF 29.26 FEET TO A POINT OF DEFLECTION; THENCE SOUTH 88 DEGREES 51 MINUTES 58 SECONDS EAST ALONG A NORTHERLY LINE OF SAID OUTLOT "A", A DISTANCE OF 112.11 FEET TO A POINT OF DEFLECTION; THENCE NORTH 00 DEGREES 05 MINUTES 20 SECONDS WEST ALONG AN WESTERLY LINE OF SAID OUTLOT "A", A DISTANCE OF 34.22 FEET TO A POINT OF DEFLECTION; THENCE NORTH 79 DEGREES 39 MINUTES 59 SECONDS EAST ALONG A NORTHERLY LINE OF SAID OUTLOT "A", A DISTANCE OF 135.40 FEET TO A POINT OF DEFLECTION; THENCE NORTH 76 DEGREES 18 MINUTES 29 SECONDS EAST ALONG A NORTHERLY LINE OF SAID OUTLOT "A", A DISTANCE OF 103.82 FEET TO A POINT OF DEFLECTION; THENCE NORTH 71 DEGREES 28 MINUTES 22 SECONDS EAST ALONG A NORTHERLY LINE OF SAID OUTLOT "A", A DISTANCE OF 49.84 FEET TO A POINT OF DEFLECTION; THENCE SOUTH 32 DEGREES 52 MINUTES 21 SECONDS EAST ALONG A EASTERLY LINE OF SAID OUTLOT "A", A DISTANCE OF 69.88 FEET TO A POINT OF DEFLECTION; THENCE SOUTH 32 DEGREES 56 MINUTES 24 SECONDS EAST ALONG A EASTERLY LINE OF

PLANNING COMMISSION APPROVAL

THE LINCOLN-LANCASTER COUNTY PLANNING COMMISSION HAS APPROVED THIS FINAL PLAT AND ACCEPTED THE OFFER OF DEDICATION ON THIS 21 DAY OF March BY RESOLUTION NO. PC-0064

ATTEST:
CHAIR 

NORTH HILLS 2ND ADDITION

FINAL PLAT DEDICATION

THE FOREGOING PLAT, IS KNOWN AS NORTH HILLS 2ND ADDITION, A SUBDIVISION COMPOSED OF OUTLOT "A" NORTH HILLS 1ST ADDITION, LOCATED IN SECTION 1 TION, R6E, OF THE 6TH PM, CITY OF LINCOLN, LANCASTER COUNTY, NEBRASKA, AND IS MORE PARTICULARLY DESCRIBED IN THE SURVEYOR'S CERTIFICATE. THIS DEDICATION IS MADE WITH THE FREE CONSENT AND IN ACCORDANCE WITH THE DESIRES OF THE UNDERSIGNED, SOLE OWNER(S), AND THE EASEMENTS SHOWN THEREON ARE HEREBY GRANTED IN PERPETUITY TO THE CITY OF LINCOLN, NEBRASKA, A MUNICIPAL CORPORATION, ALTEL, TIME WARNER ENTERTAINMENT - ADVANCE/NEWHOUSE, PEOPLES NATURAL GAS, THEIR SUCCESSORS AND ASSIGNS, TO ALLOW ENTRY FOR THE PURPOSE OF CONSTRUCTION, RECONSTRUCTION, REPLACEMENT, REPAIR, OPERATION AND MAINTENANCE OF WIRES, CABLES, CONDUITS, FIXTURES, POLES, TOWERS, PIPES, AND EQUIPMENT FOR THE DISTRIBUTION OF ELECTRICITY AND GAS; TELEPHONE AND CABLE TELEVISION; WASTEWATER COLLECTORS; STORM DRAINS; WATER MAINS AND ALL APPURTENANCES THERETO, OVER, UPON, OR UNDER THE EASEMENTS AS SHOWN ON THE FOREGOING PLAT.

THE CONSTRUCTION OR LOCATION OF ANY BUILDING OR STRUCTURE, EXCLUDING FENCES, OVER, UPON, OR UNDER ANY EASEMENT SHOWN THEREON SHALL BE PROHIBITED.

THE CONSTRUCTION OR LOCATION OF ANY FENCE OR OTHER IMPROVEMENT WHICH OBSTRUCTS DRAINAGE SHALL BE PROHIBITED OVER, UPON, OR UNDER ANY STORM DRAIN EASEMENT OR DRAINAGE EASEMENT SHOWN THEREON.

THE CITY OF LINCOLN, ITS SUCCESSORS OR ASSIGNS ARE HEREBY HELD HARMLESS FOR THE COST OF REPLACEMENT OR DAMAGE TO ANY IMPROVEMENT OR VEGETATION OVER, UPON, OR UNDER ANY EASEMENT SHOWN THEREON.

THE STREETS SHOWN ARE HEREBY DEDICATED TO THE PUBLIC. THE ACCESS EASEMENTS AND THE PEDESTRIAN WAY EASEMENTS SHOWN THEREON SHALL BE USED FOR PUBLIC ACCESS AND THE PUBLIC IS HEREBY GRANTED THE RIGHT OF SUCH USE.

THE RIGHT OF DIRECT VEHICULAR ACCESS TO NORTH 14TH STREET FROM OUTLOT "A" IS HEREBY RELINQUISHED.

WITNESS MY HAND THIS 19th DAY OF December, 2009.

ACKNOWLEDGEMENT OF NOTARY

STATE OF NEBRASKA
COUNTY OF LANCASTER

THE FOREGOING INSTRUMENT WAS ACKNOWLEDGED BEFORE ME THIS 19th DAY OF December, 2009, BY GERALD L. SCHLEICH, PRESIDENT OF SOUTHWEST INC., A NEBRASKA CORPORATION, AS GENERAL PARTNER OF NORTH HILLS LIMITED PARTNERSHIP, A NEBRASKA LIMITED PARTNERSHIP, ON BEHALF OF THE LIMITED PARTNERSHIP.

Gerald L. Schleich
NOTARY PUBLIC



ACKNOWLEDGEMENT OF NOTARY

STATE OF NEBRASKA
COUNTY OF LANCASTER

THE FOREGOING INSTRUMENT WAS ACKNOWLEDGED BEFORE ME THIS 19th DAY OF December, 2009, BY THOMAS E. WHITE, PRESIDENT OF DEVELOPMENT FOR RIDGE DEVELOPMENT COMPANY, A NEBRASKA CORPORATION, AS GENERAL PARTNER OF NORTH HILLS LIMITED PARTNERSHIP, A NEBRASKA LIMITED PARTNERSHIP, ON BEHALF OF THE LIMITED PARTNERSHIP.

Thomas E. White
NOTARY PUBLIC



ACKNOWLEDGEMENT OF NOTARY

STATE OF NEBRASKA
COUNTY OF LANCASTER

THE FOREGOING INSTRUMENT WAS ACKNOWLEDGED BEFORE ME THIS 19th DAY OF December, 2009, BY JOHN C. BRAGER, PRESIDENT OF CONSTRUCTION FOR RIDGE DEVELOPMENT COMPANY, A NEBRASKA CORPORATION, AS GENERAL PARTNER OF NORTH HILLS LIMITED PARTNERSHIP, A NEBRASKA LIMITED PARTNERSHIP, ON BEHALF OF THE LIMITED PARTNERSHIP.

THE FOREGOING INSTRUMENT WAS ACKNOWLEDGED BEFORE ME THIS 14th DAY OF October, 2008, BY JOHN C. BRAGER, PRESIDENT OF CONSTRUCTION FOR RIDGE DEVELOPMENT COMPANY, A NEBRASKA CORPORATION, AS GENERAL PARTNER OF NORTH HILLS LIMITED PARTNERSHIP, A NEBRASKA LIMITED PARTNERSHIP, ON BEHALF OF THE LIMITED PARTNERSHIP.

Arthur J. Fisher
NOTARY PUBLIC



LIEN HOLDER CONSENT AND SUBORDINATION

THE UNDERSIGNED, HOLDER OF THAT CERTAIN LIEN AGAINST THE REAL PROPERTY DESCRIBED IN THE PLAT KNOWN AS NORTH HILLS 2ND ADDITION (HEREINAFTER "PLAT"), SAID LIEN BEING RECORDED IN THE OFFICE OF THE REGISTER OF DEEDS OF LANCASTER COUNTY, NEBRASKA, AS INSTRUMENT NO. 97-54306, 98-7637, 00-19736, 00-34941 (HEREINAFTER "LIEN"), DOES HEREBY CONSENT TO THE DEDICATION OF AND SUBORDINATE THE LIEN TO ANY UTILITY (SEWER, WATER, ELECTRIC, CABLE TV, TELEPHONE, NATURAL GAS) EASEMENTS, OR STREETS, OR ROADS, PEDESTRIAN WAY EASEMENTS, AND ACCESS EASEMENTS AND RELINQUISHMENTS OF ACCESS, DEDICATED TO THE PUBLIC, ALL AS SHOWN ON THE PLAT, BUT NOT OTHERWISE. THE UNDERSIGNED CONFIRMS THAT IT IS THE HOLDER OF THE LIEN AND HAS NOT ASSIGNED THE LIEN TO ANY OTHER PERSON.

NORTH HILLS LIMITED PARTNERSHIP,
A NEBRASKA LIMITED PARTNERSHIP

BY: John C. Brager
NEBRASKA CORPORATION, GENERAL PARTNER

THOMAS E. WHITE
PRESIDENT OF DEVELOPMENT

BY: John C. Brager
JOHN C. BRAGER
PRESIDENT OF CONSTRUCTION

BY: Gerald L. Schleich
SOUTHVIEW INC., A NEBRASKA CORPORATION, GENERAL PARTNER
GERALD L. SCHLEICH, PRESIDENT

BY: James C. Lamphere
JAMES C. LAMPHERE
TRUSTEE

BY: Ella Lois Pegram
ELLA LOIS PEGRAM (A.K.A. ELLA L. PEGRAM)
TRUSTEE BY ASSIGNMENT

NEBRASKA TITLE COMPANY
BENEFICIARY
BY: James C. Lamphere
TITLE: Trustee

PINNACLE BANK
TRUSTEE AND BENEFICIARY
BY: Ella Lois Pegram
TITLE: Loan Officer

ACKNOWLEDGMENT OF NOTARY

STATE OF NEBRASKA
COUNTY OF LANCASTER

THE FOREGOING INSTRUMENT WAS ACKNOWLEDGED BEFORE ME THIS 9 DAY OF November, 2008, BY JAMES C. LAMPHERE, TRUSTEE.

Genevieve J. Quattori
NOTARY PUBLIC



ACKNOWLEDGMENT OF NOTARY

STATE OF NEBRASKA
COUNTY OF LANCASTER

THE FOREGOING INSTRUMENT WAS ACKNOWLEDGED BEFORE ME THIS 17th DAY OF October, 2008, BY ELLA LOIS PEGRAM (A.K.A. ELLA L. PEGRAM), TRUSTEE BY ASSIGNMENT.

A. J. G. Smith



NEBRASKA TITLE COMPANY
BENEFICIARY
BY: [Signature]
TITLE: President

PINNACLE BANK
TRUSTEE AND BENEFICIARY
BY: [Signature]
TITLE: Loan Officer

ACKNOWLEDGMENT OF NOTARY

STATE OF NEBRASKA
COUNTY OF LANCASTER

THE FOREGOING INSTRUMENT WAS ACKNOWLEDGED BEFORE ME THIS 9 DAY OF November, 2008, BY JAMES C. LAMPHIER, TRUSTEE.

[Signature]
NOTARY PUBLIC



ACKNOWLEDGMENT OF NOTARY

STATE OF NEBRASKA
COUNTY OF LANCASTER

THE FOREGOING INSTRUMENT WAS ACKNOWLEDGED BEFORE ME THIS 12th DAY OF October, 2008, BY ELLA LOIS PEGRAM (A.K.A. ELLA L. PEGRAM), TRUSTEE BY ASSIGNMENT.

[Signature]
NOTARY PUBLIC



ACKNOWLEDGMENT OF NOTARY

STATE OF NEBRASKA
COUNTY OF LANCASTER

THE FOREGOING INSTRUMENT WAS ACKNOWLEDGED BEFORE ME THIS 16th DAY OF November, 2008, BY NAME James C. Lamphier & Ella L. Pegram, TITLE Trustee, NEBRASKA TITLE COMPANY, BENEFICIARY, ON BEHALF OF SAID COMPANY.

[Signature]
NOTARY PUBLIC



ACKNOWLEDGMENT OF NOTARY
STATE OF NEBRASKA
COUNTY OF LANCASTER

THE FOREGOING INSTRUMENT WAS ACKNOWLEDGED BEFORE ME THIS 16th DAY OF Nov, 2008, BY NAME James C. Lamphier & Ella L. Pegram, TITLE Trustee, PINNACLE BANK, TRUSTEE AND BENEFICIARY, ON BEHALF OF SAID BANK.

[Signature]
NOTARY PUBLIC

