

2003-36278

hgm ASSOCIATES INC. ENGINEERING ARCHITECTURE SURVEYING

DATE: APRIL 03

APPROVED: [Signature]

BY: [Signature]

FOR: [Signature]

PROJECT: MILLARD PARK SOUTH 2

CLIENT: N.P. DODGE

SHEET: FINAL PLAT

REGISTERED PROFESSIONAL SURVEYOR

STATE OF NEBRASKA

NO. 1574

EXPIRES 12/31/04

REGISTERED PROFESSIONAL ENGINEER

STATE OF NEBRASKA

NO. 1574

EXPIRES 12/31/04

# MILLARD PARK SOUTH 2

Lots 330 through 346, inclusive, being a platting of part of the Southwest Quarter of Section 15, Township 14 North, Range 11 East of the 6th P.M., Sorpy County, Nebraska

**LAND SURVEYOR'S CERTIFICATE**

I HEREBY CERTIFY THAT I have made a boundary survey of the subdivision herein and that permanent monuments have been placed at the corners of the lots and sections and that a bond has been procured with Sorpy County, Nebraska, in order to ensure that permanent monuments are maintained in accordance with the provisions of the Nebraska Statutes. The plat of the subdivision herein is a true and correct copy of the original as recorded in the public records of Sorpy County, Nebraska, and is a true and correct copy of the original as recorded in the public records of Sorpy County, Nebraska. The plat of the subdivision herein is a true and correct copy of the original as recorded in the public records of Sorpy County, Nebraska, and is a true and correct copy of the original as recorded in the public records of Sorpy County, Nebraska. The plat of the subdivision herein is a true and correct copy of the original as recorded in the public records of Sorpy County, Nebraska, and is a true and correct copy of the original as recorded in the public records of Sorpy County, Nebraska.

**ACKNOWLEDGMENT OF INTERESTS**

STATE OF NEBRASKA }  
County of Douglas }  
I, the undersigned, Clerk of the County of Douglas, Nebraska, do hereby certify that the foregoing plat of the subdivision herein was duly filed for record in the public records of Sorpy County, Nebraska, and that the same is a true and correct copy of the original as recorded in the public records of Sorpy County, Nebraska, and is a true and correct copy of the original as recorded in the public records of Sorpy County, Nebraska.

**ACKNOWLEDGMENT OF INTERESTS**

STATE OF NEBRASKA }  
County of Douglas }  
I, the undersigned, Clerk of the County of Douglas, Nebraska, do hereby certify that the foregoing plat of the subdivision herein was duly filed for record in the public records of Sorpy County, Nebraska, and that the same is a true and correct copy of the original as recorded in the public records of Sorpy County, Nebraska, and is a true and correct copy of the original as recorded in the public records of Sorpy County, Nebraska.

**ACKNOWLEDGMENT OF INTERESTS**

STATE OF NEBRASKA }  
County of Douglas }  
I, the undersigned, Clerk of the County of Douglas, Nebraska, do hereby certify that the foregoing plat of the subdivision herein was duly filed for record in the public records of Sorpy County, Nebraska, and that the same is a true and correct copy of the original as recorded in the public records of Sorpy County, Nebraska, and is a true and correct copy of the original as recorded in the public records of Sorpy County, Nebraska.

CURVE	BEARING	ARC LENGTH	CHORD LENGTH	DATA ANGLE
C1	74.86°	17.78'	17.74'	13.25 9"
C2	75.00°	17.87'	17.83'	13.39 15"

**NOTES**

- ALL DISTANCES ARE SHOWN IN DECIMAL FEET.
- ALL DISTANCES SHOWN ALONG CURVES ARE ARC DISTANCES.
- ALL ANGLES ARE 90° UNLESS OTHERWISE NOTED.

**COUNTY SURVEYOR'S CERTIFICATE**

This plat of MILLARD PARK SOUTH 2 was reviewed by the Sorpy County Surveyor's Office this 16th day of April, 2003.

**COUNTY ENGINEER'S CERTIFICATE**

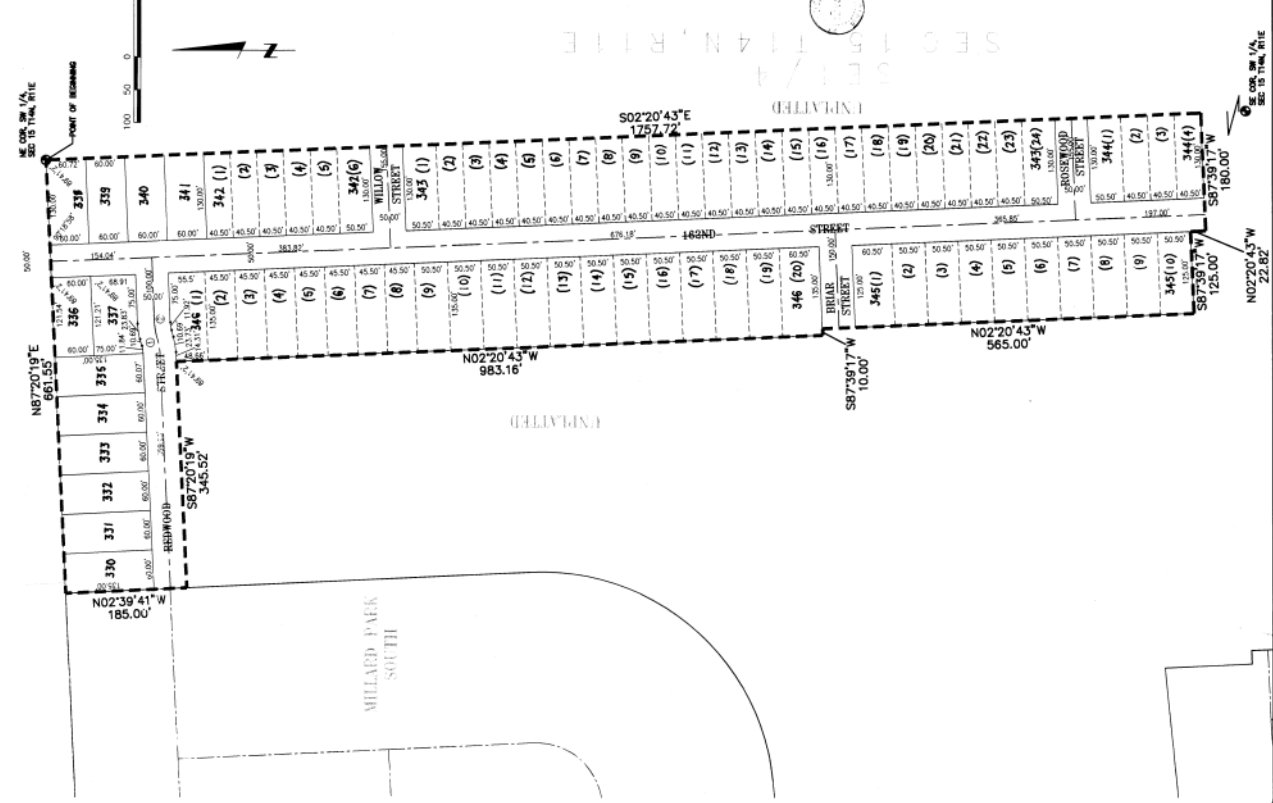
This plat of MILLARD PARK SOUTH 2 was reviewed by the Sorpy County Engineer's Office this 16th day of April, 2003.

**PERSONAL OF QUALIFIED PLANNING COMMISSIONER**

This plat of MILLARD PARK SOUTH 2 was approved and accepted by the Sorpy County Planning Commission on this 16th day of April, 2003.

**PERSONAL OF THE SORPY COUNTY COMMISSIONERS**

This plat of MILLARD PARK SOUTH 2 was approved by the Sorpy County Board of Commissioners on this 16th day of April, 2003.



1 OF 1

71013

project no.

sheet

project MILLARD PARK SOUTH 2

client N.P. DODGE

sheet

DATE: APRIL 03

APPROVED: [Signature]

BY: [Signature]

FOR: [Signature]