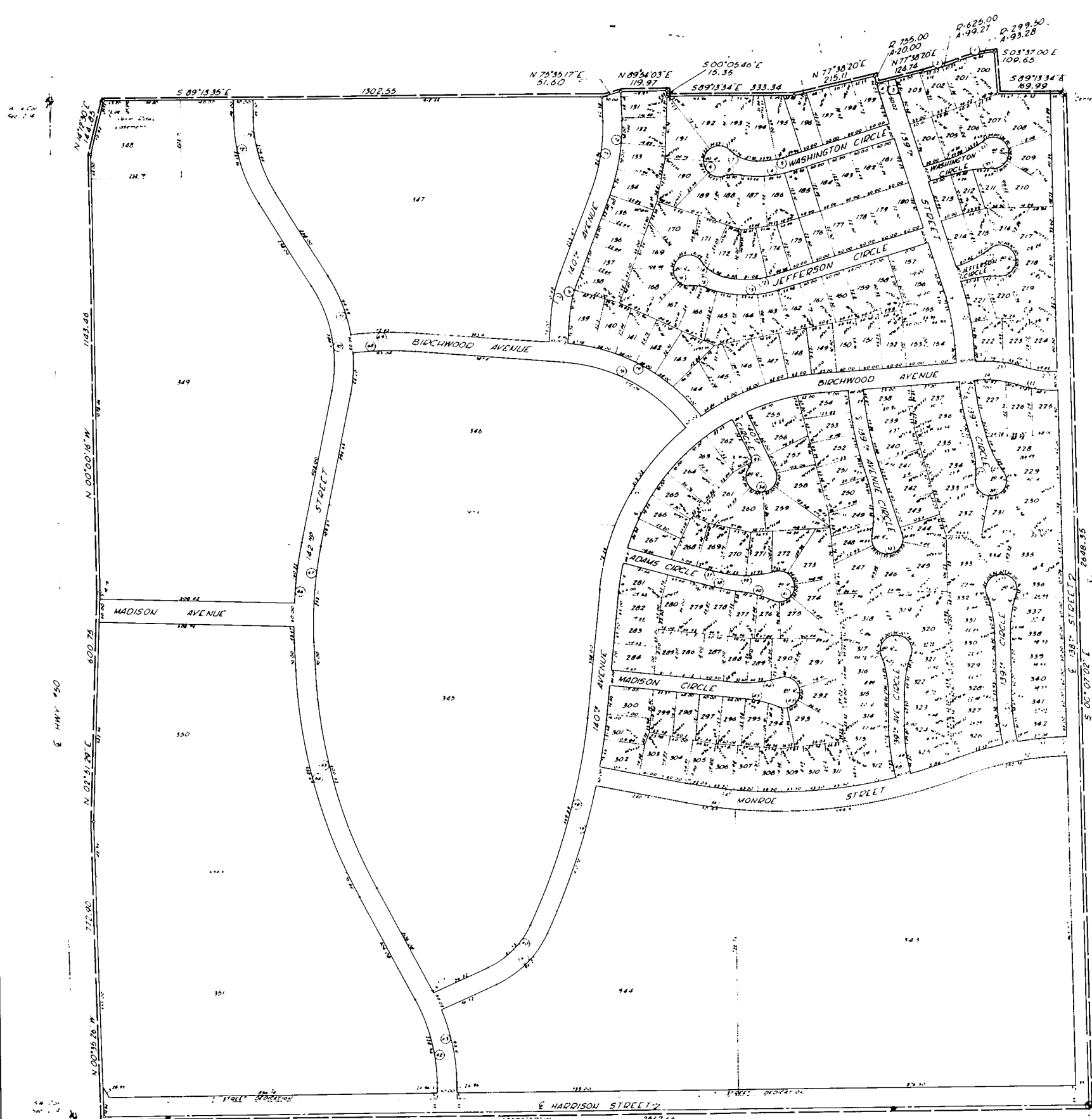
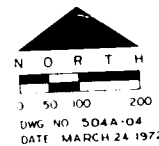


MILLARD HIGHLANDS

A SUBDIVISION LOCATED IN THE SOUTHWEST QUARTER AND A PART OF THE SOUTHWEST QUARTER OF THE NORTHWEST QUARTER, ALL LOCATED IN SECTION 12, TOWNSHIP 14 NORTH, RANGE 11 EAST OF THE 4TH P.M., DOUGLAS COUNTY, NEBRASKA



Curve No.	Bearing	Distance	Chord	Area
1	N 75°55'17"E	51.00		
2	N 89°18'35"E	1302.55		
3	N 89°18'35"E	1302.55		
4	N 89°18'35"E	1302.55		
5	N 89°18'35"E	1302.55		
6	N 89°18'35"E	1302.55		
7	N 89°18'35"E	1302.55		
8	N 89°18'35"E	1302.55		
9	N 89°18'35"E	1302.55		
10	N 89°18'35"E	1302.55		
11	N 89°18'35"E	1302.55		
12	N 89°18'35"E	1302.55		
13	N 89°18'35"E	1302.55		
14	N 89°18'35"E	1302.55		
15	N 89°18'35"E	1302.55		
16	N 89°18'35"E	1302.55		
17	N 89°18'35"E	1302.55		
18	N 89°18'35"E	1302.55		
19	N 89°18'35"E	1302.55		
20	N 89°18'35"E	1302.55		
21	N 89°18'35"E	1302.55		
22	N 89°18'35"E	1302.55		
23	N 89°18'35"E	1302.55		
24	N 89°18'35"E	1302.55		
25	N 89°18'35"E	1302.55		
26	N 89°18'35"E	1302.55		
27	N 89°18'35"E	1302.55		
28	N 89°18'35"E	1302.55		
29	N 89°18'35"E	1302.55		
30	N 89°18'35"E	1302.55		
31	N 89°18'35"E	1302.55		
32	N 89°18'35"E	1302.55		
33	N 89°18'35"E	1302.55		
34	N 89°18'35"E	1302.55		
35	N 89°18'35"E	1302.55		
36	N 89°18'35"E	1302.55		
37	N 89°18'35"E	1302.55		
38	N 89°18'35"E	1302.55		
39	N 89°18'35"E	1302.55		
40	N 89°18'35"E	1302.55		
41	N 89°18'35"E	1302.55		
42	N 89°18'35"E	1302.55		
43	N 89°18'35"E	1302.55		
44	N 89°18'35"E	1302.55		
45	N 89°18'35"E	1302.55		
46	N 89°18'35"E	1302.55		
47	N 89°18'35"E	1302.55		
48	N 89°18'35"E	1302.55		
49	N 89°18'35"E	1302.55		
50	N 89°18'35"E	1302.55		
51	N 89°18'35"E	1302.55		
52	N 89°18'35"E	1302.55		
53	N 89°18'35"E	1302.55		
54	N 89°18'35"E	1302.55		
55	N 89°18'35"E	1302.55		
56	N 89°18'35"E	1302.55		
57	N 89°18'35"E	1302.55		
58	N 89°18'35"E	1302.55		
59	N 89°18'35"E	1302.55		
60	N 89°18'35"E	1302.55		
61	N 89°18'35"E	1302.55		
62	N 89°18'35"E	1302.55		
63	N 89°18'35"E	1302.55		
64	N 89°18'35"E	1302.55		
65	N 89°18'35"E	1302.55		
66	N 89°18'35"E	1302.55		
67	N 89°18'35"E	1302.55		
68	N 89°18'35"E	1302.55		
69	N 89°18'35"E	1302.55		
70	N 89°18'35"E	1302.55		
71	N 89°18'35"E	1302.55		
72	N 89°18'35"E	1302.55		
73	N 89°18'35"E	1302.55		
74	N 89°18'35"E	1302.55		
75	N 89°18'35"E	1302.55		
76	N 89°18'35"E	1302.55		
77	N 89°18'35"E	1302.55		
78	N 89°18'35"E	1302.55		
79	N 89°18'35"E	1302.55		

DEED
 I HEREBY CERTIFY THAT I HAVE MADE A SURVEY OF THE SUBDIVISION DESCRIBED HEREIN AND THAT A BOND HAS BEEN FURNISHED TO THE CITY OF OMAHA TO COVER THE PAYMENT OF NECESSARY TAXES AND FEES. SAID SUBDIVISION IS KNOWN AS MILLARD HIGHLANDS, LOTS 131 THRU 353 AND IS LOCATED IN THE SOUTHWEST QUARTER AND A PART OF THE SOUTHWEST QUARTER OF THE NORTHWEST QUARTER, ALL LOCATED IN SECTION 12, TOWNSHIP 14 NORTH, RANGE 11 EAST OF THE 4TH P.M., DOUGLAS COUNTY, NEBRASKA, MORE PARTICULARLY DESCRIBED AS FOLLOWS:
 BEGINNING AT THE SOUTHWEST CORNER OF SAID SECTION 12, THENCE NORTH 89°18'35" WEST A DISTANCE OF 2767.66 FEET, THENCE NORTH 89°18'35" WEST A DISTANCE OF 722.90 FEET ALONG THE EAST RIGHT-OF-WAY OF STATE HIGHWAY 50, THENCE NORTH 02°57'00" EAST A DISTANCE OF 400.75 FEET, THENCE NORTH 02°57'00" WEST A DISTANCE OF 1143.86 FEET, THENCE NORTH 14°52'00" EAST A DISTANCE OF 144.85 FEET TO A POINT OF INTERSECTION WITH THE NORTH LINE OF SAID SECTION 12, THENCE SOUTH 87°13'30" EAST ALONG SAID NORTH LINE A DISTANCE OF 1302.55 FEET TO THE SOUTHWEST CORNER OF LOT 26 OF MILLARD HIGHLANDS, A PLATTED AND RECORDED SUBDIVISION LOCATED IN SECTION 12, TOWNSHIP 14 NORTH, RANGE 11 EAST, DOUGLAS COUNTY, NEBRASKA, THENCE NORTH 15°15'17" EAST A DISTANCE OF 51.60 FEET ALONG THE SOUTHERN BOUNDARY OF SAID SUBDIVISION OF MILLARD HIGHLANDS, THENCE NORTH 89°18'35" EAST A DISTANCE OF 119.87 FEET, THENCE SOUTH 02°57'00" EAST A DISTANCE OF 15.75 FEET, THENCE SOUTH 02°57'00" EAST A DISTANCE OF 333.34 FEET, THENCE NORTH 77°38'20" EAST A DISTANCE OF 215.11 FEET, THENCE SOUTH 10°11'00" EAST A DISTANCE OF 124.74 FEET, THENCE SOUTH 10°11'00" WEST TO THE LEFT AN ARC LENGTH OF 20.00 FEET, THENCE NORTH 23°20'00" EAST A DISTANCE OF 124.74 FEET, THENCE SOUTH 10°11'00" WEST TO THE RIGHT AN ARC LENGTH OF 20.00 FEET, THENCE SOUTH 23°20'00" EAST A DISTANCE OF 124.74 FEET, THENCE SOUTH 10°11'00" WEST TO THE RIGHT AN ARC LENGTH OF 20.00 FEET, THENCE SOUTH 02°57'00" EAST A DISTANCE OF 109.65 FEET, THENCE SOUTH 89°18'35" EAST A DISTANCE OF 149.98 FEET, THENCE SOUTH 02°57'00" EAST ALONG THE EAST LINE OF SAID SECTION 12, A 4" CENTER-LINE OF STATE STREET, A DISTANCE OF 2648.35 FEET TO THE POINT OF BEGINNING.
 DATE: _____

RESOLUTION
 KNOW ALL MEN BY THESE PRESENTS, THAT WE, THE CITY OF OMAHA, NEBRASKA, COMMISSIONER, RALPH J. HEARIN, PRESIDENT (EMERITUS), AND BOARD OF CITY COMMISSIONERS, HUSBAND AND WIFE (EMERITUS) BEING SOLE OWNERS AND PROPRIETORS OF THE LAND DESCRIBED WITHIN THE SURVEYOR'S CERTIFICATE AND WITHIN THIS PLAN HAVE GRANTED SAID LAND TO BE SUBDIVIDED INTO LOTS AND STREETS TO BE NUMBERED AND NAMED AS SHOWN SAID SUBDIVISION TO BE HEREBY KNOWN AS MILLARD HIGHLANDS, LOTS 131 THRU 353 AND WE HEREBY CERTIFY AND APPROVE OF THE DISPOSITION OF OUR PROPERTY AS SHOWN ON THIS PLAN, AND WE HEREBY DELEGATE TO THE PUBLIC FOR PUBLIC USE THE STREETS AND OTHER AND UTILITY EASEMENTS AS SHOWN ON THIS PLAN, WE DO FURTHER GRANT A PERPETUAL LICENSE IN FAVOR OF AND GRANTED TO THE OMAHA PUBLIC POWER DISTRICT AND THE NORTHWEST BELL TELEPHONE COMPANY, THEIR SUCCESSORS AND ASSIGNS TO ERECT AND OPERATE, MAINTAIN, REPAIR AND RENEW WIRES WITHIN THE NECESSARY SUPPORTS, SUBSTANCES, CROSS ARMS, CUTS AND HOODINGS AND OTHER INSTRUMENTALITIES AND TO ERECT THEREON WIRES FOR THE CARRYING AND TRANSMISSION OF THE ELECTRIC CURRENT FOR LIGHTS, HEAT AND POWER, AND FOR ALL TELEPHONE AND TELEGRAPH MESSAGE SERVICE OVER, UPON OR UNDER A FIVE FOOT STRIP OF LAND ADJOINING THE NEAR AND FURTHER BOUNDARY OF SAID LOTS (THESE EASEMENTS APPLY ONLY TO LAND WITHIN SAID ADDITION), SAID LICENSE BEING GRANTED FOR THE USE AND BENEFIT FOR ALL PRESENT AND FUTURE OWNERS OF LOTS IN SAID ADDITION, PROVIDED HOWEVER, THAT SAID LOT LINE EASEMENT IS GRANTED UPON THE SPECIFIC CONDITION THAT IF BOTH SAID UTILITIES COMPANY FAIL TO CONSTRUCT WIRES AND WIRES ALONG ANY OF SAID LOT LINES WITHIN SIX MONTHS OF THE DATE HEREON OR IF ANY WIRE OR WIRES ARE CONSTRUCTED BUT HEREAFTER REMOVED WITHOUT REPLACEMENT WITHIN SIXTY DAYS AFTER THEIR REMOVAL THEN THIS SIX MONTH EXEMPTION SHALL AUTOMATICALLY TERMINATE AND BECOME VOID AS TO SUCH UNREMOVED OR ABANDONED EASEMENT WIRES.
 IN WITNESS WHEREOF WE HEREBY SET OUR HANDS THIS 26 DAY OF January, A.D. 1972

APPROVAL OF CITY ENGINEER
 STATE OF NEBRASKA
 COUNTY OF DOUGLAS
 ON THIS 26 DAY OF January, A.D. 1972, BEFORE ME, A NOTARY PUBLIC, FULLY COMMISSIONED AND QUALIFIED IN AND FOR SAID COUNTY AND STATE, PERSONALLY CAME RALPH J. HEARIN, PRESIDENT OF MILLARD HIGHLANDS, INC., A NEBRASKA CORPORATION, PERSONALLY KNOWN TO ME TO BE THE LEGITIMATE PERSON WHO EXECUTED THE FOREGOING DECLARATION AND HE ACKNOWLEDGED THAT HE EXECUTED SAID DECLARATION AS HIS VOLUNTARY ACT AND DEED AS SUCH OFFICER AND AS THE AUTHORITY OF SAID CORPORATION, AND THE SEAL OF SAID CORPORATION WAS THEREBY AFFIXED BY HIS AUTHORITY.
 IN WITNESS WHEREOF I HAVE HEREON SET MY HAND AND SEAL AT OMAHA, NEBRASKA, IN SAID COUNTY THE DATE LAST MENTIONED.

APPROVAL OF PLANNING BOARD
 STATE OF NEBRASKA
 COUNTY OF DOUGLAS
 ON THIS 26 DAY OF January, A.D. 1972, BEFORE ME, A NOTARY PUBLIC, FULLY COMMISSIONED AND QUALIFIED IN AND FOR SAID COUNTY AND STATE, PERSONALLY CAME RALPH J. HEARIN, PRESIDENT OF MILLARD HIGHLANDS, INC., PERSONALLY KNOWN TO ME TO BE THE LEGITIMATE PERSON WHO EXECUTED THE FOREGOING DECLARATION AND HE ACKNOWLEDGED THAT HE EXECUTED SAID DECLARATION AS HIS VOLUNTARY ACT AND DEED.
 IN WITNESS WHEREOF I HAVE HEREON SET MY HAND AND SEAL AT OMAHA, NEBRASKA, IN SAID COUNTY THE DATE LAST MENTIONED.

APPROVAL OF PLANNING BOARD
 THIS PLAN OF MILLARD HIGHLANDS WAS APPROVED BY THE PLANNING BOARD ON THIS 11 DAY OF January, A.D. 1972.

APPROVAL OF OMAHA CITY ENGINEER
 I HEREBY APPROVE OF THIS PLAN OF MILLARD HIGHLANDS ON THIS 26 DAY OF January, A.D. 1972.

 CITY ENGINEER

APPROVAL OF OMAHA CITY PLANNING BOARD
 THIS PLAN OF MILLARD HIGHLANDS WAS APPROVED BY THE OMAHA CITY PLANNING BOARD ON THIS 11 DAY OF January, A.D. 1972.

 CITY PLANNING BOARD

JOINT TREASURER'S CERTIFICATE
 THIS IS TO CERTIFY THAT I FIND NO MILLAGE OR SPECIAL TAXES DUE ON THIS SUBDIVISION'S CERTIFICATE AND ENRANCED WITHIN THIS PLAN AS SHOWN.

 DATE: _____

PROPERTY DESCRIBED IN

GOLLEHON, SCHEMMER & ASSOCIATES, INC.
 ARCHITECTS - ENGINEERS - PLANNERS
 OMAHA, NEBRASKA - DAVENPORT, IOWA

46 ENTERED IN NUMERICAL INDEX AND RECORDED IN THE REGISTER OF DEEDS OFFICE IN DOUGLAS COUNTY, NEBRASKA 58.80
 8 DAY OF May 1972 AT 2:14 P.M. C. HAROLD OSTLER, REGISTER OF DEEDS

BOOK 1479