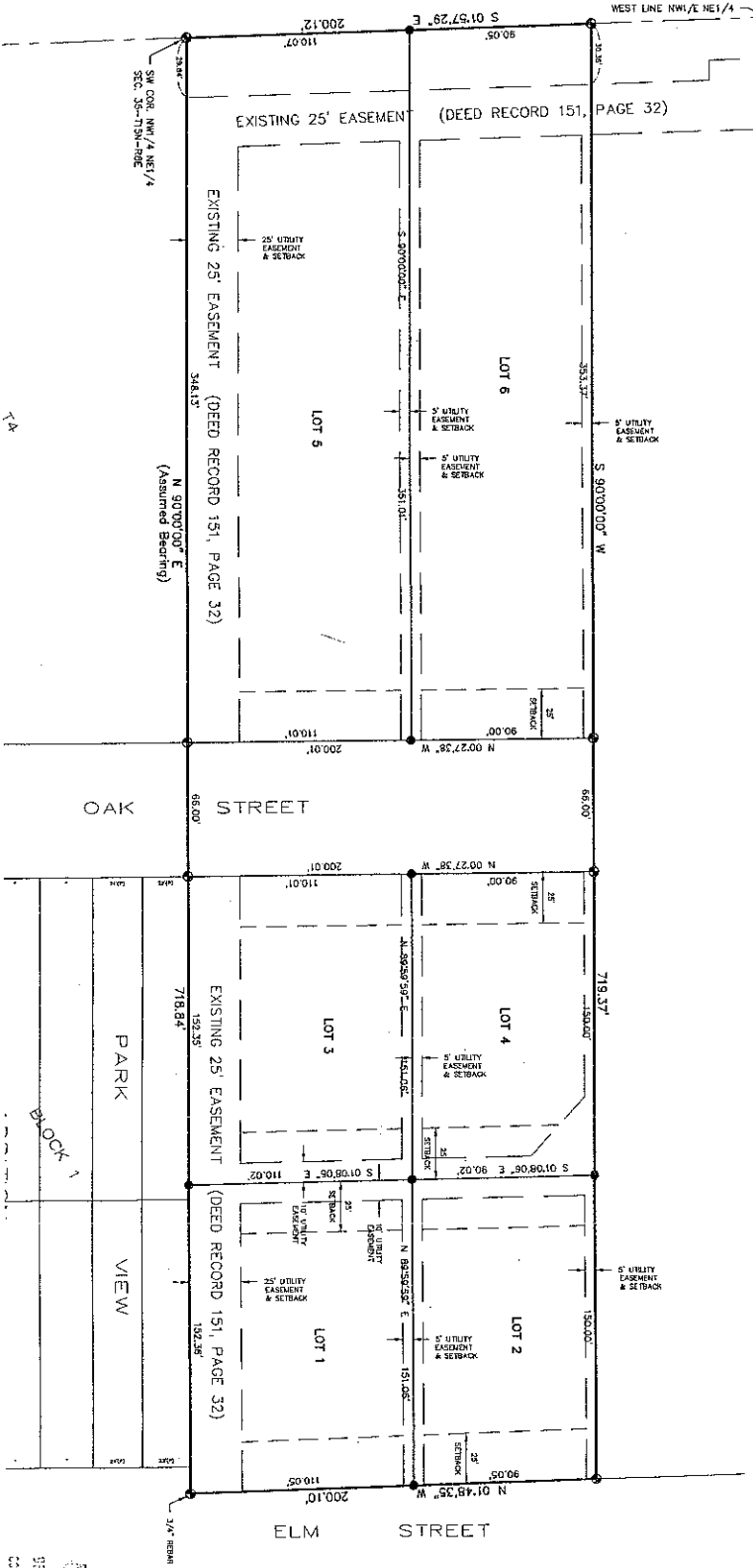
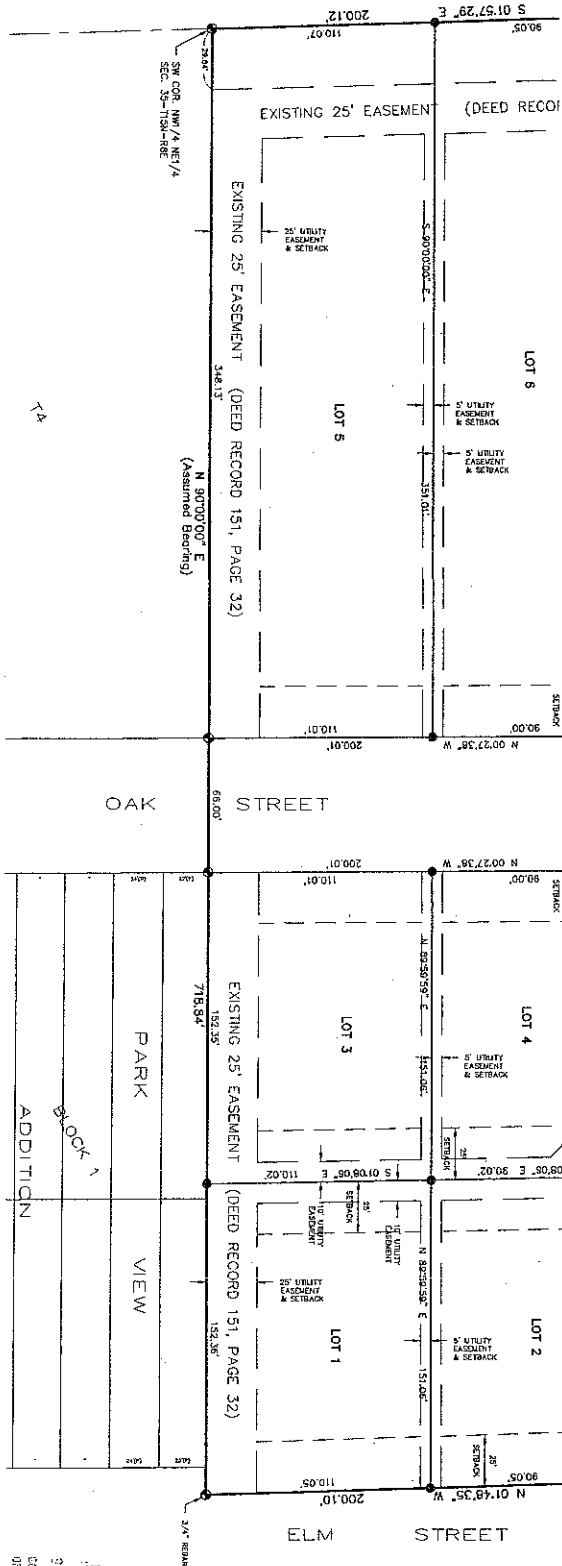


"FINAL PLAT"
MEAD DEVELOPMENT SUBDIVISION
 to the Village of Mead
 Part of the Northwest Quarter of the Northeast Quarter
 Section 35, Township 15 North, Range 8 East
 Saunders County, Nebraska
 OWNER: Mead Development Corporation



RECORDED
 05 JUN -2 11 9 55
 3-11-99



REGISTERED
 PROFESSIONAL SURVEYOR
 916 347-2199
 LICENSE NO. 4894
 DATE 01/19/87

THE ABOVE PLAT was duly approved by the Village Board of Mead, Saunders County, Nebraska, on the 21st day of July, 1986, by Ordinance No. 41-12.

 Village Clerk

This is to certify that this instrument was filed for record in the Register of Deeds Office, on the _____ day of _____, 1986, in Book _____ Page _____

 Register of Deeds

This grouping plat was approved by the Mead Planning Commission on the 29 day of June, 1986.

 Chairperson of Planning Commission

COUNTY SURVEYOR'S APPROVAL
 I hereby approve of the numbering of lots 1 thru 6 of "Mead Development Subdivision", located in Section 35, Township 15 North, Range 8 East of the Sixth, P.M. Saunders County, Nebraska, on the 21st day of July, 1986.

 County Surveyor

This is to certify that I found no register of special taxes, due or delinquent against this property described in the Penultimate Description and embraced in this plat, as shown by the records of this office, this 22nd day of July, 1986.

 Saunders County Treasurer



SUBDIVISION'S STATEMENT
 I, County Surveyor, do hereby certify that "Mead Development Subdivision" has been surveyed by me or under my supervision, and that the other boundary and lot corners of said "Mead Development Subdivision" have been established and marked in accordance with the survey plan and plat of the subdivision of said "Mead Development Subdivision", as shown in the Penultimate Description.

 County Surveyor



STP
 COI
 14