

**MAYFAIR** 98-0709S

LOTS 1 THRU 105 INCLUDE & OULOT 'C'  
STAMPED COPY

FILED SAMPY CO. NE  
INSTRUMENT NUMBER  
98 MAR 25 PM 2:59  
REGISTER OF DEEDS

EXEMPTION  
I, the undersigned, do hereby certify that the above described property and that the City of Mayfair, Wisconsin, is exempt from the provisions of the Wisconsin Uniform Gifts to Minors Act, Chapter 63.01, Stats., inasmuch as the property is being transferred to the City of Mayfair, Wisconsin, for the purpose of providing for the maintenance and care of the property of the City of Mayfair, Wisconsin.

Sold tract of land contains an area of 62.328 acres, more or less.  
Said tract of land contains an area of 62.328 acres, more or less, of



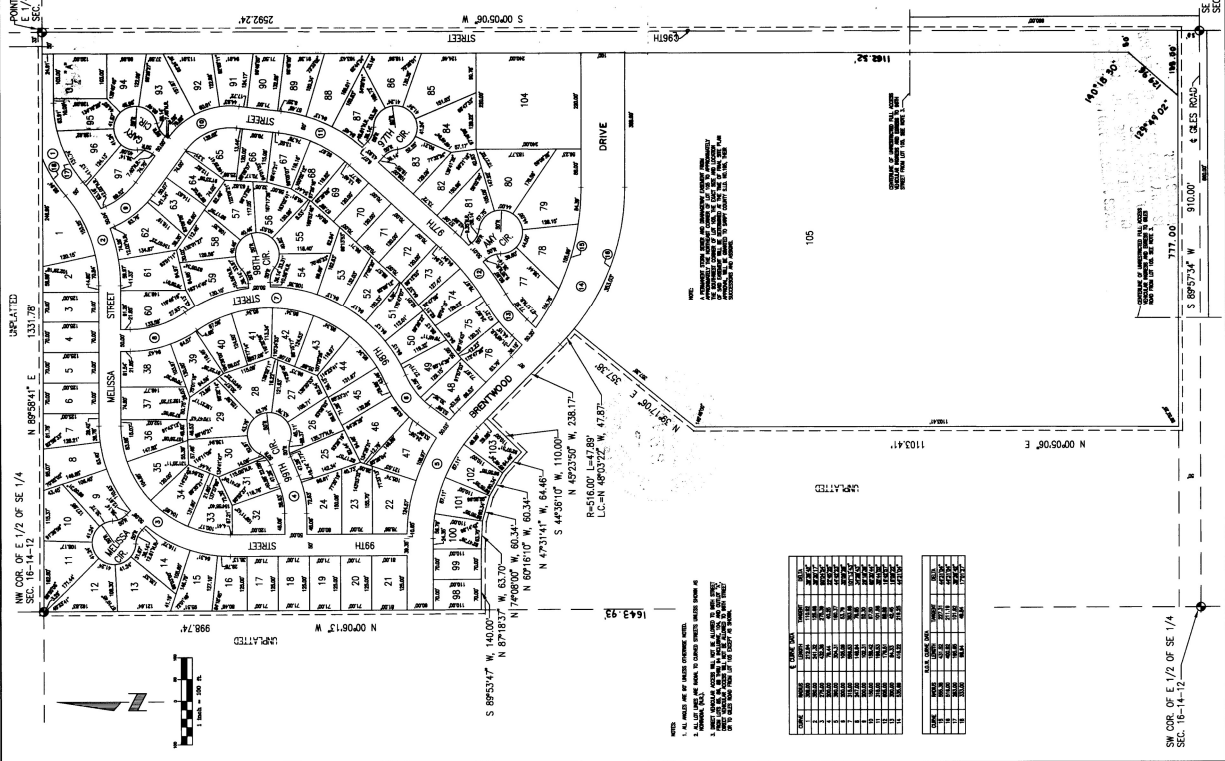
ACCEPTANCE BY LA VISTA CITY COUNCIL  
This deed of conveyance and plat map (shown) has been accepted by the City Planning Commission on the 21st day of March, 1998.

RECORD OF SALES COUNTY SURVEYOR  
The plat of Mayfair, Wisconsin (shown) has been filed by the office of the Survey County Surveyor on the 21st day of March, 1998.

COUNTY TREASURER'S CERTIFICATE  
TAXES ASSESSED AND LEVIED FOR THE CURRENT YEAR ARE NEITHER DUE NOR PAID. TREASURERS CERTIFICATION IS ONLY VALID UNTIL DECEMBER 30TH OF THIS YEAR.



ACKNOWLEDGEMENT OF DEED  
I, the undersigned, do hereby certify that the above described property and that the City of Mayfair, Wisconsin, is exempt from the provisions of the Wisconsin Uniform Gifts to Minors Act, Chapter 63.01, Stats., inasmuch as the property is being transferred to the City of Mayfair, Wisconsin, for the purpose of providing for the maintenance and care of the property of the City of Mayfair, Wisconsin.



LOT	AREA	OWNER
1	0.10	City of Mayfair
2	0.10	City of Mayfair
3	0.10	City of Mayfair
4	0.10	City of Mayfair
5	0.10	City of Mayfair
6	0.10	City of Mayfair
7	0.10	City of Mayfair
8	0.10	City of Mayfair
9	0.10	City of Mayfair
10	0.10	City of Mayfair
11	0.10	City of Mayfair
12	0.10	City of Mayfair
13	0.10	City of Mayfair
14	0.10	City of Mayfair
15	0.10	City of Mayfair
16	0.10	City of Mayfair
17	0.10	City of Mayfair
18	0.10	City of Mayfair
19	0.10	City of Mayfair
20	0.10	City of Mayfair
21	0.10	City of Mayfair
22	0.10	City of Mayfair
23	0.10	City of Mayfair
24	0.10	City of Mayfair
25	0.10	City of Mayfair
26	0.10	City of Mayfair
27	0.10	City of Mayfair
28	0.10	City of Mayfair
29	0.10	City of Mayfair
30	0.10	City of Mayfair
31	0.10	City of Mayfair
32	0.10	City of Mayfair
33	0.10	City of Mayfair
34	0.10	City of Mayfair
35	0.10	City of Mayfair
36	0.10	City of Mayfair
37	0.10	City of Mayfair
38	0.10	City of Mayfair
39	0.10	City of Mayfair
40	0.10	City of Mayfair
41	0.10	City of Mayfair
42	0.10	City of Mayfair
43	0.10	City of Mayfair
44	0.10	City of Mayfair
45	0.10	City of Mayfair
46	0.10	City of Mayfair
47	0.10	City of Mayfair
48	0.10	City of Mayfair
49	0.10	City of Mayfair
50	0.10	City of Mayfair
51	0.10	City of Mayfair
52	0.10	City of Mayfair
53	0.10	City of Mayfair
54	0.10	City of Mayfair
55	0.10	City of Mayfair
56	0.10	City of Mayfair
57	0.10	City of Mayfair
58	0.10	City of Mayfair
59	0.10	City of Mayfair
60	0.10	City of Mayfair
61	0.10	City of Mayfair
62	0.10	City of Mayfair
63	0.10	City of Mayfair
64	0.10	City of Mayfair
65	0.10	City of Mayfair
66	0.10	City of Mayfair
67	0.10	City of Mayfair
68	0.10	City of Mayfair
69	0.10	City of Mayfair
70	0.10	City of Mayfair
71	0.10	City of Mayfair
72	0.10	City of Mayfair
73	0.10	City of Mayfair
74	0.10	City of Mayfair
75	0.10	City of Mayfair
76	0.10	City of Mayfair
77	0.10	City of Mayfair
78	0.10	City of Mayfair
79	0.10	City of Mayfair
80	0.10	City of Mayfair
81	0.10	City of Mayfair
82	0.10	City of Mayfair
83	0.10	City of Mayfair
84	0.10	City of Mayfair
85	0.10	City of Mayfair
86	0.10	City of Mayfair
87	0.10	City of Mayfair
88	0.10	City of Mayfair
89	0.10	City of Mayfair
90	0.10	City of Mayfair
91	0.10	City of Mayfair
92	0.10	City of Mayfair
93	0.10	City of Mayfair
94	0.10	City of Mayfair
95	0.10	City of Mayfair
96	0.10	City of Mayfair
97	0.10	City of Mayfair
98	0.10	City of Mayfair
99	0.10	City of Mayfair
100	0.10	City of Mayfair
101	0.10	City of Mayfair
102	0.10	City of Mayfair
103	0.10	City of Mayfair
104	0.10	City of Mayfair
105	0.10	City of Mayfair

*Handwritten:* Bird  
Bow 5-8-98

*Handwritten:* Hylar & Ombry  
Notary Public, State of Wisconsin, Commission Expires 12-31-98

000005

SW COR OF E 1/2 OF SE 1/4  
SEC. 16-14-12