

APPROX. LOCATION OF PIPELINE eas. N¹/₂ SW¹/₄ 3-15-12

HUMMINGBIRD HEIGHTS

60	85	60	69.65	68	68	67.5	"	"	"	"	67.5	68
67.20	86	65	"	"	"	"	"	"	"	"	"	"
15.51	139.26	50	69.65	68	68	67.5	"	"	"	"	67.5	68

AMES AVE

68.19	70.76	64.03	56.66	64	"	64	64	"	"	"	64	72.58	50
72	71	70	69	68	67	66	65	64	63	62	61		70
104.41	63.84	64	"	"	64	69	"	"	"	69	70.79		"
49	50	51	52	53	54	55	56	57	58	59	60		"
105	63.29	64	"	"	64	69	"	"	"	"	69		70

TAYLOR ST

62.76	105.79	62.5	"	62.5	68	70	"	"	70	69	71	
37	36	35	34	33	32	31	30	29	28	27	26	
63.35	105.20	62.5	"	62.5	68	28.30	70.51	"	70.51	23.28	69.25	
12	13	14	15	16	17	18	19	20	21	25	25	
62.5	105.59	62.5	65.78	75.20	70.95	68.4	80.08	70.51	23.28	30.33	115.72	

94th ST

(HUMMINGBIRD HEIGHTS)

432/223

RUGGLES ST

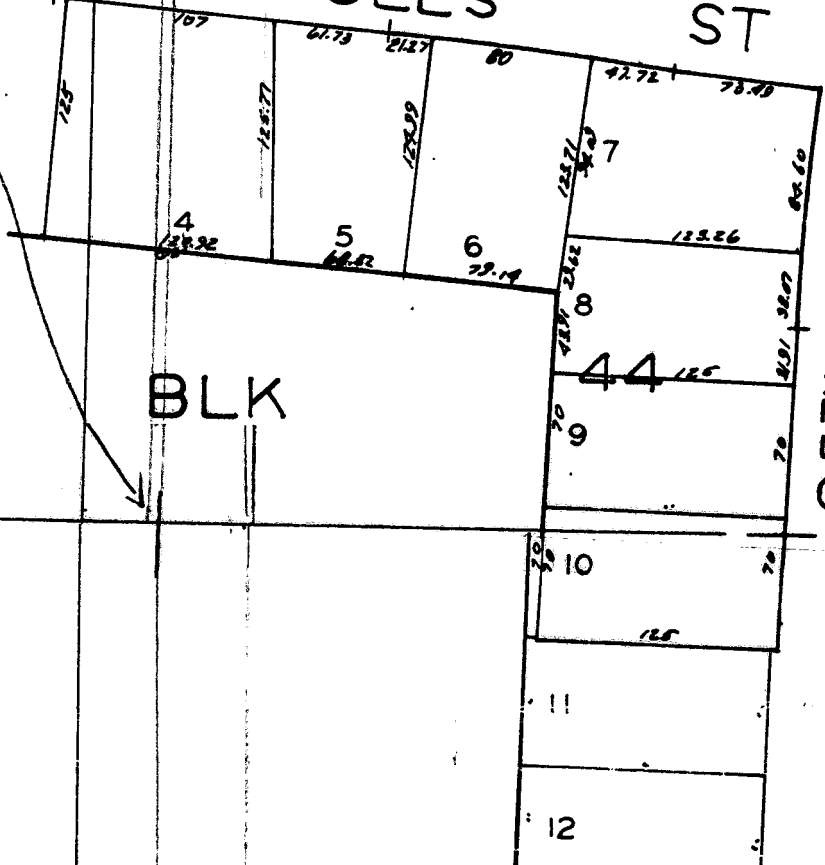
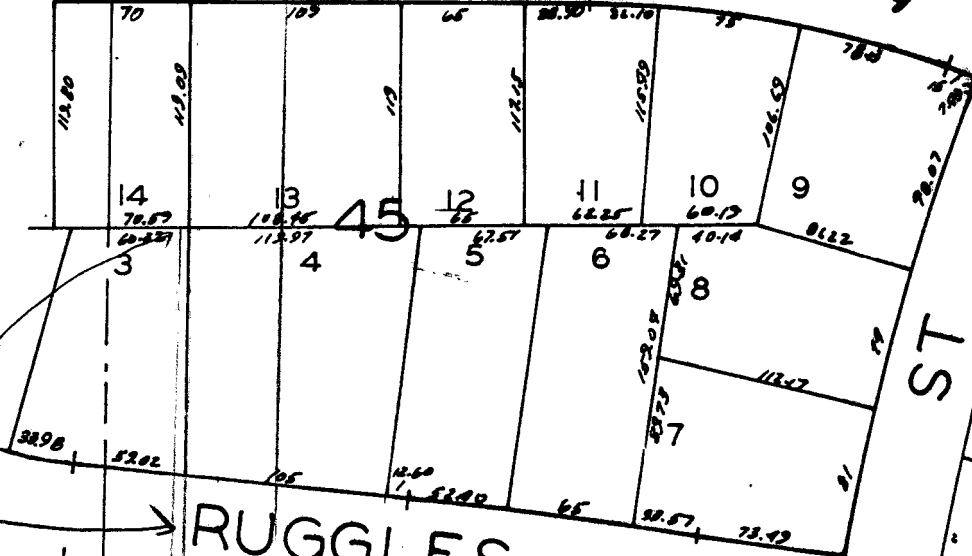
BLK

95TH

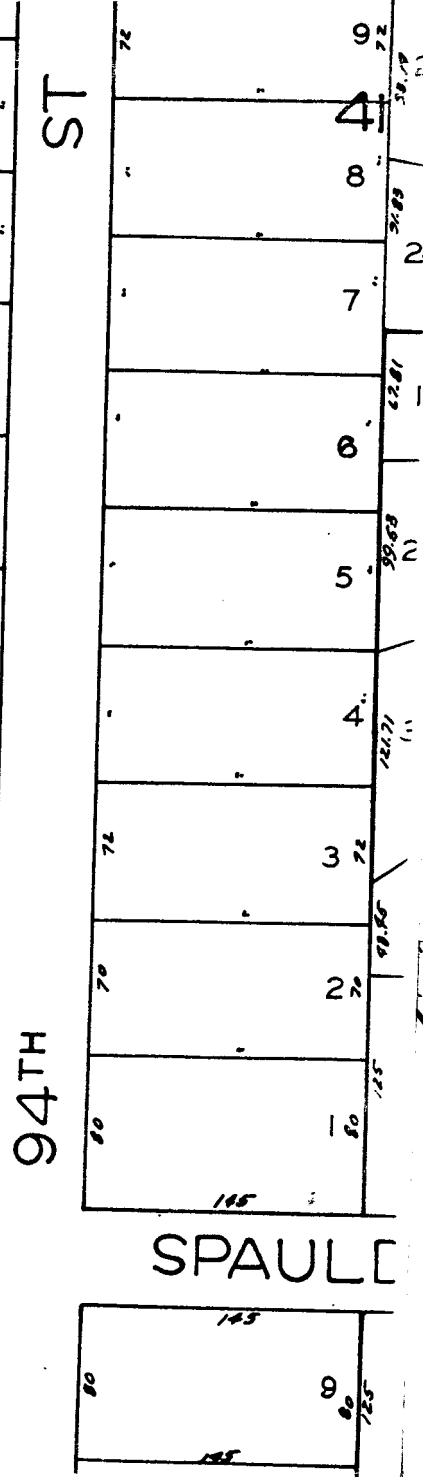
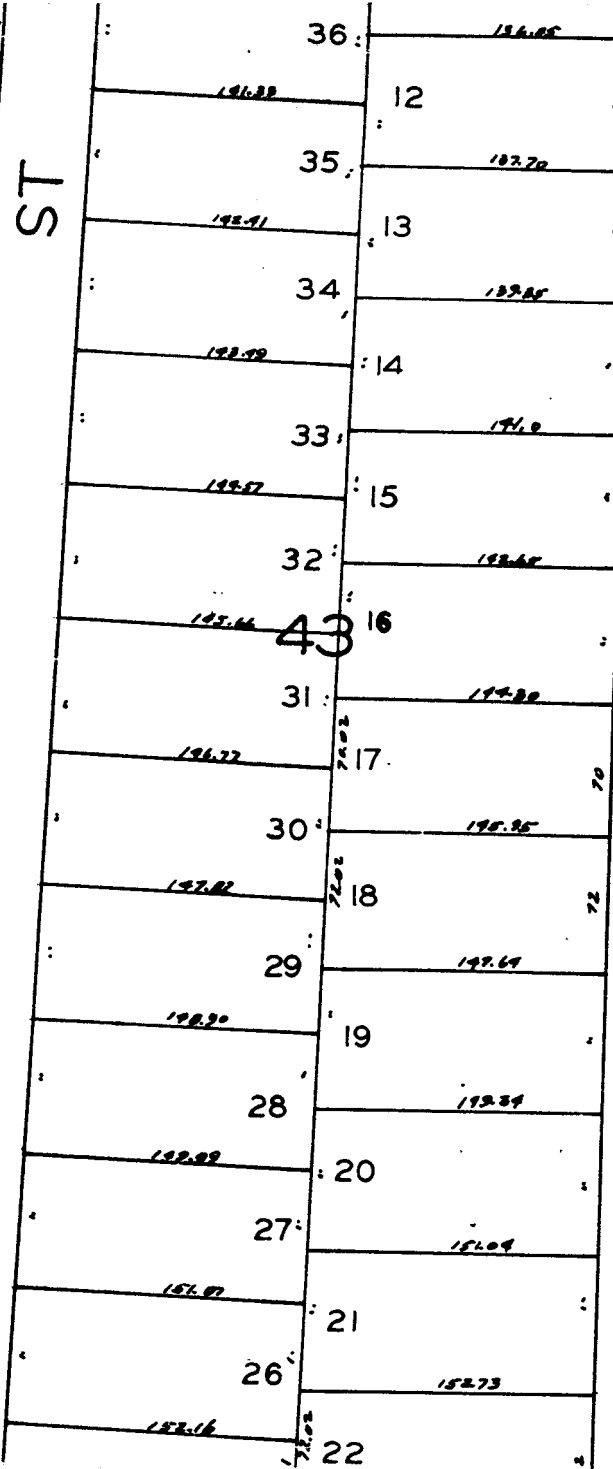
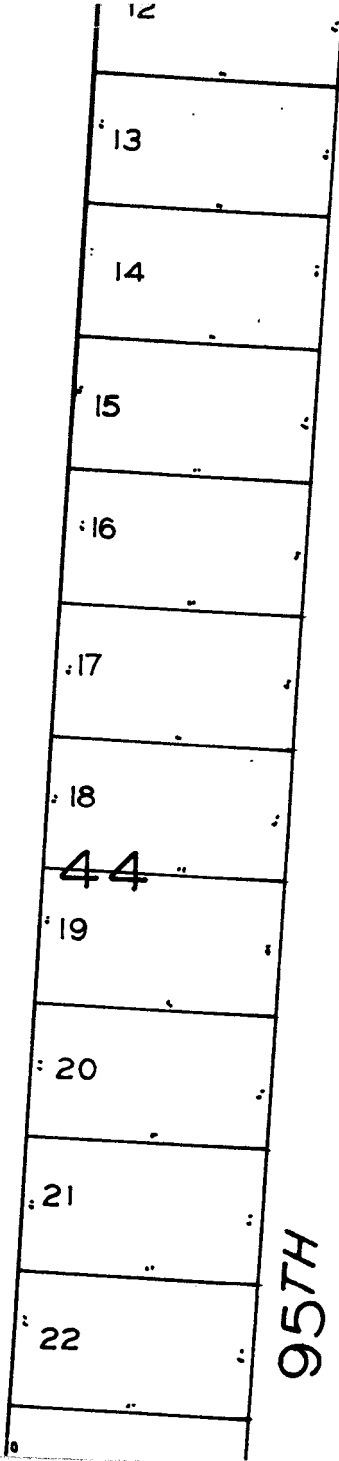
ST

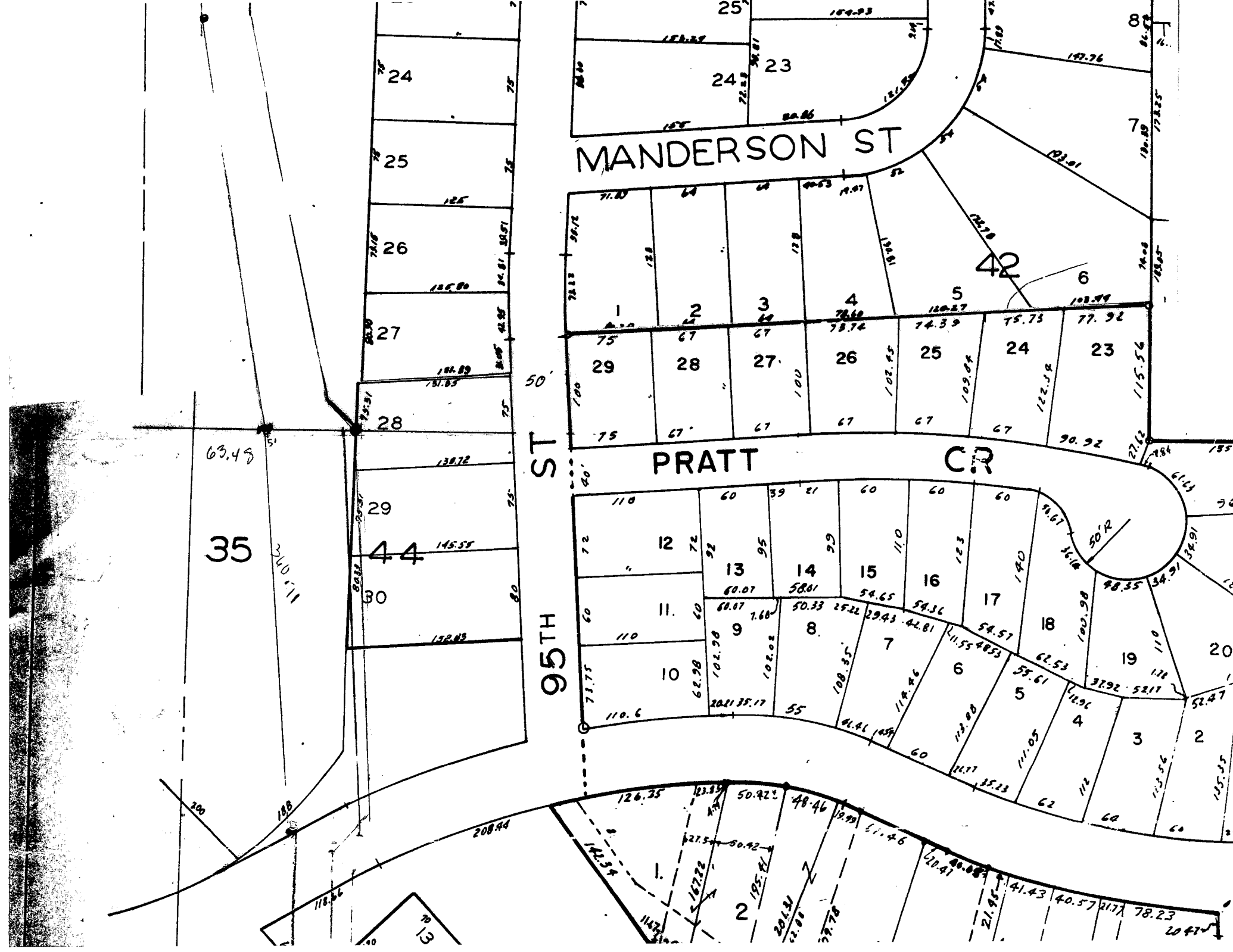
ST

94TH



BLK 35





35

63.43

110.11

44

29

30

28

27

26

25

24

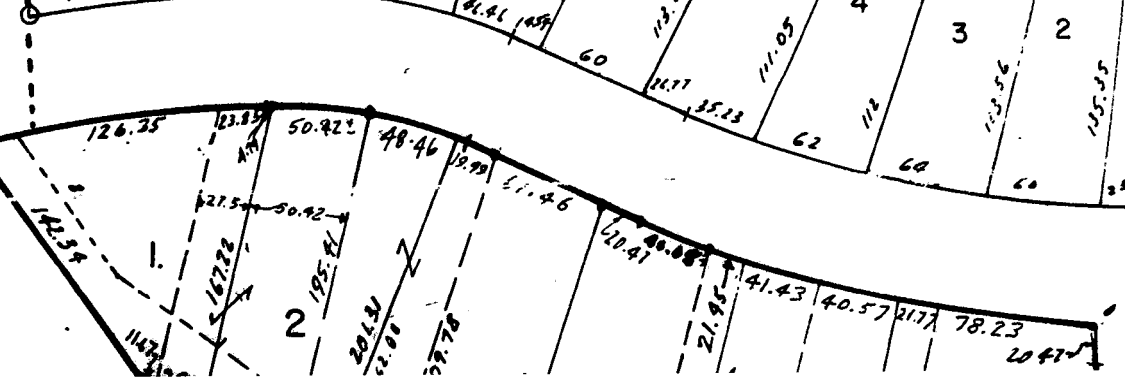
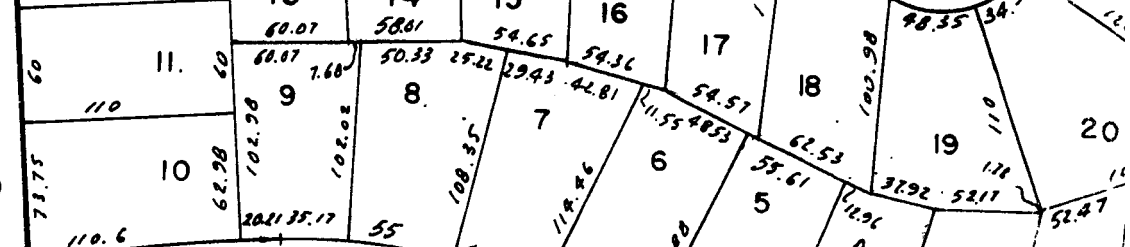
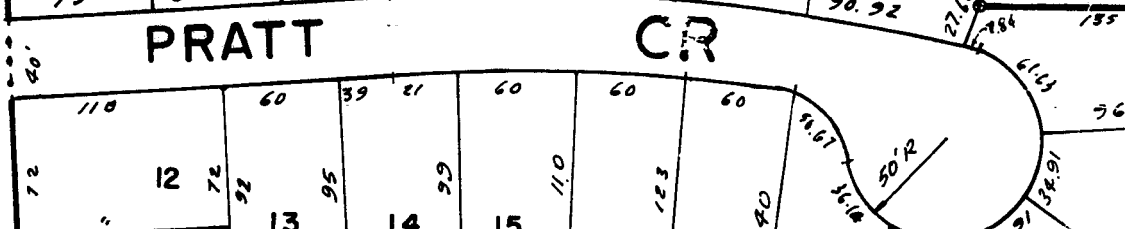
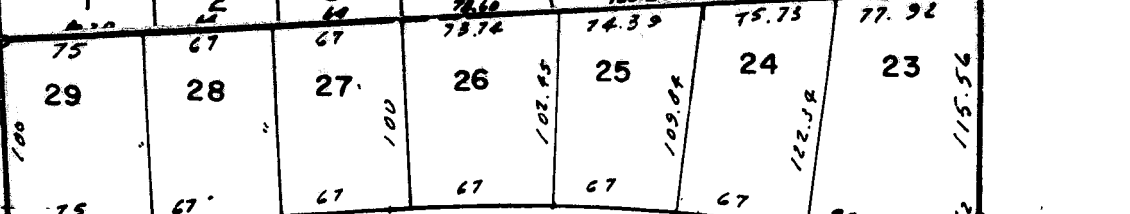
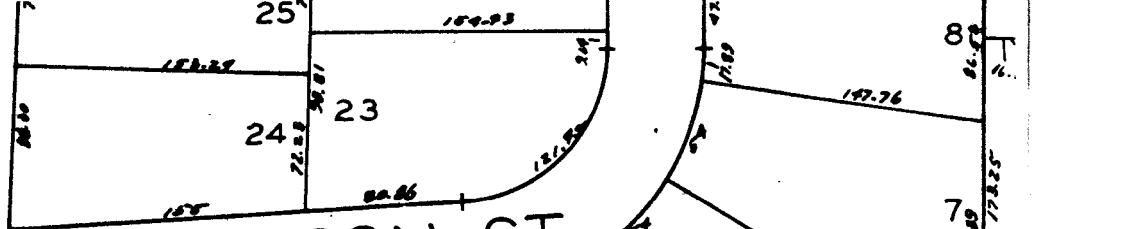
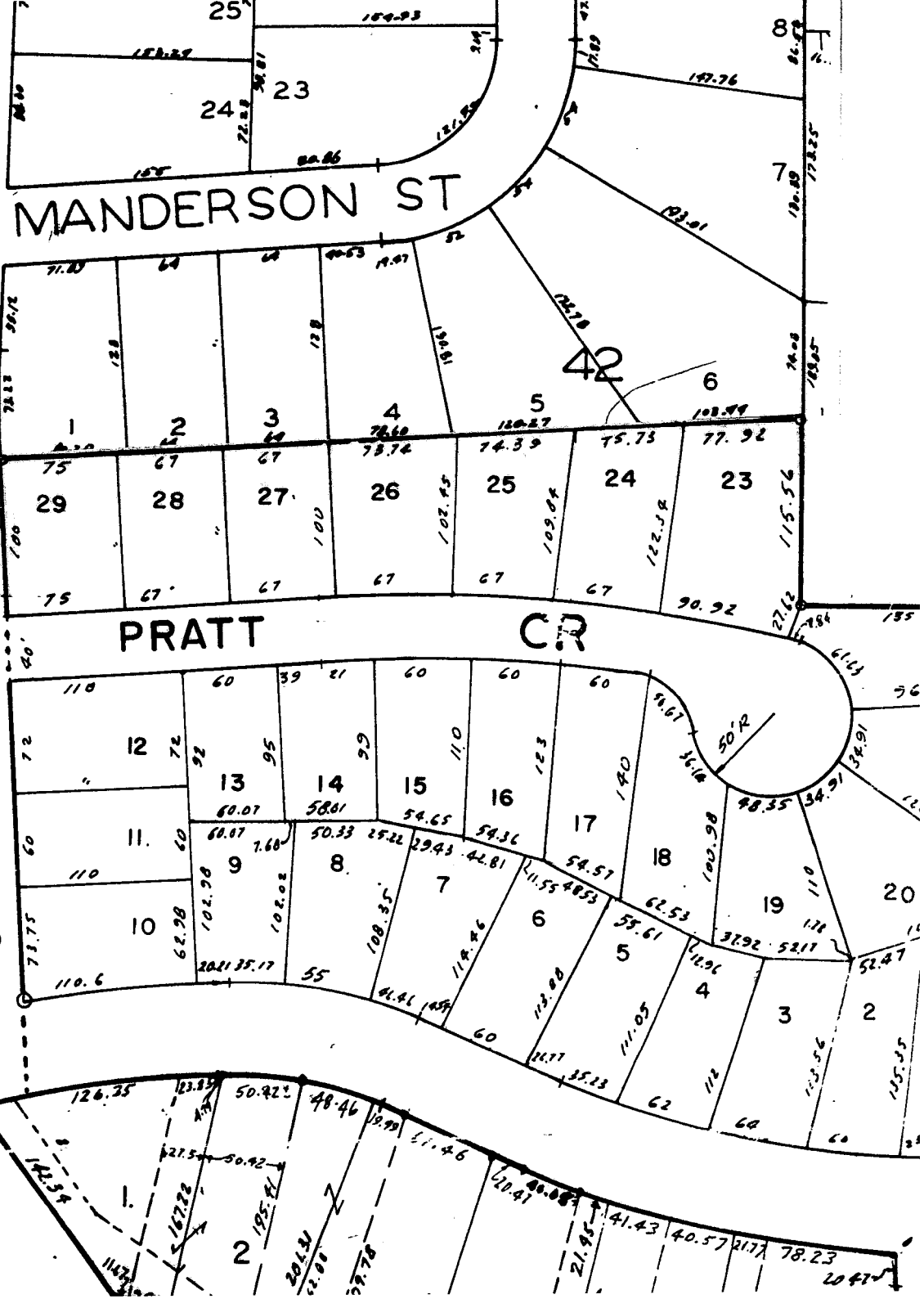
50'
ST
95TH

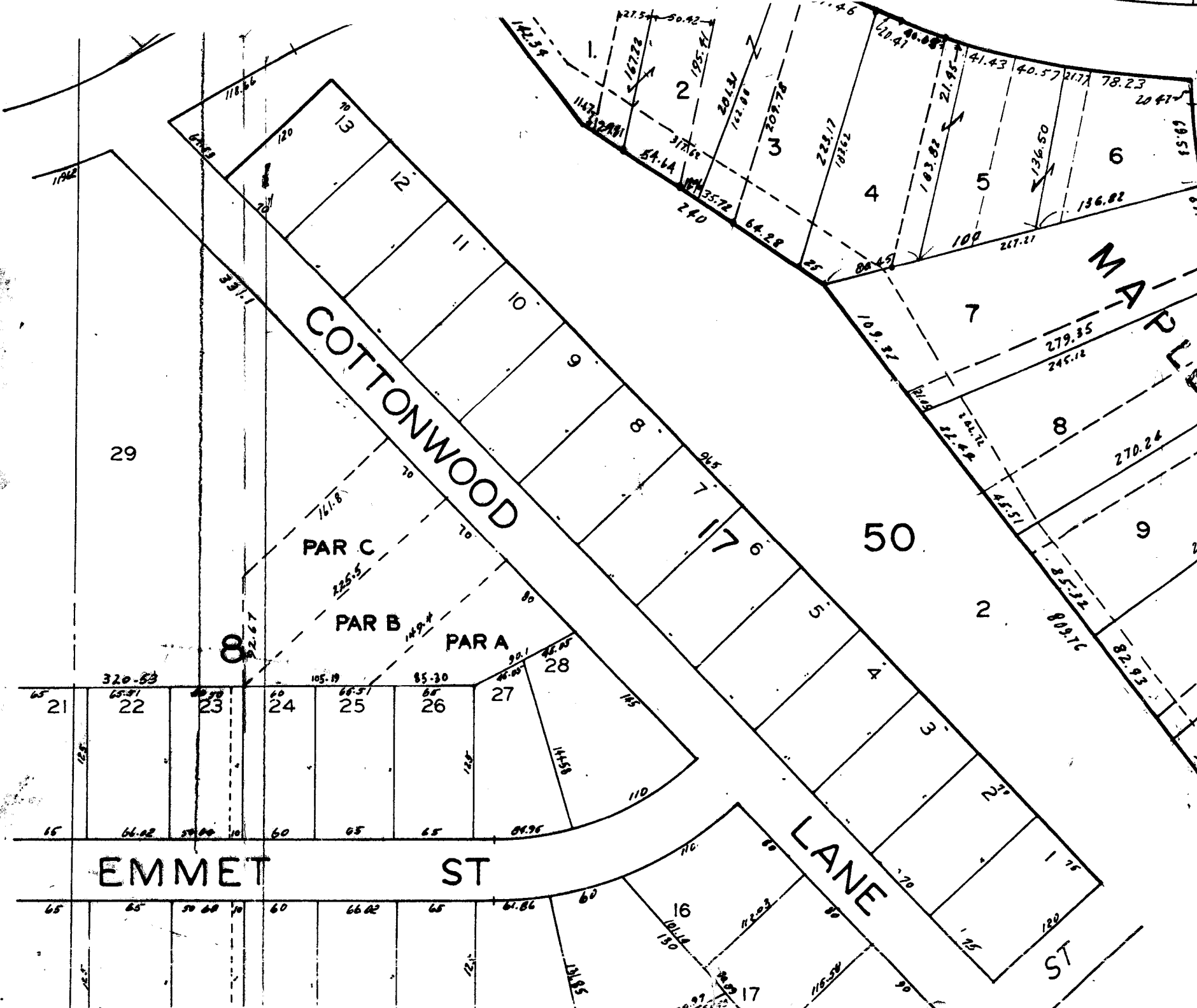
MANDERSON ST

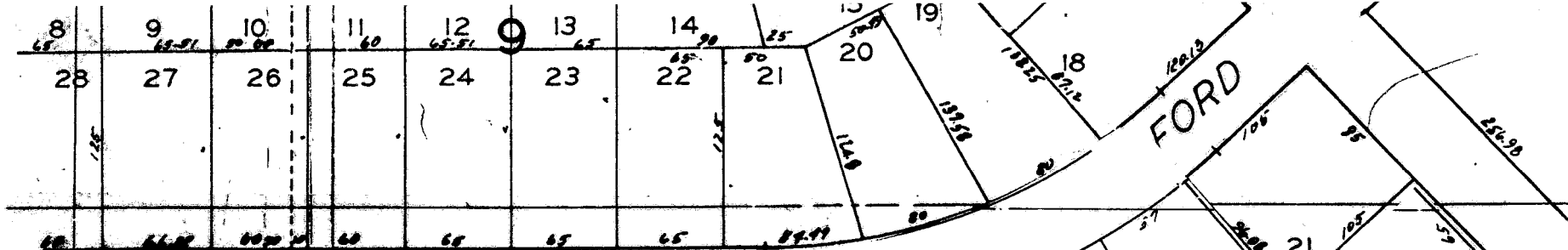
PRATT CR

42

6



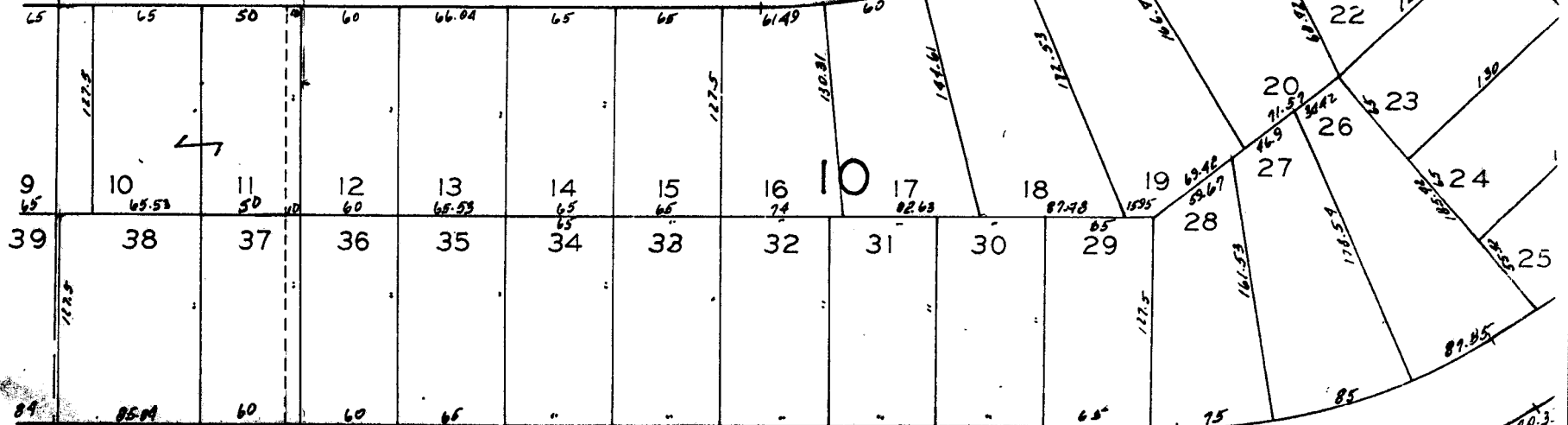




BEDFORD

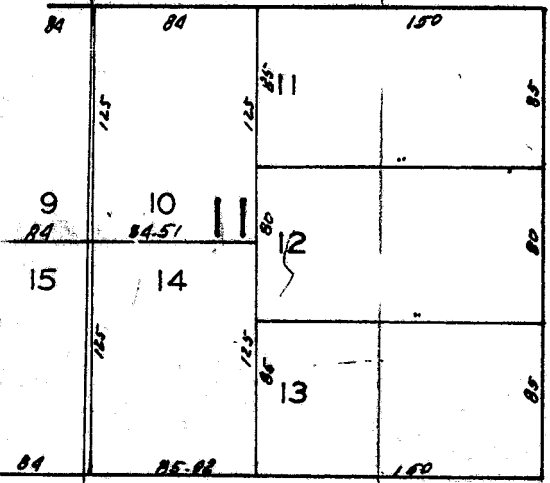
ST

FORD

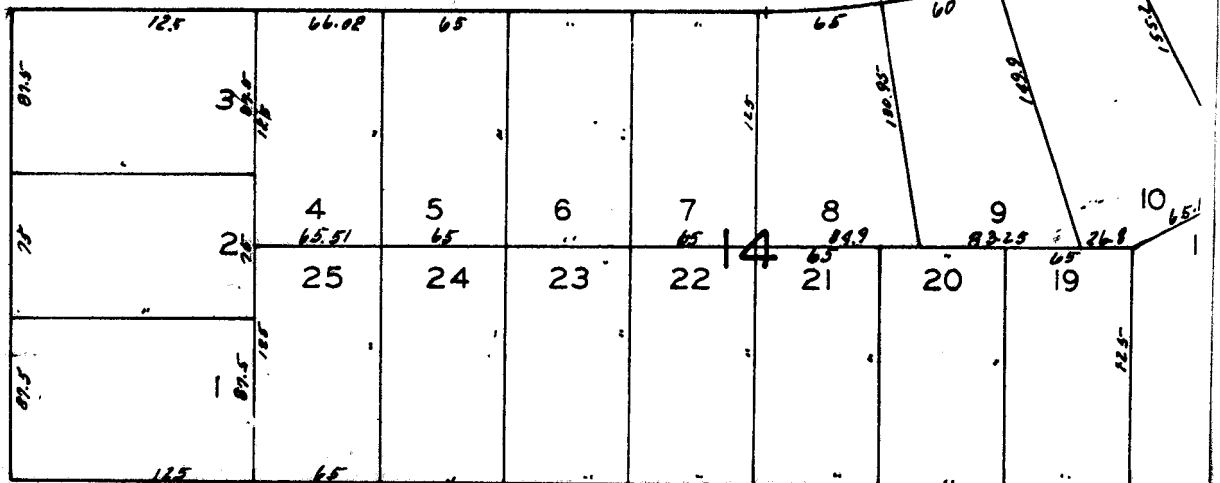


SPENCER

ST



ST



WIRT

ST

