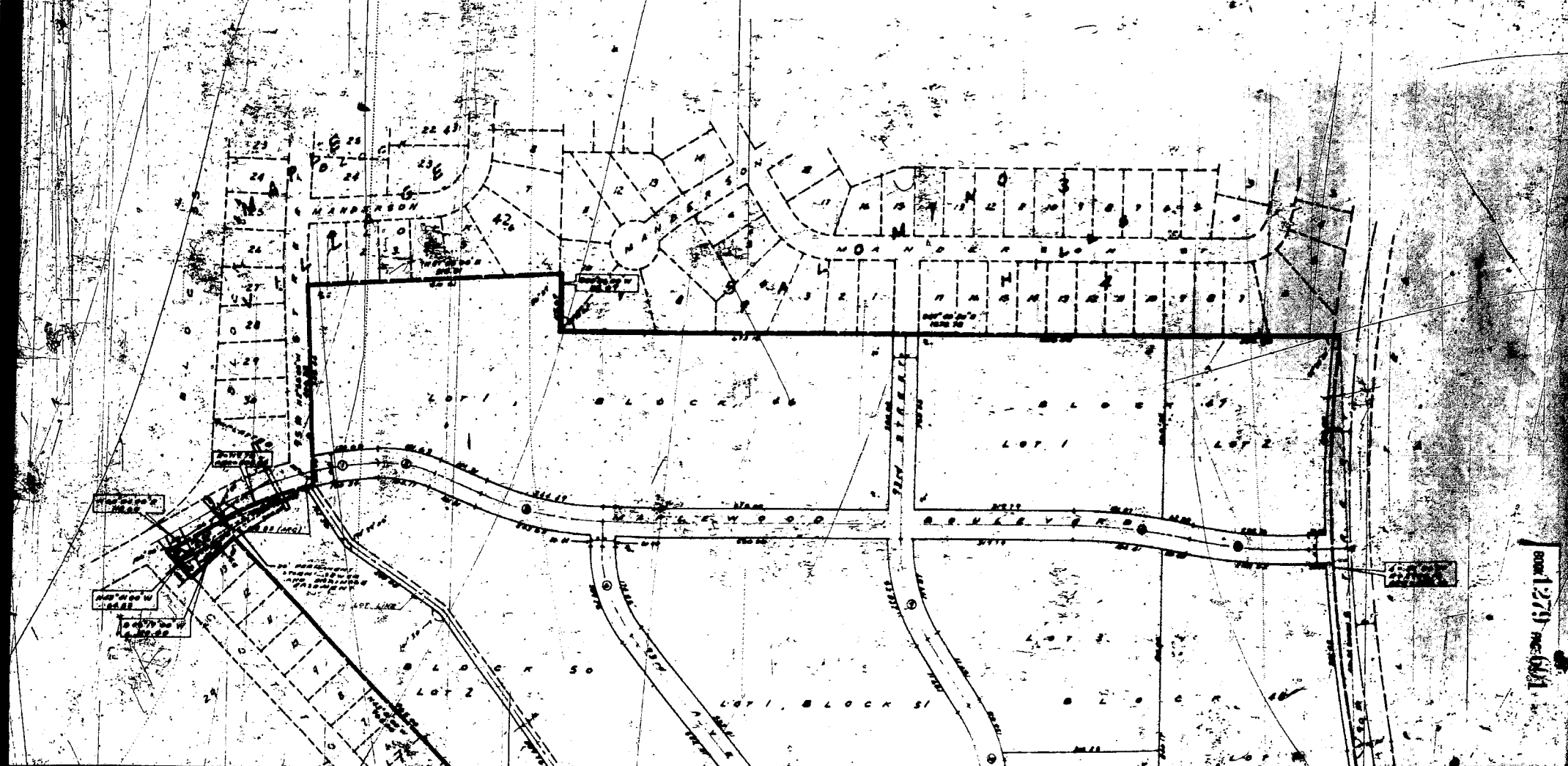


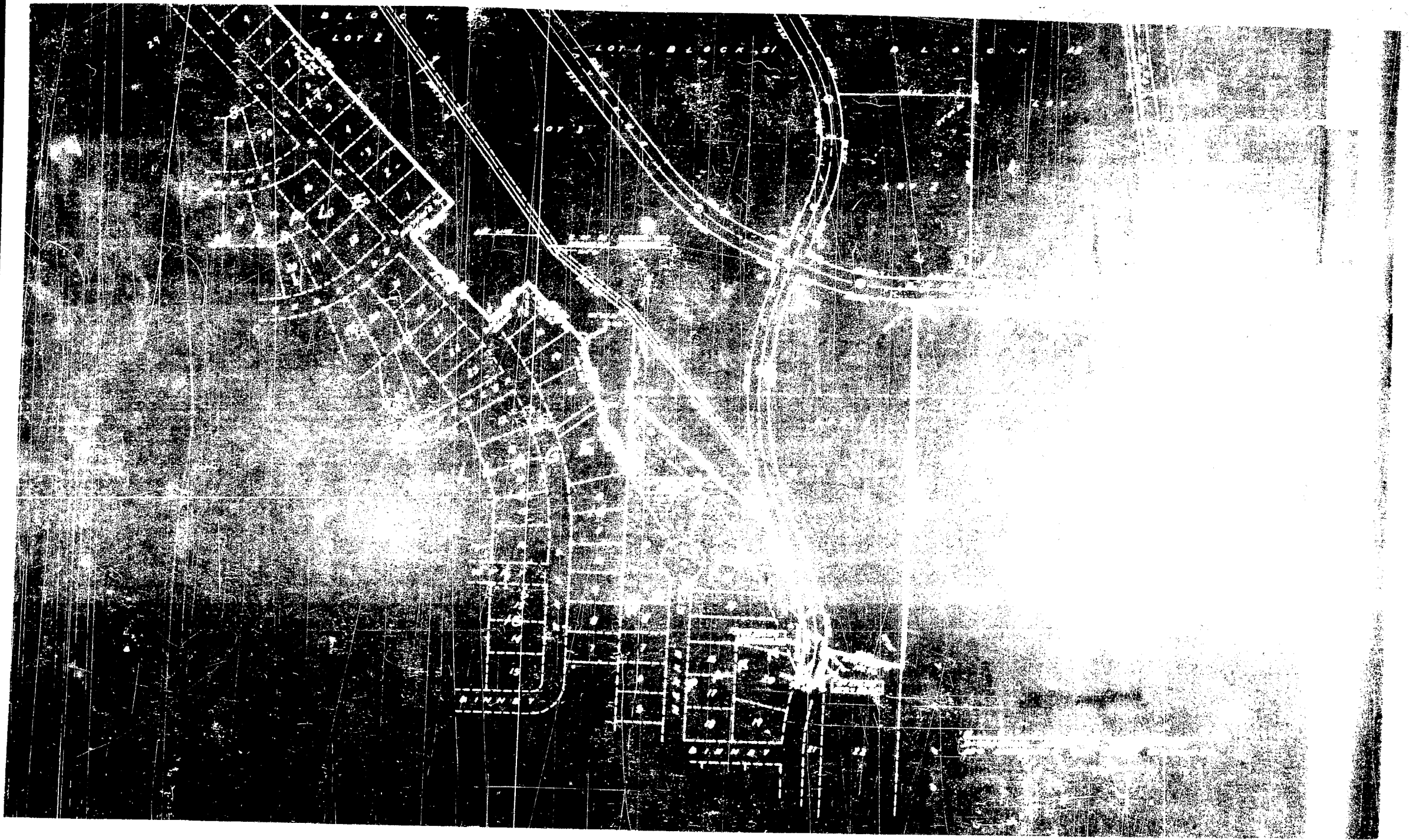
MAPLE VILLAGE

LOT 1, BLOCK 48; LOTS 1 AND 2, BLOCK 47; LOTS 1, 2 AND 3, BLOCK 46; LOT 1, BLOCK 45; LOTS 1, 2 AND 3, BLOCK 50; LOT 1, BLOCK 51.

BEING A PLATTING OF PART OF THE SW 1/4 OF THE SW 1/4 OF SECTION 3, PART OF THE NW 1/4 OF SECTION 10, ALL OF VACATED 93RD STREET, ALL OF VACATED 93RD AVENUE, AND A REPLATTING OF LOTS 23 AND 24, MENARD PARK, AS SURVEYED, PLATTED AND RECORDED, ALL PROPERTY LYING IN T12N, R12E OF THE 6th PM, DOUGLASS COUNTY, NEBRASKA.



DATE 12/27/1911



APPROVAL OF CITY PLANNING BOARD

This plat of MAPLE VILLAGE (5th Platting) was approved by the City Planning Board of the City of Omaha, this day of _____, 1965.

Anna D. White
Chairman, City Planning Board

APPROVAL OF OMAHA CITY COUNCIL

This plat of MAPLE VILLAGE (5th Platting) was approved and accepted by the City Council of Omaha on this 22nd day of February, 1965.

H. J. Gentry *W. J. Gentry* *W. J. Gentry*
Mayor President

CENTERLINE CURVE DATA

Station	Angle	Distance	Radius	Chord	Offset
1.		7.6420	180.00	7.6420	0.00
2.	26° 13' 15"	22.290431	60.00	22.2904	0.00
3.	22° 57' 35"	8.95065	130.00	8.9507	0.00
4.	13° 19' 45"	5.21848	121.24	5.2185	0.00
5.	16°	4.476101	124.38	4.4761	0.00
6.	39° 25' 10"	20.525829	100.00	20.5258	0.00
7.	28° 47' 30"	9.191593	140.00	9.1916	0.00
8.	21° 30'	10.877847	100.00	10.8778	0.00
9.	32° 31' 34"	15.195093	110.00	15.1951	0.00
10.	54° 18' 55"	14.376506	100.00	14.3765	0.00
11.	41° 51' 20"	8.42734	250.00	8.4273	0.00
12.	39° 18'	22.711918	90.00	22.7119	0.00

DOUGLAS COUNTY
SURVEYOR'S OFFICE
D. L. Smith




16

ENTERED IN NUMERICAL INDEX AND RECORDED IN THE REGISTER OF DEEDS OFFICE IN DOUGLAS COUNTY, NEBRASKA
2 DAY *March* 1965
THOMAS J. O'CONNOR, REGISTER OF DEEDS