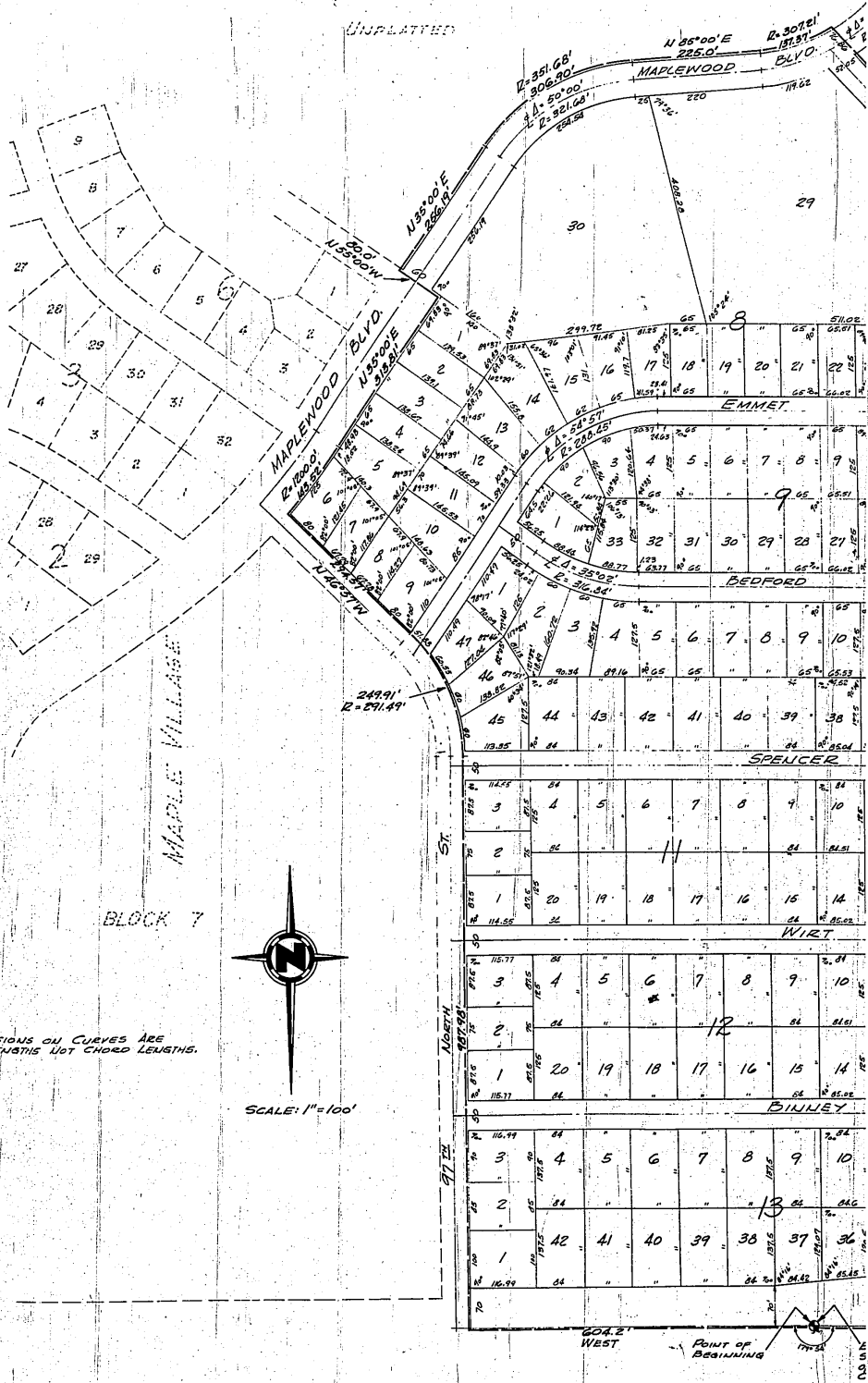


MAPLE VILL

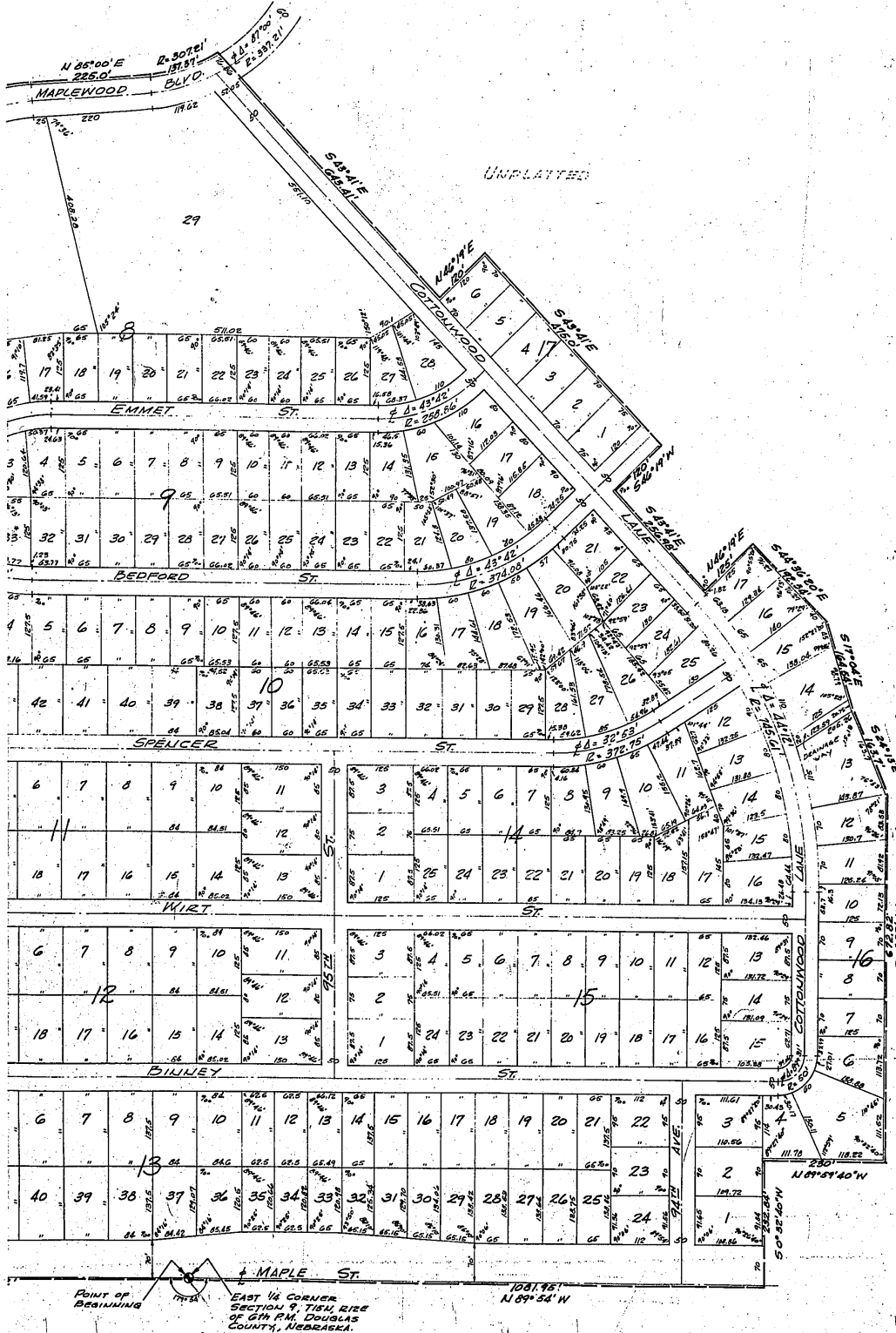
BLOCKS 8, 9, 10, 11, 12, 13, 14, 15, 16 AND
A PLATTING OF PART OF THE NE 1/4 SECTION 9,
NW 1/4 SECTION 10, ALL IN T15N, R12E OF THE 6TH P.
COUNTY, NEBRASKA.



VILLAGE

BOOK 1086 PAGE 547

10, 11, 12, 13, 14, 15, 16 AND 17
THE NE 1/4 SECTION 9 AND PART OF THE
T15N, R12E OF THE 6TH P.M. DOUGLAS



UNPLATTED

Know all men by these presents:

That N. P. Dodge Corporation, a Delaware Corporation with authority to do business in the State of Nebraska, being the sole owner and proprietor of the land described within the Surveyor's Certificate and embraced within this plat has caused the same to be subdivided into lots, blocks and streets, said Subdivision to be hereafter known as MAPLE VILLAGE, the lots and blocks numbered as shown, and it hereby ratifies and approves of the disposition of its property as shown on this plat and it hereby dedicates to the public for public use the streets as shown herein.

N. P. Dodge Corporation

By R. H. Abernathy, Jr. Vice President

R. H. Abernathy, Jr.

Attest Elizabeth C. Dillon Secretary
Elizabeth C. Dillon

ACKNOWLEDGEMENT OF NOTARY

State of Nebraska)

) SS

County of Douglas)

On this 23 day of February, 1960 before me, a Notary Public, duly commissioned and qualified in and for said County, appeared R. H. Abernathy, Jr. and Elizabeth C. Dillon who are personally known to me to be respectively the Vice President and Secretary of the N. P. Dodge Corporation, a Delaware Corporation, being the sole owner and proprietor of the property described in the Surveyor's Certificate on this plat and they did acknowledge their execution of the foregoing dedication to be their voluntary act and deed as such officers and the voluntary act and deed of said corporation.

Alfred J. Simonsen
Notary Public

My commission expires on the 9 day of June, 1960.

DEDICATION

Louise E. Everett, widow and single, mortgagee of the land described within the Surveyor's Certificate and embraced within this plat, ratifies and approves the platting of the property to be hereafter known as MAPLE VILLAGE and releases the streets within the plat from the lien of said mortgage.

Louise E. Everett
Louise E. Everett

ACKNOWLEDGEMENT OF NOTARY

State of Nebraska)

) SS

County of Douglas)

On this 23rd day of February, 1960, before me, a Notary Public, duly commissioned and qualified in and for said County, appeared Louise E. Everett, widow and single who is personally known to me to be the identical person whose name appears on the foregoing Dedication as the mortgagee of the land described within the Surveyor's Certificate and embraced within this plat, and she acknowledges her execution of the foregoing dedication to be her voluntary act and deed.

Harvey D. Davis
Notary Public

My commission expires on the 2nd day of April, 1960.

COUNTY TREASURER'S CERTIFICATE

This is to certify that I find no regular or special taxes, due or delinquent against the property described in the Surveyor's Certificate and embraced in this plat as shown by the records of this office, this 24 day of March, 1960.

Sam J. Howell
Douglas County Treasurer

C. H. Remington
Deputy

APPROVAL OF OMAHA CITY COUNCIL

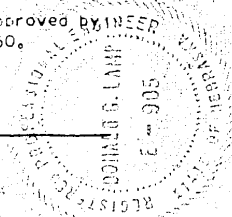
This plat of Maple Village was approved and accepted by the City Council of Omaha on the 12 day of April, 1960.

Mary J. Gallagher Deputy City Clerk
W. P. Jensen President
John R. Ruppel Mayor

ACKNOWLEDGEMENT OF GRADING

I hereby certify that the streets within this plat are built to the grades approved by the City Engineer and filed with the City, this 23 day of Feb., 1960.

Donald B. Lamp
 Engineer Number E-905



APPROVAL OF CITY ENGINEER

I hereby approve the plat of MAPLE VILLAGE on this 14th day of March, 1960.

D. P. DeBord
 City Engineer

APPROVAL OF CITY PLANNING BOARD

This plat of MAPLE VILLAGE was approved by the City Planning Board of the City of Omaha this 16 day of MARCH, 1960.

J. H. Schroeder
 VICE Chairman of City Planning Board

Surveyors Certificate

I hereby certify that I have accurately surveyed and staked with iron pipe all corners of all lots, Streets, angle points and ends of all curves in MAPLE VILLAGE, Blocks 8, 9, 10, 11, 12, 13, 14, 15, 16, and 17, being a platting of part of the NE $\frac{1}{4}$ of Section 9 and part of NW $\frac{1}{4}$ of Section 10, all in T 15 N, R 12 E of the 6th P. M., Douglas County, Nebraska to wit: (South line of said NE $\frac{1}{4}$ of Section 9 assumed East-West in direction.)

Beginning at the East $\frac{1}{4}$ corner of said Section 9, thence due West along the centerline of Maple Street a distance of 604.2 feet to the East line of 97th Street; thence due North on the East line of 97th Street, a distance of 987.98 feet to a point of curve, then on the Easterly line of 97th Street on a curve to the left (Radius being 291.49 feet) a distance of 249.91 feet; thence N46° 57' W on the Easterly line of 97th Street a distance of 294.57 feet to a point on the Southerly Line of Maplewood Blvd.; thence Northeasterly on the Southerly Line of Maplewood Blvd., on a curve to the left. (Radius being 1200.0 feet) a distance of 143.52 feet; thence N 35° 00' E on Southerly line of Maplewood Blvd. a distance of 313.81 feet; thence N55° 00' W a distance of 80.0 feet to a point on the Northerly Line of Maplewood Blvd.; thence N 35° 00' E a distance of 256.19 feet; thence on a curve to the right (Radius being 351.68 feet) a distance of 306.9 feet; thence N 85° 00' E a distance of 225.0 feet to a point of curve; thence on a curve to the left (Radius being 307.21 feet) a distance of 137.37 feet; thence S 43° 41' E a distance of 643.41 feet; thence N 46° 19' E a distance of 120 feet; thence S 43° 41' E a distance of 475.0 feet; thence S 46° 19' W a distance of 120 feet; thence S 43° 41' E a distance of 256.98 feet; thence N 46° 19' E a distance of 125.0 feet; thence S 44° 36' 20" E a distance of 192.54 feet; thence S 17° 04' E a distance of 164.54 feet; thence S 24° 13' E a distance of 163.7 feet; thence S 0° 33' W a distance of 672.82 feet; thence N 89° 59' 40" W a distance of 230 feet; thence S 0° 32' 40" W a distance of 232.84 feet; thence N 89° 54' W along the centerline of Maple Street a distance of 1081.95 feet to the point of beginning.

LAMP, RYNEARSON & ASSOC., INC.

24th February, 1960
 Date

Ivan O. Rold
 Land Surveyor No. 99

