

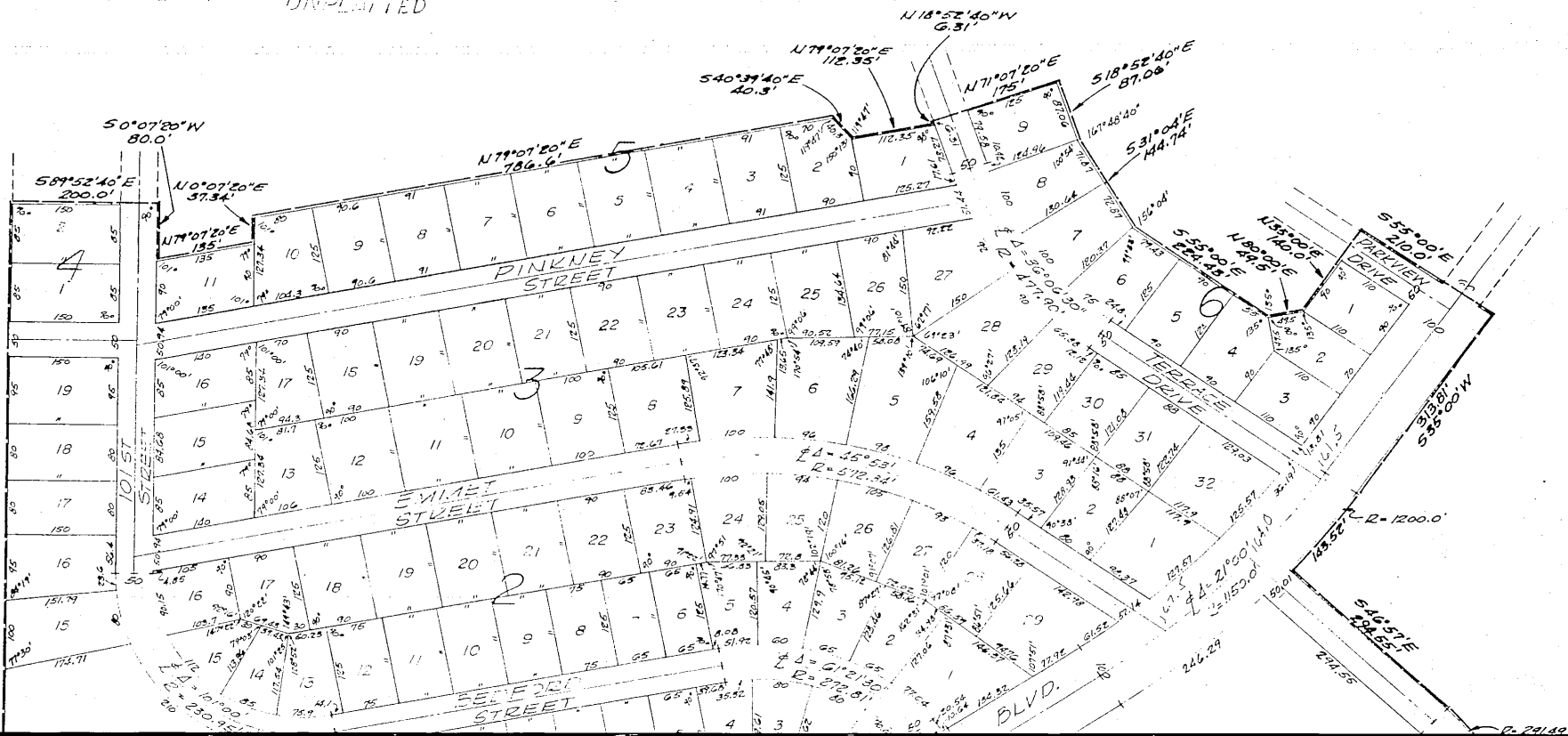
MAPLE VILLAGE

BLOCKS 1, 2, 3, LOTS 1 AND 2 BLOCK 4, LOTS 1 THRU 11 INCLUSIVE IN BLOCK 5, LOTS 1 THRU 9 INCLUSIVE IN BLOCK 6, AND ALL OF BLOCK 7. A PLATTING OF PART OF THE NE $\frac{1}{4}$ SECTION 9, T15N, R12E, OF 6TH P.M., DOUGLAS COUNTY, NEBRASKA.

BOOK 1077 PAGE 704

UNPLATTED

UNPLATTED

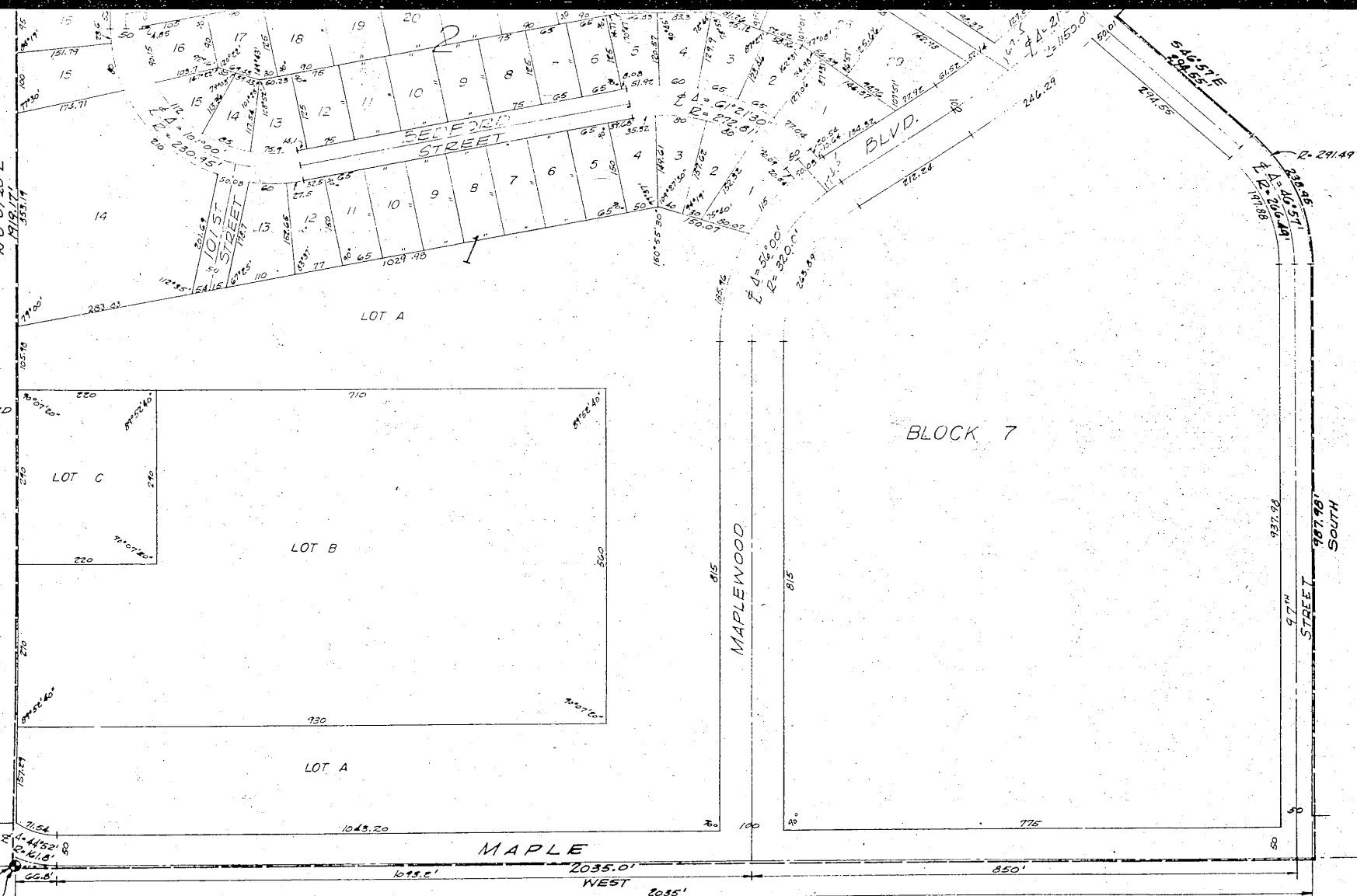




SCALE: 1"=100'

NOTE:
DIMENSIONS ON
CURVES ARE ARC
LENGTHS NOT CHORD
LENGTHS.

POINT OF BEGINNING
CENTER SEC. 9, T15N,
R12E OF 6TH P.M.
DOUGLAS COUNTY NEBRASKA



UNPLATTED

UNPLATTED

SURVEYOR'S CERTIFICATE

I hereby certify that I have accurately surveyed and staked with iron pipe, all corners of all lots, streets, angle points and ends of all curves in MAPLE VILLAGE, Blocks 1, 2, 3, lots land 2 Block 4, lots 1 thru 11 inclusive in Block 5, lots thru 9 inclusive in Block 6 and all of Block 7, being a platting of part of the NE $\frac{1}{4}$ of Section 9, T15 N, R12 E, 6th P. M., Douglas County, Nebraska to wit: (Centerline of Maple Street assumed East-West in direction) Beginning at the center of above said Section 9, thence N 0° 7' 20" E, 1919.17 feet; thence S 39° 52' 40" E, 200 feet; thence S 0° 07' 20" W, 80 feet; thence N 79° 07' 20" E, 135 feet; thence N 0° 07' 20" E, 37.34 feet; thence N 79° 07' 20" E, 786.6 feet; thence S 40° 39' 40" E, 40.3 feet; thence N 79° 07' 20" E, 112.35 feet; thence N 18° 52' 40" W, 6.31 feet; thence N 71° 07' 20" E, 175 feet; thence S 18° 52' 40" E, 87.06 feet; thence S 31° 04' E, 144.74 feet; thence S 55° 00' E, 224.43 feet; thence N 80° 00' E, 49.5 feet; thence N 35° 00' E, 140.0 feet; thence S 55° 00' E, 210 feet; thence S 35° 00' W, 313.81 feet; thence on a curve to the right (radius being 1200.0 feet) a curve distance of 143.52 feet; thence S 46° 57' E, 294.55 feet; thence on a curve to the right (radius being 291.49 feet) a curve distance of 239.95 feet; thence due South 987.95 feet to the center line of Maple Street; thence due West 2035.0 feet along the center line of Maple Street to the point of beginning.

Lamp, Rynearson & Associates, Inc.

William L. Rynearson
William L. Rynearson, Land Surveyor No. 63

Date 17 Oct 1959COUNTY TREASURER'S CERTIFICATE

This is to certify that I find no regular or special taxes, due or delinquent against the property described in the Surveyor's Certificate and embraced in this plat as shown by the records of this office, this 17th day of October, 1959.

Sam J. Howell
Douglas County Treasurer

C. H. Rynearson
Deputy

APPROVAL OF OMAHA CITY COUNCIL

This plat of Maple Village was approved and accepted by the City Council of the City of Omaha on the ____ day of _____, 1959.

City Clerk_____
President_____
MayorACKNOWLEDGEMENT OF GRADING

I hereby certify that the streets within this plat are built to the grades approved by the City Engineer and filed with the City, this 17th day of October, 1959.

Donald B. Lang
Engineer Number E-905

APPROVAL OF CITY ENGINEER

I hereby approve the plat of MAPLE VILLAGE on this 20 day of October, 1959.

D. P. McLeod
City Engineer

APPROVAL OF CITY PLANNING BOARD

This plat of MAPLE VILLAGE was approved by the City Planning Board of the City of Omaha this 21 day of OCTOBER, 1959.

H. W. Ahrens
Chairman of City Planning Board

DEDICATION

Know all men by these presents:

That N. P. Dodge Company, a Nebraska Corporation, being the sole owner and proprietor of the land described within the Surveyor's Certificate and embraced within this plat has caused the same to be subdivided into lots, blocks and streets, said Subdivision to be hereafter known as MAPLE VILLAGE, the lots and blocks numbered as shown and it hereby ratifies and approves of the disposition of its property as shown on this plat and it hereby dedicates to the public for public use the streets as shown herein.

N. P. Dodge Company

By R. H. Abernathy, Jr. Vice President
R. H. Abernathy, Jr.

Attest Wm. C. Ramsey Secretary
Wm. C. Ramsey

ACKNOWLEDGEMENT OF NOTARY

State of Nebraska)
) ss
County of Douglas)

On this 19th day of October, 1959 before me, a Notary Public, duly commissioned and qualified in and for said County, appeared R. H. Abernathy, Jr. and Wm. C. Ramsey, who are personally known to me to be respectively the Vice President and Secretary of the N. P. Dodge Company, a Nebraska Corporation, being the sole owner and proprietor of the property described in the Surveyor's Certificate on this plat and they did acknowledge their execution of the foregoing dedication to be their voluntary act and deed as such officers and the voluntary act and deed of said Corporation.

Robert Sutton
Notary Public

My commission expires on the 2nd day of October, 1960.

DEDICATION

Louise E. Everett, widow and single, mortgages of the land described within the Surveyor's Certificate and embraced within this plat, ratifies and approves the platting of the property to be hereafter know as MAPLE VILLAGE and releases the streets within the plat from the lien of said mortgage

Louise E. Everett
Louise E. Everett

ACKNOWLEDGEMENTS

State of Nebraska)
County of Douglas) ss

On this 5th day of April, 1959, before me, a notary Public, duly commissioned and qualified in and for said County personally came Louise E. Everett, being the mortgagee and acknowledged the execution of the foregoing dedication to be her voluntary act and deed.

Harvey D. Davis
Notary Public

MY Commission expires on the 2nd day of April, 1960