



MISC 2004021038



FEB 18 2004 10:29 P 3

Received - RICHARD TAKECHI
Register of Deeds, Douglas County, NE
2/18/2004 10:29:15 AM



2004021038

SANITARY AND IMPROVEMENT DISTRICT STATEMENT
DOUGLAS COUNTY, NEBRASKA

STATE OF NEBRASKA)
) ss.
COUNTY OF DOUGLAS)

1550 01.60000
FEE _____ FB _____
BKP *9.15.11* _____ COMP _____
DEL _____ SCAN _____ FV _____
F Mux 3/1

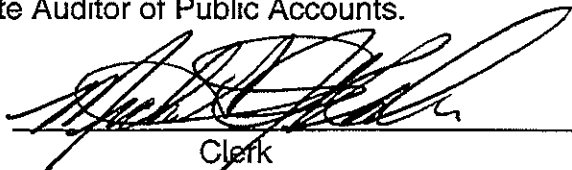
Michael J. Kahre, being first duly sworn, states that he is the Clerk of Sanitary and Improvement District No. 495 of Douglas County, Nebraska and makes the following statement regarding it:

1. District Number: 495
2. Outer Boundaries: See Exhibit "A" attached hereto and by this reference made a part hereof.
3. The purpose of this District shall be acquiring, installing, repairing, maintaining, renewing, operating and replacing electrical service lines and conduits, a sewer system, a water system, a system of sidewalks, public roads, streets and highways, a civil defense warning system, to contract for water for fire protection and for resale to the residents of the District, and to contract for gas and electricity, for street lighting for the public streets and highways within the District and to acquire, improve and operate public parks, playgrounds and recreational facilities. The District shall have all of the powers and authorities as are permitted by law, to achieve the purposes herein above set forth, including but not in limitation of the foregoing, the power and authority to contract with corporations, utility companies, or municipalities for water for fire protection and for resale to the residents of the District, and for electricity and gas, for street lighting of the public streets and highways within the District and for the disposal of sewage in the use of existing sewer improvement facilities and for the operation and maintenance of electrical service lines and conduits.
4. The District has the power to levy and unlimited property tax to pay its debts and expenses of operation and maintenance.

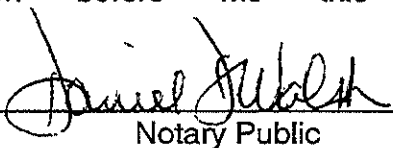
After recording, please return original to:
WALSH LAW, P.C.
13304 W. CENTER RD., STE. 222
OMAHA, NE 68144-3456

✓ 5218

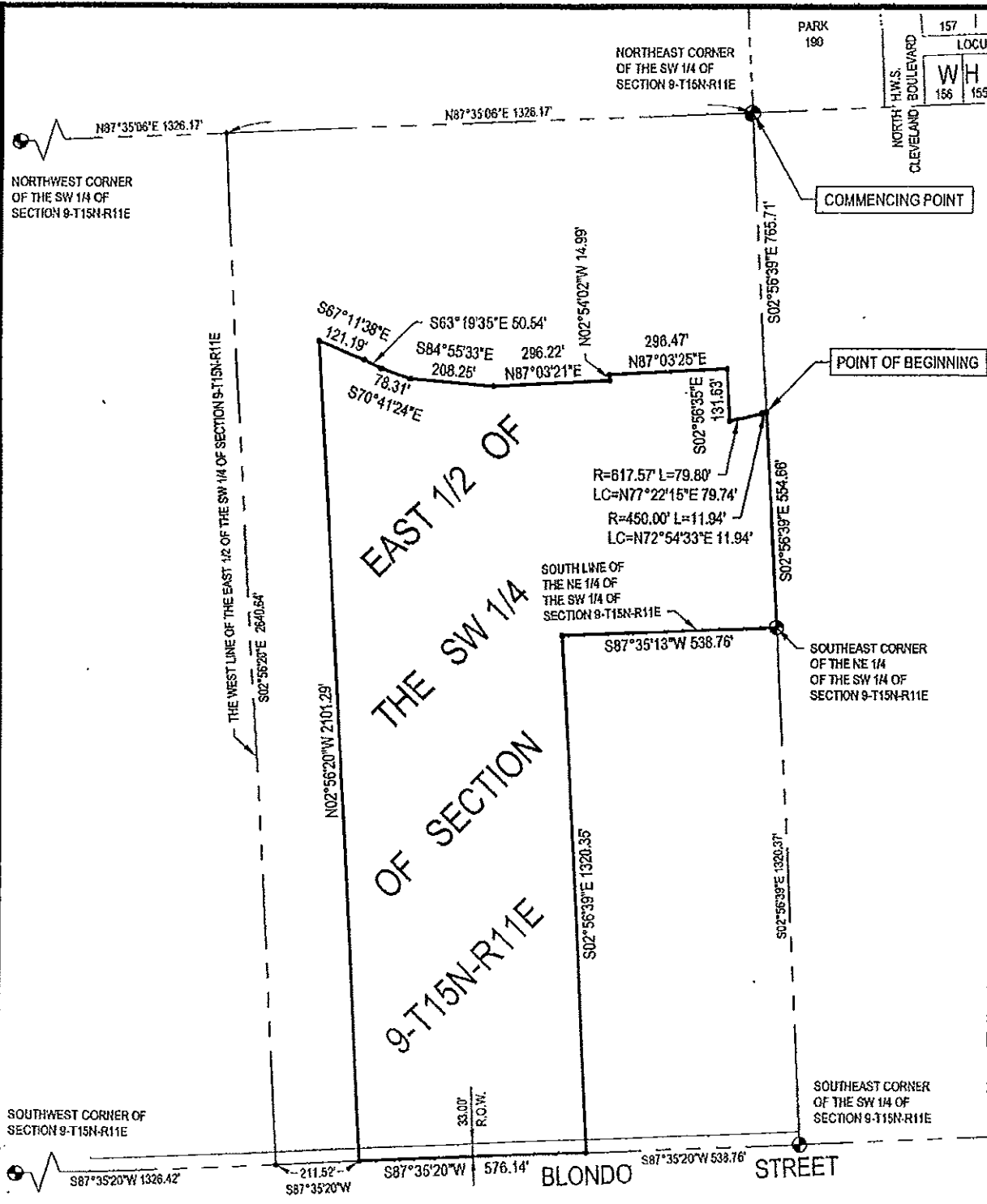
5. The District is required by statute to levy special assessments on property in the District to the full extent of special benefits arising by reason of improvements installed by it.
6. In all years when a budget is required by law, the District's annual budget is filed with the County Clerk, which budget shows anticipated revenue and expenses, levy, and indebtedness of the District.
7. The actual current levy of the District may be obtained from the County Clerk.
8. A copy of the District's annual financial audit is on file with the Clerk of the District and the State Auditor of Public Accounts.


Clerk

SUBSCRIBED and sworn before me this 10th day of November, 2003.


Notary Public





LEGAL DESCRIPTION

**DISTRICT BOUNDARY
DOUGLAS COUNTY S. & I. D. No. 495**

A tract of land located in the East 1/2 of the SW 1/4 of Section 9, Township 15 North, Range 11 East of the 6th P.M., Douglas County, Nebraska, more particularly described as follows:

Commencing at the Northeast corner of said SW 1/4 of Section 9, said point also being the Southwest corner of Lot 190, Whispering Ridge, a subdivision located in the NE 1/4 of said Section 9; thence S02°56'39"E (assumed bearing) along the East line of said SW 1/4 of Section 9, a distance of 765.71 feet to the point of beginning; thence continuing S02°56'39"E along said East line of the SW 1/4 of Section 9, a distance of 554.66 feet to the Southeast corner of the NE 1/4 of said SW 1/4 of Section 9; thence S87°35'13"W along the South line of said NE 1/4 of the SW 1/4 of Section 9, a distance of 538.76 feet; thence S02°56'39"E, a distance of 1320.35 feet to a point on the South line of said SW 1/4 of Section 9; thence S87°35'20"W along said South line of the SW 1/4 of Section 9, a distance of 576.14 feet; thence N02°56'20"W, a distance of 2101.29 feet; thence S67°11'38"E, a distance of 121.19 feet; thence S63°19'35"E, a distance of 50.54 feet; thence S70°41'24"E, a distance of 78.31 feet; thence S84°55'33"E, a distance of 208.25 feet; thence N87°03'21"E, a distance of 296.22 feet; thence N02°54'02"W, a distance of 14.99 feet; thence N87°03'25"E, a distance of 296.47 feet; thence S02°56'35"E, a distance of 131.63 feet; thence Northeasterly on a curve to the left with a radius of 617.57 feet, a distance of 79.80 feet, said curve having a long chord which bears N77°22'15"E, a distance of 79.74 feet; thence Northeasterly on a curve to the left with a radius of 450.00 feet, a distance of 11.94 feet, said curve having a long chord which bears N72°54'33"E, a distance of 11.94 feet to the point of beginning.

Said tract of land contains an area of 1,500,785 square feet or 34.453 acres, more or less.

E&A CONSULTING GROUP, INC.
ENGINEERS • PLANNERS • SURVEYORS



1201 O STREET
OMAHA, NE 68137
PHONE: (402) 895-1700
FAX: (402) 895-3559

7130 SOUTH 25TH STREET, SUITE D
LINCOLN, NE 68516-5841
PHONE: (402) 420-7217
FAX: (402) 420-7218

**DISTRICT BOUNDARY
DOUGLAS COUNTY
S. & I. D. NO. 495**

Drawn By: J.A.F.
Chkd by: _____
Date: _____
Chkd by: _____
Date: _____

Proj: 2003099.01
Date: 10/01/2003
Scale: 1" = 300'
Sheet No: 1 of 1

Exhibit "A"