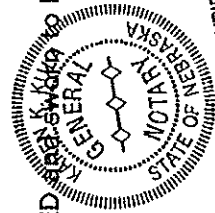




8. A copy of the District's annual financial audit is on file with the Clerk of the District and the State Auditor of Public Accounts.

*M. A. Boye*  
CLERK

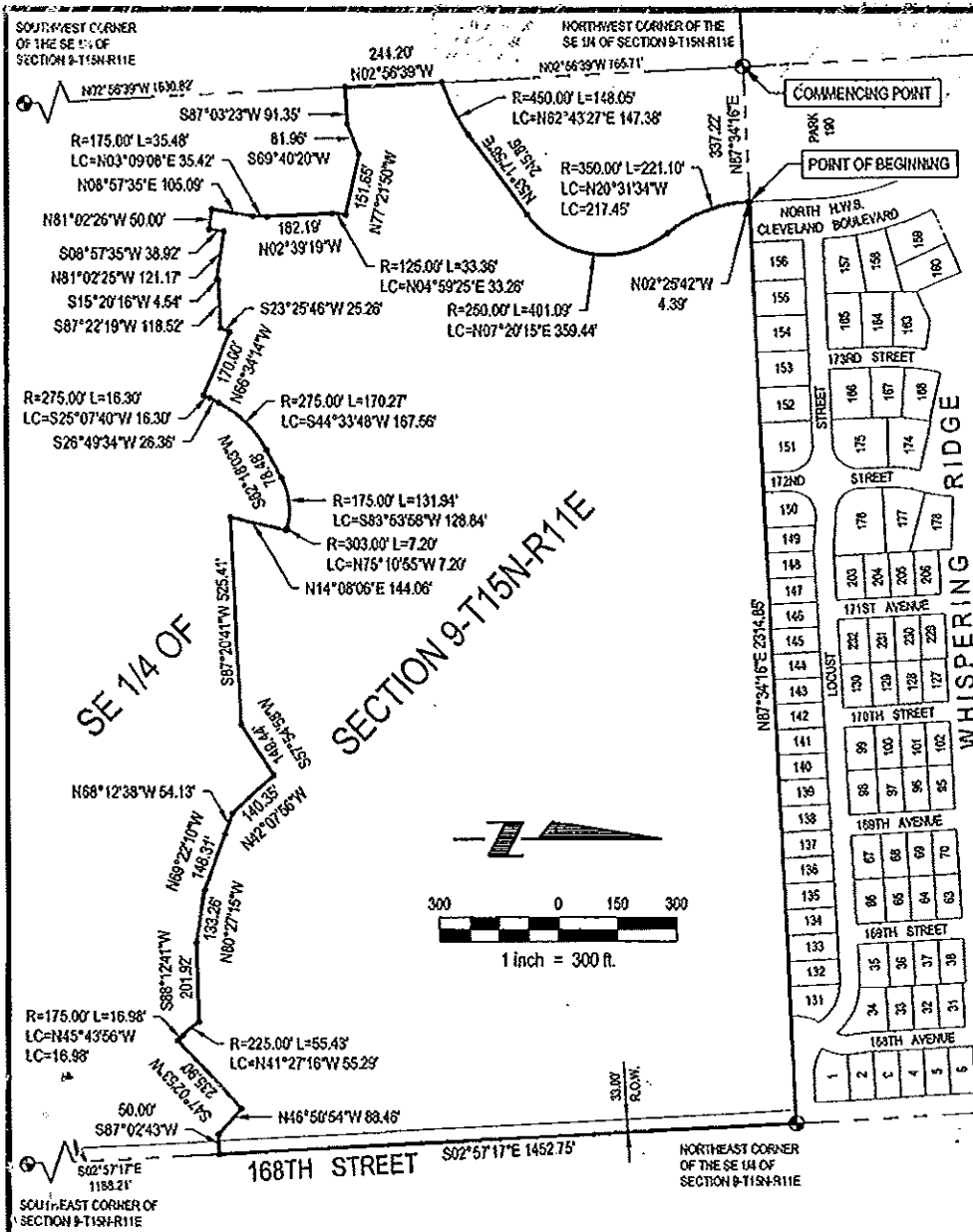
SUBSCRIBED *[Signature]* before me this 10<sup>th</sup> day of Oct., 2003



*[Signature]*  
Notary Public

MY COMMISSION EXPIRES  
JULY 26, 2005

9-15-11



**LEGAL DESCRIPTION**  
**DISTRICT BOUNDARY**  
**DOUGLAS COUNTY S. & I. D. No. 493**

A tract of land located in the SE 1/4 of Section 9, Township 15 North, Range 11 East of the 6th P.M., Douglas County, Nebraska, more particularly described as follows:

Commencing at the Northwest corner of said SE 1/4 of Section 9, said point also being the Southwest corner of Lot 190, Whispering Ridge, a subdivision located in the NE 1/4 of said Section 9; thence N87°34'16"E (assumed bearing) along the North line of said SE 1/4 of Section 9, said line also being the South line of said Lot 190, Whispering Ridge, a distance of 337.22 feet to the Southeast corner of said Lot 190, Whispering Ridge, said point also being on the Westerly right-of-way line of North H.W.S. Cleveland Boulevard, said point also being the point of beginning; thence continuing N87°34'16"E along said North line of the SE 1/4 of Section 9, said line also being the South line of said Whispering Ridge and the Easterly extension thereof, a distance of 2314.85 feet to the Northeast corner of said SE 1/4 of Section 9; thence S02°57'17"E along the East line of said SE 1/4 of Section 9, a distance of 1452.75 feet; thence S87°02'43"W, a distance of 50.00 feet; thence N46°50'54"W, a distance of 88.46 feet; thence S47°02'53"W, a distance of 235.90 feet; thence Northwest on a curve to the left with a radius of 175.00 feet, a distance of 16.98 feet, said curve having a long chord which bears N45°43'56"W, a distance of 16.98 feet; thence Northwest on a curve to the right with a radius of 225.00 feet, a distance of 55.43 feet, said curve having a long chord which bears N41°27'18"W, a distance of 55.29 feet; thence S88°12'41"W, a distance of 201.92 feet; thence N80°27'15"W, a distance of 133.26 feet; thence N69°22'10"W, a distance of 148.31 feet; thence N68°12'38"W, a distance of 54.13 feet; thence N42°07'56"W, a distance of 140.35 feet; thence S67°54'58"W, a distance of 149.44 feet; thence S87°20'41"W, a distance of 525.41 feet; thence N14°08'06"E, a distance of 144.06 feet; thence Northwest on a curve to the right with a radius of 303.00 feet, a distance of 7.20 feet, said curve having a long chord which bears N75°10'55"W, a distance of 7.20 feet; thence Southwest on a curve to the left with a radius of 175.00 feet, a distance of 131.94 feet, said curve having a long chord which bears S83°53'58"W, a distance of 128.84 feet; thence S62°18'03"W, a distance of 78.46 feet; thence Southwest on a curve to the left with a radius of 275.00 feet, a distance of 170.27 feet, said curve having a long chord which bears S44°33'48"W, a distance of 167.56 feet; thence S26°49'34"W, a distance of 26.36 feet; thence Southwest on a curve to the left with a radius of 275.00 feet, a distance of 16.30 feet, said curve having a long chord which bears S25°07'40"W, a distance of 16.30 feet; thence N66°34'14"W, a distance of 170.00 feet; thence S23°25'46"W, a distance of 25.26 feet; thence S87°22'19"W, a distance of 118.52 feet; thence S15°20'16"W, a distance of 4.54 feet; thence N81°02'25"W, a distance of 121.17 feet; thence S08°57'35"W, a distance of 38.92 feet; thence N81°02'26"W, a distance of 50.00 feet; thence N08°57'35"E, a distance of 105.09 feet; thence Northerly on a curve to the left with a radius of 175.00 feet, a distance of 35.48 feet, said curve having a long chord which bears N03°09'08"E, a distance of 35.42 feet; thence N02°39'19"W, a distance of 162.19 feet; thence Northerly on a curve to the right with a radius of 125.00 feet, a distance of 33.36 feet, said curve having a long chord which bears N04°59'25"E, a distance of 33.26 feet; thence N77°21'50"W, a distance of 151.65 feet; thence S69°40'20"W, a distance of 81.98 feet; thence S87°03'23"W, a distance of 91.35 feet to a point on the West line of said SE 1/4 of Section 9; thence N02°56'39"W along said West line of the SE 1/4 of Section 9, a distance of 244.20 feet; thence Northeasterly on a curve to the left with a radius of 450.00 feet, a distance of 148.05 feet, said curve having a long chord which bears N62°43'27"E, a distance of 147.38 feet; thence N53°17'56"E, a distance of 245.86 feet; thence Northwest on a curve to the left with a radius of 250.00 feet, a distance of 401.09 feet, said curve having a long chord which bears N07°20'15"E, a distance of 359.44 feet; thence Northerly on a curve to the right with a radius of 350.00 feet, a distance of 221.10 feet, said curve having a long chord which bears N20°31'34"W, a distance of 217.45 feet; thence N02°25'42"W, a distance of 4.39 feet to the point of beginning.

Said tract of land contains an area of 3,263,424 square feet or 74.918 acres, more or less.

**E&A CONSULTING GROUP, INC.**  
 ENGINEERS • PLANNERS • SURVEYORS

**DISTRICT BOUNDARY**  
**DOUGLAS COUNTY**  
**S. & I. D. NO. 493**

Drawn By: J.A.F.  
 Date: 9/22/2003

Checked by: \_\_\_\_\_  
 Date: \_\_\_\_\_

Scale: 1" = 300'

Sheet No: 1 of 1

7130 SOUTH 28TH STREET, SUITE D  
 LINCOLN, NE 68516-8441  
 PHONE: (402) 421-7170  
 FAX: (402) 421-7172

Exhibit "A"

Revised 01/07/2003

Project: 2003089.01

Date: 9/22/2003

Scale: 1" = 300'

Sheet No: 1 of 1

C:\projects\2003089\9035\y\east15rd-493-000.dwg, 3:00-4:02, 10/01/03 01:23:52 PM, JAm6f

## SID #496 BOUNDARY

A TRACT OF LAND LOCATED IN THE SOUTHEAST QUARTER OF SECTION 9, TOWNSHIP 15 NORTH, RANGE 11 EAST OF THE 6TH P.M., DOUGLAS COUNTY, NEBRASKA AND BEING MORE PARTICULARLY DESCRIBED AS FOLLOWS:

BEGINNING AT THE SOUTHWEST CORNER OF SAID SOUTHEAST QUARTER; THENCE N02°35'01"W ALONG THE WEST LINE OF SAID QUARTER, A DISTANCE OF 1,630.82 FEET; THENCE N87°25'01"E, A DISTANCE OF 91.35 FEET; THENCE N70°01'58"E, A DISTANCE OF 81.96 FEET; THENCE S77°00'12"E, A DISTANCE OF 151.65 FEET; THENCE SOUTHERLY ALONG A NON-TANGENT 125.00 FOOT RADIUS CURVE TO THE LEFT, AN ARC DISTANCE OF 33.36 FEET (CHORD BEARING S05°21'04"W, CHORD DISTANCE 33.26 FEET); THENCE S02°17'41"E, A DISTANCE OF 162.19 FEET; THENCE SOUTHERLY ALONG A 175.00 FOOT RADIUS CURVE TO THE RIGHT, AN ARC DISTANCE OF 35.48 FEET (CHORD BEARING S03°30'47"W, CHORD DISTANCE 35.42 FEET); THENCE S09°19'14"W, A DISTANCE OF 105.09 FEET; THENCE S80°40'46"E, A DISTANCE OF 50.00 FEET; THENCE N09°19'14"E, A DISTANCE OF 38.92 FEET; THENCE S80°40'46"E, A DISTANCE OF 121.17 FEET; THENCE N15°41'55"E, A DISTANCE OF 4.54 FEET; THENCE N87°43'58"E, A DISTANCE OF 118.52 FEET; THENCE N23°46'20"E, A DISTANCE OF 25.26 FEET; THENCE S66°12'36"E, A DISTANCE OF 170.00 FEET; THENCE NORTHEASTERLY ALONG A NON-TANGENT 275.00 FOOT RADIUS CURVE TO THE RIGHT, AN ARC DISTANCE OF 16.30 FEET (CHORD BEARING N25°29'18"E, CHORD DISTANCE 16.30 FEET); THENCE N27°11'12"E, A DISTANCE OF 26.36 FEET; THENCE NORTHEASTERLY ALONG A 275.00 FOOT RADIUS CURVE TO THE RIGHT, AN ARC DISTANCE OF 170.27 FEET (CHORD BEARING N44°55'27"E, CHORD DISTANCE 167.56 FEET); THENCE N62°39'41"E, A DISTANCE OF 78.48 FEET; THENCE EASTERLY ALONG A 175.00 FOOT RADIUS CURVE TO THE RIGHT, AN ARC DISTANCE OF 132.08 FEET (CHORD BEARING N84°16'58"E, CHORD DISTANCE 128.96 FEET); THENCE EASTERLY ALONG A NON-TANGENT 303.00 FOOT RADIUS CURVE TO THE RIGHT, AN ARC DISTANCE OF 7.06 FEET (CHORD BEARING S74°49'25"E, CHORD DISTANCE 7.06 FEET); THENCE S14°29'44"W, A DISTANCE OF 144.06 FEET; THENCE N87°42'19"E, A DISTANCE OF 525.41 FEET; THENCE N58°16'36"E, A DISTANCE OF 149.44 FEET; THENCE S41°46'18"E, A DISTANCE OF 140.35 FEET; THENCE S67°50'59"E, A DISTANCE OF 54.13 FEET; THENCE S69°00'32"E, A DISTANCE OF 148.31 FEET; THENCE S80°05'36"E, A DISTANCE OF 133.26 FEET; THENCE N88°34'20"E, A DISTANCE OF 201.92 FEET; THENCE SOUTHEASTERLY ALONG A NON-TANGENT 225.00 FOOT RADIUS CURVE TO THE LEFT, AN ARC DISTANCE OF 55.43 FEET (CHORD BEARING S41°05'37"E, CHORD DISTANCE 55.29 FEET); THENCE SOUTHEASTERLY ALONG A NON-TANGENT 175.01 FOOT RADIUS CURVE TO THE RIGHT, AN ARC DISTANCE OF 16.98 FEET (CHORD BEARING S45°22'17"E, CHORD DISTANCE 16.98 FEET); THENCE N47°24'31"E, A DISTANCE OF 235.90 FEET; THENCE S46°29'16"E, A DISTANCE OF 88.46 FEET; THENCE N87°24'21"E, A DISTANCE OF 50.00 FEET TO A POINT ON THE EAST LINE OF SAID SOUTHEAST QUARTER; THENCE S02°35'39"E ALONG SAID EAST LINE, A DISTANCE OF 344.77 FEET; THENCE S87°56'10"W, A DISTANCE OF 517.04 FEET; THENCE S02°35'39"E, A DISTANCE OF 843.44 FEET TO A POINT ON THE SOUTH LINE OF SAID SOUTHEAST QUARTER; THENCE S87°56'10"W ALONG SAID SOUTH LINE, A DISTANCE OF 2,135.52 FEET TO THE POINT OF BEGINNING. CONTAINING A TOTAL AREA OF 69.82 ACRES, MORE OR LESS.