



STATE OF NEBRASKA } ss.  
Douglas County }  
Entered in Numerical Index and filed  
for Record in the office of the Register of  
Deeds of said county and recorded in  
Book 978 of Deeds  
Page 214

*Thomas J. ...*  
Register of Deeds  
*A. S. ...*  
Deputy

*14/15/13* ✓ ✓  
4625

*MAENER HILL*

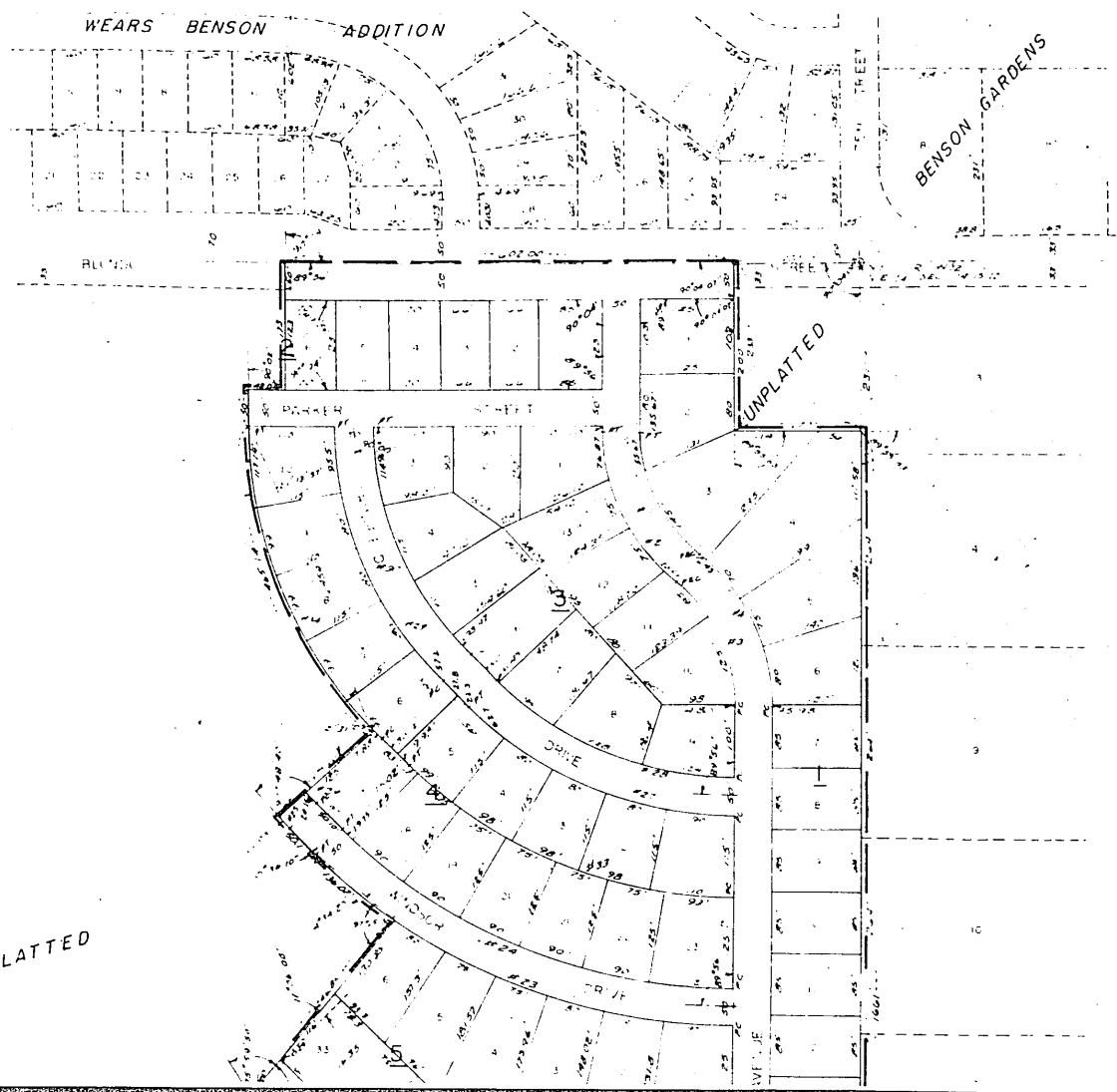
# MAENNER HILLSIDE ADDITION

(BLOCKS 1, 3, 13, 14 & 15; LOTS 1 THROUGH 6 INCL., BLOCK 2; LOTS 1 THROUGH 10, INCL. & LOTS 17 THROUGH 23 INCL., BLOCK 4; LOTS 1 THROUGH 6 INCL. & LOTS 33 THROUGH 41 INCL., BLOCK 5; LOTS 11 THROUGH 23 INCL., BLOCK 12; & LOTS 9 THROUGH 17 INCL., BLOCK 17)

A SUBDIVISION OF A PART OF THE NORTH 1/2 OF SEC. 14-15-12 ALL IN DOUGLAS COUNTY NEBRASKA

CURVE DATA

#1	R: 117.00	L: 117.00	D: 117.00
#2	R: 117.00	L: 117.00	D: 117.00
#3	R: 117.00	L: 117.00	D: 117.00
#4	R: 117.00	L: 117.00	D: 117.00
#5	R: 117.00	L: 117.00	D: 117.00
#6	R: 117.00	L: 117.00	D: 117.00
#7	R: 117.00	L: 117.00	D: 117.00
#8	R: 117.00	L: 117.00	D: 117.00
#9	R: 117.00	L: 117.00	D: 117.00
#10	R: 117.00	L: 117.00	D: 117.00
#11	R: 117.00	L: 117.00	D: 117.00
#12	R: 117.00	L: 117.00	D: 117.00
#13	R: 117.00	L: 117.00	D: 117.00
#14	R: 117.00	L: 117.00	D: 117.00
#15	R: 117.00	L: 117.00	D: 117.00
#16	R: 117.00	L: 117.00	D: 117.00
#17	R: 117.00	L: 117.00	D: 117.00
#18	R: 117.00	L: 117.00	D: 117.00
#19	R: 117.00	L: 117.00	D: 117.00
#20	R: 117.00	L: 117.00	D: 117.00
#21	R: 117.00	L: 117.00	D: 117.00
#22	R: 117.00	L: 117.00	D: 117.00
#23	R: 117.00	L: 117.00	D: 117.00
#24	R: 117.00	L: 117.00	D: 117.00
#25	R: 117.00	L: 117.00	D: 117.00
#26	R: 117.00	L: 117.00	D: 117.00
#27	R: 117.00	L: 117.00	D: 117.00
#28	R: 117.00	L: 117.00	D: 117.00
#29	R: 117.00	L: 117.00	D: 117.00
#30	R: 117.00	L: 117.00	D: 117.00
#31	R: 117.00	L: 117.00	D: 117.00
#32	R: 117.00	L: 117.00	D: 117.00
#33	R: 117.00	L: 117.00	D: 117.00
#34	R: 117.00	L: 117.00	D: 117.00
#35	R: 117.00	L: 117.00	D: 117.00
#36	R: 117.00	L: 117.00	D: 117.00
#37	R: 117.00	L: 117.00	D: 117.00
#38	R: 117.00	L: 117.00	D: 117.00
#39	R: 117.00	L: 117.00	D: 117.00
#40	R: 117.00	L: 117.00	D: 117.00
#41	R: 117.00	L: 117.00	D: 117.00

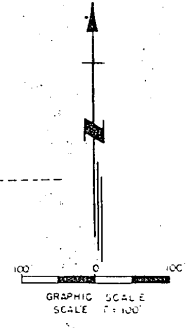
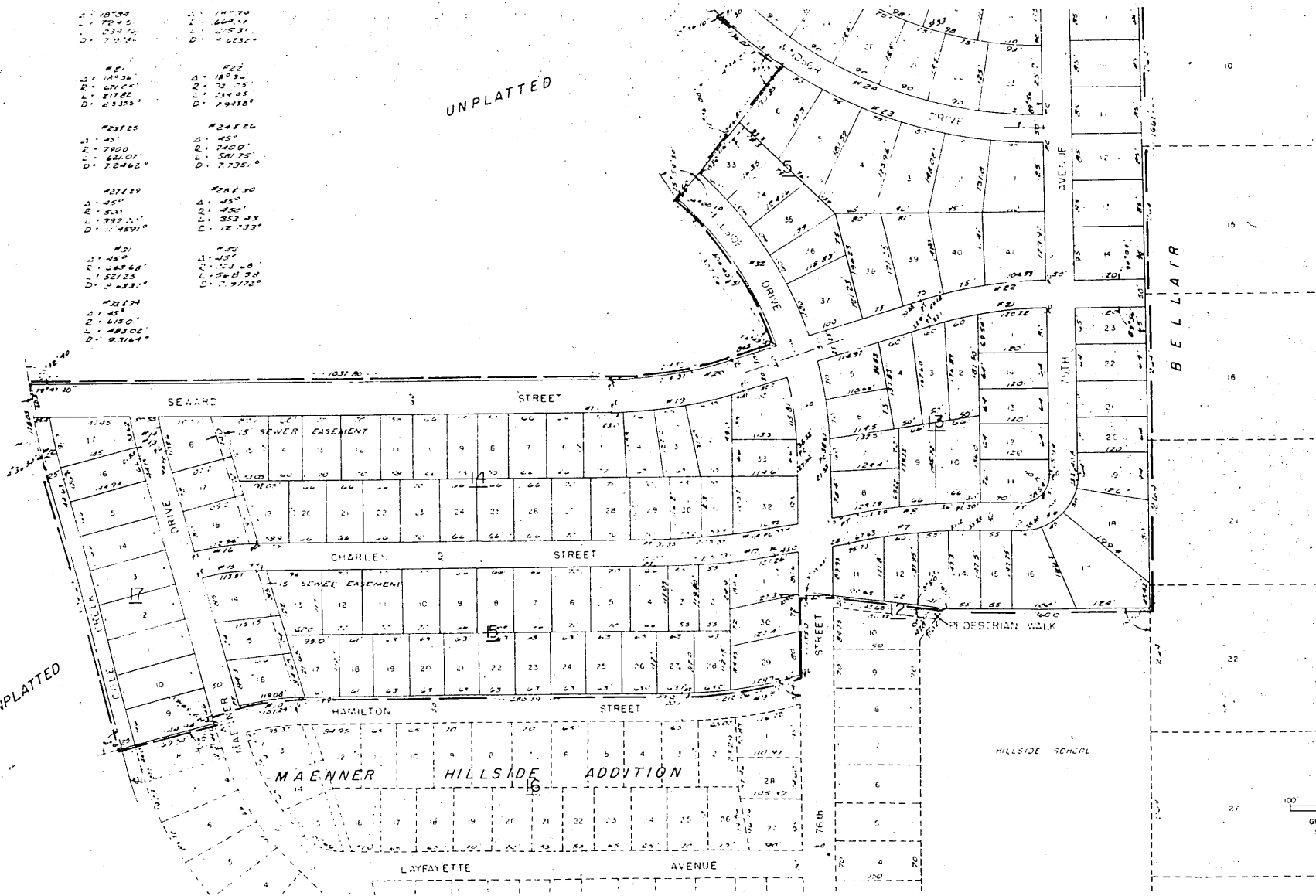


UNPLATTED

- #10738  
L: 774.5  
R: 234.76  
D: 791.94
- #11770  
L: 608.17  
R: 215.31  
D: 663.2
- #22  
L: 187.34  
R: 72.25  
D: 214.95
- #24826  
L: 581.75  
D: 7735.0
- #23725  
L: 790.0  
R: 621.01  
D: 7246.2
- #24826  
L: 790.0  
R: 621.01  
D: 7735.0
- #27129  
L: 354  
R: 992.1  
D: 1059.4
- #28230  
L: 450  
R: 353.43  
D: 1273.9
- #29  
L: 45  
R: 245.6  
D: 245.6
- #30  
L: 45  
R: 245.6  
D: 245.6
- #3124  
L: 45  
R: 415.0  
D: 483.0
- #32  
L: 45  
R: 245.6  
D: 245.6
- #33  
L: 45  
R: 245.6  
D: 245.6
- #34  
L: 45  
R: 245.6  
D: 245.6
- #35  
L: 45  
R: 245.6  
D: 245.6
- #36  
L: 45  
R: 245.6  
D: 245.6
- #37  
L: 45  
R: 245.6  
D: 245.6
- #38  
L: 45  
R: 245.6  
D: 245.6
- #39  
L: 45  
R: 245.6  
D: 245.6
- #40  
L: 45  
R: 245.6  
D: 245.6
- #41  
L: 45  
R: 245.6  
D: 245.6
- #42  
L: 45  
R: 245.6  
D: 245.6
- #43  
L: 45  
R: 245.6  
D: 245.6
- #44  
L: 45  
R: 245.6  
D: 245.6
- #45  
L: 45  
R: 245.6  
D: 245.6
- #46  
L: 45  
R: 245.6  
D: 245.6
- #47  
L: 45  
R: 245.6  
D: 245.6
- #48  
L: 45  
R: 245.6  
D: 245.6
- #49  
L: 45  
R: 245.6  
D: 245.6
- #50  
L: 45  
R: 245.6  
D: 245.6
- #51  
L: 45  
R: 245.6  
D: 245.6
- #52  
L: 45  
R: 245.6  
D: 245.6
- #53  
L: 45  
R: 245.6  
D: 245.6
- #54  
L: 45  
R: 245.6  
D: 245.6
- #55  
L: 45  
R: 245.6  
D: 245.6
- #56  
L: 45  
R: 245.6  
D: 245.6
- #57  
L: 45  
R: 245.6  
D: 245.6
- #58  
L: 45  
R: 245.6  
D: 245.6
- #59  
L: 45  
R: 245.6  
D: 245.6
- #60  
L: 45  
R: 245.6  
D: 245.6
- #61  
L: 45  
R: 245.6  
D: 245.6
- #62  
L: 45  
R: 245.6  
D: 245.6
- #63  
L: 45  
R: 245.6  
D: 245.6
- #64  
L: 45  
R: 245.6  
D: 245.6
- #65  
L: 45  
R: 245.6  
D: 245.6
- #66  
L: 45  
R: 245.6  
D: 245.6
- #67  
L: 45  
R: 245.6  
D: 245.6
- #68  
L: 45  
R: 245.6  
D: 245.6
- #69  
L: 45  
R: 245.6  
D: 245.6
- #70  
L: 45  
R: 245.6  
D: 245.6
- #71  
L: 45  
R: 245.6  
D: 245.6
- #72  
L: 45  
R: 245.6  
D: 245.6
- #73  
L: 45  
R: 245.6  
D: 245.6
- #74  
L: 45  
R: 245.6  
D: 245.6
- #75  
L: 45  
R: 245.6  
D: 245.6
- #76  
L: 45  
R: 245.6  
D: 245.6
- #77  
L: 45  
R: 245.6  
D: 245.6
- #78  
L: 45  
R: 245.6  
D: 245.6
- #79  
L: 45  
R: 245.6  
D: 245.6
- #80  
L: 45  
R: 245.6  
D: 245.6
- #81  
L: 45  
R: 245.6  
D: 245.6
- #82  
L: 45  
R: 245.6  
D: 245.6
- #83  
L: 45  
R: 245.6  
D: 245.6
- #84  
L: 45  
R: 245.6  
D: 245.6
- #85  
L: 45  
R: 245.6  
D: 245.6
- #86  
L: 45  
R: 245.6  
D: 245.6
- #87  
L: 45  
R: 245.6  
D: 245.6
- #88  
L: 45  
R: 245.6  
D: 245.6
- #89  
L: 45  
R: 245.6  
D: 245.6
- #90  
L: 45  
R: 245.6  
D: 245.6
- #91  
L: 45  
R: 245.6  
D: 245.6
- #92  
L: 45  
R: 245.6  
D: 245.6
- #93  
L: 45  
R: 245.6  
D: 245.6
- #94  
L: 45  
R: 245.6  
D: 245.6
- #95  
L: 45  
R: 245.6  
D: 245.6
- #96  
L: 45  
R: 245.6  
D: 245.6
- #97  
L: 45  
R: 245.6  
D: 245.6
- #98  
L: 45  
R: 245.6  
D: 245.6
- #99  
L: 45  
R: 245.6  
D: 245.6
- #100  
L: 45  
R: 245.6  
D: 245.6

UNPLATTED

UNPLATTED





COUNTY TREASURER'S CERTIFICATE

THIS IS TO CERTIFY THAT I FIND NO REGULAR OR SPECIAL TAXES DUE OR DELINQUENT AGAINST THE PROPERTY DESCRIBED IN THIS SURVEYORS CERTIFICATE AND EMBLASED IN THIS WAY AS SHOWN BY THE RECORDS OF THIS OFFICE ON THIS 20 DAY OF July A.D. 1955.

Handwritten signature of the County Treasurer and the printed title 'COUNTY TREASURER'.

APPROVAL OF CITY ENGINEER OF OMAHA

I HEREBY APPROVE THIS FLAT OF MAENNER HILLSIDE ADDITION ON THIS 1 DAY OF July A.D. 1955

Handwritten signature of the City Engineer and the printed title 'CITY ENGINEER'.

SURVEYORS CERTIFICATE

I HEREBY CERTIFY THAT I HAVE ACCURATELY SURVEYED AND STAKED WITH END POINTS ALL CORNERS OF ALL LOTS BLOCKS STREETS ALLEN'S COLE CREEK ANGLE POINTS ENDS OF ALL CURVES IN THIS FLAT OF BLOCKS 13 14 AND 15 LOTS 1 THROUGH 29 INCLUSIVE BLOCK 2 LOTS 1 THROUGH 10 INCLUSIVE AND LOTS 11 THROUGH 29 INCLUSIVE BLOCK 3 LOTS 1 THROUGH 6 INCLUSIVE AND LOTS 7 THROUGH 11 INCLUSIVE BLOCK 4 LOTS 1 THROUGH 11 INCLUSIVE BLOCK 5 LOTS 1 THROUGH 11 INCLUSIVE AND LOTS 12 THROUGH 15 INCLUSIVE THAT SAID FLAT IS A PART OF THE VILLAGE OF MAENNER HILLSIDE ADDITION IN DOUGLAS COUNTY NEBRASKA IDEALLY IN THE 6TH RANGE ALL IN DOUGLAS COUNTY NEBRASKA DESCRIBED AND BOUNDED AS FOLLOWS

MEASURING AT A POINT ON THE NORTH LINE OF SAID SECTION IN WHICH ANVAT IS 1000 FEET WEST OF THE NE CORNER OF THE WEST 1/4 OF THE NE 1/4 OF SAID SECTION IN THENCE RUNNING SOUTH A DISTANCE OF 230 FEET THENCE TURNING AN ANGLE OF 89° 55' 53" TO THE LEFT AND RUNNING EAST TO THE WEST LINE OF HILLSIDE ADDITION AS PLATTED AND RECORDED A DISTANCE OF 200 FEET THENCE TURNING AN ANGLE OF 89° 55' 53" TO THE RIGHT AND RUNNING SOUTH ALONG THE WEST LINE OF SAID HILLSIDE ADDITION A DISTANCE OF 1660 FEET THENCE TURNING AN ANGLE OF 90° 00' 00" TO THE RIGHT AND RUNNING WEST A DISTANCE OF 3000 FEET THENCE TURNING AN ANGLE OF 90° 00' 00" TO THE RIGHT AND RUNNING WESTERLY ALONG THE NORTH LINE OF A PREVIOUSLY PLATTED AND RECORDED DISTANCE OF 1800 FEET THENCE TURNING AN ANGLE OF 90° 00' 00" TO THE LEFT AND RUNNING WESTERLY ALONG THE WEST LINE OF SAID STREET A DISTANCE OF 400 FEET THENCE TURNING AN ANGLE OF 90° 00' 00" TO THE LEFT AND RUNNING WESTERLY ALONG THE WEST LINE OF SAID STREET TO ITS INTERSECTION WITH THE NORTH LINE OF HAMILTON STREET AS PLATTED AND RECORDED A DISTANCE OF 1350 FEET THENCE RUNNING WESTERLY ALONG THE NORTH LINE OF HAMILTON STREET A DISTANCE OF 100 FEET TO THE RIGHT WHOSE RADIUS IS 100 FEET A DISTANCE OF 100 FEET THENCE TURNING AN ANGLE OF 90° 00' 00" TO THE LEFT AND RUNNING WESTERLY ALONG THE WEST LINE OF HAMILTON STREET A DISTANCE OF 1000 FEET THENCE CONTINUING WESTERLY ON THE NORTH LINE OF HAMILTON STREET TO THE EASTERLY LINE EXTENDED OF MAENNER DRIVE AS PLATTED AND RECORDED ALONG A CURVE TO THE LEFT WHOSE RADIUS IS 4180 FEET A DISTANCE OF 10729 FEET THENCE CONTINUING SOUTHWESTERLY ALONG MAENNER DRIVE A DISTANCE OF 500 FEET THENCE TURNING AN ANGLE OF 89° 59' 40" TO THE LEFT AND RUNNING SOUTHWESTERLY ALONG THE WESTERLY LINE OF MAENNER DRIVE A DISTANCE OF 201 FEET THENCE TURNING AN ANGLE OF 90° 00' 00" TO THE RIGHT AND RUNNING SOUTHWESTERLY ALONG THE NORTH LINE EXTENDED OF SAID HILLSIDE ADDITION AS PLATTED AND RECORDED TO THE CENTERLINE OF COLE CREEK AS PLATTED AND RECORDED A DISTANCE OF 1694 FEET THENCE TURNING AN ANGLE OF 90° 00' 00" TO THE RIGHT AND RUNNING NORTHWESTERLY A DISTANCE OF 500 FEET THENCE CONTINUING NORTHWESTERLY ALONG A CURVE TO THE RIGHT WHOSE RADIUS IS 930 FEET A DISTANCE OF 1715 FEET THENCE TURNING AN ANGLE OF 90° 00' 00" TO THE RIGHT AND RUNNING EAST A DISTANCE OF 1018 FEET THENCE CONTINUING EASTERLY ON A CURVE TO THE LEFT WHOSE RADIUS IS 40451 FEET A DISTANCE OF 2131 FEET THENCE CONTINUING NORTHWESTERLY ON THE TANGENT TO THE PREVIOUS CURVE A DISTANCE OF 545 FEET THENCE RUNNING NORTHWESTERLY ALONG A CURVE TO THE LEFT WHOSE RADIUS IS 2036 FEET A DISTANCE OF 3006 FEET THENCE TURNING AN ANGLE OF 75° 59' 50" TO THE RIGHT MEASURED FROM THE CHORD OF THE PREVIOUS CURVE AND RUNNING NORTHWESTERLY A DISTANCE OF 600 FEET THENCE TURNING AN ANGLE OF 90° 00' 00" TO THE LEFT AND RUNNING NORTHWESTERLY A DISTANCE OF 2485 FEET THENCE RUNNING NORTHWESTERLY ALONG A CURVE TO THE RIGHT WHOSE RADIUS IS 1907 FEET A DISTANCE OF 1500 FEET THENCE CONTINUING NORTHWESTERLY ON THE TANGENT TO THE PREVIOUS CURVE A DISTANCE OF 203 FEET THENCE TURNING AN ANGLE OF 90° 00' 00" TO THE RIGHT AND RUNNING NORTHWESTERLY A DISTANCE OF 1150 FEET THENCE RUNNING NORTHWESTERLY ON A CURVE TO THE RIGHT WHOSE RADIUS IS 415 FEET A DISTANCE OF 415 FEET THENCE RUNNING NORTH ALONG THE TANGENT TO THE PREVIOUS CURVE A DISTANCE OF 500 FEET THENCE TURNING AN ANGLE OF 90° 00' 00" TO THE RIGHT AND RUNNING EAST A DISTANCE OF 40 FEET THENCE TURNING AN ANGLE OF 90° 00' 00" TO THE LEFT AND RUNNING NORTH TO THE CENTERLINE OF BLINDING STREET AS PLATTED AND RECORDED A DISTANCE OF 1500 FEET THENCE TURNING AN ANGLE OF 90° 00' 00" TO THE RIGHT AND RUNNING EAST ON THE CENTERLINE OF BONDIO STREET TO THE POINT OF BEGINNING A DISTANCE OF 6000 FEET

DATE July 21 20 1955

Wm L Hill E 959 SURVEYOR HENNINGSON, DURHAM & RICHARDSON CONSULTING ENGINEERS





DEDICATION

KNOW ALL MEN BY THESE PRESENTS THAT T H MAENNER CO, A NEBRASKA CORPORATION OF OMAHA, NEBRASKA, BEING SOLE OWNER AND PROPRIETOR OF THE LAND DESCRIBED IN THE SURVEYORS CERTIFICATE AND EMBRACED WITHIN THIS PLAT HAS CAUSED THE SAME TO BE SUBDIVIDED INTO LOTS, BLOCKS, STREETS AND AVENUES, SAID SUBDIVISION TO BE KNOWN AS MAENNER HILLSIDE ADDITION, BLOCKS 1, 3, 13, 14 AND 15; LOTS 1 THROUGH 10 INCLUSIVE, BLOCK 2; LOTS 1 THROUGH 10 INCLUSIVE AND LOTS 11 THROUGH 12 INCLUSIVE, BLOCK 3; LOTS 1 THROUGH 5 INCLUSIVE AND LOTS 6 THROUGH 10 INCLUSIVE, BLOCK 4; LOTS 1 THROUGH 5 INCLUSIVE, BLOCK 5; LOTS 1 THROUGH 5 INCLUSIVE, BLOCK 6; LOTS 1 THROUGH 5 INCLUSIVE, BLOCK 7; LOTS 1 THROUGH 5 INCLUSIVE, BLOCK 8; LOTS 1 THROUGH 5 INCLUSIVE, BLOCK 9; LOTS 1 THROUGH 5 INCLUSIVE, BLOCK 10; LOTS 1 THROUGH 5 INCLUSIVE, BLOCK 11; LOTS 1 THROUGH 5 INCLUSIVE, BLOCK 12; AND LOTS 1 THROUGH 5 INCLUSIVE, BLOCK 13; AND WE HEREBY RATIFY AND APPROVE OF THE DISPOSITION OF THE PROPERTY AS SHOWN ON THIS PLAT AND WE HEREBY DEDICATE TO THE PUBLIC FOR PUBLIC USE, THE STREETS, AVENUES, AND CREEK AS SHOWN HEREIN, AND WE HEREBY GRANT TO THE PUBLIC FOR STORM DRAINAGE AND UTILITIES PURPOSES THE EASEMENTS AS SHOWN HEREIN. THESE PRESENTS TO BE SIGNED BY THE SAID T H MAENNER CO, HAS CAUSED CORPORATE SEAL TO BE HEREBY AFFIXED IN ACCORDANCE WITH A RESOLUTION OF THE BOARD OF DIRECTORS OF SAID CORPORATION THIS 14th DAY OF JULY AD 1955

T H MAENNER CO.  
BY: J. H. Macomber  
PRESIDENT  
ATTEST: J. L. Hill  
SECRETARY

IN THE PRESENCE OF A. R. ...

ACKNOWLEDGEMENT

STATE OF NEBRASKA } ss  
COUNTY OF DOUGLAS }  
ON THIS 14th DAY OF JULY AD 1955 BEFORE ME A NOTARY PUBLIC, DULY COMMISSIONED AND QUALIFIED IN AND FOR SAID COUNTY PERSONALLY CAME THE ABOVE T H MAENNER, PRESIDENT AND J. L. HILL, SECRETARY OF SAID T H MAENNER CO., WHO ARE PERSONALLY KNOWN TO ME TO BE THE SAID PERSONS WHOSE NAMES ARE AFFIXED TO THE ABOVE DEDICATION ON THIS PLAT, AS PRESIDENT AND SECRETARY OF SAID CORPORATION AND THEY ACKNOWLEDGE THE SIGNING OF SAID DEDICATION TO BE THEIR OWN VOLUNTARY ACT AND DEED AND VOLUNTARY ACT AND DEED OF SAID CORPORATION

WITNESS MY HAND AND OFFICIAL SEAL AT OMAHA, NEBRASKA IN SAID COUNTY, THE DATE LAST ABOVE SAID.

MY COMMISSION EXPIRES ON THE 19th DAY OF JULY AD 1956  
J. L. Hill  
NOTARY PUBLIC

APPROVAL OMAHA CITY PLANNING COMMISSION

THIS PLAT OF MAENNER HILLSIDE ADDITION WAS APPROVED BY THE CITY PLANNING COMMISSION OF THE CITY OF OMAHA, NEBRASKA ON THIS 14th DAY OF JULY AD 1955

J. L. Hill  
CHAIRMAN OF CITY PLANNING COMMISSION

OMAHA CITY COUNCIL ACCEPTANCE

THE PLAT OF MAENNER HILLSIDE ADDITION WAS APPROVED & ACCEPTED BY THE CITY COUNCIL OF THE CITY OF OMAHA, NEBRASKA ON THIS 14th DAY OF AUGUST AD 1955

J. H. Macomber  
MAYOR  
ATTEST: J. L. Hill  
CITY CLERK

