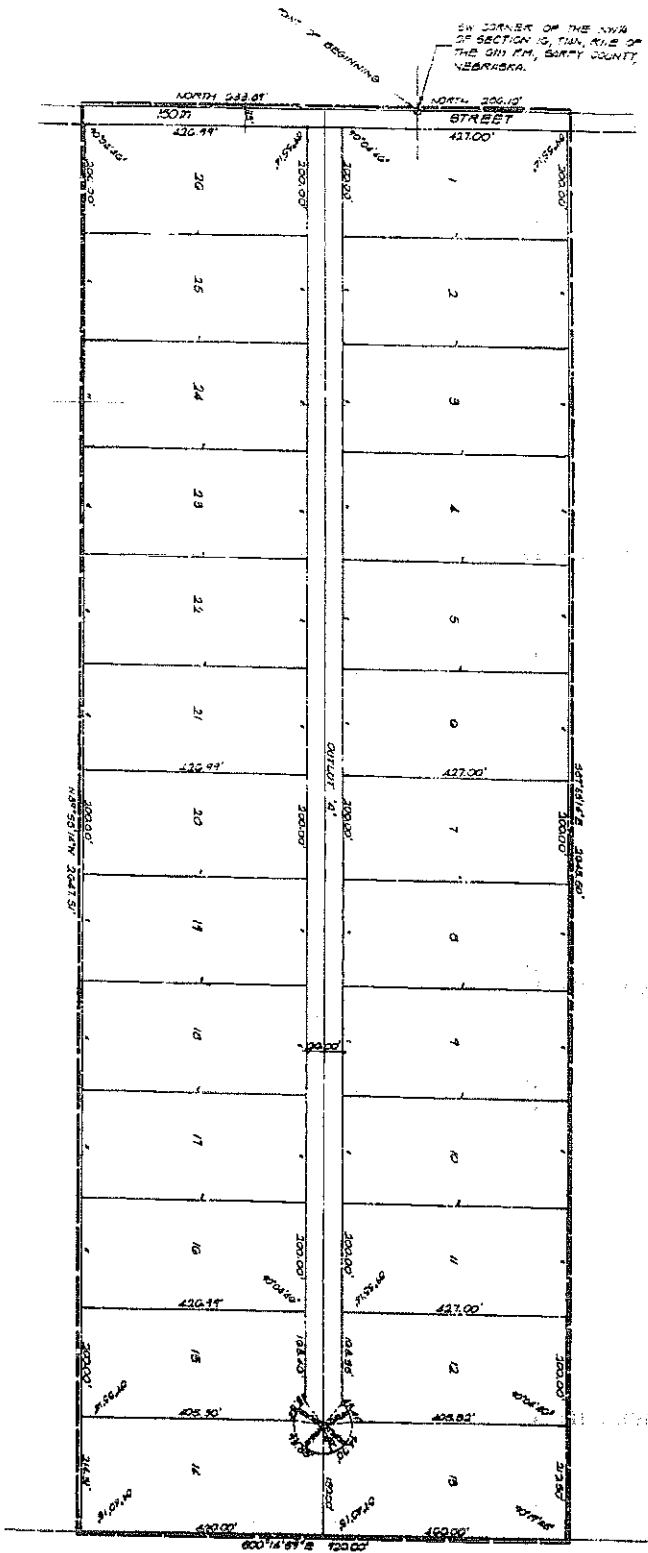


180TH STREET STORAGE PARK

LOT 1 PART 26, INCLUDING 8 OUTLOTS, BEING A PART OF THE NW 1/4 OF SECTION 10, T14N, R16E OF THE 6TH PM, SENECA COUNTY, IOWA.



STATE OF IOWA
SENeca COUNTY
DEPARTMENT OF REVENUE
OFFICE OF THE COUNTY CLERK

NOTICE: The undersigned, County Clerk of Seneca County, Iowa, do hereby certify that the following is a true and correct copy of the original record as the same appears in the records of the County Clerk of Seneca County, Iowa, and that the same has been duly recorded in the records of the County Clerk of Seneca County, Iowa, and that the same has been duly indexed in the records of the County Clerk of Seneca County, Iowa.

Witness my hand and the seal of the County Clerk of Seneca County, Iowa, at Seneca, Iowa, this 12th day of April, 1912.

[Signature]
 County Clerk



STATE OF IOWA
SENeca COUNTY
DEPARTMENT OF REVENUE
OFFICE OF THE COUNTY CLERK

NOTICE: The undersigned, County Clerk of Seneca County, Iowa, do hereby certify that the following is a true and correct copy of the original record as the same appears in the records of the County Clerk of Seneca County, Iowa, and that the same has been duly recorded in the records of the County Clerk of Seneca County, Iowa, and that the same has been duly indexed in the records of the County Clerk of Seneca County, Iowa.

Witness my hand and the seal of the County Clerk of Seneca County, Iowa, at Seneca, Iowa, this 12th day of April, 1912.

[Signature]
 County Clerk



STATE OF IOWA
SENeca COUNTY
DEPARTMENT OF REVENUE
OFFICE OF THE COUNTY CLERK

NOTICE: The undersigned, County Clerk of Seneca County, Iowa, do hereby certify that the following is a true and correct copy of the original record as the same appears in the records of the County Clerk of Seneca County, Iowa, and that the same has been duly recorded in the records of the County Clerk of Seneca County, Iowa, and that the same has been duly indexed in the records of the County Clerk of Seneca County, Iowa.

Witness my hand and the seal of the County Clerk of Seneca County, Iowa, at Seneca, Iowa, this 12th day of April, 1912.

[Signature]
 County Clerk

P

THE OFFICE RECORDS
 AND DOCUMENTS
 OF SENeca COUNTY, IOWA

180TH STREET STORAGE PARK

APR 12 1912

1912

12

12

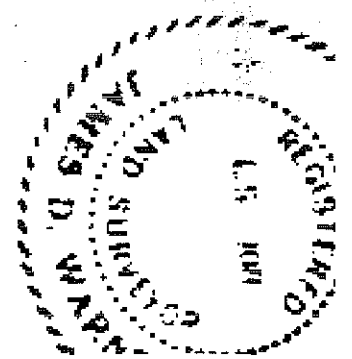
12

12

MARCH 11, 1885

Amos A. Williams

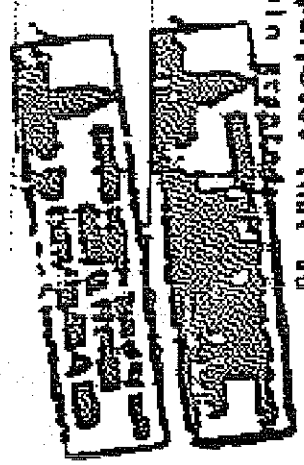
Registered Land Surveyor T. 4 10A



DEDICATION

Know all men by these presents, that we, Rowland G. and Lawrence Planchard (husband and wife) being the Owners, and

Being the mortgage holders of the land described within the surveyor's certificate and endorsed within this plat, have caused said land to be subdivided into lots to be numbered, as shown, said subdivision to be hereafter known as 180th Street Storage Park and we do hereby ratify and approve of the disposition of our property as shown on this plat and we hereby grant a perpetual easement to the Omaha Public Power District, Northwestern Bell Telephone Company, and any company which has been granted a franchise to provide a cable television system in the area to be subdivide, their successors and assigns, to erect, operate, maintain, repair and renew poles, wires, crossarms, down guys and anchors, cables, conduits and other related facilities, and to attend thereon wires or cables for the carrying and transmission of electric current for light, heat, and power for the transmission of signals and signals of all kinds and the reception thereof, including signals provided by a cable television system and their reception, on, over, through, under and across Out of "A" No permanent buildings, trees, retaining walls or loose rock walls shall be placed in the said easement ways, but the same may be used for drainage, shrubs, landscaping and other purposes that do not tend or later interfere with the intended uses of rights herein provided that do



Lawrence Planchard