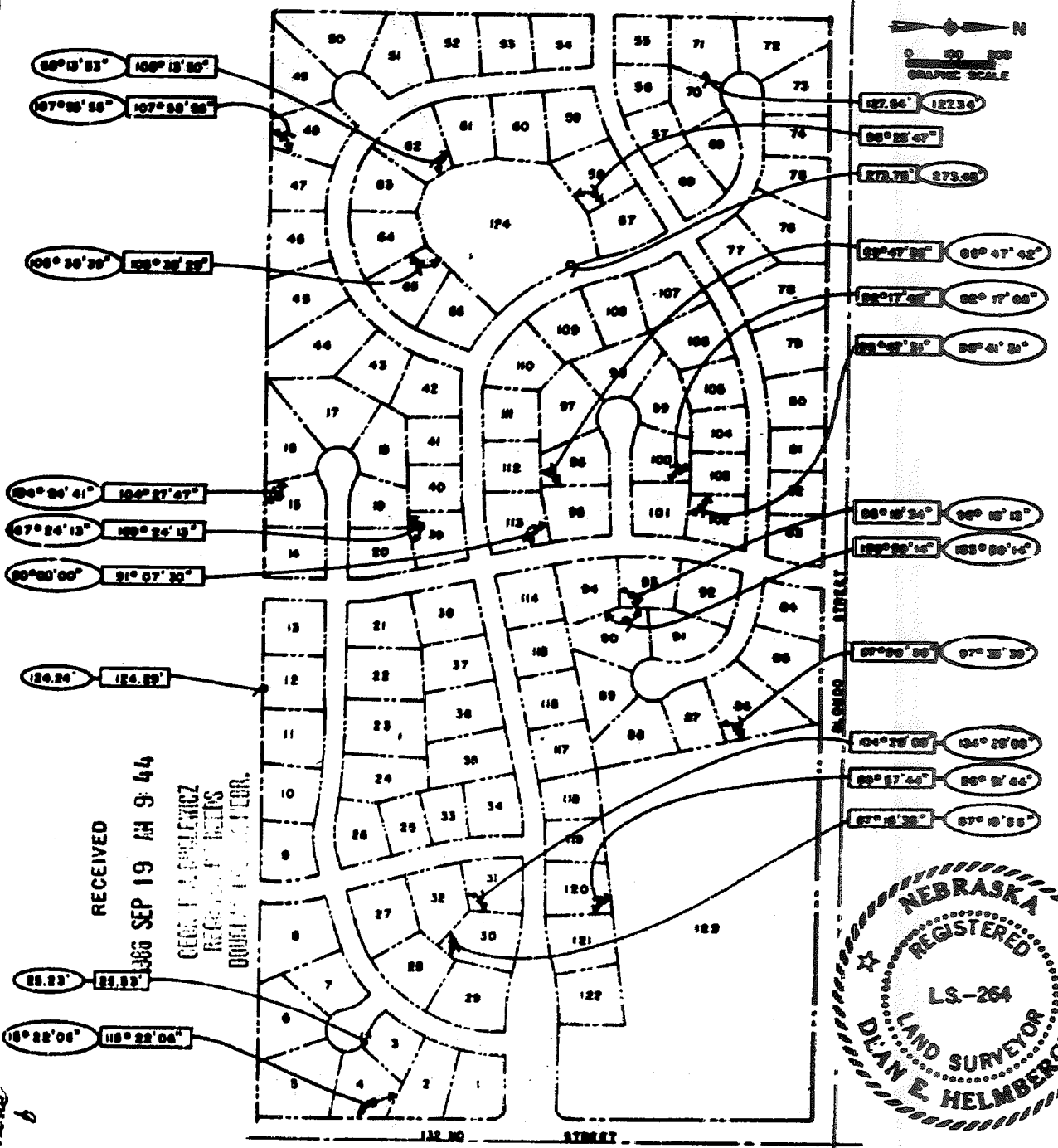


**AFFIDAVIT
LINDEN PARK**

This is a correction to Lots 3, 4, 12, 15, 30, 31, 39, 48, 50, 62, 65, 71, 86, 90, 93, 96, 100, 102, 113, 120 and 124 of Linden Park, a subdivision located in the North Half (N1/2) of the Northeast Quarter (NE1/4) of Section 13, Township 15 North, Range 11 East of the 6th P.M., Douglas County, Nebraska, as platted and recorded.



RECEIVED
SEP 19 AM 9:44
CLERK OF DISTRICT COURTS
DOUGLAS COUNTY, NEBRASKA

This is to certify that the lot dimensions and angles encircled on this plat were shown in error on the original platting of Linden Park and I further certify that the lot dimensions and angles enclosed within a rectangle as shown on this affidavit are the true, correct and originally intended lot dimensions and angles.

Date Aug 12, 1906

Dean E. Helmberger
Dean E. Helmberger, L.S. 264

LEGEND

- (No. 6) INFORMATION TO BE CORRECTED
- (No. 7) CORRECTED INFORMATION

EX 289 N 89.335 deg C/O FEE 16.00
319 N 82.235 deg DEL MA MC BC
TWCY VR

SHEET 1/1
DATE 9-12-86
K.N.A. NO. B830941

**AFFIDAVIT
CORRECTION PLAT**

K&M KIRGHAM, MICHAEL AND ASSOCIATES

18062
 RECEIVED
 SEP 19 AM 9:44
 CLERK OF DISTRICT COURTS
 DOUGLAS COUNTY, NEBRASKA
 FB 10-2-573
 MC BC



ADDRESS
ENGINEERS
PLANNERS
STATES