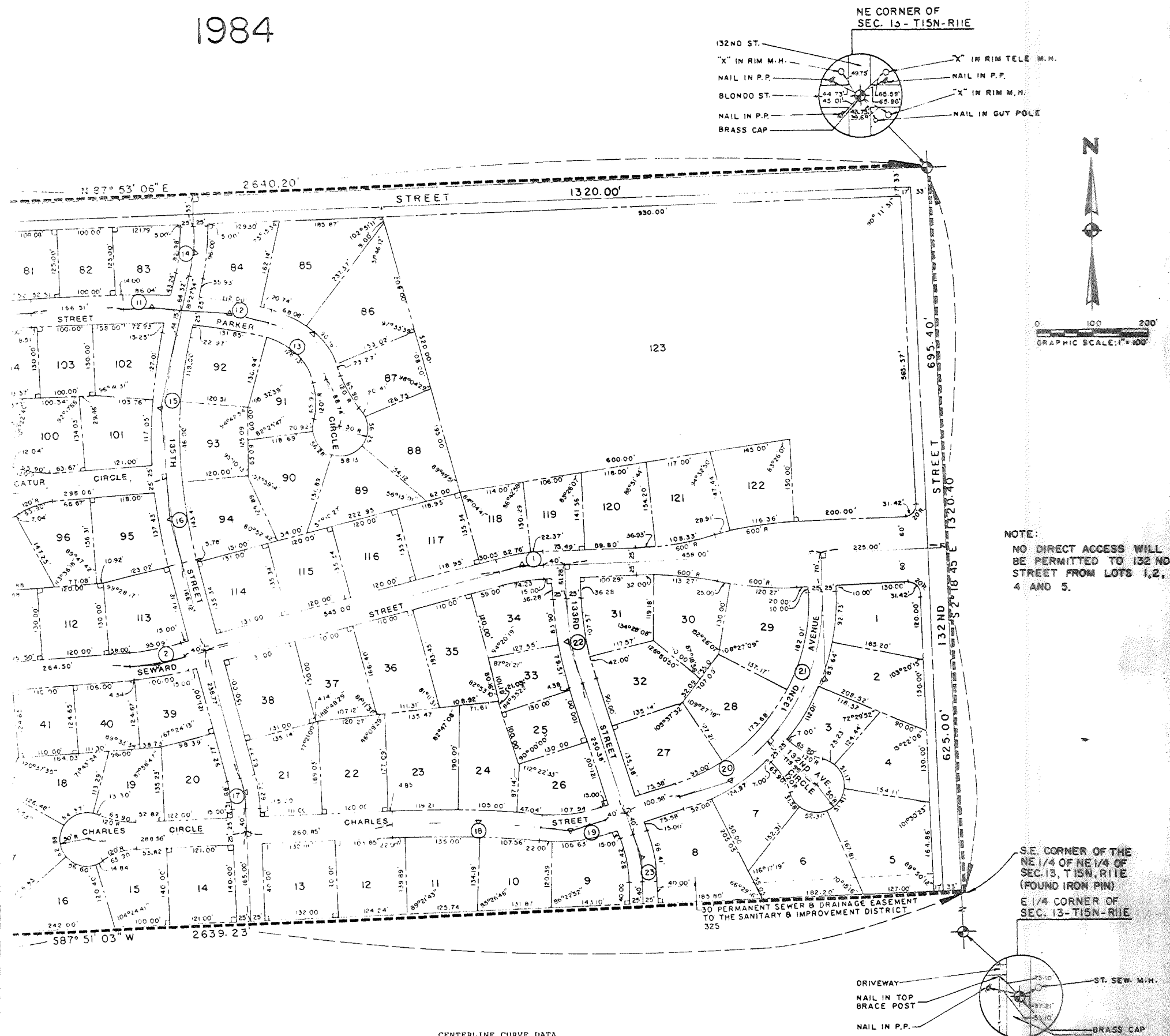


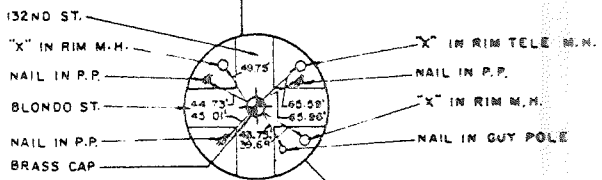
LINDEN PARK

(LOTS 1 THRU 124 INCLUSIVE)
 OF THE NE 1/4 OF SECTION 13,
 T15N R11E
 SHELBY COUNTY, NEBRASKA

1984



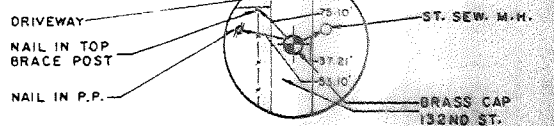
NE CORNER OF
 SEC. 13 - T15N-R11E



0 100 200
 GRAPHIC SCALE: 1" = 100'

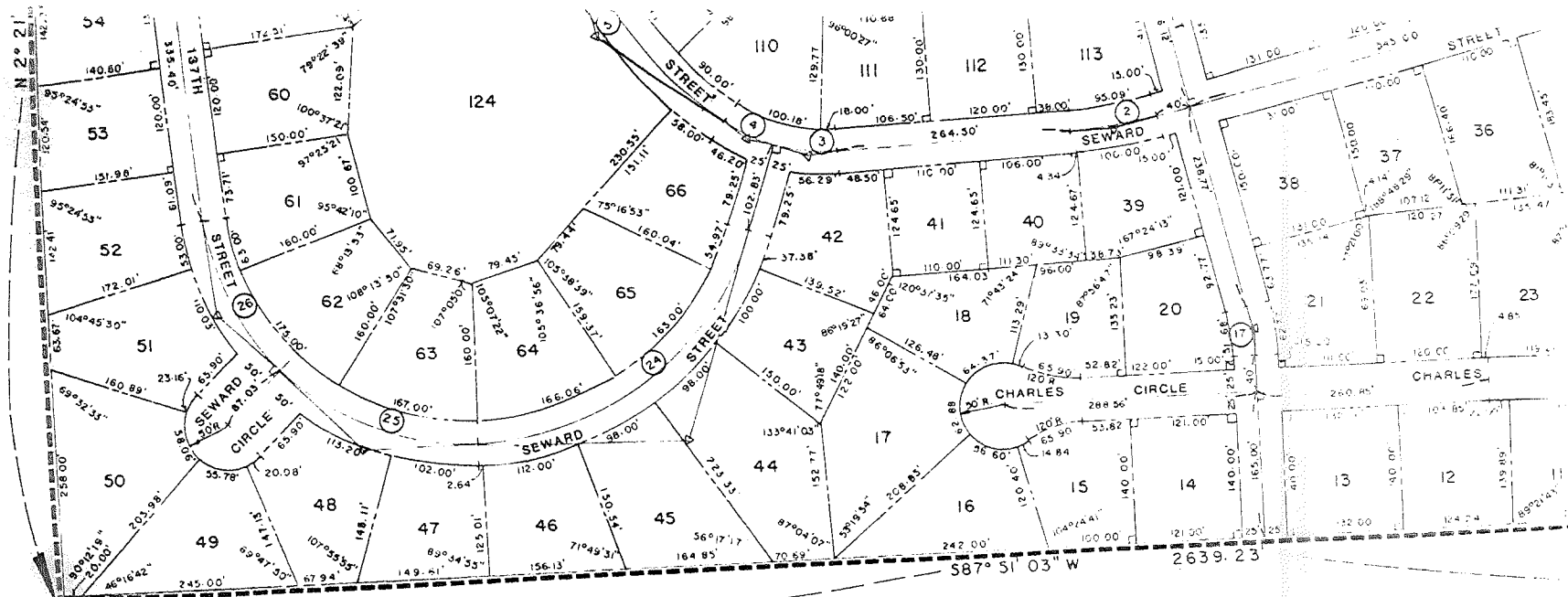
NOTE:
 NO DIRECT ACCESS WILL
 BE PERMITTED TO 132ND
 STREET FROM LOTS 1,
 2, 4 AND 5.

S.E. CORNER OF THE
 NE 1/4 OF NE 1/4 OF
 SEC. 13, T15N, R11E
 (FOUND IRON PIN)
 E 1/4 CORNER OF
 SEC. 13-T15N-R11E



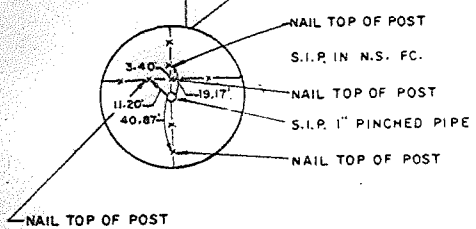
CENTERLINE CURVE DATA

1) Δ = 12°29'12"	2) Δ = 10°35'47"	3) Δ = 21°01'27"	4) Δ = 18°25'05"
D = 15°40'14"	D = 10°37'36"	D = 29°07'58"	D = 29°07'58"
R = 365.63'	R = 539.17'	R = 196.67'	R = 196.67'
T = 40.00'	T = 50.00'	T = 36.49'	T = 31.89'
L = 79.68'	L = 99.71'	L = 72.17'	L = 63.22'



TIES TO CENTER OF SEC. 13 - T15N - R11E

S.W. CORNER OF THE NW 1/4 OF THE NE 1/4 SEC. 13, T15N, R11E (SET 1" PINCHED PIPE)



DEDICATION

KNOW ALL MEN BY THESE PRESENTS:

That we, Daniel E. Sheehan, President and Eldon J. McKamy, Secretary of The Catholic Archbishop of Omaha, a Nebraska Non-Profit Corporation, and that we J. R. Maenner, President and Robert P. Horgan, Secretary of the Pinetree Development Company, a Nebraska Corporation, sole owners and proprietors of the land embraced within this plat and described in the Surveyor's Certificate, have caused the same to be subdivided into lots and streets, said subdivision to be known as LINDEN PARK, the lots to be numbered as shown (Lots 1 through 124 inclusive), and we approve the disposition of the property as shown on this plat and we hereby dedicate to the public for the public use the streets, circles and avenues as shown herein and we do also grant the easements shown on the plat to the agencies designated and their assigns for the purposes noted. We do further grant a perpetual license in favor of and granting to the Omaha Public Power District, and any company which has been granted a franchise to provide a Cable Television system within the boundaries of this plat, and the Northwestern Bell Telephone Company their successors and assigns, to erect and operate, maintain, repair and renew underground cables or conduits, poles with the necessary supports, sustaining wires, crossarms, guys and anchors and other instrumentalities, and extend thereon wire for the carrying and transmission of electric current for light, heat, power and for the transmission of signals and sounds of all kinds including signals provided by a Cable Television System, and the reception on, over, through, under and across a five (5) foot wide strip of land abutting the front and the side boundary lines of all lots; an eight (8) foot wide strip of land abutting the rear boundary lines of all interiors lots and all exterior lots that are adjacent to presently platted and recorded lots; and a sixteen (16) foot wide strip of land abutting the rear boundary lines of all exterior lots that are not adjacent to presently platted and recorded lots. The term exterior lots is herein defined as those lots forming the outer perimeter of the described addition. The sixteen (16) foot wide easement will be reduced to an eight (8) foot wide strip when the adjacent land is surveyed, platted and recorded. We do further grant a perpetual easement to the Metropolitan Utilities District of Omaha, their successors and assigns to erect, install, operate, maintain, repair and renew pipelines, hydrants, and other related facilities, and to extend thereon pipes for the transmission of gas and water on, through, under and across a five (5) foot wide strip of land abutting all cul-de-sac streets. No permanent buildings or retaining walls shall be placed in the above described easement ways, but the same may be used for gardens, shrubs, landscaping and other purposes that do not then or later interfere with the aforesaid uses or rights here in granted.

IN WITNESS WHEREOF, we do hereby set our hands this day of February, 1984 A.D.

FOR THE CATHOLIC ARCHBISHOP OF OMAHA, A Nebraska Non-Profit Corporation.
 Daniel E. Sheehan, President
 Eldon J. McKamy, Secretary

FOR PINETREE DEVELOPMENT COMPANY, A Nebraska Corporation
 J. R. Maenner, President
 Robert P. Horgan, Secretary

ACKNOWLEDGEMENT OF GRADING

I hereby certify that a bond has been furnished the City of Omaha, Nebraska in order to insure that the streets within this plat of LINDEN PARK will be graded to the grade provided by the City Engineer and filed with the City of Omaha.

Dated this 14th day of February, 1984, A.D.



John L. Adler, P.E.

- | | |
|-------------------|-------------|
| 1) Δ = 12°29'12" | 2) Δ = 10° |
| D = 15°40'14" | D = 10' |
| R = 365.63' | R = 51' |
| T = 40.00' | T = 51' |
| L = 79.69' | L = 94' |
| 5) Δ = 40°00'52" | 6) Δ = 20° |
| D = 11°37'25" | D = 15' |
| R = 482.98' | R = 36' |
| T = 179.50' | T = 67' |
| L = 344.29' | L = 12' |
| 9) Δ = 27°12'41" | 10) Δ = 32° |
| D = 13°24'54" | D = 7' |
| R = 427.11' | R = 72' |
| T = 103.37' | T = 21' |
| L = 202.44' | L = 41' |
| 13) Δ = 61°10'35" | 14) Δ = 14° |
| D = 39°30'52" | D = 1' |
| R = 145.00' | R = 34' |
| T = 85.71' | T = 4' |
| L = 154.82' | L = 89' |
| 17) Δ = 12°39'00" | 18) Δ = 7° |
| D = 22°06'52" | D = 2' |
| R = 279.09' | R = 20' |
| T = 28.72' | T = 13' |
| L = 57.20' | L = 26' |
| 21) Δ = 45°04'40" | 22) Δ = 15° |
| D = 15°20'48" | D = 7' |
| R = 373.34' | R = 50' |
| T = 154.94' | T = 78' |
| L = 293.73' | L = 15' |
| 25) Δ = 46°47'17" | 26) Δ = 31° |
| D = 19°05'55" | D = 19' |
| R = 300.00' | R = 300' |
| T = 129.78' | T = 102' |
| L = 244.98' | L = 134' |

CORPORATION ACKNOWLEDGEMENT

STATE Nebraska
 COUNTY OF Douglas

On this 14th day of February, 1984, A.D., before me a Notary Public in and for said County personally came the above named Daniel E. Sheehan, President, and Eldon J. McKamy, Secretary of The Catholic Archbishop of Omaha, A Nebraska Non-Profit Corporation, who are personally known to me to be the identical persons whose names are affixed to the instrument as President and Secretary of said Corporation, and they acknowledge the execution therefore to be their voluntary act and deed as such officers and voluntary act and deed of said Corporation and the Corporate Seal of said Corporation was hereto affixed by its authority.

Witness my hand and official seal the last date aforesaid.



My commission expires on the 11th day of November, 1986, A.D.

CORPORATION ACKNOWLEDGEMENT

STATE OF Nebraska
 COUNTY OF Douglas

On this 14th day of February, 1984, A.D., before me a Notary Public in and for said County personally came the above named J.R. Maenner, President, and Robert P. Horgan, Secretary of the Pinetree Development Company, A Nebraska Corporation, who are personally known to me to be the identical persons whose names are affixed to the instrument as President, and Secretary of said Corporation, and they acknowledge the execution therefore to be their voluntary act and deed as such officers and voluntary act and deed of said Corporation and the Corporate Seal of said Corporation was hereto affixed by its authority.

Witness my hand and official seal the last date aforesaid.



My commissions expires on the 11th day of November, 1984, A.D.



This plat of LINDEN PARK was Surveyor's Office on this 14th day of February, 1984, A.D.



LINDEN PARK

(LOTS 1 THRU 124 INCLUSIVE)

N 1/2 OF THE NE 1/4 OF SEC

TOWNSHIP 15 NORTH, RANGE

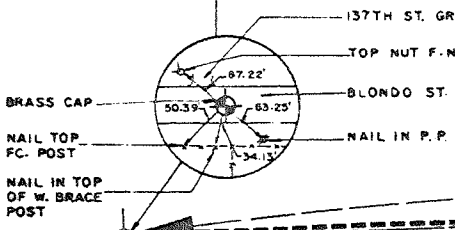
DOUGLAS COUNTY, NEBRASKA

1984

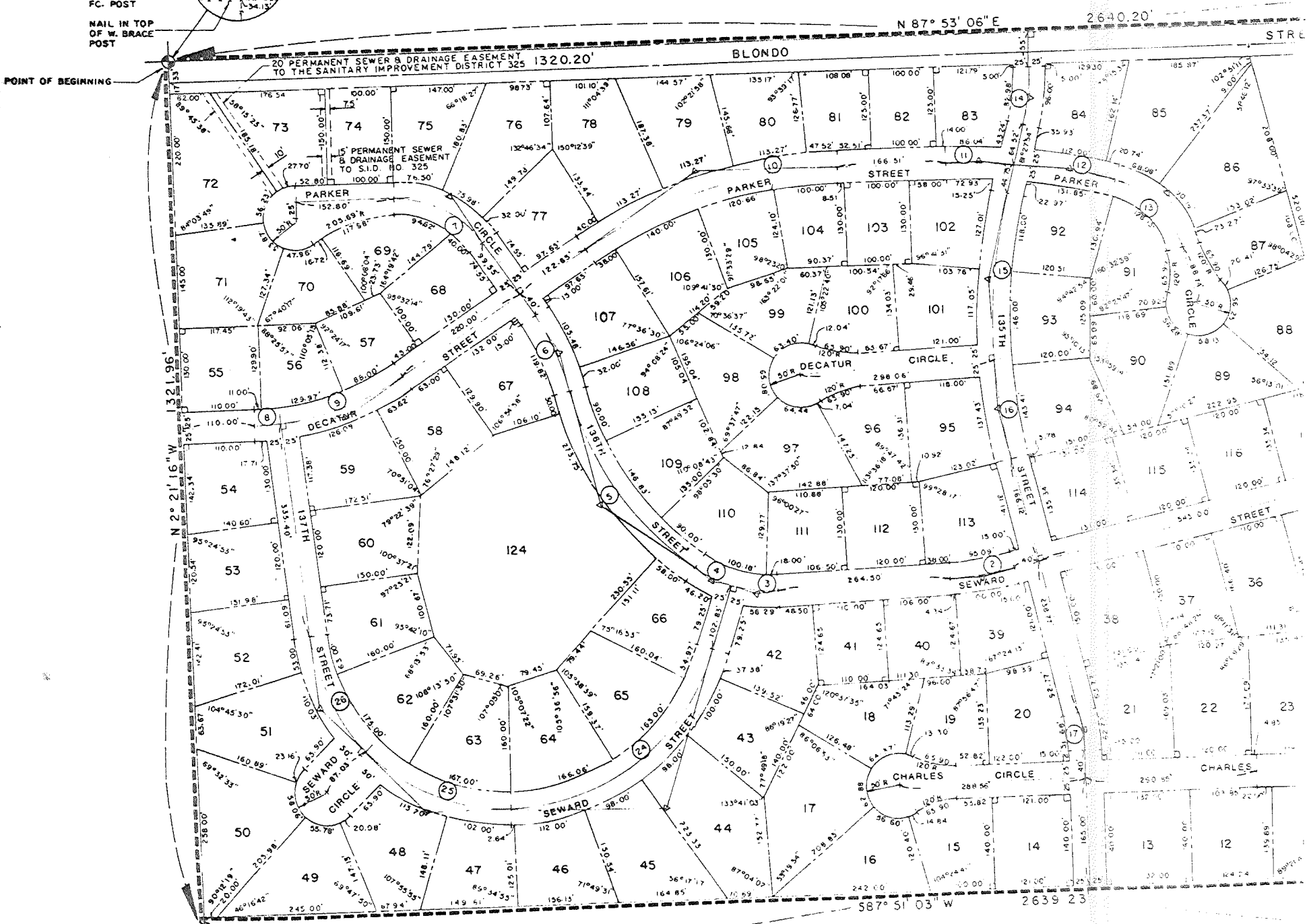
RECEIVED
1984 JUL 20 PM 4:15
C. HAROLD NEIDER
REGISTERED SURVEYOR
DOUGLAS COUNTY, NEBRASKA

1735
57
ms. Adler
1-9
1-10
1-11
1-12
1-13
1-14
1-15
1-16
1-17
1-18
1-19
1-20
1-21
1-22
1-23
1-24

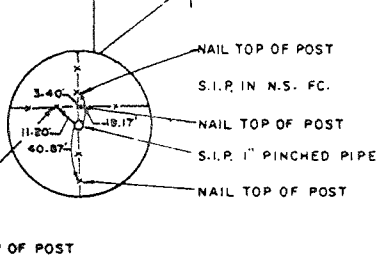
N 1/4 CORNER OF SEC. 13-T15N-R11E



NOTE:
NO DIRECT ACCESS WILL BE PERMITTED TO BLONDO STREET FROM LOTS 72 THROUGH 76 INCLUSIVE AND FROM LOTS 78 THROUGH 85 INCLUSIVE.



TIES TO CENTER OF SEC. 13-T15N-R11E



S.W. CORNER OF THE NW 1/4 OF THE NE 1/4 SEC. 13, T15N, R11E (SET 1\"/>

ACKNOWLEDGEMENT OF GRADING

I hereby certify that a bond has been furnished the City of Omaha, Nebraska in order to insure that the streets within this plat of LINDEN PARK will be graded to the grades approved by the City Engineer and filed with the City of Omaha.

Dated this 21st day of July, 1984, A.D.



John L. Adler, P.E.

DEDICATION

KNOW ALL MEN BY THESE PRESENTS: That we, Daniel E. Sheehan, President and Eldon J. McKamy, Secretary of The Catholic Archbishop of Omaha, a Nebraska Non-Profit Corporation, and that we J. R. Maenner, President and Robert P. Horgan, Secretary of the Pinetree Development Company, a Nebraska Corporation, sole owners and proprietors of the land embraced within this plat and described in the Surveyor's Certificate, have caused the same to be subdivided into lots and streets, said subdivision to be known as LINDEN PARK, the lots to be numbered as shown (Lots 1 through 124 inclusive), and we

CORPORATION ACKNOWLEDGEMENT

1) Δ = 12°29'12"	2) Δ = 15°40'14"
P = 365.63'	P = 365.63'
T = 30.00'	T = 30.00'
L = 79.65'	L = 79.65'
5) Δ = 40°00'52"	6) Δ = 11°37'20"
P = 117.37'20"	P = 117.37'20"
T = 193.98'	T = 193.98'
L = 174.50'	L = 174.50'
9) Δ = 27°12'31"	10) Δ = 13°24'54"
P = 427.11'	P = 427.11'
T = 193.37'	T = 193.37'
L = 202.84'	L = 202.84'
13) Δ = 41°10'25"	14) Δ = 37°30'52"
P = 377.30'52"	P = 377.30'52"
T = 145.00'	T = 145.00'
L = 85.71'	L = 85.71'
17) Δ = 12°30'00"	18) Δ = 27°06'52"
P = 277.06'52"	P = 277.06'52"
T = 259.04'	T = 259.04'
L = 24.72'	L = 24.72'
21) Δ = 45°04'40"	22) Δ = 15°40'14"
P = 157.00'44"	P = 157.00'44"
T = 373.54'	T = 373.54'
L = 154.84'	L = 154.84'
25) Δ = 46°37'12"	26) Δ = 13°05'55"
P = 137.05'55"	P = 137.05'55"
L = 310.00'	L = 310.00'