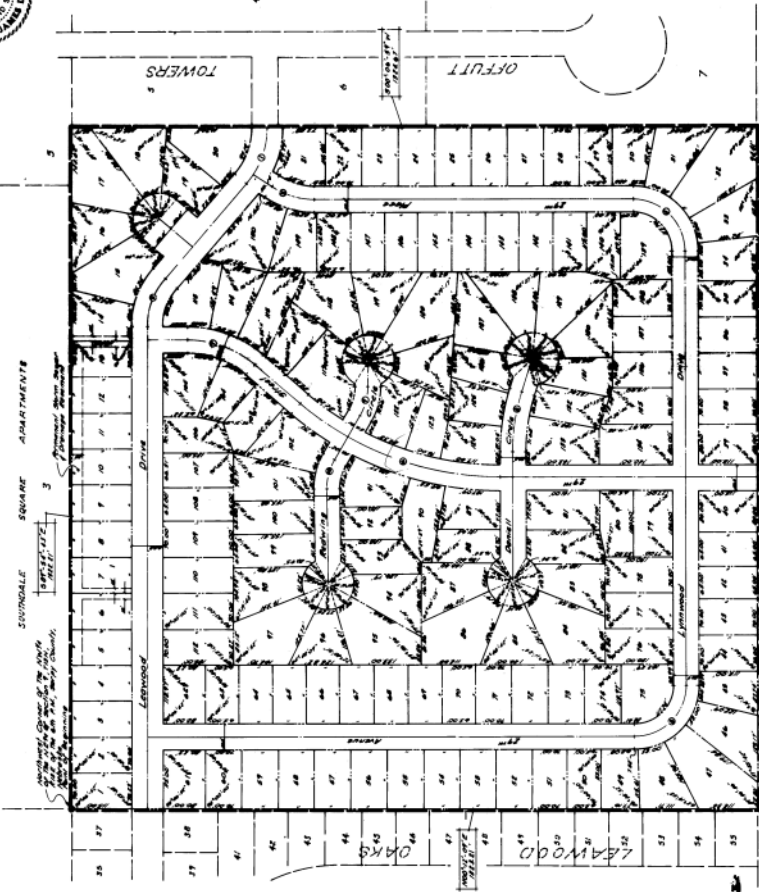


# LEAWOOD OAKS III

LOTS 1 THROUGH 180, INCLUSIVE  
BEING A PLATTING OF THE NW 1/4 OF SECTION 9, T13N,  
R15E OF THE 6TH P.M., SARRY COUNTY, NEBRASKA.



CELEBRATE - OWNER - SHIP

1.	5.1	44,573,400	1.	10.1	53,242,200
2.	5.2	44,573,400	2.	10.2	53,242,200
3.	5.3	44,573,400	3.	10.3	53,242,200
4.	5.4	44,573,400	4.	10.4	53,242,200
5.	5.5	44,573,400	5.	10.5	53,242,200
6.	5.6	44,573,400	6.	10.6	53,242,200
7.	5.7	44,573,400	7.	10.7	53,242,200
8.	5.8	44,573,400	8.	10.8	53,242,200
9.	5.9	44,573,400	9.	10.9	53,242,200
10.	5.10	44,573,400	10.	10.10	53,242,200

ALL DISTRICT AND COUNCIL APPROVED

**SECTION 1, SUBSECTION 2**  
WHEREAS, the undersigned, by their action, have caused to be prepared a plat of lots 1 through 180, inclusive, being a platting of the NW 1/4 of section 9, township 13 north, range 15 east, of the 6th principal meridian, 6th range east, of the 6th principal meridian, Sarry County, Nebraska; and

**SECTION 2, SUBSECTION 1**  
AND WHEREAS, the undersigned, by their action, have caused to be prepared a plat of lots 1 through 180, inclusive, being a platting of the NW 1/4 of section 9, township 13 north, range 15 east, of the 6th principal meridian, 6th range east, of the 6th principal meridian, Sarry County, Nebraska; and

**SECTION 3, SUBSECTION 1**  
AND WHEREAS, the undersigned, by their action, have caused to be prepared a plat of lots 1 through 180, inclusive, being a platting of the NW 1/4 of section 9, township 13 north, range 15 east, of the 6th principal meridian, 6th range east, of the 6th principal meridian, Sarry County, Nebraska; and

**SECTION 4, SUBSECTION 1**  
AND WHEREAS, the undersigned, by their action, have caused to be prepared a plat of lots 1 through 180, inclusive, being a platting of the NW 1/4 of section 9, township 13 north, range 15 east, of the 6th principal meridian, 6th range east, of the 6th principal meridian, Sarry County, Nebraska; and

**SECTION 5, SUBSECTION 1**  
AND WHEREAS, the undersigned, by their action, have caused to be prepared a plat of lots 1 through 180, inclusive, being a platting of the NW 1/4 of section 9, township 13 north, range 15 east, of the 6th principal meridian, 6th range east, of the 6th principal meridian, Sarry County, Nebraska; and

**SECTION 6, SUBSECTION 1**  
AND WHEREAS, the undersigned, by their action, have caused to be prepared a plat of lots 1 through 180, inclusive, being a platting of the NW 1/4 of section 9, township 13 north, range 15 east, of the 6th principal meridian, 6th range east, of the 6th principal meridian, Sarry County, Nebraska; and

**SECTION 7, SUBSECTION 1**  
AND WHEREAS, the undersigned, by their action, have caused to be prepared a plat of lots 1 through 180, inclusive, being a platting of the NW 1/4 of section 9, township 13 north, range 15 east, of the 6th principal meridian, 6th range east, of the 6th principal meridian, Sarry County, Nebraska; and

**SECTION 8, SUBSECTION 1**  
AND WHEREAS, the undersigned, by their action, have caused to be prepared a plat of lots 1 through 180, inclusive, being a platting of the NW 1/4 of section 9, township 13 north, range 15 east, of the 6th principal meridian, 6th range east, of the 6th principal meridian, Sarry County, Nebraska; and

**SECTION 9, SUBSECTION 1**  
AND WHEREAS, the undersigned, by their action, have caused to be prepared a plat of lots 1 through 180, inclusive, being a platting of the NW 1/4 of section 9, township 13 north, range 15 east, of the 6th principal meridian, 6th range east, of the 6th principal meridian, Sarry County, Nebraska; and

**SECTION 10, SUBSECTION 1**  
AND WHEREAS, the undersigned, by their action, have caused to be prepared a plat of lots 1 through 180, inclusive, being a platting of the NW 1/4 of section 9, township 13 north, range 15 east, of the 6th principal meridian, 6th range east, of the 6th principal meridian, Sarry County, Nebraska; and

**SECTION 11, SUBSECTION 1**  
AND WHEREAS, the undersigned, by their action, have caused to be prepared a plat of lots 1 through 180, inclusive, being a platting of the NW 1/4 of section 9, township 13 north, range 15 east, of the 6th principal meridian, 6th range east, of the 6th principal meridian, Sarry County, Nebraska; and