

865

ST.

96 th.

OAKDALE

WOODS

PERRY'S

OAK CIR.

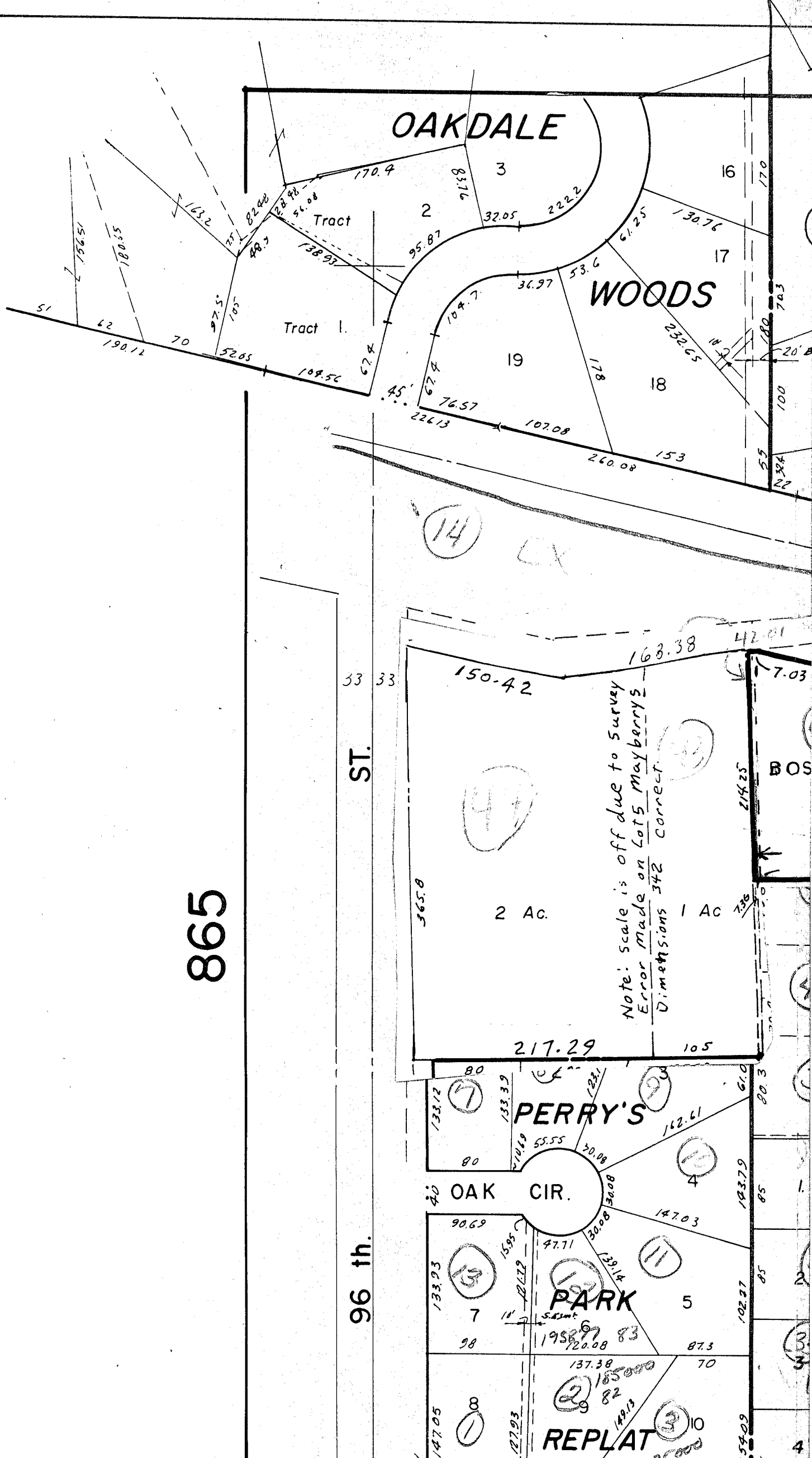
PARK

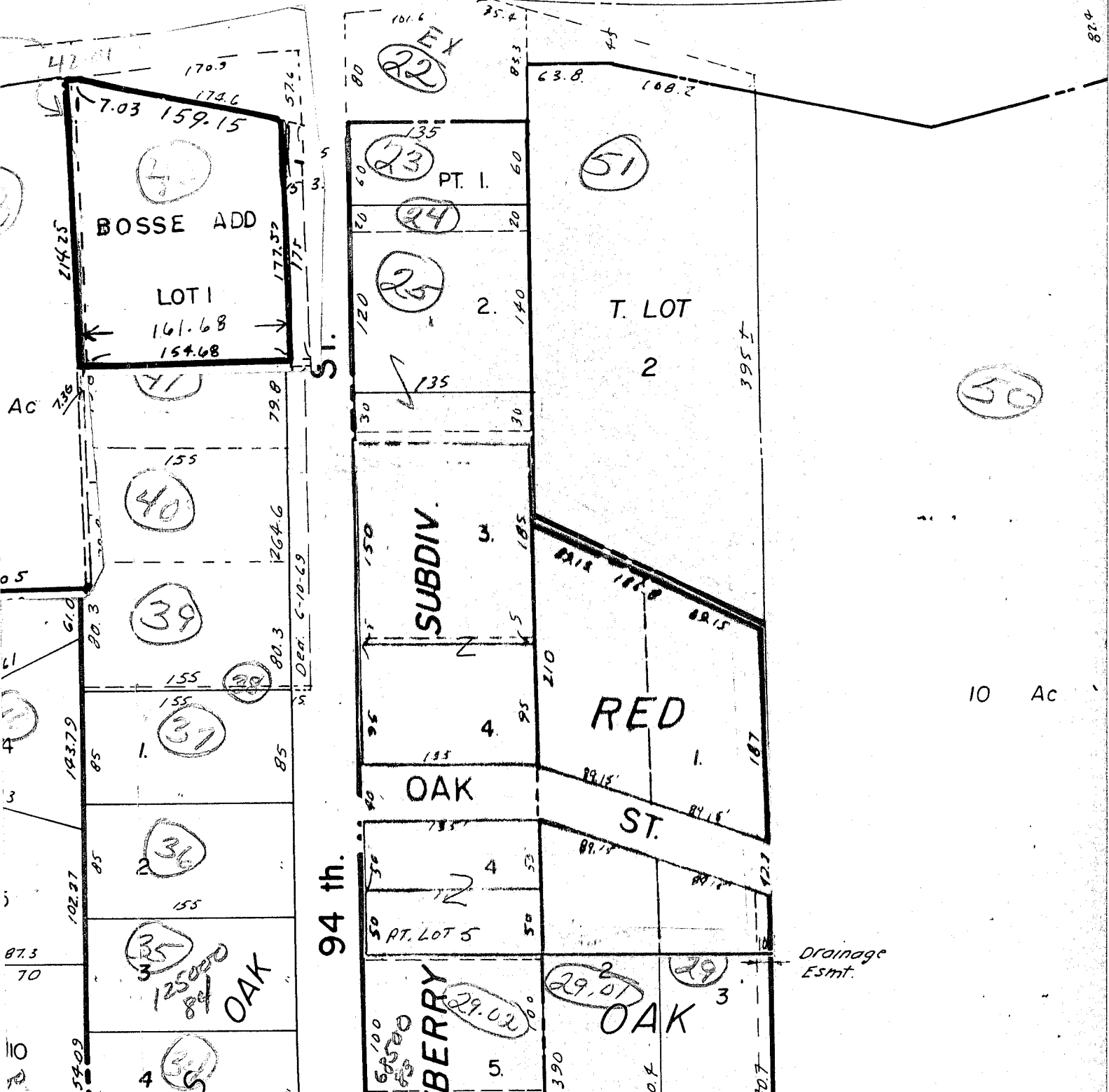
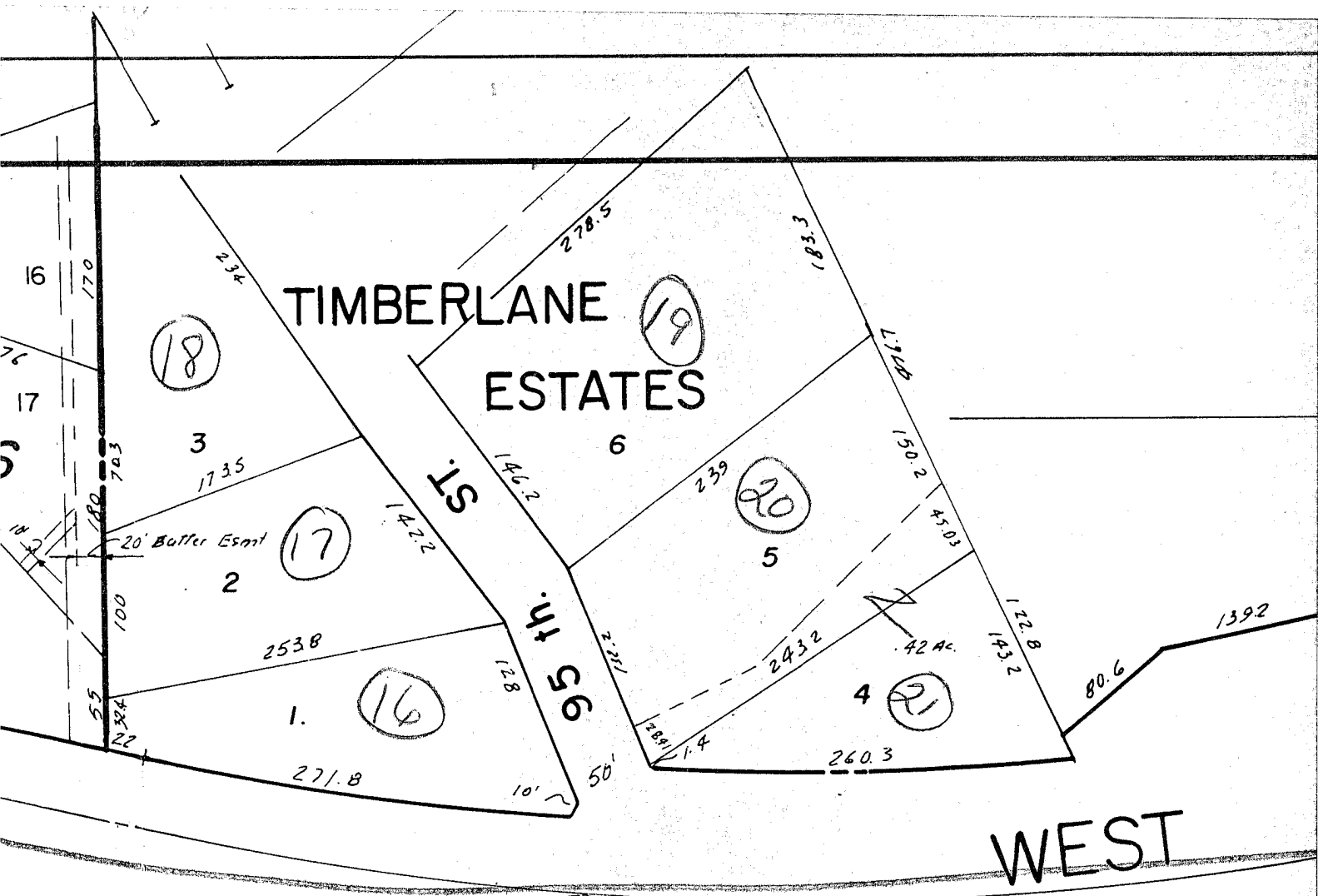
REPLAT

2 Ac.

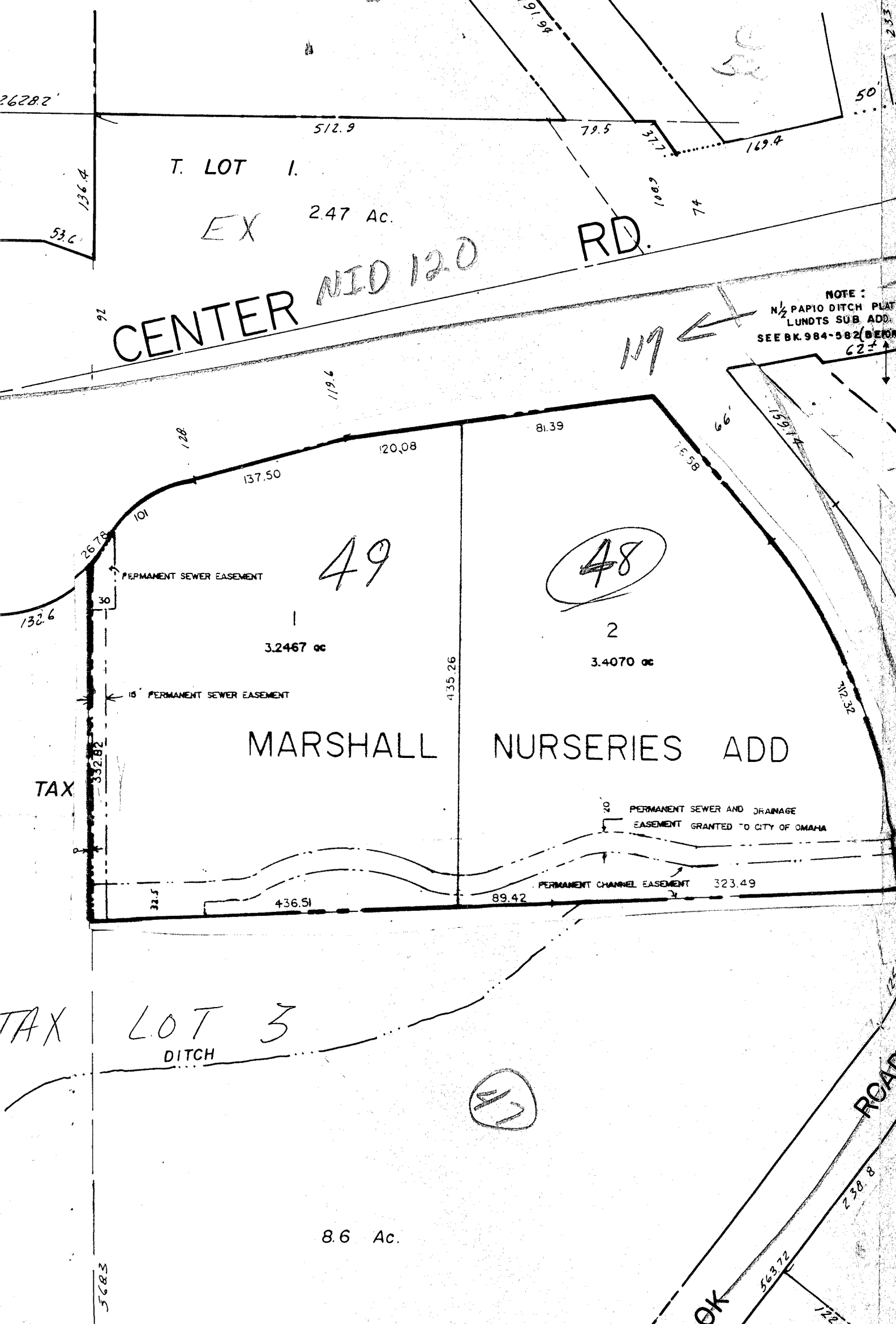
1 Ac.

Note: scale is off due to survey  
Error made on Lot 5 Mayberrys  
Dimensions 342 Correct





756



CENTER MID 120 RD.

T. LOT 1.  
EX 2.47 Ac.

NOTE:  
N 1/2 PAPIO DITCH PLATT  
LUNDT'S SUB ADD.  
SEE BK. 984-582 (BEFORE  
62 ±)

49

48

MARSHALL NURSERIES ADD

LOT 3  
DITCH

47

8.6 Ac.

TAX

TAX

5683

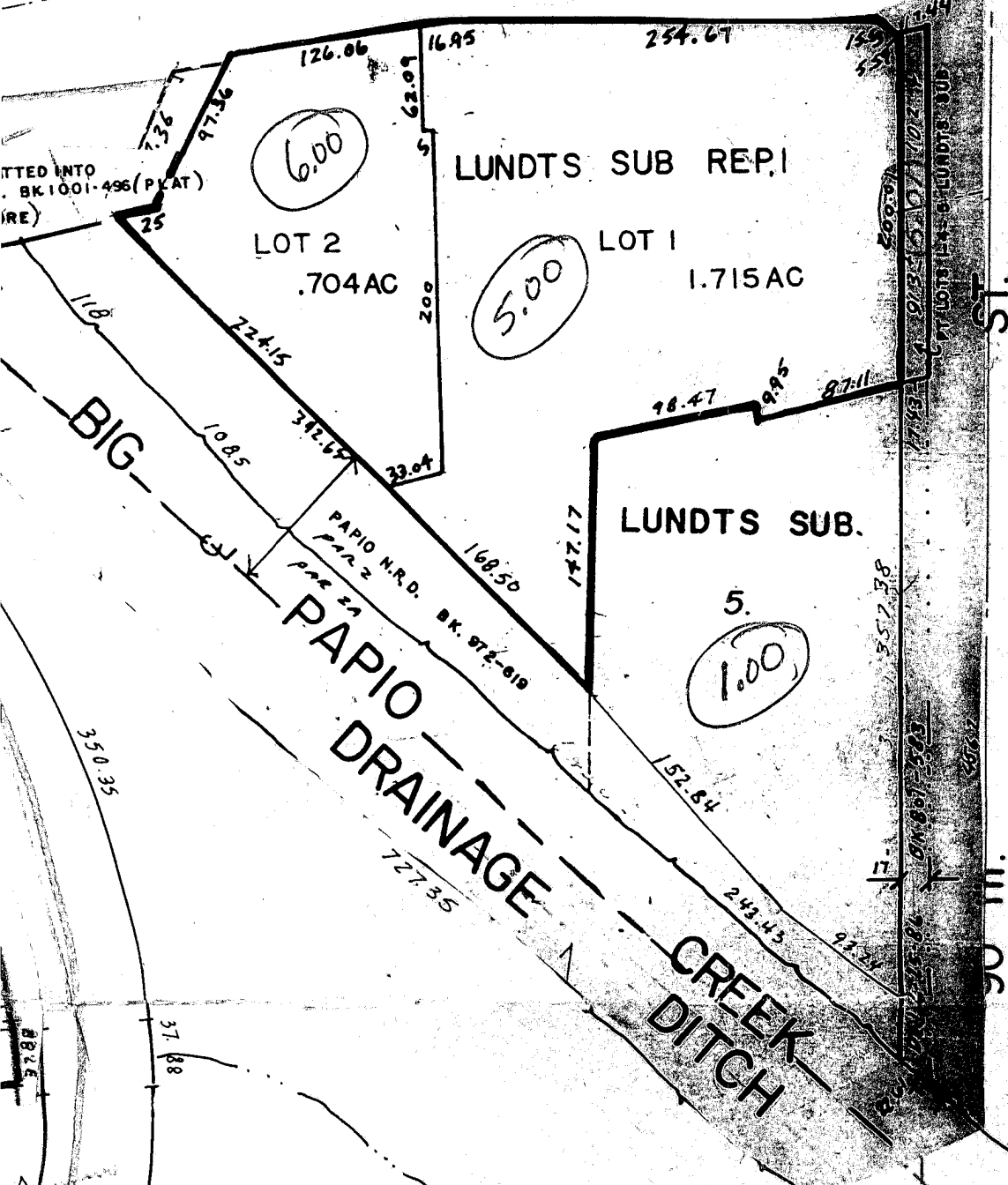
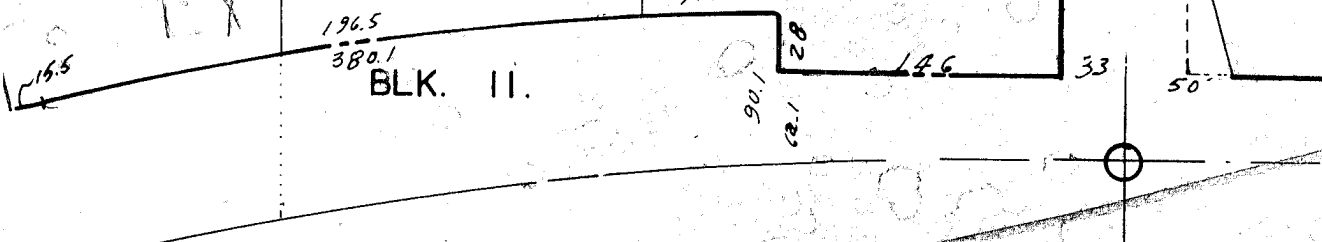
OK

ROAD

754

SOUTHWEST VILLAGE REPLAT

57.  
56.

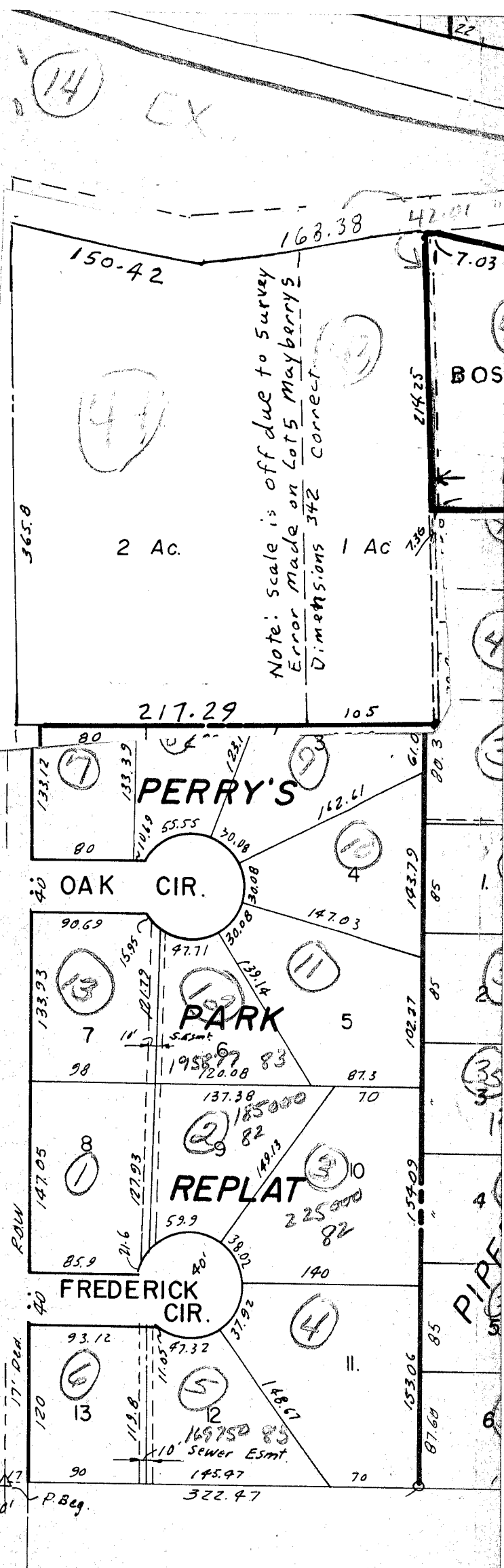


753

865

ST.

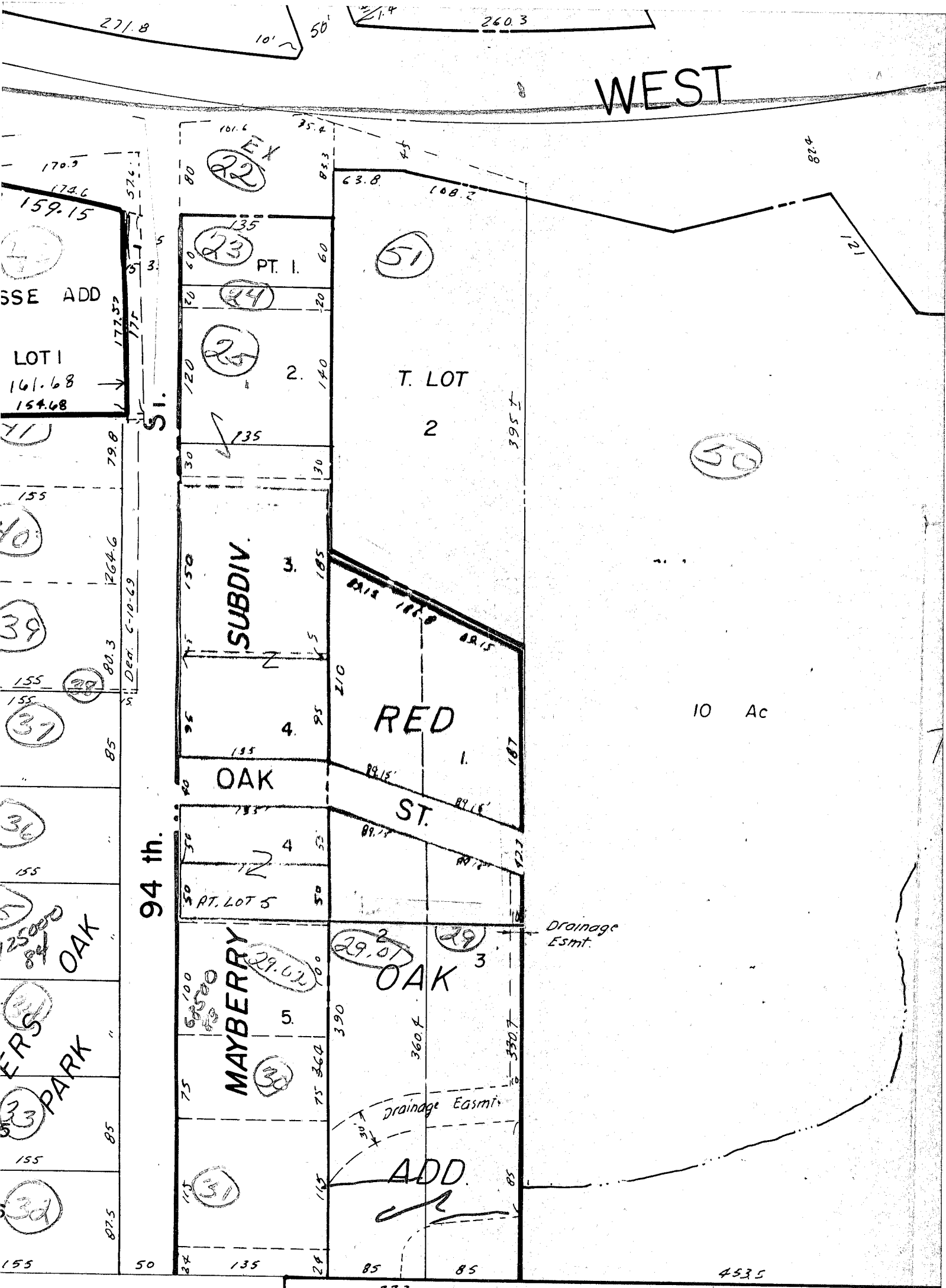
96 th.



271.8

260.3

# WEST



SSE ADD  
LOT I  
161.68  
154.68

94 th.

SUBDIV.

T. LOT  
2

(50)

10 Ac

RED

ST.

OAK

OAK

MAYBERRY

ADD.

OAK

PARK

(39)

EX  
(22)

(51)

(32)

(31)

(30)

(39)

(37)

(36)

(35)

(34)

(33)

(32)

(24)

(25)

(26)

(27)

(28)

(29)

(30)

(31)

(32)

(33)

(34)

(35)

(36)

(37)

(38)

(39)

Drainage Esmt.

Drainage Esmt.

170.5  
174.6  
159.15

172.52  
177

79.8

155

155

155

155

155

155

155

155

155

155

155

155

155

155

155

155

155

155

155

155

155

155

155

155

155

155

155

177

172.52

177

177

177

177

177

177

177

177

177

177

177

177

177

177

177

177

177

177

177

177

177

177

177

177

177

177

177

177

177

172.52

177

177

177

177

177

177

177

177

177

177

177

177

177

177

177

177

177

177

177

177

177

177

177

177

177

177

177

177

177

172.52

177

177

177

177

177

177

177

177

177

177

177

177

177

177

177

177

177

177

177

177

177

177

177

177

177

177

177

177

177

172.52

177

177

177

177

177

177

177

177

177

177

177

177

177

177

177

177

177

177

177

177

177

177

177

177

177

177

177

177

177

172.52

177

177

177

177

177

177

177

177

177

177

177

177

177

177

177

177

177

177

177

177

177

177

177

177

177

177

177

177

177

172.52

177

177

177

177

177

177

177

177

177

177

177

177

177

177

177

177

177

177

177

177

177

177

177

177

177

177

177

177

177

172.52

177

177

177

177

177

177

177

177

177

177

177

177

177

177

177

177

177

177

177

177

177

177

177

177

177

177

177

177

177

172.52

177

177

177

177

177

177

177

177

177

177

177

177

177

177

177

177

177

177

177

177

177

177

177

177

177

177

177

177

177

172.52

177

177

177

177

177

177

177

177

177

177

177

177

177

177

177

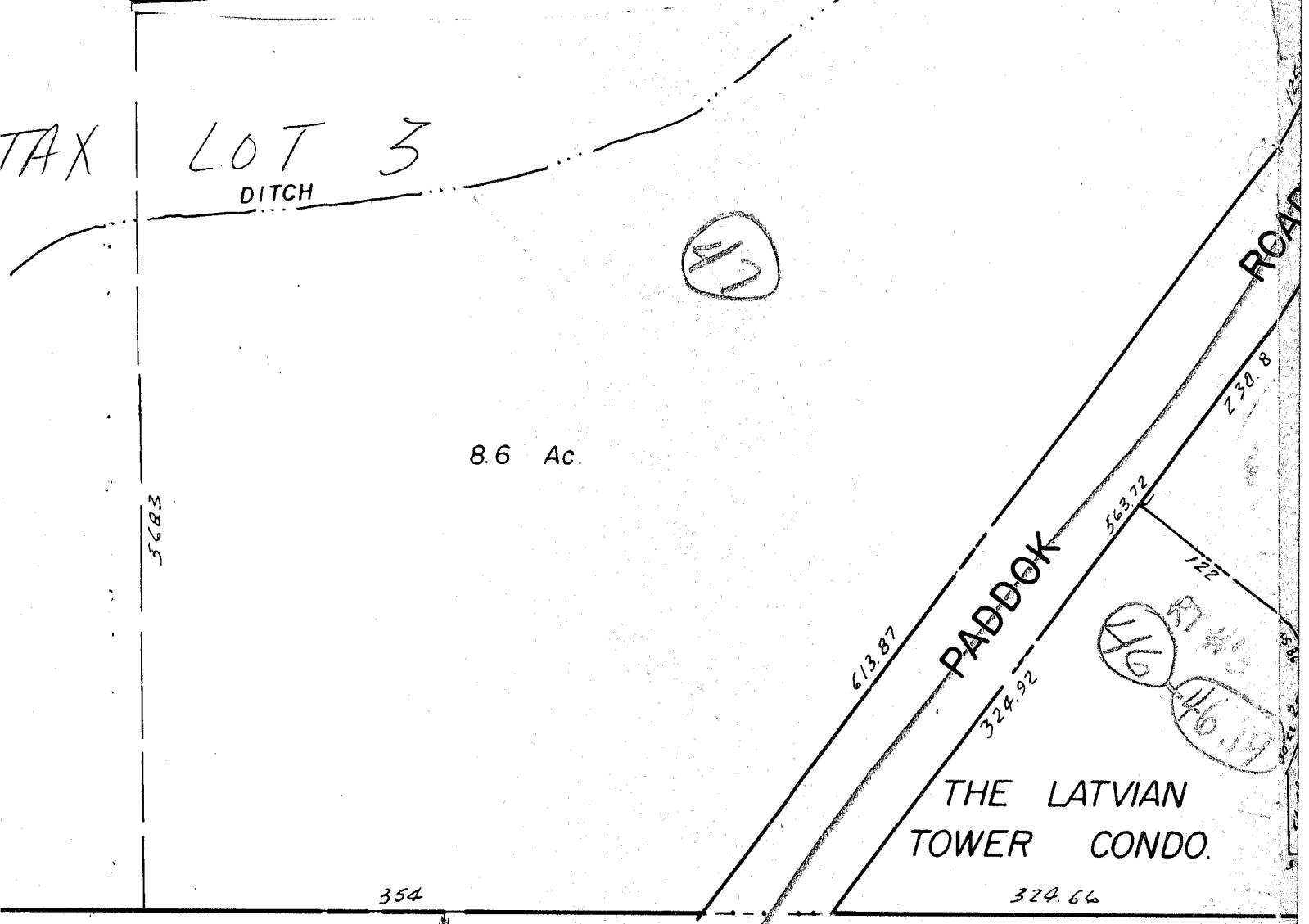
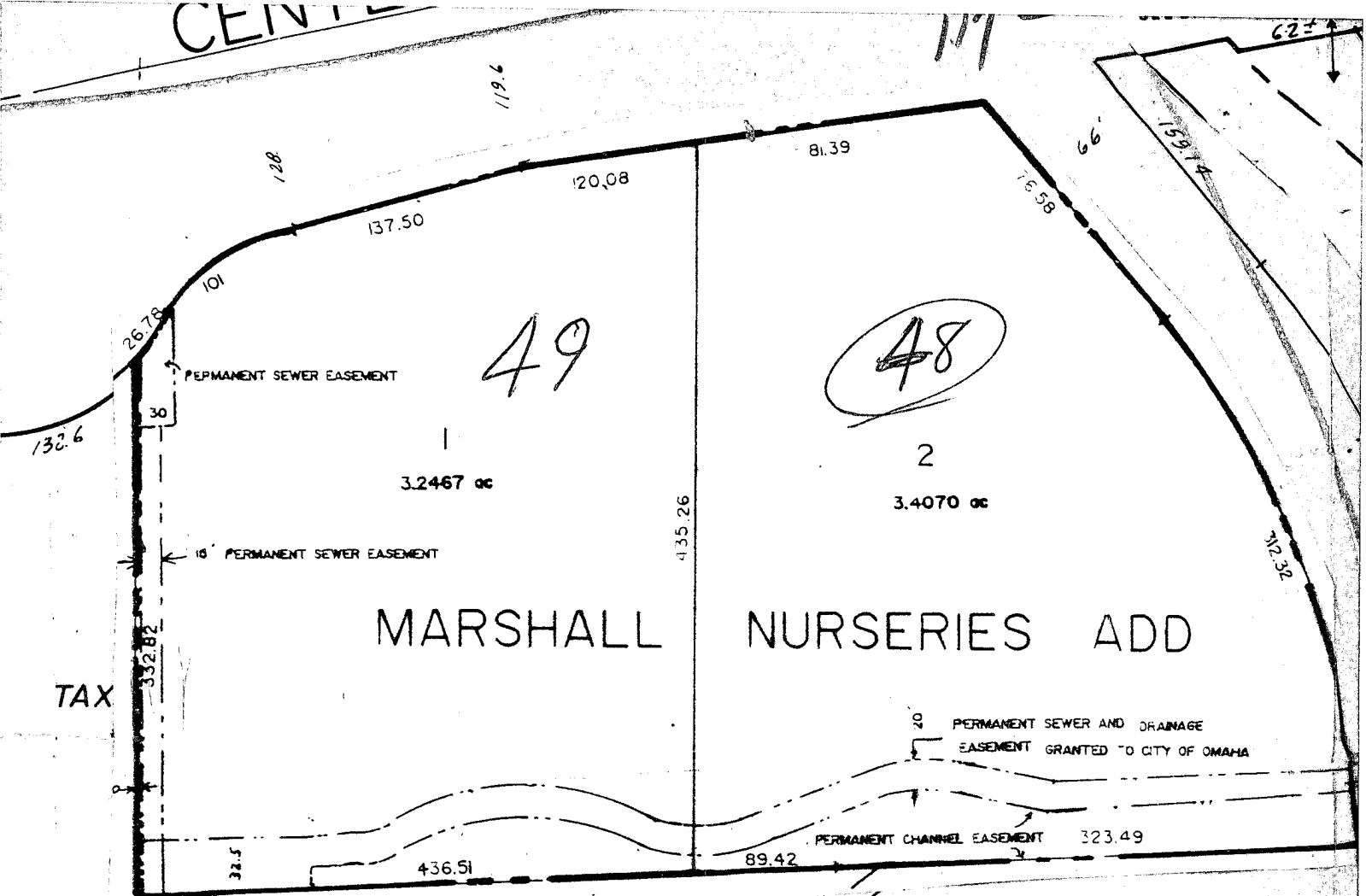
177

177

177

177

CENTRE



LOT 2  
.704 AC

LOT 1  
1.715 AC

5.00

5.  
1.00

150

753

N 1/2 NW 1/4 SEC 34-15-12

