

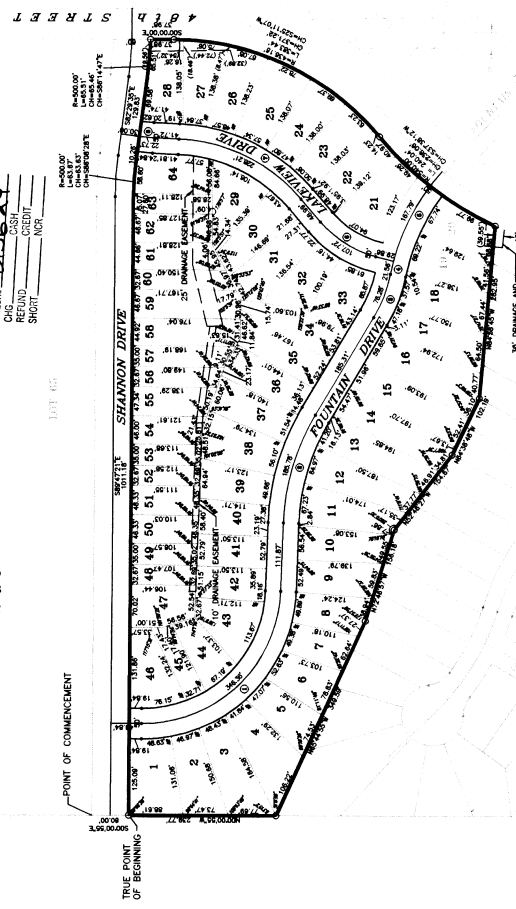
2004-18771

LAKEWOOD VILLAGES REPLAT 7

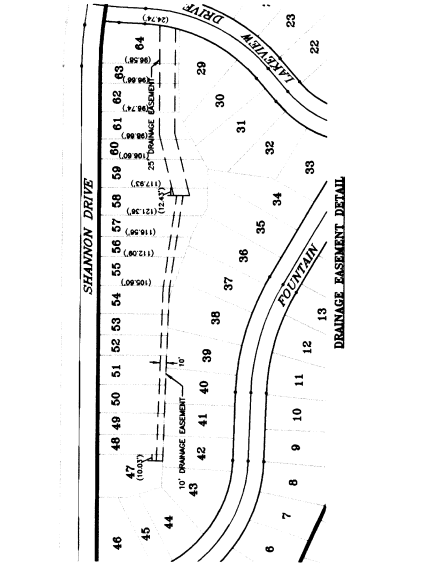
LOTS 1-64, LAKEWOOD VILLAGES REPLAT 7, BEING A REPLAT OF LOTS 1-64, OF LAKEWOOD VILLAGES REPLAT 2, LOCATED IN SECTION 31, TOWNSHIP 14 NORTH, RANGE 13 EAST OF THE 6TH P.M., SARY COUNTY, NEBRASKA.

Plat for Record **5-21-2004** **LA 152**
Submitted & Recorded **5-21-2004** **18771**
Sary County, Nebraska

VERIFIED BY **DE**
PROOF **79.00**
FEES \$ **DL56.34**
CASH **79.00**
CREDIT _____
SHORT _____
NOR _____



LOT #	AREA (SQ. FT.)	LOT #	AREA (SQ. FT.)
1	9977.20	31	7184.49
2	9977.20	32	7184.49
3	9977.20	33	7184.49
4	10387.71	34	7725.51
5	7142.09	35	7550.22
6	8268.32	36	8062.23
7	8268.32	37	8062.23
8	8268.32	38	8062.23
9	8268.32	39	8062.23
10	7297.63	40	6221.84
11	7297.63	41	5961.98
12	7297.63	42	5961.98
13	7297.63	43	5961.98
14	9900.37	44	5972.21
15	10112.53	45	6119.18
16	10112.53	46	6058.37
17	12627.04	47	3441.95
18	8943.95	48	3780.78
19	8148.71	49	5063.97
20	7032.85	50	5358.50
21	9112.41	51	3359.42
22	7900.37	52	5358.12
23	7814.19	53	6157.79
24	8327.10	54	5358.12
25	8327.10	55	5358.12
26	7854.48	56	7854.48
27	7788.34	57	8151.08
28	8158.42	58	8158.42
29	8158.42	59	8158.42
30	7567.49	60	5989.21
31	8068.32	61	4178.62
32	8792.45	62	8152.50



CURVE	INCHES	ARC LENGTH	CHORD LENGTH	DELTA ANGLE
C1	225.00'	346.46'	313.16'	88°11'56"
C2	375.00'	180.78'	183.89'	28°23'08"
C3	375.00'	21.96'	21.96'	2°52'25"
C4	333.89'	21.96'	21.96'	2°52'25"
C5	375.00'	167.79'	166.23'	27°09'56"
C6	375.00'	228.31'	221.72'	47°52'51"
C7	275.00'	228.31'	221.72'	47°52'51"
C8	288.72'	22.73'	22.72'	4°58'47"

- NOTES
1. ALL DISTANCES ARE SHOWN IN DECIMAL FEET.
 2. ALL DISTANCES SHOWN ALONG CURVES ARE CHORD DISTANCES.
 3. ALL ANGLES ARE 90° UNLESS OTHERWISE NOTED.
 4. ALL SIDE LOT LINES ON CURVED STREETS ARE RADIAL UNLESS OTHERWISE NOTED. (N.P.)
 5. DIMENSIONS REFER TO DIMENSIONS.

LEGEND

○ - FOUND PIN - 5/14/04 REBAR

GENERAL NOTES

1. THIS PLAT IS SUBJECT TO THE PLAT OF LAKEWOOD VILLAGES REPLAT 2, BEING A REPLAT OF LOTS 1-64, OF LAKEWOOD VILLAGES REPLAT 7, BEING A REPLAT OF LOTS 1-64, OF LAKEWOOD VILLAGES REPLAT 2, LOCATED IN SECTION 31, TOWNSHIP 14 NORTH, RANGE 13 EAST OF THE 6TH P.M., SARY COUNTY, NEBRASKA.

APPROVAL OF SARY COUNTY SURVEYOR

I HEREBY APPROVE THIS PLAT OF LAKEWOOD VILLAGES REPLAT 7 (LOTS 1 - 64 INCLUSIVE), THIS 13TH DAY OF MAY, 2004.

Sary County Surveyor

APPROVAL OF PUBLIC WORKS DIRECTOR

I HEREBY APPROVE THIS PLAT OF LAKEWOOD VILLAGES REPLAT 7 (LOTS 1 - 64 INCLUSIVE), THIS 13TH DAY OF MAY, 2004.

Public Works Director

APPROVAL OF CITY ENGINEER

I HEREBY APPROVE THIS PLAT OF LAKEWOOD VILLAGES REPLAT 7 (LOTS 1 - 64 INCLUSIVE), THIS 13TH DAY OF MAY, 2004.

City Engineer

APPROVAL OF TREASURER

I HEREBY APPROVE THIS PLAT OF LAKEWOOD VILLAGES REPLAT 7 (LOTS 1 - 64 INCLUSIVE), THIS 13TH DAY OF MAY, 2004.

Treasurer

APPROVAL OF EXAMINER/DIRECTOR

I HEREBY APPROVE THIS PLAT OF LAKEWOOD VILLAGES REPLAT 7 (LOTS 1 - 64 INCLUSIVE), THIS 13TH DAY OF MAY, 2004.

Examiner/Director

APPROVAL OF PLAT

I HEREBY APPROVE THIS PLAT OF LAKEWOOD VILLAGES REPLAT 7 (LOTS 1 - 64 INCLUSIVE), THIS 13TH DAY OF MAY, 2004.

Plat

APPROVAL OF ARCHITECT

I HEREBY APPROVE THIS PLAT OF LAKEWOOD VILLAGES REPLAT 7 (LOTS 1 - 64 INCLUSIVE), THIS 13TH DAY OF MAY, 2004.

Architect

APPROVAL OF ENGINEER

I HEREBY APPROVE THIS PLAT OF LAKEWOOD VILLAGES REPLAT 7 (LOTS 1 - 64 INCLUSIVE), THIS 13TH DAY OF MAY, 2004.

Engineer

APPROVAL OF SURVEYOR

I HEREBY APPROVE THIS PLAT OF LAKEWOOD VILLAGES REPLAT 7 (LOTS 1 - 64 INCLUSIVE), THIS 13TH DAY OF MAY, 2004.

Surveyor

APPROVAL OF RECORDING CLERK

I HEREBY APPROVE THIS PLAT OF LAKEWOOD VILLAGES REPLAT 7 (LOTS 1 - 64 INCLUSIVE), THIS 13TH DAY OF MAY, 2004.

Recording Clerk

APPROVAL OF NOTARY PUBLIC

I HEREBY APPROVE THIS PLAT OF LAKEWOOD VILLAGES REPLAT 7 (LOTS 1 - 64 INCLUSIVE), THIS 13TH DAY OF MAY, 2004.

Notary Public

APPROVAL OF COUNTY CLERK

I HEREBY APPROVE THIS PLAT OF LAKEWOOD VILLAGES REPLAT 7 (LOTS 1 - 64 INCLUSIVE), THIS 13TH DAY OF MAY, 2004.

County Clerk

APPROVAL OF COUNTY ATTORNEY

I HEREBY APPROVE THIS PLAT OF LAKEWOOD VILLAGES REPLAT 7 (LOTS 1 - 64 INCLUSIVE), THIS 13TH DAY OF MAY, 2004.

County Attorney

APPROVAL OF COUNTY COMMISSIONER

I HEREBY APPROVE THIS PLAT OF LAKEWOOD VILLAGES REPLAT 7 (LOTS 1 - 64 INCLUSIVE), THIS 13TH DAY OF MAY, 2004.

County Commissioner

ASSOCIATES INC.
ENGINEERING ARCHITECTURE SURVEYING
Council Bluffs omaha

LAKEWOOD VILLAGES REPLAT 7
REPLAT OF LOTS 1-64, OF LAKEWOOD VILLAGES REPLAT 2, LOCATED IN SECTION 31, TOWNSHIP 14 NORTH, RANGE 13 EAST OF THE 6TH P.M., SARY COUNTY, NEBRASKA.

STATE OF NEBRASKA
COUNTY OF SARY

STATE OF NEBRASKA
COUNTY OF SARY

STATE OF NEBRASKA
COUNTY OF SARY

STATE OF NEBRASKA
COUNTY OF SARY

STATE OF NEBRASKA
COUNTY OF SARY

STATE OF NEBRASKA
COUNTY OF SARY

STATE OF NEBRASKA
COUNTY OF SARY

STATE OF NEBRASKA
COUNTY OF SARY

LAKEWOOD VILLAGES REPLAT 7
REPLAT OF LOTS 1-64, OF LAKEWOOD VILLAGES REPLAT 2, LOCATED IN SECTION 31, TOWNSHIP 14 NORTH, RANGE 13 EAST OF THE 6TH P.M., SARY COUNTY, NEBRASKA.

STATE OF NEBRASKA
COUNTY OF SARY

STATE OF NEBRASKA
COUNTY OF SARY

STATE OF NEBRASKA
COUNTY OF SARY

STATE OF NEBRASKA
COUNTY OF SARY

STATE OF NEBRASKA
COUNTY OF SARY

STATE OF NEBRASKA
COUNTY OF SARY

STATE OF NEBRASKA
COUNTY OF SARY

STATE OF NEBRASKA
COUNTY OF SARY

STATE OF NEBRASKA
COUNTY OF SARY

LAKEWOOD VILLAGES REPLAT 7
REPLAT OF LOTS 1-64, OF LAKEWOOD VILLAGES REPLAT 2, LOCATED IN SECTION 31, TOWNSHIP 14 NORTH, RANGE 13 EAST OF THE 6TH P.M., SARY COUNTY, NEBRASKA.

STATE OF NEBRASKA
COUNTY OF SARY

STATE OF NEBRASKA
COUNTY OF SARY

STATE OF NEBRASKA
COUNTY OF SARY

STATE OF NEBRASKA
COUNTY OF SARY

STATE OF NEBRASKA
COUNTY OF SARY

STATE OF NEBRASKA
COUNTY OF SARY

STATE OF NEBRASKA
COUNTY OF SARY

STATE OF NEBRASKA
COUNTY OF SARY

STATE OF NEBRASKA
COUNTY OF SARY

LAKEWOOD VILLAGES REPLAT 7
REPLAT OF LOTS 1-64, OF LAKEWOOD VILLAGES REPLAT 2, LOCATED IN SECTION 31, TOWNSHIP 14 NORTH, RANGE 13 EAST OF THE 6TH P.M., SARY COUNTY, NEBRASKA.

STATE OF NEBRASKA
COUNTY OF SARY

STATE OF NEBRASKA
COUNTY OF SARY

STATE OF NEBRASKA
COUNTY OF SARY

STATE OF NEBRASKA
COUNTY OF SARY

STATE OF NEBRASKA
COUNTY OF SARY

STATE OF NEBRASKA
COUNTY OF SARY

STATE OF NEBRASKA
COUNTY OF SARY

STATE OF NEBRASKA
COUNTY OF SARY

STATE OF NEBRASKA
COUNTY OF SARY