

2003-12271

LAKEWOOD VILLAGES REPLAT 3

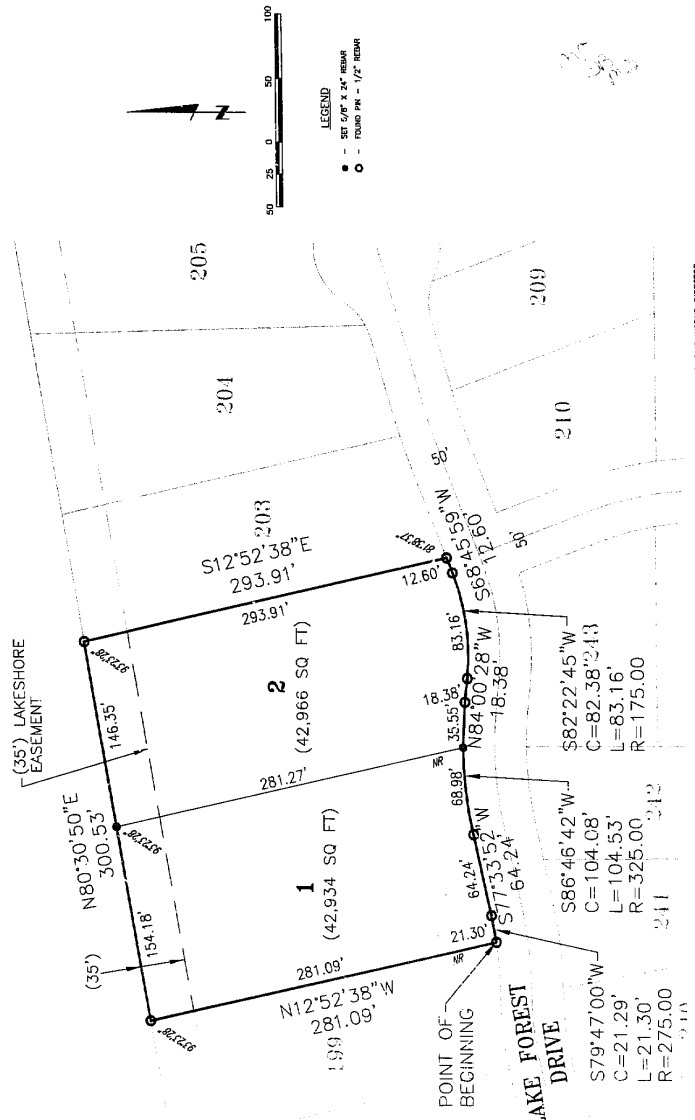
LOTS 1 & 2, LAKEWOOD VILLAGES REPLAT 3, BEING A REPLAT OF LOTS 200-202, OF LAKEWOOD VILLAGES, LOCATED IN SECTION 32, TOWNSHIP 14 NORTH, RANGE 13 EAST OF THE 6TH P.M., SARYPY COUNTY, NEBRASKA.

March 19, 2003 2:15:01 PM
2003 12271
Sarypy County, Nebraska

Gaurishankar
Verify *AK*
D.E. *R*
Proof Fee \$ *1750*
Cash Chg
15525



OUTLOT 1



- NOTES
1. ALL DISTANCES ARE SHOWN IN DECIMAL FEET.
 2. ALL DISTANCES SHOWN ALONG CURVES ARE ARC LENGTHS.
 3. ALL ANGLES ARE SHOWN UNLESS OTHERWISE NOTED.
 4. ALL CURVED LINES ON CURVED STRAIGHT ARE SHOWN UNLESS OTHERWISE NOTED.
 5. DISTANCES AND ANGLES SHOWN IN ITALICS REFER TO Easements.

APPROVAL OF PUBLIC WORKS DIRECTOR
Pat Bennett
March 17, 2003

APPROVAL OF CITY ENGINEER
Ronald Bennett
March 17, 2003

APPROVAL OF PUBLIC WORKS DIRECTOR
Ronald Bennett
March 17, 2003

COUNTY TREASURER'S CERTIFICATE
I HEREBY APPROVE THE PART OF LAKEWOOD VILLAGES REPLAT 3 (Lots 1 & 2) HEREIN, THE 16th day of March, 2003.

APPROVAL OF PLANNING DIRECTOR
James Assenberry
March 17, 2003

JAMES ASSENBERY, Planning Director
PAID. TREASURER'S CERTIFICATION IS ONLY VALID UNTIL DECEMBER 31, 2003.

APPROVAL OF PUBLIC WORKS DIRECTOR
Pat Bennett
March 17, 2003

LAND SURVEYOR'S CERTIFICATE
I HEREBY CERTIFY THAT I have made a boundary survey of the subdivision herein and that I am a duly licensed and qualified land surveyor under the laws of the State of Nebraska. I have made a careful study of the plat and the same is correct and true to the original survey. I have also made a careful study of the plat and the same is correct and true to the original survey. I have also made a careful study of the plat and the same is correct and true to the original survey. I have also made a careful study of the plat and the same is correct and true to the original survey.

Sarypy County
March 19, 2003 2:15:01 PM

OWNER: Lakewood Villages, LLC
By: *James M. White*
General Partner
By: *James M. White*
General Partner
By: *James M. White*
General Partner

APPROVED: *James M. White*
General Partner
By: *James M. White*
General Partner
By: *James M. White*
General Partner

APPROVAL OF PUBLIC WORKS DIRECTOR
Pat Bennett
March 17, 2003

APPROVAL OF CITY ENGINEER
Ronald Bennett
March 17, 2003

APPROVAL OF PUBLIC WORKS DIRECTOR
Ronald Bennett
March 17, 2003

APPROVAL OF PLANNING DIRECTOR
James Assenberry
March 17, 2003

JAMES ASSENBERY, Planning Director
PAID. TREASURER'S CERTIFICATION IS ONLY VALID UNTIL DECEMBER 31, 2003.

APPROVAL OF PUBLIC WORKS DIRECTOR
Pat Bennett
March 17, 2003

APPROVAL OF CITY ENGINEER
Ronald Bennett
March 17, 2003

APPROVAL OF PUBLIC WORKS DIRECTOR
Ronald Bennett
March 17, 2003

APPROVAL OF PLANNING DIRECTOR
James Assenberry
March 17, 2003

JAMES ASSENBERY, Planning Director
PAID. TREASURER'S CERTIFICATION IS ONLY VALID UNTIL DECEMBER 31, 2003.

APPROVAL OF PUBLIC WORKS DIRECTOR
Pat Bennett
March 17, 2003

APPROVAL OF CITY ENGINEER
Ronald Bennett
March 17, 2003

APPROVAL OF PUBLIC WORKS DIRECTOR
Ronald Bennett
March 17, 2003

APPROVAL OF PLANNING DIRECTOR
James Assenberry
March 17, 2003

JAMES ASSENBERY, Planning Director
PAID. TREASURER'S CERTIFICATION IS ONLY VALID UNTIL DECEMBER 31, 2003.

APPROVAL OF PUBLIC WORKS DIRECTOR
Pat Bennett
March 17, 2003

APPROVAL OF CITY ENGINEER
Ronald Bennett
March 17, 2003

APPROVAL OF PUBLIC WORKS DIRECTOR
Ronald Bennett
March 17, 2003

APPROVAL OF PLANNING DIRECTOR
James Assenberry
March 17, 2003

JAMES ASSENBERY, Planning Director
PAID. TREASURER'S CERTIFICATION IS ONLY VALID UNTIL DECEMBER 31, 2003.

APPROVAL OF PUBLIC WORKS DIRECTOR
Pat Bennett
March 17, 2003

APPROVAL OF CITY ENGINEER
Ronald Bennett
March 17, 2003

APPROVAL OF PUBLIC WORKS DIRECTOR
Ronald Bennett
March 17, 2003

hgm ASSOCIATES INC. ENGINEERING ARCHITECTURE SURVEYING

Table with columns: DATE, REVISION, DRAWN, CHECKED, DESIGNED, DATE

PROJECT: LAKEWOOD VILLAGES REPLAT 3
SHEET: NP DODGE
FINAL PLAT

1 OF 1
71112

