

71-412

LAKELAND ESTATES THIRD PLATTING
A SUBDIVISION IN SECTION 13, T17N, R1E AND SECTION
18, T17N, R1E OF THE 6TH P.M., WASHINGTON COUNTY,
NEBRASKA

COUNTY TREASURER'S CERTIFICATE

THIS IS TO CERTIFY THAT I FIND NO REGULAR OR SPECIALS TAXES DUE OR UNPAID UPON THE LAND EMBRACED IN THIS PLAT AND DESCRIBED HEREON AS SHOWN BY THE RECORDS OF THIS OFFICE ON THIS 13 DAY OF December, 1971.

Heleana Dumm
WASHINGTON COUNTY TREASURER

BOARD OF SUPERVISORS APPROVAL

THIS PLAT OF "LAKELAND ESTATES THIRD PLATTING" AS SHOWN, WAS APPROVED AND ACCEPTED BY THE BOARD OF SUPERVISORS OF WASHINGTON COUNTY, NEBRASKA, THIS 13 DAY OF December, 1971.

ATTEST: *Robert H. Peterson*
WASHINGTON COUNTY CLERK

Paul A. Green
CHAIRMAN, WASHINGTON COUNTY BOARD OF SUPERVISORS

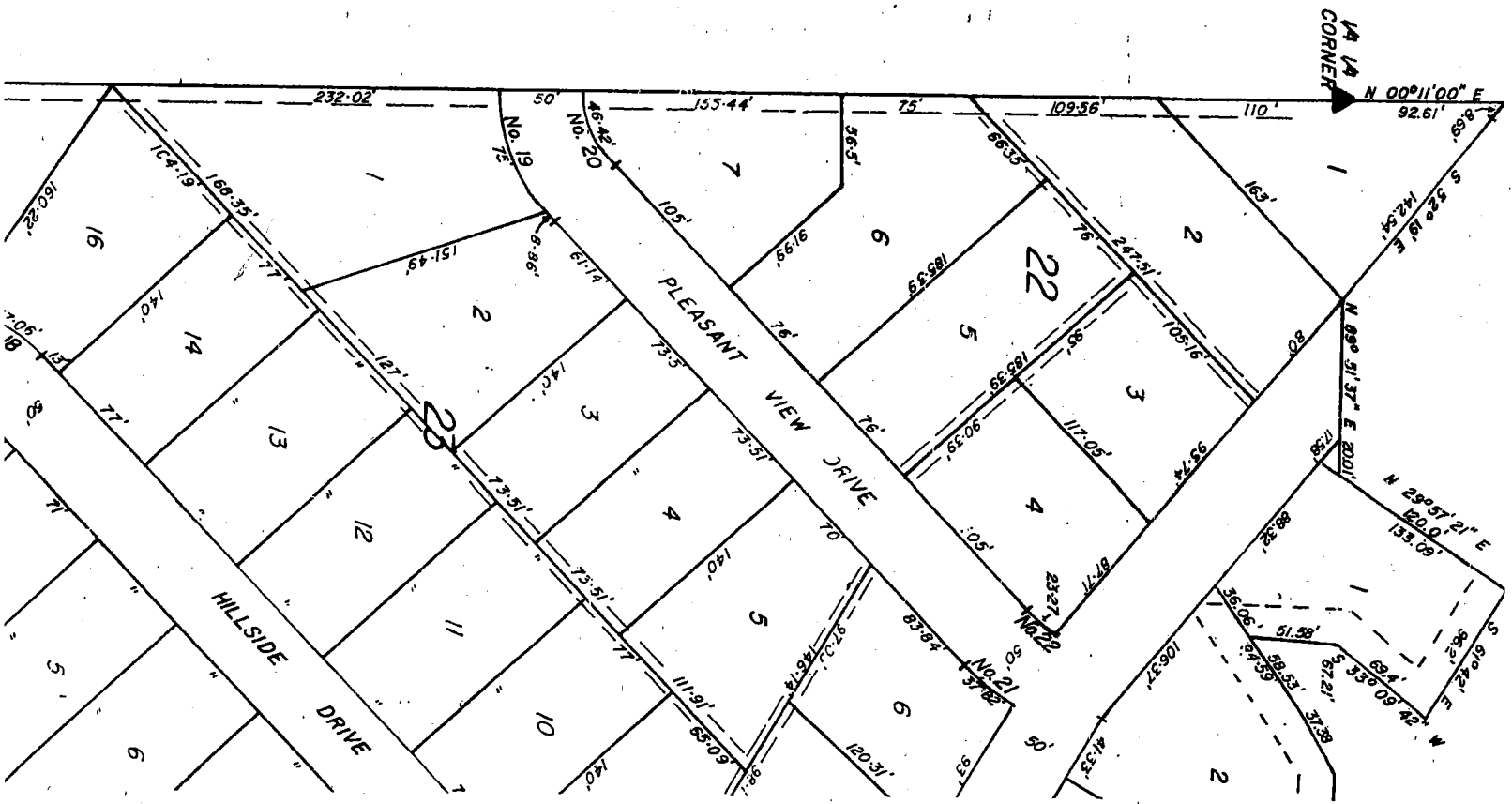
SURVEYOR'S CERTIFICATE

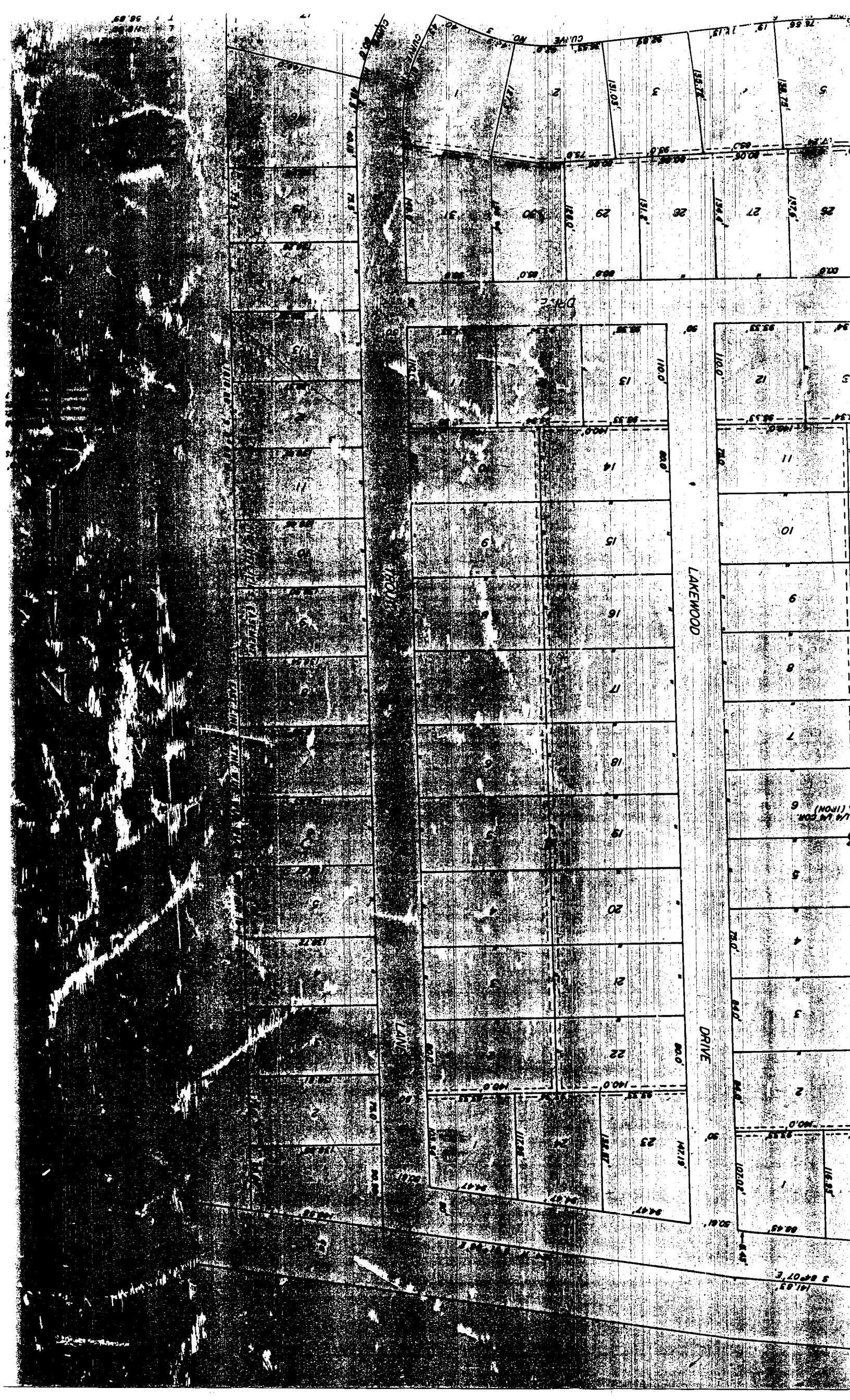
I HEREBY CERTIFY THAT THIS PLAT AND SURVEY WAS MADE BY ME AND THAT I AM A DULY REGISTERED LAND SURVEYOR UNDER THE LAWS OF THE STATE OF NEBRASKA.

Paul J. Smith, 1971
Stewart A. Smith
STEWART A. SMITH

LS-20
REG. NO.

WE, THE UNDERSIGNED PROPRIETORS, DO HEREBY CERTIFY THAT WE HAVE CAUSED THE LAND HERETOFORE DESCRIBED AS "LAKELAND ESTATES THIRD PLATTING" TO BE SURVEYED AND PLATTED INTO LOTS, BLOCKS AND STREETS. EASEMENTS ARE HEREBY GRANTED AS INDICATED ON THIS PLAT FOR THE CONSTRUCTION AND MAINTENANCE OF ALL PUBLIC UTILITIES.





OF THE NORTH WEST 1/4 OF THE SOUTH WEST 1/4 OF SECTION 10, TOWNSHIP 17 NORTH,
 RANGE 12 EAST OF THE 6th P.M., WASHINGTON COUNTY, NEBRASKA, AND
 CONTAINING 83.015 ACRES.

State of Nebraska }
 County of Washington } SS

Know all men by these presents that I, Blair, Nebraska
 do hereby certify that the following is a true and correct copy of the
 original of the same as the same appears in my office.
 A. R. M. 71. 3:18
 71
 12-2-71

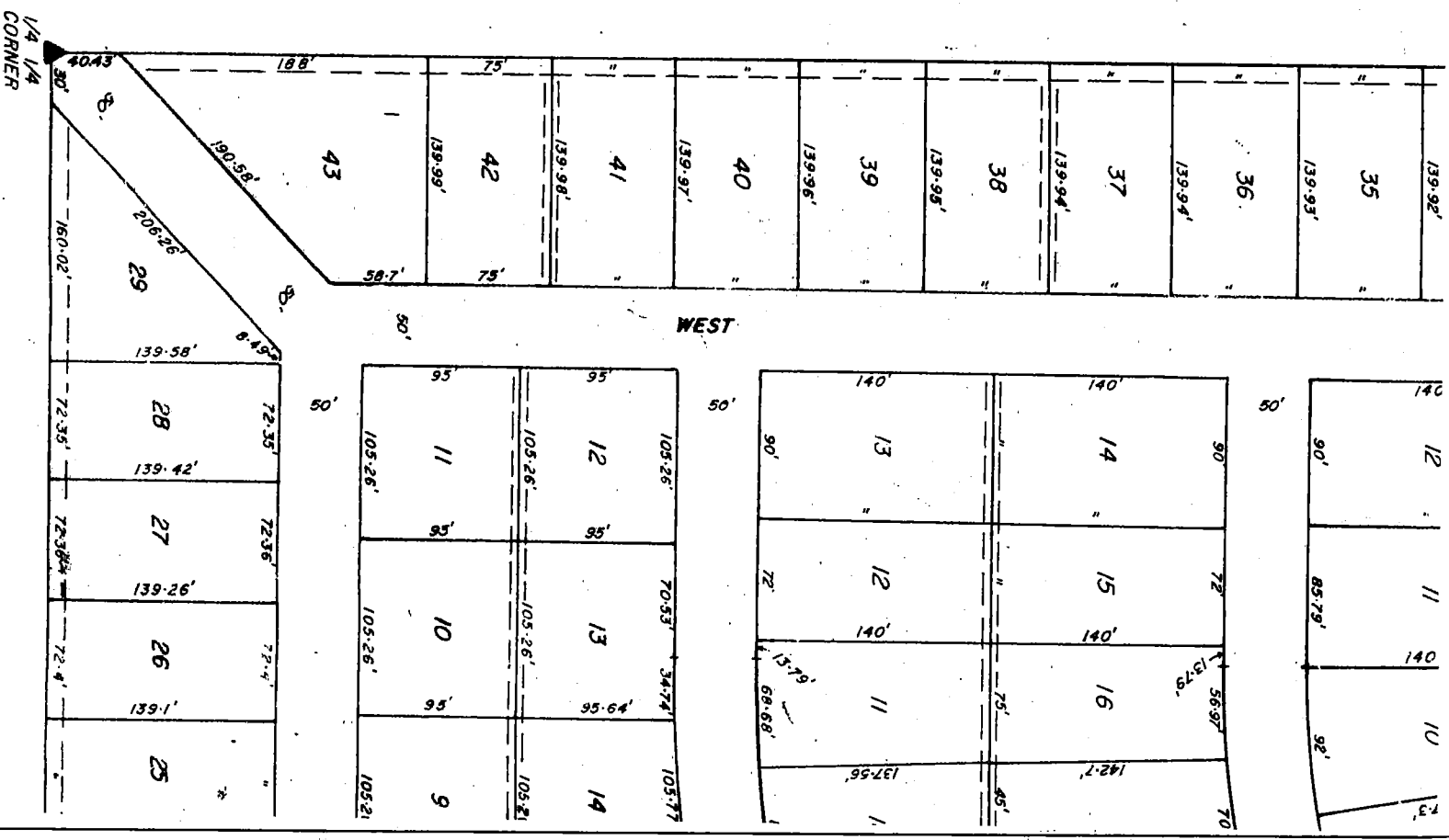
Blair, Nebraska



SCALE 1" = 100'
 DATE: NOVEMBER 15, 1971

NOTE:
 MINIMUM BUILDING SETBACKS:
 FRONT YARD = 25'
 REAR YARD = 25'
 SIDE YARD = 7'
 TYPICAL EASEMENT =
 POINTS SET OR FOUND =

PREPARED BY STEWART A. SMITH & ASSOCIATES
 BLAIR, NEBRASKA



THIRD PLATTING
 T17N, R11E AND SECTION
 7, 8, 9, 10, 11, 12, 13, 14, 15, 16, 17, 18, 19, 20,
 21, 22, 23, 24, 25, 26, 27, 28, 29, 30,
 T18N, R11E, WASHINGTON COUNTY,
 NEBRASKA

NO REGULAR OR SPECIALS TAXES DUE
 HEREON FOR THE YEAR ENDING
 DECEMBER 31, 1971.

David D. Davel
 COUNTY TREASURER

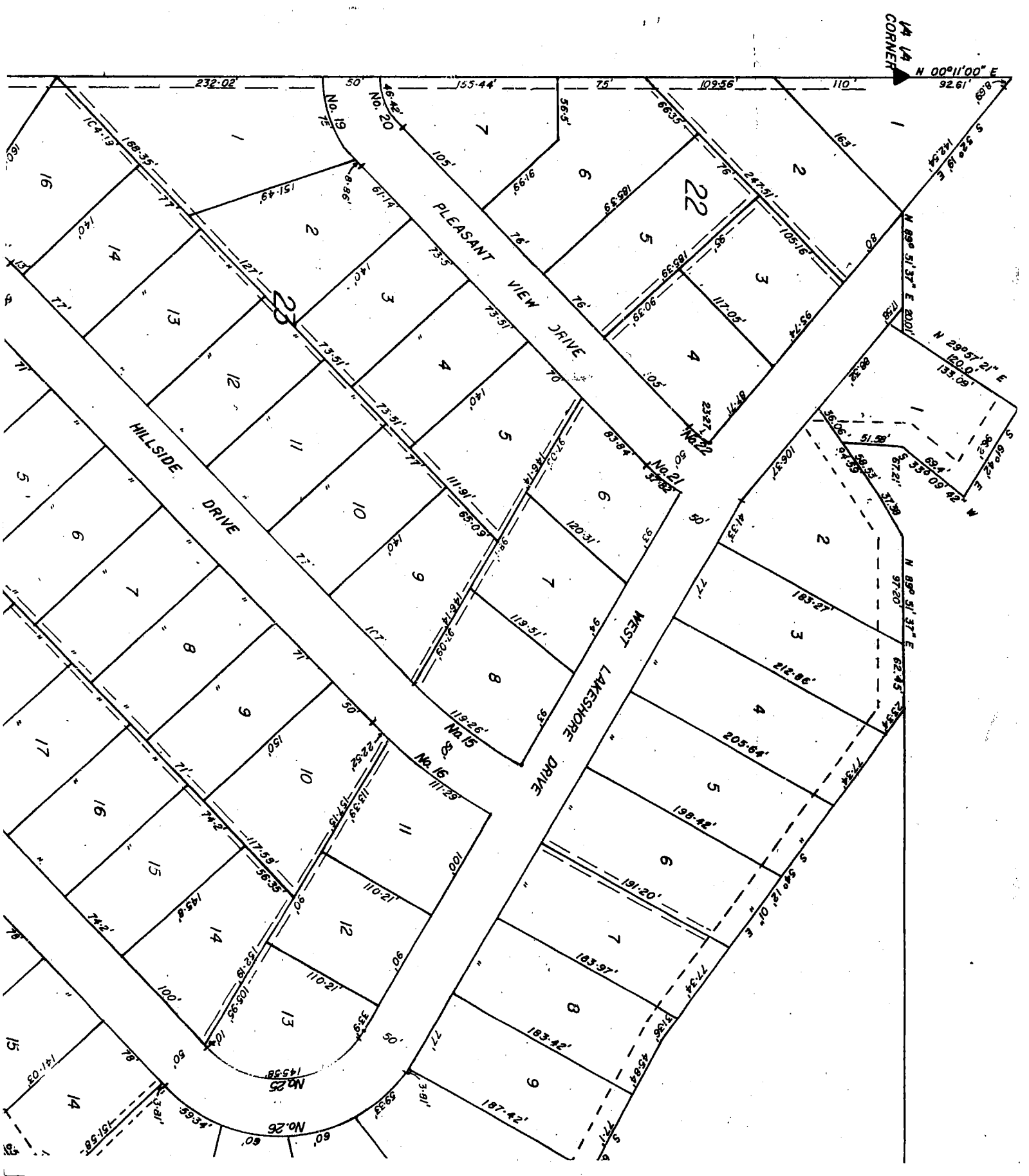
THIRD PLATTING AS SHOWN,
 WAS APPROVED BY THE BOARD OF
 SUPERVISORS OF WASHINGTON
 COUNTY ON December 15, 1971.

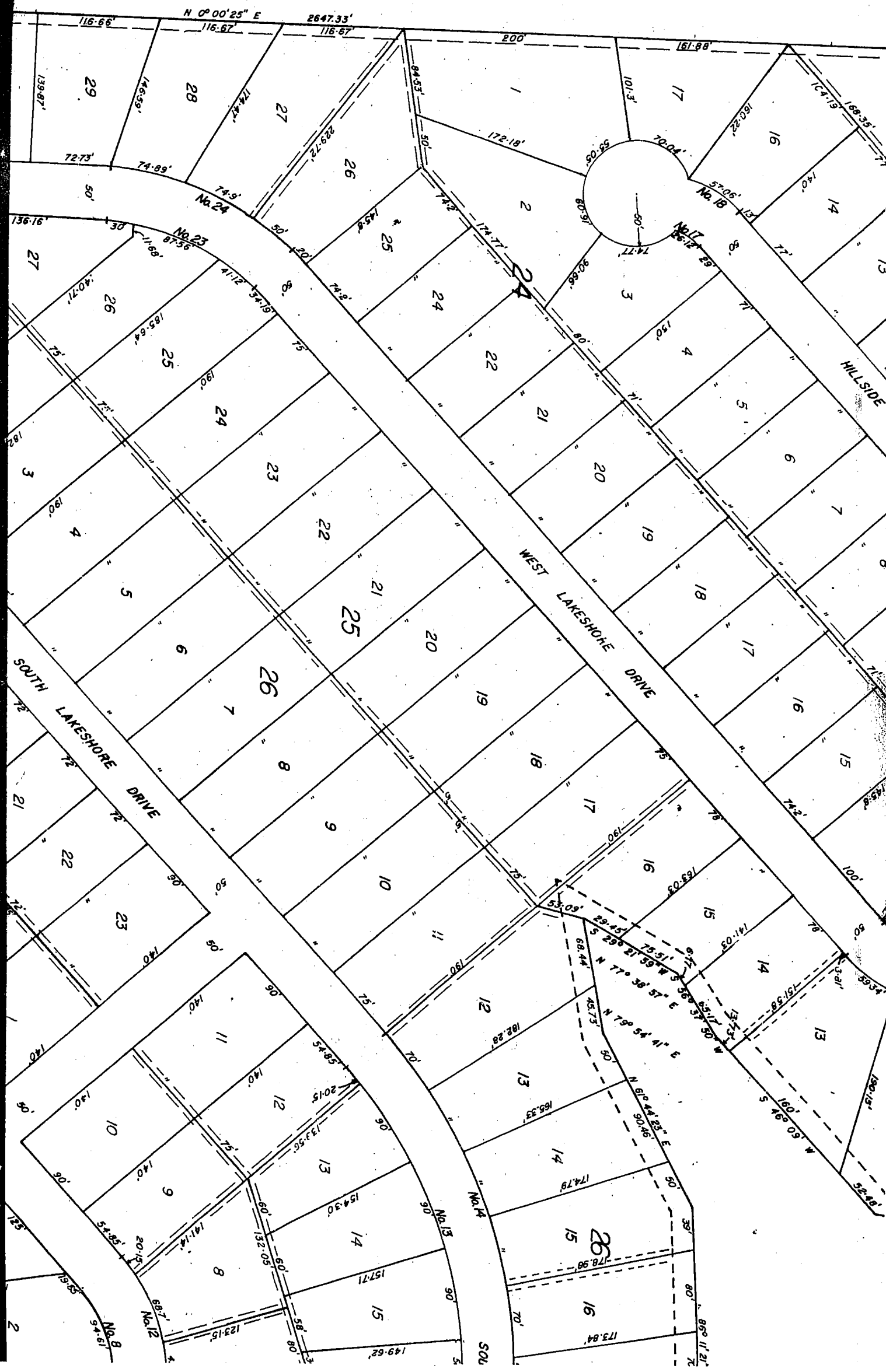
Paul H. O'Connell
 CHAIRMAN, WASHINGTON COUNTY
 BOARD OF SUPERVISORS

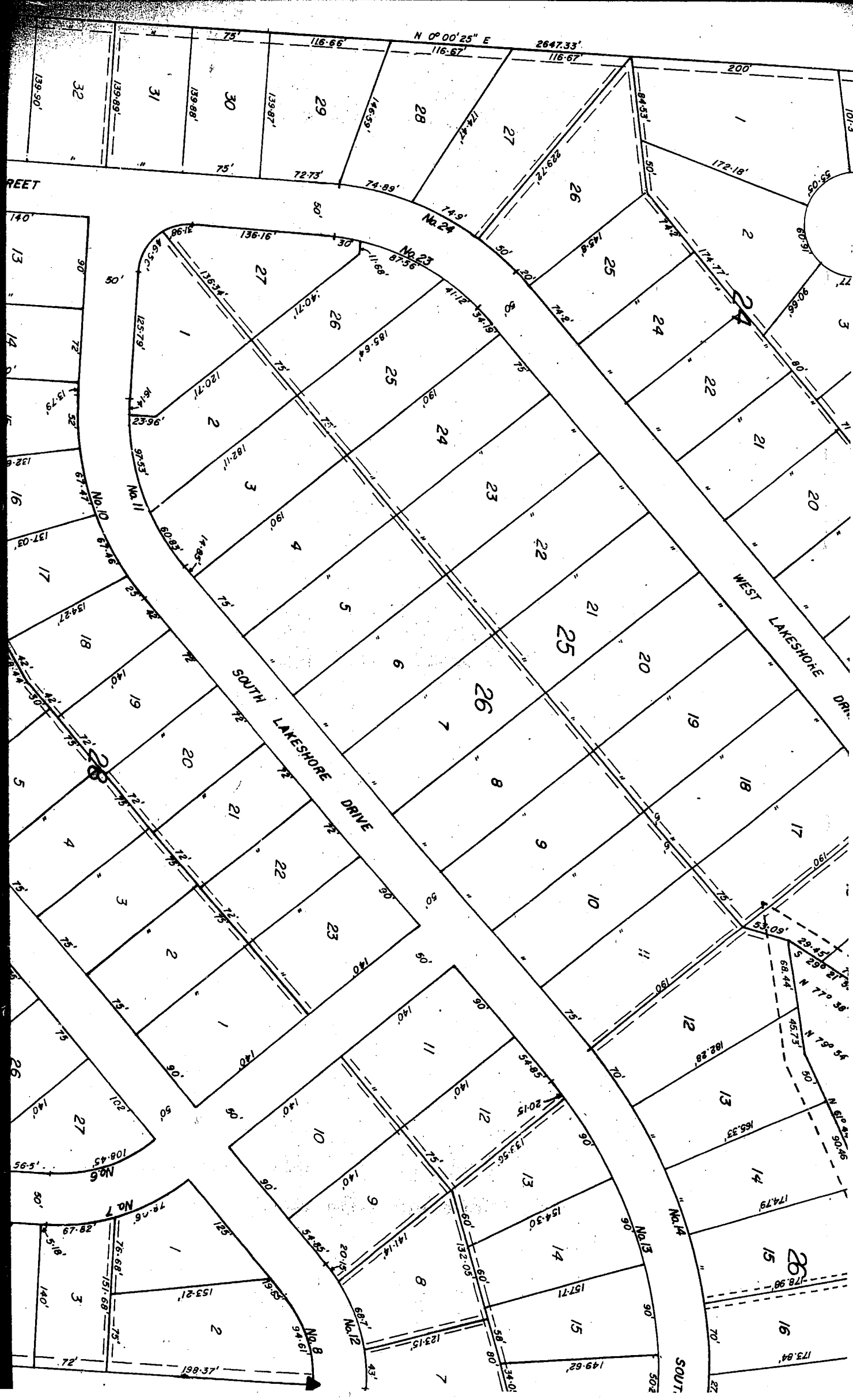
AND SURVEY WAS MADE BY ME AND
 IS CORRECT UNDER THE LAWS OF THE
 STATE OF NEBRASKA.

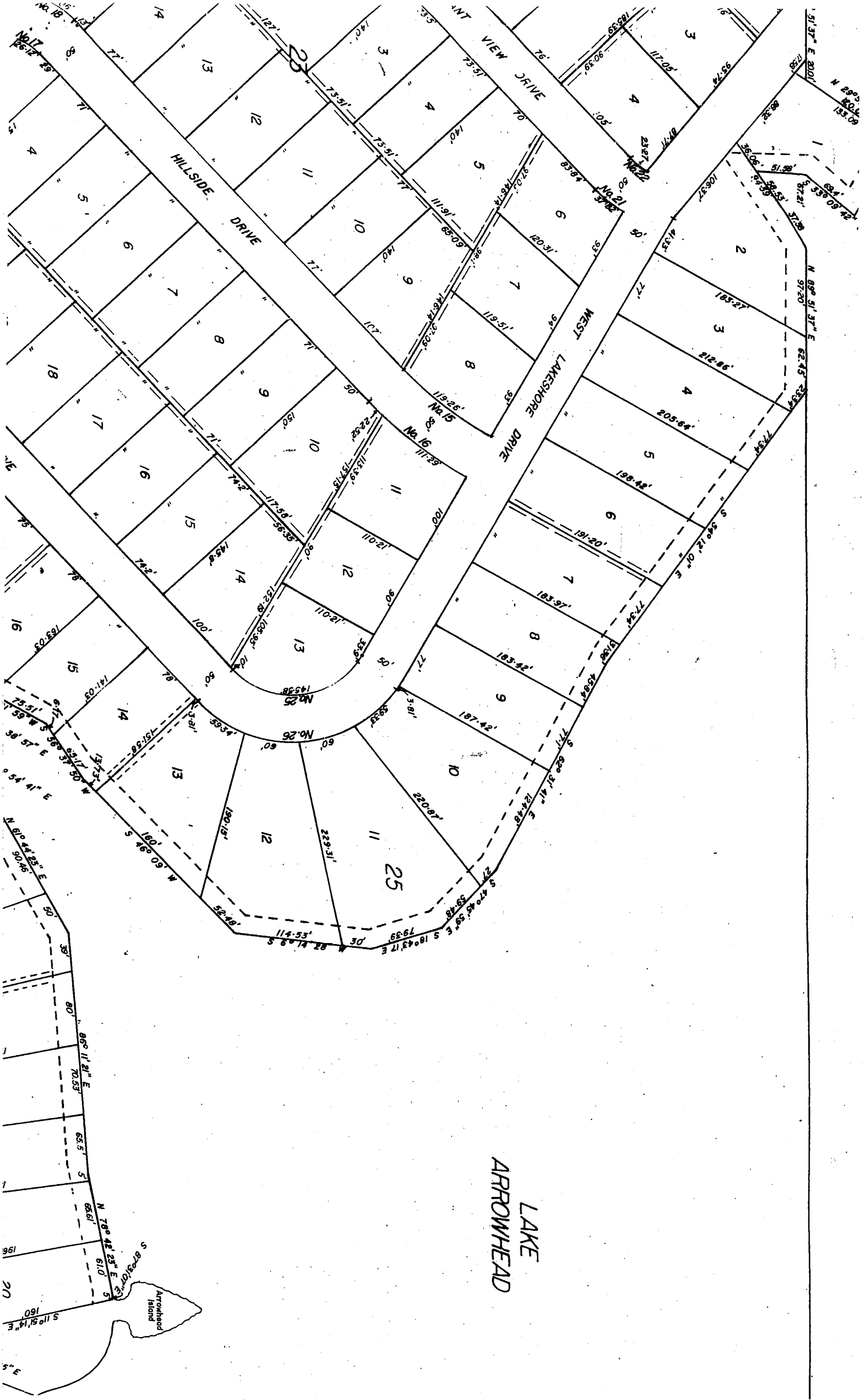
Edward A. Smith
 SURVEYOR

DO HEREBY CERTIFY THAT WE HAVE
 REVIEWED THE PLATTING AND
 APPROVED AS "LAKELAND ESTATES THIRD
 PLATTING" INTO LOTS, BLOCKS AND STREETS.
 AS INDICATED ON THIS PLAT FOR THE









LAKE
ARROWHEAD