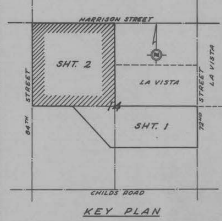
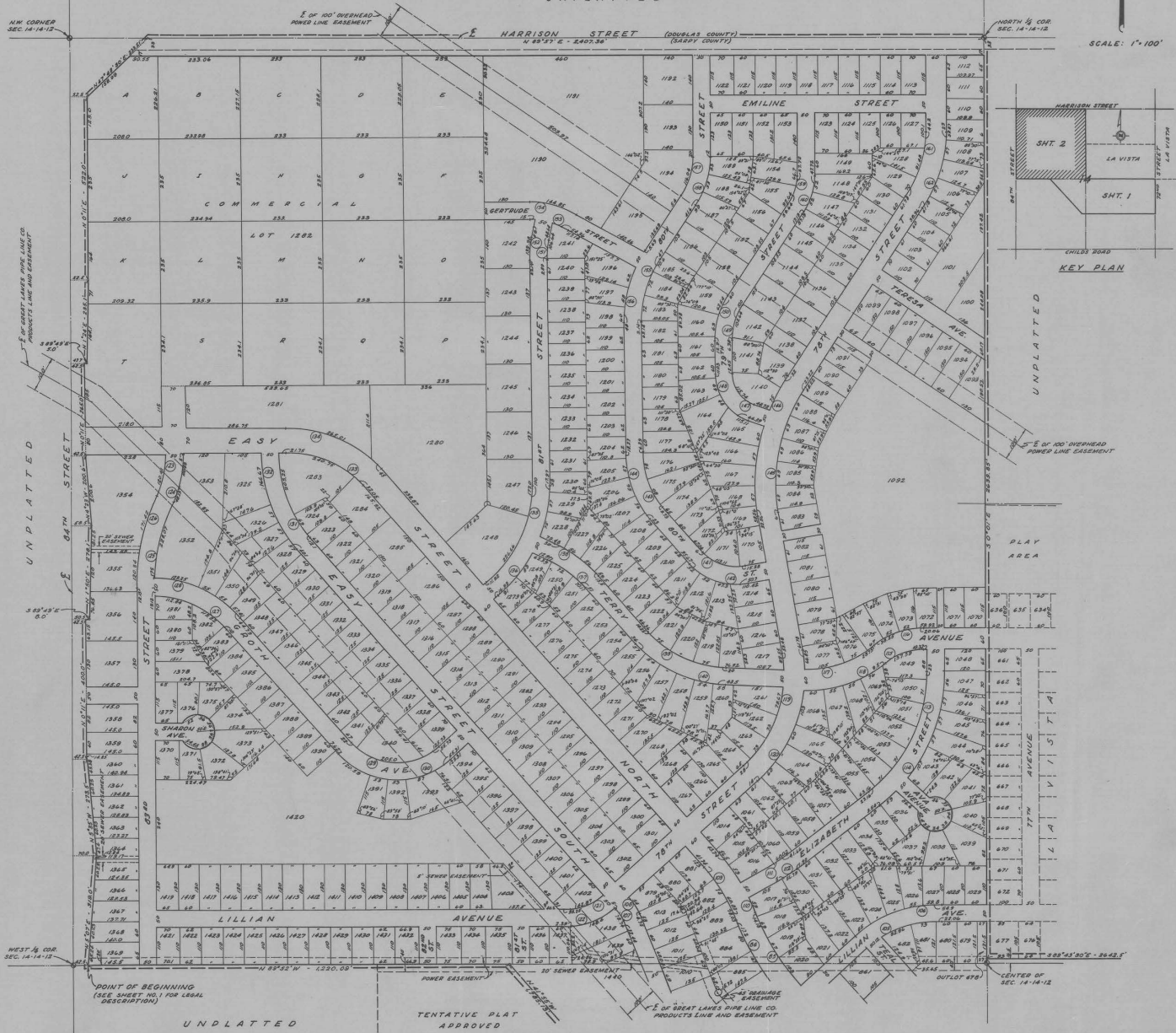


LA VISTA

A SUBDIVISION LOCATED IN THE NORTH 1/4
OF THE S.E. 1/4, THE S.W. 1/4 AND THE NW 1/4
OF SEC. 14, TOWNSHIP 14 NORTH, RANGE 13 EAST
OF THE 6TH 24TH, SARDY COUNTY, NEBRASKA

UNPLATTED



STATE OF NEBRASKA
SARDY COUNTY

Filed for record
July 30
A.D. 1910
Subdivision # 4
Plat # 7
S. S. Sardy, Clerk

POINT OF BEGINNING
(SEE SHEET NO. 1 FOR LEGAL
DESCRIPTION)

UNPLATTED

TENTATIVE PLAT
APPROVED

sh. 2

Sheet # 2
Page 7
BL. 4 pg. 7A