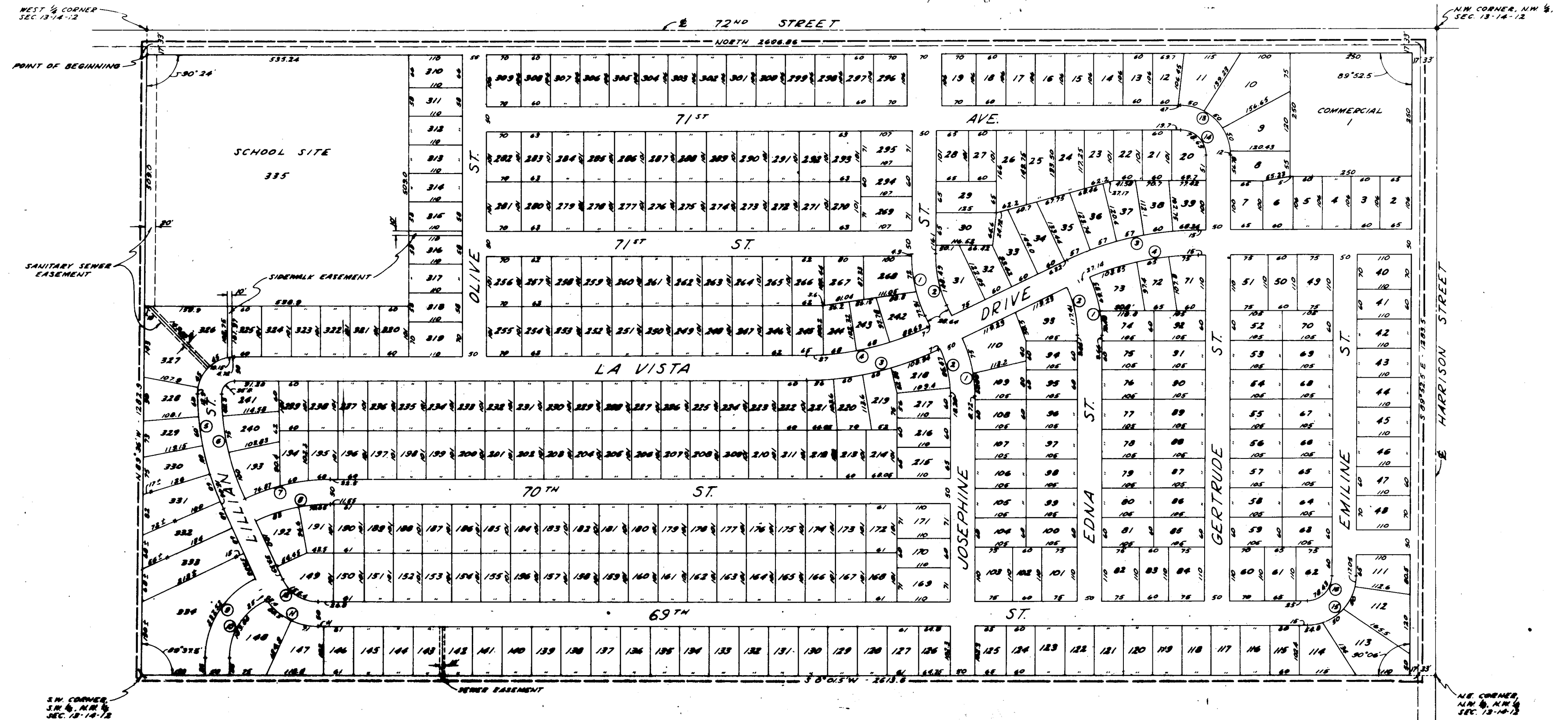


LA VISTA

A SUBDIVISION IN THE WEST HALF OF THE NW 1/4 SECTION 13, T-14-N, R-13-E OF THE 6TH P.M. SARPY COUNTY, NEBRASKA



SCALE: 1" = 100'



CURVE DATA

A	T	R	D	L
1 20°00'	84.18'	201.00'	84.18'	180.17'
2 20°00'	84.18'	201.00'	84.18'	180.17'
3 15°30'	101.51'	250.51'	101.51'	275.00'
4 15°30'	101.51'	250.51'	101.51'	275.00'
5 15°30'	101.51'	250.51'	101.51'	275.00'
6 15°30'	101.51'	250.51'	101.51'	275.00'
7 25°31'	88.57'	200.00'	88.57'	180.17'
8 25°31'	88.57'	200.00'	88.57'	180.17'
9 25°31'	88.57'	200.00'	88.57'	180.17'
10 25°31'	88.57'	200.00'	88.57'	180.17'
11 25°31'	88.57'	200.00'	88.57'	180.17'
12 25°31'	88.57'	200.00'	88.57'	180.17'
13 25°31'	88.57'	200.00'	88.57'	180.17'
14 25°31'	88.57'	200.00'	88.57'	180.17'
15 25°31'	88.57'	200.00'	88.57'	180.17'
16 25°31'	88.57'	200.00'	88.57'	180.17'
17 25°31'	88.57'	200.00'	88.57'	180.17'
18 25°31'	88.57'	200.00'	88.57'	180.17'
19 25°31'	88.57'	200.00'	88.57'	180.17'
20 25°31'	88.57'	200.00'	88.57'	180.17'
21 25°31'	88.57'	200.00'	88.57'	180.17'
22 25°31'	88.57'	200.00'	88.57'	180.17'
23 25°31'	88.57'	200.00'	88.57'	180.17'
24 25°31'	88.57'	200.00'	88.57'	180.17'
25 25°31'	88.57'	200.00'	88.57'	180.17'
26 25°31'	88.57'	200.00'	88.57'	180.17'
27 25°31'	88.57'	200.00'	88.57'	180.17'
28 25°31'	88.57'	200.00'	88.57'	180.17'
29 25°31'	88.57'	200.00'	88.57'	180.17'
30 25°31'	88.57'	200.00'	88.57'	180.17'
31 25°31'	88.57'	200.00'	88.57'	180.17'
32 25°31'	88.57'	200.00'	88.57'	180.17'
33 25°31'	88.57'	200.00'	88.57'	180.17'
34 25°31'	88.57'	200.00'	88.57'	180.17'
35 25°31'	88.57'	200.00'	88.57'	180.17'
36 25°31'	88.57'	200.00'	88.57'	180.17'
37 25°31'	88.57'	200.00'	88.57'	180.17'
38 25°31'	88.57'	200.00'	88.57'	180.17'
39 25°31'	88.57'	200.00'	88.57'	180.17'
40 25°31'	88.57'	200.00'	88.57'	180.17'
41 25°31'	88.57'	200.00'	88.57'	180.17'
42 25°31'	88.57'	200.00'	88.57'	180.17'
43 25°31'	88.57'	200.00'	88.57'	180.17'
44 25°31'	88.57'	200.00'	88.57'	180.17'
45 25°31'	88.57'	200.00'	88.57'	180.17'
46 25°31'	88.57'	200.00'	88.57'	180.17'
47 25°31'	88.57'	200.00'	88.57'	180.17'
48 25°31'	88.57'	200.00'	88.57'	180.17'
49 25°31'	88.57'	200.00'	88.57'	180.17'
50 25°31'	88.57'	200.00'	88.57'	180.17'
51 25°31'	88.57'	200.00'	88.57'	180.17'
52 25°31'	88.57'	200.00'	88.57'	180.17'
53 25°31'	88.57'	200.00'	88.57'	180.17'
54 25°31'	88.57'	200.00'	88.57'	180.17'
55 25°31'	88.57'	200.00'	88.57'	180.17'
56 25°31'	88.57'	200.00'	88.57'	180.17'
57 25°31'	88.57'	200.00'	88.57'	180.17'
58 25°31'	88.57'	200.00'	88.57'	180.17'
59 25°31'	88.57'	200.00'	88.57'	180.17'
60 25°31'	88.57'	200.00'	88.57'	180.17'
61 25°31'	88.57'	200.00'	88.57'	180.17'
62 25°31'	88.57'	200.00'	88.57'	180.17'
63 25°31'	88.57'	200.00'	88.57'	180.17'
64 25°31'	88.57'	200.00'	88.57'	180.17'
65 25°31'	88.57'	200.00'	88.57'	180.17'
66 25°31'	88.57'	200.00'	88.57'	180.17'
67 25°31'	88.57'	200.00'	88.57'	180.17'
68 25°31'	88.57'	200.00'	88.57'	180.17'
69 25°31'	88.57'	200.00'	88.57'	180.17'
70 25°31'	88.57'	200.00'	88.57'	180.17'
71 25°31'	88.57'	200.00'	88.57'	180.17'
72 25°31'	88.57'	200.00'	88.57'	180.17'
73 25°31'	88.57'	200.00'	88.57'	180.17'
74 25°31'	88.57'	200.00'	88.57'	180.17'
75 25°31'	88.57'	200.00'	88.57'	180.17'
76 25°31'	88.57'	200.00'	88.57'	180.17'
77 25°31'	88.57'	200.00'	88.57'	180.17'
78 25°31'	88.57'	200.00'	88.57'	180.17'
79 25°31'	88.57'	200.00'	88.57'	180.17'
80 25°31'	88.57'	200.00'	88.57'	180.17'
81 25°31'	88.57'	200.00'	88.57'	180.17'
82 25°31'	88.57'	200.00'	88.57'	180.17'
83 25°31'	88.57'	200.00'	88.57'	180.17'
84 25°31'	88.57'	200.00'	88.57'	180.17'
85 25°31'	88.57'	200.00'	88.57'	180.17'
86 25°31'	88.57'	200.00'	88.57'	180.17'
87 25°31'	88.57'	200.00'	88.57'	180.17'
88 25°31'	88.57'	200.00'	88.57'	180.17'
89 25°31'	88.57'	200.00'	88.57'	180.17'
90 25°31'	88.57'	200.00'	88.57'	180.17'
91 25°31'	88.57'	200.00'	88.57'	180.17'
92 25°31'	88.57'	200.00'	88.57'	180.17'
93 25°31'	88.57'	200.00'	88.57'	180.17'
94 25°31'	88.57'	200.00'	88.57'	180.17'
95 25°31'	88.57'	200.00'	88.57'	180.17'
96 25°31'	88.57'	200.00'	88.57'	180.17'
97 25°31'	88.57'	200.00'	88.57'	180.17'
98 25°31'	88.57'	200.00'	88.57'	180.17'
99 25°31'	88.57'	200.00'	88.57'	180.17'
100 25°31'	88.57'	200.00'	88.57'	180.17'

SURVEYOR'S CERTIFICATE

I HEREBY CERTIFY THAT I HAVE ACCURATELY SURVEYED AND STAKED SIX INCH PINE ALL CURVES OF ALL LOTS, STREETS, AVENUES, ANGLEPOINTS AND ENDS OF ALL CURVES IN LA VISTA, SAID ADDITION IS LOCATED IN THE WEST HALF OF THE NW 1/4 SECTION 13, TOWNSHIP 14 NORTH, RANGE 13 EAST OF THE 6TH PRINCIPAL MERIDIAN, SARPY COUNTY, NEBRASKA MORE PARTICULARLY DESCRIBED AS FOLLOWS:

BEGINSING AT A POINT 33' EAST OF THE WEST 1/4 CORNER OF SECTION 13-14-12; THE COURSE NORTH (ASSUMED BEARING) AND PARALLEL WITH THE WEST LINE OF THE NW 1/4 OF SAID SEC. 13 FOR A DISTANCE OF 2608.86; THENCE S 89° 58.0' E FOR A DISTANCE OF 1293.51; THENCE S 0° 01.0' W FOR A DISTANCE OF 2615.61; THENCE N 89° 36' 4" E FOR A DISTANCE OF 1282.0' TO THE POINT OF BEGINNING.

DATED: April 12, 1929
 E. W. WILLIAMS, SURVEYOR

DEDICATION

KNOW ALL MEN BY THESE PRESENTS, THAT DON H. WILLIAMS AND MAE WILLIAMS, HUSBAND AND WIFE, DECKER ENTERPRISES, INC. A NEBRASKA CORPORATION, DON DECKER, PRESIDENT, DONOR OF THE LA VISTA ADDITION AS SHOWN IN THE SURVEYOR'S CERTIFICATE AND MAP HEREBY CAUSE THE SAME TO BE REGISTERED INTO THE PUBLIC RECORDS OF SAID COUNTY, NEBRASKA, THE LOTS NUMBERED AS SHOWN, AND TO BE SUBJECT TO THE DEDICATION OF OUR PROPERTY AS SHOWN ON THIS MAP, AND TO BE SUBJECT TO THE PUBLIC RECORDS OF SAID COUNTY, NEBRASKA, THE LOTS NUMBERED AS SHOWN IN THE SURVEYOR'S CERTIFICATE AND MAP, IS HEREBY WITH FREE CONSENT AND IN WITNESS WHEREOF, WE HAVE SIGNED OUR NAMES THIS _____ DAY OF _____ 1929.

DON H. WILLIAMS
 MAE WILLIAMS
 DON DECKER, PRESIDENT
 DECKER ENTERPRISES, INC.

ACKNOWLEDGEMENT OF NOTARY

STATE OF NEBRASKA
 COUNTY OF DUNLAP

ON THIS _____ DAY OF APRIL, A.D. 1929, BEFORE ME, A HONORARY PUBLIC, DULY COMMISSIONED AND QUALIFIED IN AND FOR SAID COUNTY, PERSONALLY CAME DON H. WILLIAMS AND MAE WILLIAMS, HUSBAND AND WIFE, WHO ARE PERSONALLY KNOWN TO ME TO BE THE IDENTICAL PERSONS WHOSE NAMES ARE AFFIXED TO THE DEDICATION OF THIS PLAT AND THEY ACKNOWLEDGED THE RESPECTIVE SIGNATURES TO BE THEIR VOLUNTARY ACT AND DEED; AND FURTHER CAME DON DECKER, PRESIDENT OF DECKER ENTERPRISES, INC. A CORPORATION WHO IS PERSONALLY KNOWN TO BE THE IDENTICAL PERSON WHOSE NAME IS AFFIXED TO THE DEDICATION OF THIS PLAT AND HE ACKNOWLEDGED HIS SIGNATURE LIBERALLY TO BE HIS VOLUNTARY ACT AND DEED AS SUCH OFFICER AND THE VOLUNTARY ACT AND DEED OF SAID CORPORATION AND THE SEAL OF SAID CORPORATION HAS THEREON AFFIXED BY ITS AUTHORITY.

WITNESSED BY ME AND NOTORIAL SEAL AT DUNLAP, NEBRASKA, IN SAID COUNTY, THE DATE LAST AFORESAID.

Don Decker
 NOTARY PUBLIC

MY COMMISSION EXPIRES ON THE _____ DAY OF _____ 1929.

COUNTY TREASURER'S CERTIFICATE

THIS IS TO CERTIFY THAT I FIND NO REGULAR OR SPECIAL TAXES, DUE OR DELINQUENT AGAINST THE PROPERTY DESCRIBED IN THE SURVEYOR'S CERTIFICATE AND REFLECTED IN THIS PLAT AS SHOWN BY THE RECORDS OF THIS OFFICE.

DATE: April 12, 1929
 COUNTY TREASURER

(VACATED SEE PAGE 115 FOR REPLAT)



FILED 4-14-29