

RECORDED AS THE FIRST PLAT
 AS SHOWN ON THE PLAN, 1944
 BY THE STATE ENGINE.

S.W. 1/4 - 4-15-12

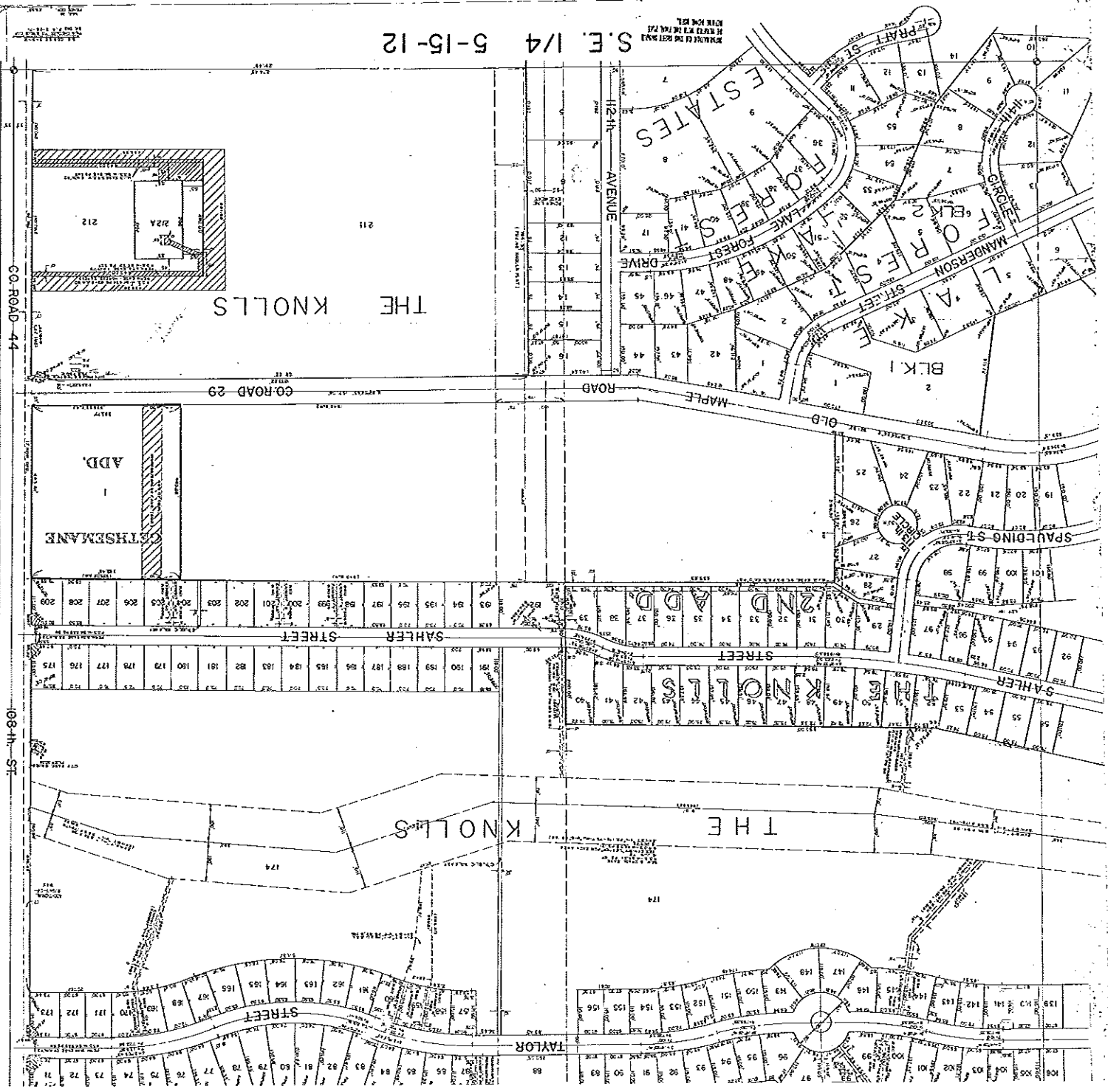
RECORDED AS THE FIRST PLAT
 AS SHOWN ON THE PLAN, 1944
 BY THE STATE ENGINE.

108 IN

44

INST # 680

S.E. 1/4 5-15-12



1/4 SECTION 5-15-12
 PLAT NO. 12345
 1912

REPRODUCED FROM THE
 ORIGINAL RECORD IN THE
 PUBLIC RECORDS OFFICE

