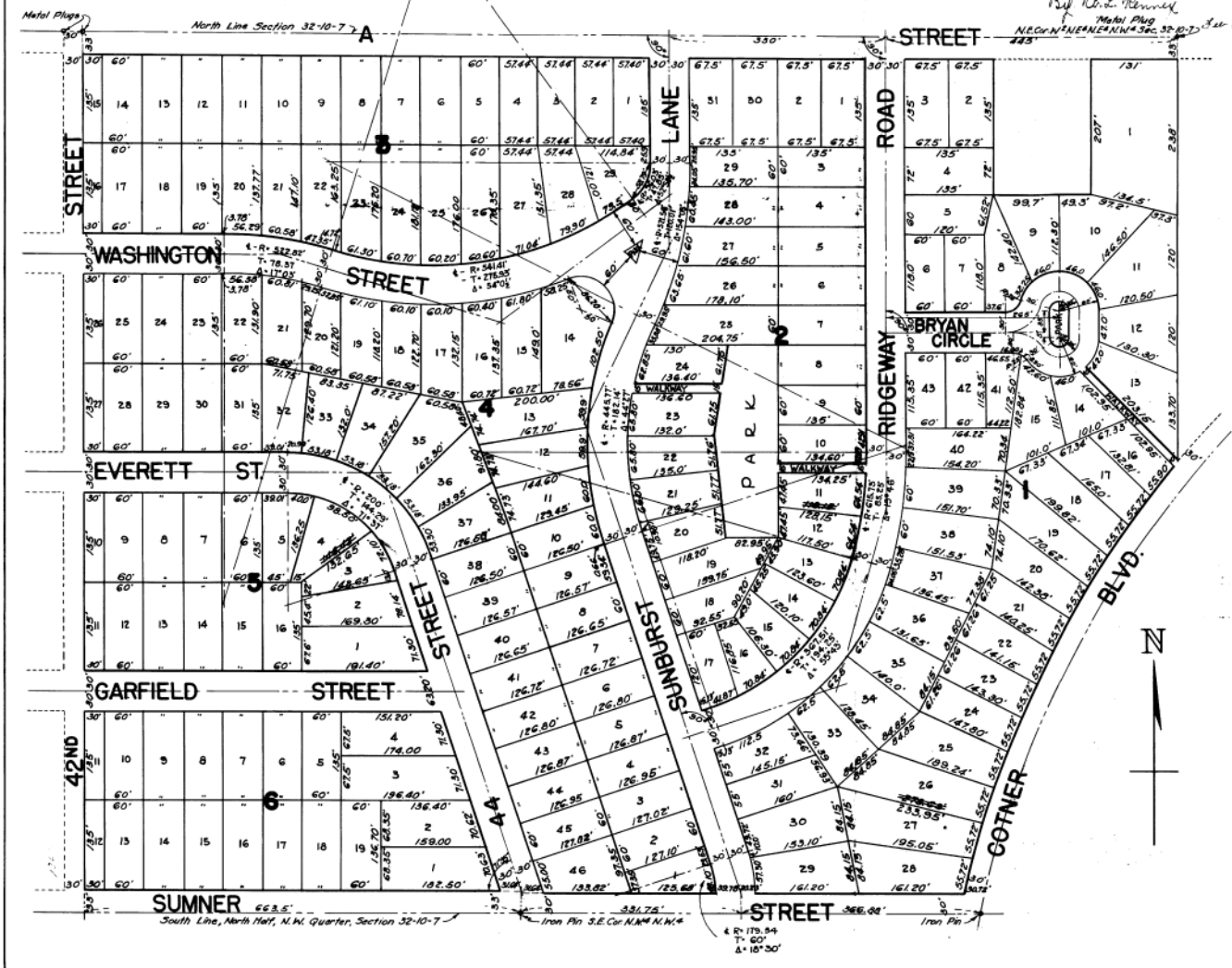


KIMBALLCREST

Scale 1"=100'



FILED IN PLAT BOOK
 INDEXED AND
 RECORDED IN
 PLAT BOOK
 10 SEP 19 1946
 68
 C. C. Kimball
 Ref. R. H. Kimmel
 Metal Plug
 N.E. COR. N. 1/4 E. 1/4 NW 1/4 SEC. 32 T. 10 N. R. 7 E.

DEDICATION
 The foregoing subdivision of lots 4, 34, 199, 200 and all of lot 53 except the west 149 feet of the east 280 feet of the north 240 feet of Irregular Tracts in the N.W. Quarter of Section 32, Township 10 North, Range 7 East of the 6th P.M., Lancaster County, Nebraska, and the plotting of the same as "KIMBALLCREST" is with the free consent and in accordance with the desire of the C.C. Kimball Company, a corporation, sole owners and proprietors. The streets, walkways and parks shown thereon are hereby dedicated to the public together with an easement on the rear two feet of all lots and along the east side of lots 1, 2, 7, and 41, Block 1; lots 16 and 30, Block 2; Lot 17, Block 4; Lot 16, Block 5; Lots 5, 14, 20, 24, 31 and 40, Block 1; along the west side of lots 1, 6, 15, and 33, Block 1; Lots 2 and 15, Block 2; Lot 16, Block 4; and along the north side of lots 4, 5, 21, 25, 30, 39 and 40, Block 1; Lots 3, 13, 21, 22 and 29, Block 2; Lot 29, Block 3; Lots 13 and 37, Block 4; Lot 3, Block 5; Lot 7, Block 6; and along the south side of lots 1, 4, 5, 14, 20, 24, 31 and 40, Block 1; lots 12, 18, 22 and 23, Block 2; Lot 36, Block 4; Lot 4, Block 5; and Lot 3, Block 6 for the construction and maintenance of sewers, conduits and pole lines.
 Witness our hands this 19th day of July, 1946.

C. C. Kimball Company, a corporation

Attest *[Signature]* by *[Signature]*
 Notary Public

ACKNOWLEDGEMENT
 State of Nebraska
 Lancaster County
 On this 19th day of July, 1946 before me the undersigned, a Notary Public, duly commissioned, qualified for and residing in said county, personally came C. C. Kimball, president of the C. C. Kimball Company, a corporation, to me personally known to be the identical person whose name is affixed to the foregoing instrument and acknowledged the same to be his voluntary act and deed.
 Witness my hand and Notarial Seal the day and year first above written.

My commission expires
 Notary Public

SURVEYOR'S CERTIFICATE
 I hereby certify that I have surveyed and staked out "KIMBALLCREST" as the same appears on the annexed plat. True plat is set at all lot corners. All dimensions along curved lines are chord measurements.
 Signed this 2nd day of July 1946

Clifford P. Orr
 Surveyor
 I hereby certify that the dimensions of the lot lines between the following lots, as shown on this plat, are as follows:
 Between lots 26 and 27, Block 1 should be 233.95' instead of 238.65'
 " " 11 " 12 " 2 " " 128.15' " " 118.15'
 " " 3 " 4 " 5 " " 132.65' " " 146.42'
 These corrections are made this 27th day of February 1947.

Signed *Clifford P. Orr*
 Surveyor
 Approved and accepted by the City Council of the City of Lincoln, Nebraska by Ordinance No. 4431 passed August 18, 1946.

Attest *[Signature]*
 City Clerk