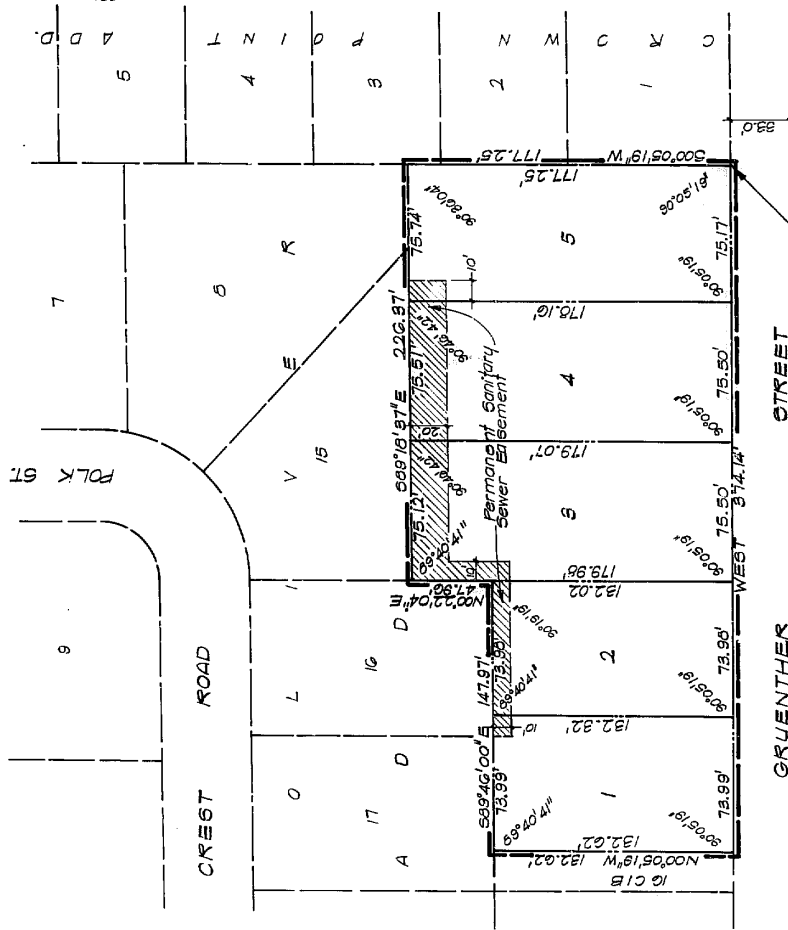


JOCHIM'S FIRST ADDITION

Lots 1 Thru 5, Inclusive
Being a platting of part of Tax Lot 10 C1A of the SE 1/4
of Section 21, T14N, R12E of the 6th P.M., Sarpy County, Nebraska.



SURVEYOR'S CERTIFICATE
I hereby certify that I have made a boundary survey of the subdivision herein and that the lines have been set at all corners of said boundary and at all lot corners of said subdivision to be known as Jochim's First Addition, lots 1 thru 5 inclusive, being a platting of that part of Tax Lot 10 C1A in the SE 1/4 of Section 21, T14N, R12E of the 6th P.M., Sarpy County, Nebraska, and that the same are recorded in said Sarpy County Nebraska, thence West 177.25 feet to the South line of Lot 1, Crown Point Addition as surveyed, platted and recorded in said Sarpy County Nebraska, thence West 177.25 feet to the South line of Lot 1, Crown Point Addition as surveyed, platted and recorded in said Sarpy County Nebraska, thence South 89°46'00\"/>

DEDICATION
Know all men by these presents that we, Jochim Precast Concrete Co., Inc. (a Nebraska Corporation) being the owners of the land described within the Surveyor's Certificate and embraced within this plat, have caused said land to be subdivided into lots 1 thru 5, inclusive, and do hereby ratify and approve of the disposition of our property as shown on this plat; and we do further grant a perpetual easement to the Omaha Public Power District, Northwestern Bell Telephone Company, and any other utility companies, their successors and assigns, to erect, operate, maintain and repair and renew poles, wires, crossarms, down guys and anchors, cables, conduits and other related facilities, and to extend, replace, repair or change for the transmission of signals and sounds of all kinds and the reception thereof, including signals provided by a cable television system and their reception, on, over, through, under and across a five (5') foot wide strip of land adjacent to the rear boundary lines of all interior lots; and a sixteen (16') foot wide strip of land adjoining the rear boundary lines of all exterior lots. The term exterior lots means all lots within said subdivision which are bounded on one side by the rear boundary lines of all interior lots; and a sixteen (16') foot wide easement will be reduced to an eight (8') foot wide strip when the adjacent land is surveyed, platted and recorded if said sixteen (16') foot easement is not occupied by utility facilities and if such easement shall be placed in the said easement ways, but the same may be used for gardens, shrubs, landscaping and other purposes that do not then or later interfere with the aforesaid uses or rights herein granted.

JOCHIM PRECAST CONCRETE CO.
PRESIDENT
Edwin C. Jochim
ACKNOWLEDGMENT OF NOTARY
STATE OF NEBRASKA)
COUNTY OF SARPY)
The foregoing instrument was acknowledged before me this 14th day of June, 1987, by *Edwin C. Jochim* and *James D. Walker*, Inc., a Nebraska Corporation, on behalf of the corporation.
Notary Public
James D. Walker

APPROVAL BY PAVILLION CITY COUNCIL
ACCEPTANCE OF PAVILLION CITY COUNCIL
I hereby certify that the records of my office show no taxes due or delinquent upon the land described in the surveyor's certificate as appears on this plat as of the 12 day of June, 1987.
SARPY COUNTY TROUSTON
James D. Walker
SARPY COUNTY SURVEYOR

APPROVAL BY PAVILLION CITY PLANNING BOARD
This plat of Jochim's First Addition was approved by the City Planning Board of the City of Papillion, Nebraska on this 14th day of June, 1987.
MAYOR
John J. Johnson

APPROVAL BY PAVILLION CITY ENGINEER
This plat of Jochim's First Addition is approved by the City Engineer of the City of Papillion, Nebraska on this 14th day of June, 1987.
CITY ENGINEER
Robert J. Johnson

APPROVAL OF SARPY COUNTY SURVEYOR
This plat of Jochim's First Addition was approved by the Sarpy County Surveyor this 14th day of June, 1987.
SARPY COUNTY SURVEYOR
James D. Walker

95-10958

DATE	Feb. 9, 1987
REVIEWED BY	J.P.
CHECKED BY	J.P.
EMISION	

JOCHIM'S FIRST ADDITION
Final Plat

THOMPSON, DRESSSEN & DONNER
Consulting Engineers & Land Surveyors