

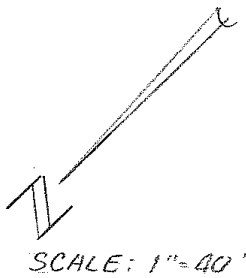
To The Office of
County Surveyor and Engineer
SARPY COUNTY

LAND SURVEYOR'S CERTIFICATE

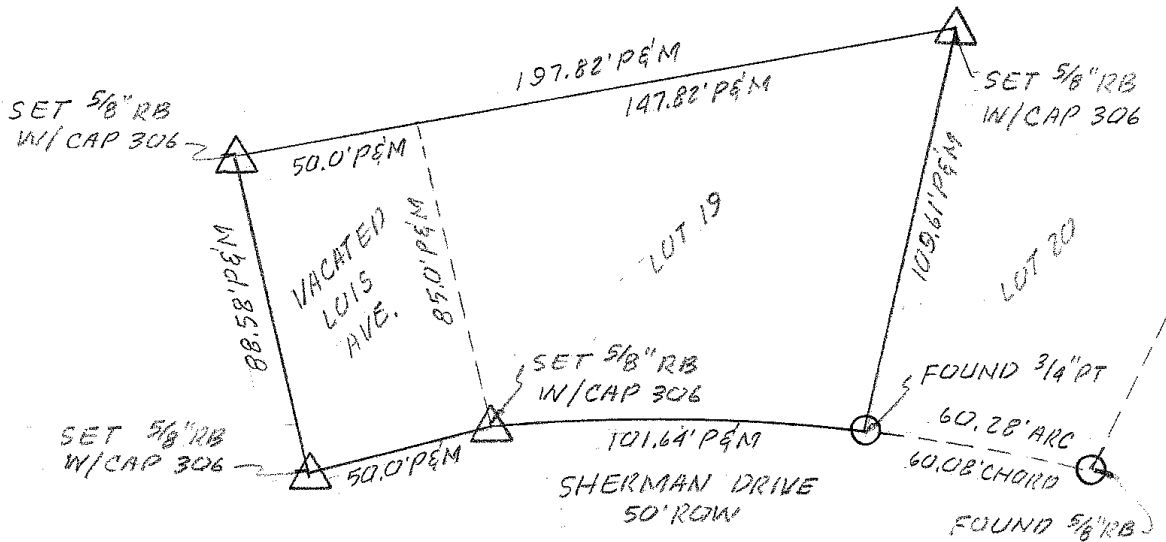
I hereby certify that this plat, map, survey or report was made by me or under my direct personal supervision and that I am a duly Registered Land Surveyor under the laws of the State of Nebraska.

Legal Description;
LOT 19 AND VACATED LOIS AVENUE, JEWEL DALE, AS SURVEYED, PLATTED, AND RECORDED IN SARPY COUNTY, NEBRASKA

Field Notes
SET REMAINING CORNERS ON LINE AT SHOWN DISTANCES. SET CORNERS ARE 5/8 REBAR WITH CAP STAMPED NEBRASKA LICENSE 306. MEASURED AND RECORDED DISTANCES AROUND SURVEY



- LEGEND
- △ LOT CORNER SET
 - LOT CORNER FOUND
 - P PLATTED DISTANCE
 - M MEASURED DISTANCE
 - PT PINCHED TOP PIPE
 - OT OPEN TOP PIPE
 - IP IRON PIPE
 - RB REINFORCING BAR



Clarence Roger Carrell
Signature of Land Surveyor

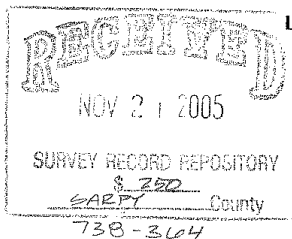
Date 11/07/05

Reg. No. 306

DATE RECEIVED _____

OFFICIAL ADDRESS _____

BLDG. PERMIT NO. _____



CARRELL
& ASSOCIATES, INC.
LAND SURVEYORS & CONSULTANTS
5004 S. 110TH STREET
OMAHA, NEBRASKA 68137
402/331-2333
FAX - 402/331-6077

