

Handwritten notes and signatures at the top right of the page.

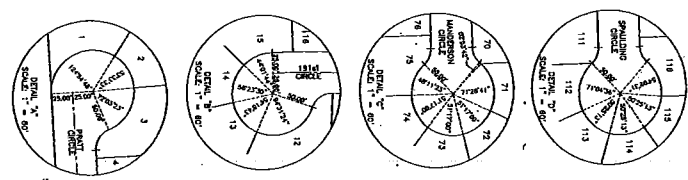
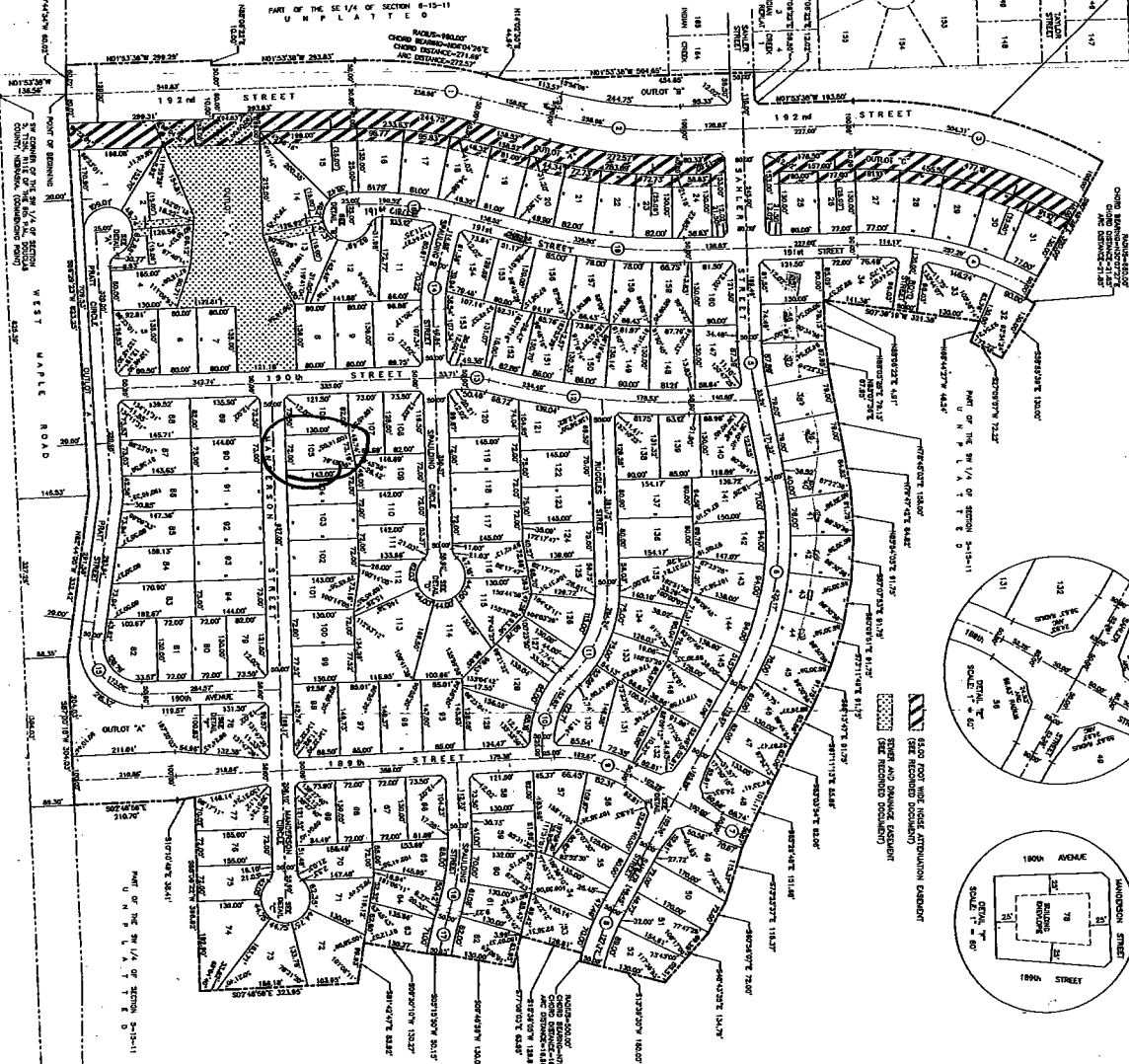
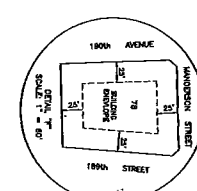
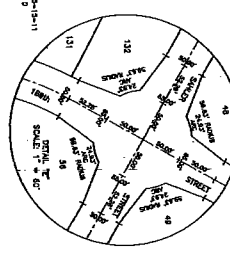


Table with columns for LOT NO., AREA, DISTANCE, and other metrics. It lists various lots and outlots with their respective areas and dimensions.



Vertical text on the left side of the map: 'WEST MAPLE ROAD', 'POINT OF BEGINNING', 'CORNER OF THE SE 1/4 OF SECTION 8-18-11', 'U. N. P. L. A. 1. 1. 8. 0', 'U. N. P. L. A. 1. 1. 8. 0'.



- A list of notes and conditions for the plat, including details about easements, distances, and survey methods.

INDIAN POINT

LOTS 1 THRU 160, INCLUSIVE AND OUTLOTS "A", "B" AND "C"

BEING A PLATING OF PART OF THE SW 1/4 OF SECTIONS 8-18-11 OF THE 6th P.M., DODD COUNTY, NEBRASKA.

County Treasurer's Certificate, Acknowledgement of Notary, and various official signatures and seals from the County Engineer, City Engineer, and City Council.

Professional information including 'INDIAN POINT ENGINEERING & SURVEYING', contact details, and job reference numbers.

INDIAN POINT
LOTS 1 THRU 160, INCLUSIVE
AND OUTLOTS "A", "B" AND "C"