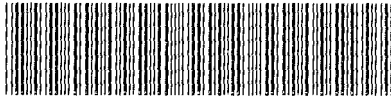


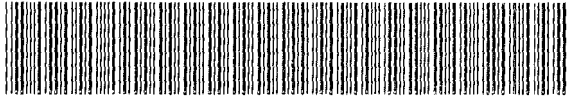
RECEIVED

JUL 31 4 20 PM '97

RICHARD N. TAKECHI
REGISTER OF DEEDS
DOUGLAS COUNTY, NE



BK 2067 PG 208



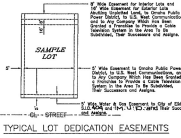
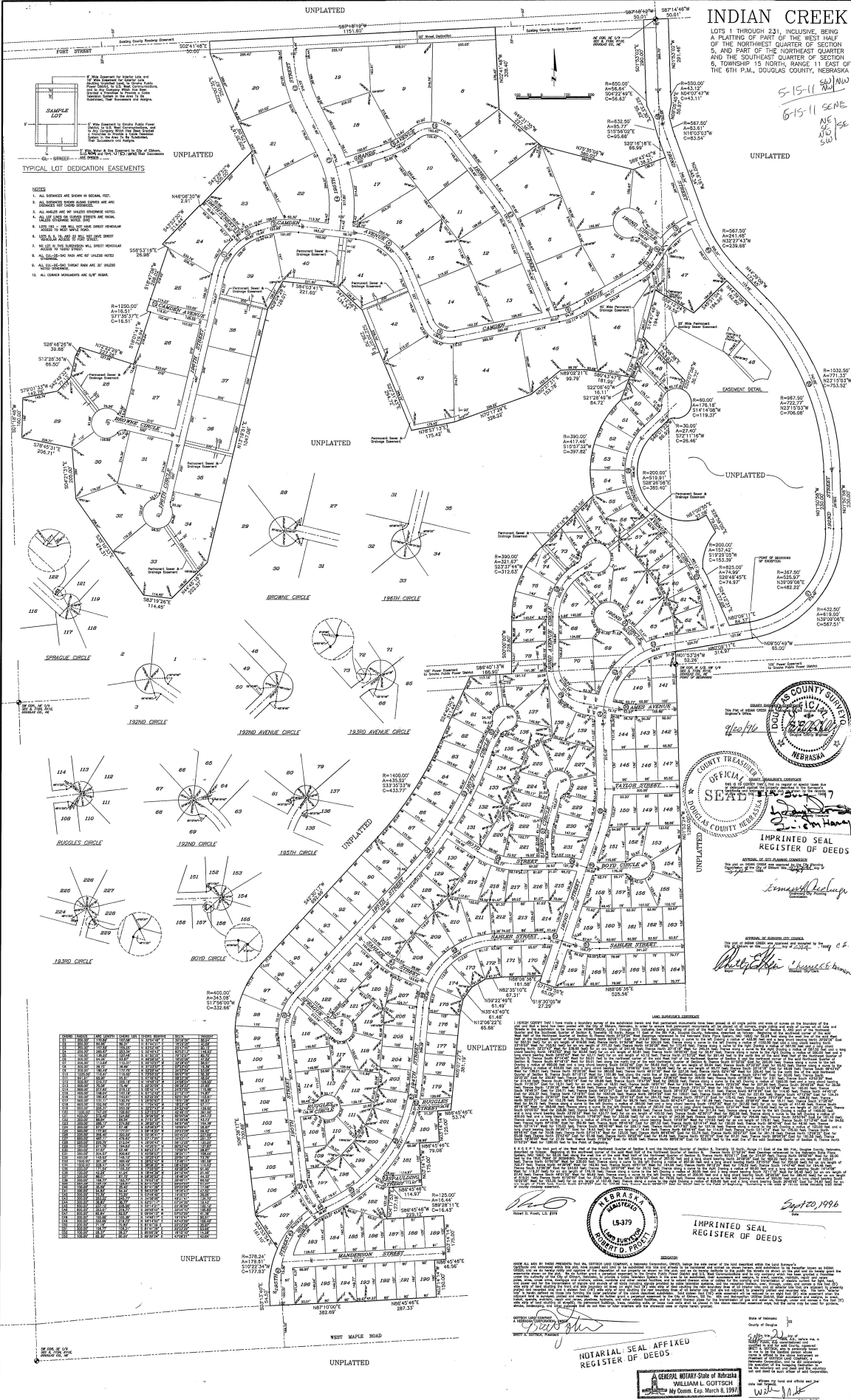
DEED 1997009792

9792 5-15-11 7 new # 02-181271
 6-15-11
 T 116150 P 1801-60000 (paid)
 DEL MB C/O COMP MB
 LEGAL FG SCANDS FV

INDIAN CREEK

LOTS 1 THROUGH 231, INCLUSIVE, BEING A PLATING OF PART OF THE WEST HALF OF THE NORTHWEST QUARTER OF SECTION 5, AND PART OF THE NORTHEAST QUARTER AND THE SOUTHWEST QUARTER OF SECTION 6, TOWNSHIP 15 NORTH, RANGE 11 EAST OF THE 6TH P.M., DOUGLAS COUNTY, NEBRASKA

5-15-11
6-15-11
NE
NW
SW
SE



- TYPICAL LOT DEDICATION EASEMENTS**
1. ALL SERVICES ARE SHOWN IN RED/BLACK INK.
 2. ALL SERVICES ARE SHOWN IN RED/BLACK INK.
 3. ALL SERVICES ARE SHOWN IN RED/BLACK INK.
 4. ALL SERVICES ARE SHOWN IN RED/BLACK INK.
 5. ALL SERVICES ARE SHOWN IN RED/BLACK INK.
 6. ALL SERVICES ARE SHOWN IN RED/BLACK INK.
 7. ALL SERVICES ARE SHOWN IN RED/BLACK INK.
 8. ALL SERVICES ARE SHOWN IN RED/BLACK INK.
 9. ALL SERVICES ARE SHOWN IN RED/BLACK INK.
 10. ALL SERVICES ARE SHOWN IN RED/BLACK INK.
 11. ALL SERVICES ARE SHOWN IN RED/BLACK INK.
 12. ALL SERVICES ARE SHOWN IN RED/BLACK INK.
 13. ALL SERVICES ARE SHOWN IN RED/BLACK INK.
 14. ALL SERVICES ARE SHOWN IN RED/BLACK INK.
 15. ALL SERVICES ARE SHOWN IN RED/BLACK INK.
 16. ALL SERVICES ARE SHOWN IN RED/BLACK INK.



IMPRINTED SEAL REGISTER OF DEEDS
L. J. ...
2011

IMPRINTED SEAL REGISTER OF DEEDS
L. J. ...
2011

IMPRINTED SEAL REGISTER OF DEEDS
L. J. ...
2011

IMPRINTED SEAL REGISTER OF DEEDS
L. J. ...
2011

IMPRINTED SEAL REGISTER OF DEEDS
L. J. ...
2011