

NUMERICAL INDEX, LANCASTER COUNTY

BOOK NO. CITY OF LINCOLN

SUBDIVISION

LOTS 1, 2 & 3 BLOCK 42 LINCOLN.

Scale 1/4 inch = 25 feet.

LEGEND.

The annexed Plat shows the subdivision of Lots 1, 2, and 3 in Block 42 Lincoln in the City of Lincoln Lancaster County Nebraska.

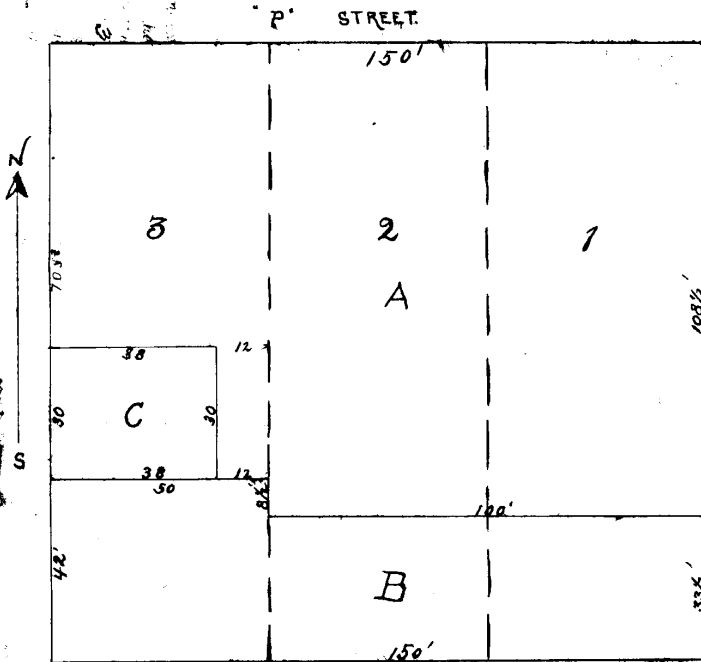
Dimensions of lots marked in red figures on the plat.

Boundaries of subdivision lots are shown by black lines.

Boundaries of old lots are shown by dotted blue lines except where they coincide with boundaries of subdivision lots.

Blue figures show numbers of old lots.

Black letters A, B, C, indicate the numbers of the subdivision lots.



BLOCK 42.

The foregoing subdivision of Lots (1, 2, and 3) one, two, and three, in Block (42) forty-two as appear on this Plat, is with the free consent and in accordance with the desire of the undersigned owners and proprietors. This subdivision is made in accordance with the provisions of section 104 of an act entitled "An Act to provide for the organization, government, and powers of cities and villages" Approved March 14th A.D. 1879.

In presence of O. Bell

Signed

Joseph D. Imhoff

Mary E. Imhoff

Wm. P. Wyatt

Esther E. Wyatt

State of Nebraska } ss
Lancaster County }

On this 15th day of July A.D. 1893 before me O. Bell a Notary Public, duly appointed, commissioned, and qualified for, and residing in said County, personally appeared, Joseph D. Imhoff and Mary E. Imhoff, and William P. Wyatt and Esther E. Wyatt who executed the above plat and acknowledged the same to be their voluntary act and deed.

O. O. Bell
Notary Public.