

HOWARD WILLIAMS THIRD ADDITION

TO
FREMONT, NEBRASKA
SCALE - 1" = 100'

STATE OF NEBRASKA
DODGE COUNTY
December 6, 1967
at 9:30 P.M.
Miss Betty A. Kowalski
City Clerk

SURVEYOR'S CERTIFICATE

I certify that I am a registered Land Surveyor, that I personally supervised the survey and platting of this Addition, that gaspipe were driven at all lot and block corner of this Addition and all measurements shown on this plat are in accordance with a survey made under my supervision.

Jacob D. Packer
Jacob D. Packer
Reg. Land Surveyor No. 59

DEDICATION

KNOW ALL MEN BY THESE PRESENTS: That the undersigned, being the owner of a part of the North 1/2 of the Northeast 1/4 of Section 13, T. 17 N., R. 8 E. of the 6th P.M. described as follows: Commencing at a point on the south margin of said north 1/2, 1055.8 feet east of its southwest corner; thence east along its south margin 278 feet; thence north, parallel with its west margin 175 feet; thence east, parallel with its south margin 114 feet; thence north, parallel with its west margin 539.55 feet; thence west, parallel with its south margin 167 feet; thence north, parallel with its west margin 160 feet; thence west, parallel with its south margin 2.08 feet; thence south, parallel with its west margin 160 feet; thence east, parallel with its south margin 114 feet; thence south, parallel with its west margin 539.55 feet; thence west, parallel with its south margin 114 feet; thence south to the point of beginning.

Fremont, Nebraska. Said Addition consists of 4 blocks, numbered 9, 10, 11 and 12. Said blocks are subdivided into lots with their number and dimensions shown on this plat.

We dedicate for perpetual use by the public, 20TH STREET, 22ND STREET and DONALD STREET which are 50 feet in width. We here grant to the City of Fremont, and any public or private utility company and for reciprocal use by abutting property owners, an easement across the south 30 feet of all lots in Block 9 and across the rear 10 feet of all other lots in this addition for the sole purpose of construction and maintenance of utility lines and pipes.

By affixing our signatures hereto, we acknowledge this dedication and platting to be our voluntary act and deed.

Arthur C. Gifford
ARTHUR C. GIFFORD, President

Irene M. Gifford
IRENE M. GIFFORD, Secretary

NOTARY

STATE OF NEBRASKA)
COUNTY OF DODGE) ss

On this 28 day of November, 1967, before me, a Notary Public in and for said County, personally came ARTHUR C. GIFFORD, President, and IRENE M. GIFFORD, Secretary of Gifford Homes, Inc., to me personally known to be identical persons whose signatures are attached hereto, do hereby acknowledge this dedication and platting to be our voluntary act and deed and the voluntary act and deed of Gifford Homes, Inc., and its corporate seal is hereby affixed by its authority.

My Commission expires February 25, 1968

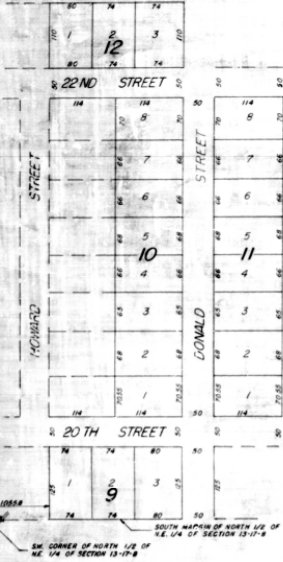
Robert M. Mung
ROBERT M. MUNG
NOTARY PUBLIC

APPROVAL

On this 28 day of Nov, 1967, this plat is approved by the undersigned Mayor and City Clerk as instructed by resolution passed by the City Council on the above date.

Ernest W. Reed
ERNEST W. REED
MAYOR

Edith Manning
EDITH MANNING
CITY CLERK



SOUTH MARGIN OF NORTH 1/2 OF NE 1/4 OF SECTION 13-17-8