



MISC 2009081787



JUL 28 2009 13:47 P 7

Misc

OW-17344

FEE 37 FB _____

BKP _____ C/O _____ COMP MB

DEL _____ SCAN _____ FV _____ YT

F 24

Received - DIANE L. BATTIATO
Register of Deeds, Douglas County, NE
7/28/2009 13:47:42.85



2009081787

**THIS PAGE INCLUDED FOR INDEXING
PAGE DOWN FOR BALANCE OF INSTRUMENT**

Return To: _____

#9

Check Number

|

Village of Waterloo

Douglas County, Nebraska

Certification

I hereby certify that, as the Administrator/Clerk/Treasurer, Waterloo, Nebraska I have approved the Application for a Lot Division from Homes at River Road, L.L.C. for Lot 75, Waterloo, Nebraska, Douglas County as provided in The Village of Waterloo Subdivision Regulations, Section 705 amended October 12, 2004.

Nancy Hert

Nancy Hert, Village Administrator/Clerk
Treasurer, Waterloo, Nebraska



Date: 7/23/09

#9
NEED HERBERT

VILLAGE OF WATERLOO

APPLICATION FOR A LOT DIVISION

DATE: 11-9-08 ADDRESS: 23205 Agee Lane

APPLICANT: Homes at River Rd. LLC PHONE #: 493-2800

Under the Provisions of the Village of Waterloo Subdivision Regulations, Section 705, amended October 12, 2004 per Ordinance No. 659, the Undersigned hereby applies for a one time division of a lot or parcel of land into not more than two (2) lots or parcels of land and has provided the following:

- A certified plat prepared by a registered engineer or land surveyor showing in detail the proposed division of the lot or parcel of land, including abutting streets, utilities, easements, improvements, public facilities, abutting properties, and any property that would be affected by the proposed spilt.
- Proof of payment of real estate taxes for the current year and past years on all involved lots or parcels of land.

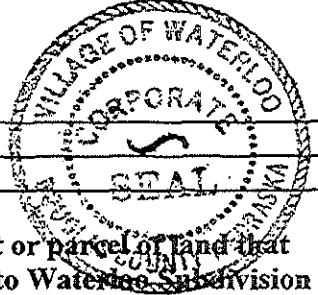
SIGNATURE OF APPLICANT: _____

APPROVED: NOT APPROVED: _____ DATE: 12-23-08

REVIEWED BY: Nancy Hert TITLE: Village Administrator

SIGNATURE: Nancy Hert

REASON FOR NOT APPROVING:



ACTION REQUIRED BY APPLICANT: A division of a lot or parcel of land that cannot be approved by the Village Administrator pursuant to Waterloo Subdivision Regulations, Section 705, shall require review in accordance with the plat submission and review requirements.

The Application for Lot Division, certified plat, and required fee (\$100 for Variance Request) must be submitted to the Village Administrator three (3) weeks before a regularly scheduled meeting of the Village Planning Board.

COPY

VILLAGE OF WATERLOO
APPLICATION FOR A LOT DIVISION

DATE: 11-19-08 ADDRESS: 23205 Ager Lane

APPLICANT: Homes at River Road L.L.C. PHONE #: 493-2800

Under the Provisions of the Village of Waterloo Subdivision Regulations, Section 705, amended October 12, 2004 per Ordinance No. 659, the Undersigned hereby applies for a one time division of a lot or parcel of land into not more than two (2) lots or parcels of land and has provided the following:

- A certified plat prepared by a registered engineer or land surveyor showing in detail the proposed division of the lot or parcel of land, including abutting streets, utilities, easements, improvements, public facilities, abutting properties, and any property that would be affected by the proposed split.
- Proof of payment of real estate taxes for the current year and past years on all involved lots or parcels of land.

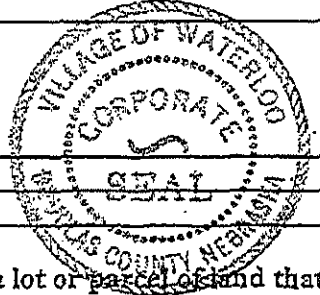
SIGNATURE OF APPLICANT: [Signature]

APPROVED: NOT APPROVED: DATE: 12-23-08

REVIEWED BY: Nancy Hert TITLE: Village Administrator

SIGNATURE: Nancy Hert

REASON FOR NOT APPROVING:



ACTION REQUIRED BY APPLICANT: A division of a lot or parcel of land that cannot be approved by the Village Administrator pursuant to Waterloo Subdivision Regulations, Section 705, shall require review in accordance with the plat submission and review requirements.

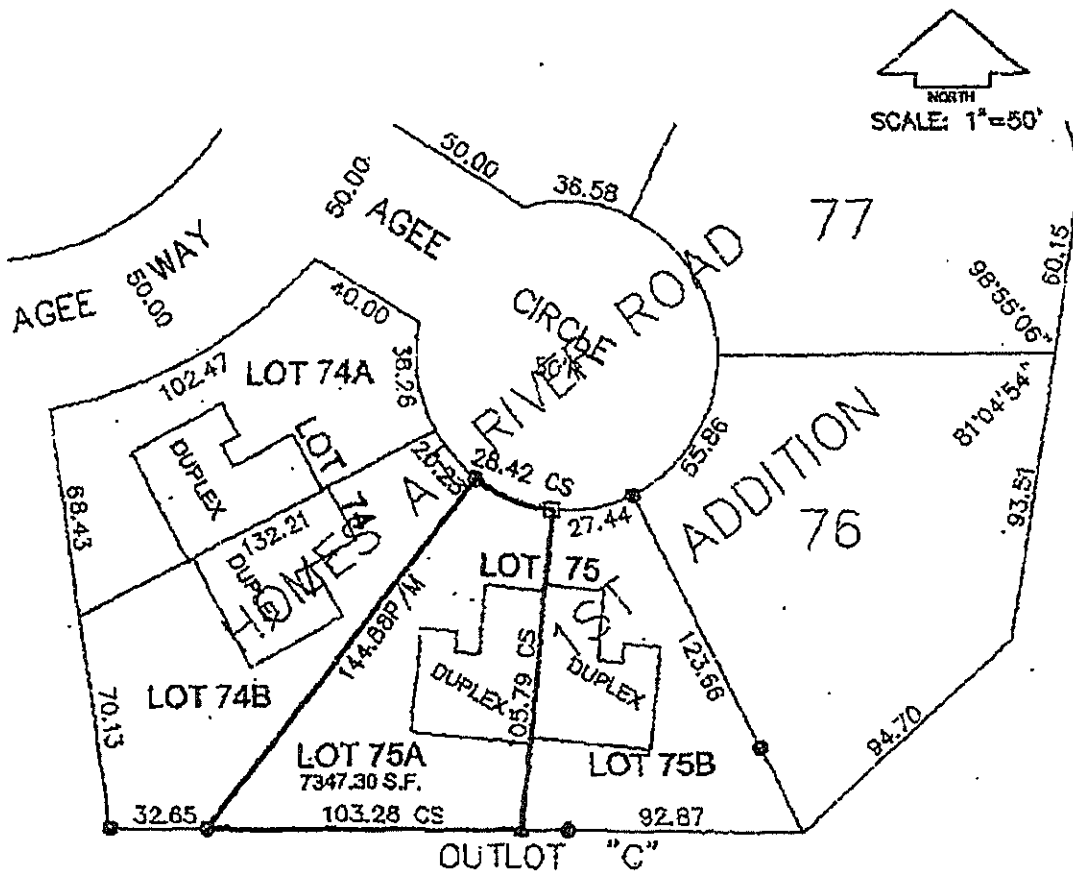
The Application for Lot Division, certified plat, and required fee (\$100 for Variance Request) must be submitted to the Village Administrator three (3) weeks before a regularly scheduled meeting of the Village Planning Board.

COPY

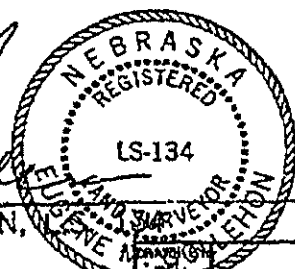
LAND SURVEYOR'S CERTIFICATE

I HEREBY CERTIFY THAT I HAVE SURVEYED THE PROPERTY DESCRIBED AND THAT PERMANENT MARKERS HAVE BEEN FOUND OR SET AT ALL CORNERS OF THE LOT FURTHER DESCRIBED AS FOLLOWS:

LOT 75A, A PART OF LOT 75, HOMES AT RIVER ROAD, 1ST ADDITION, AN ADDITION IN THE CITY OF WATERLOO, NE., AS SURVEYED, PLATTED AND RECORDED IN DOUGLAS COUNTY, NE



E.M. Gollehon
 E.M. GOLLEHON,
 LICENSED SURVEYOR



- SET 3/4" DRILL HOLE IN DRIVEWAY
- △ SET CAPPED 5/8" REBAR NO. 134
- FOUND 5/8" REBAR
- CS = COMPUTED SPLIT
- M = MEASURED
- P = PLAT DIST.

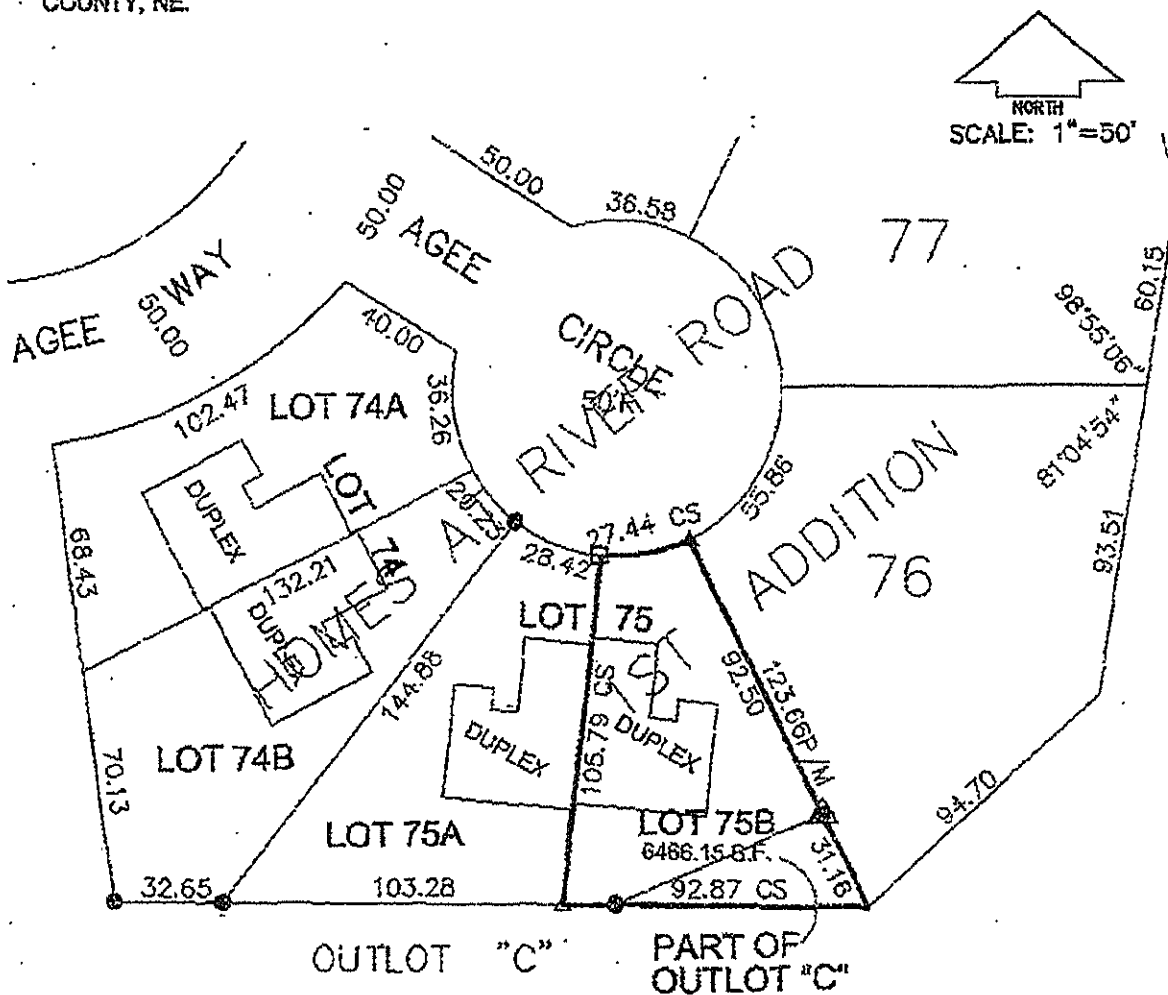
DATE <i>Dec 1, '08</i>	PE/LS, INC. CIVIL ENGINEERING SURVEYING 6057 DORCHESTER PLAZA, OMAHA, NEB. 68127 891-0634	PROJECT NO. M8008
		DATE 11/22/08
	LOT SPLIT OF LOT 75, HOMES AT RIVER ROAD, 1st ADDITION	SHEET NO: 1

COPY 6

LAND SURVEYOR'S CERTIFICATE

I HEREBY CERTIFY THAT I HAVE SURVEYED THE PROPERTY DESCRIBED AND THAT PERMANENT MARKERS HAVE BEEN FOUND OR SET AT ALL CORNERS OF THE LOT FURTHER DESCRIBED AS FOLLOWS:

LOT 75B, A PART OF LOT 75 AND PART OF OUTLOT "C", HOMES AT RIVER ROAD, 1ST ADDITION, AN ADDITION IN THE CITY OF WATERLOO, NE. AS SURVEYED, PLATTED AND RECORDED IN DOUGLAS COUNTY, NE.



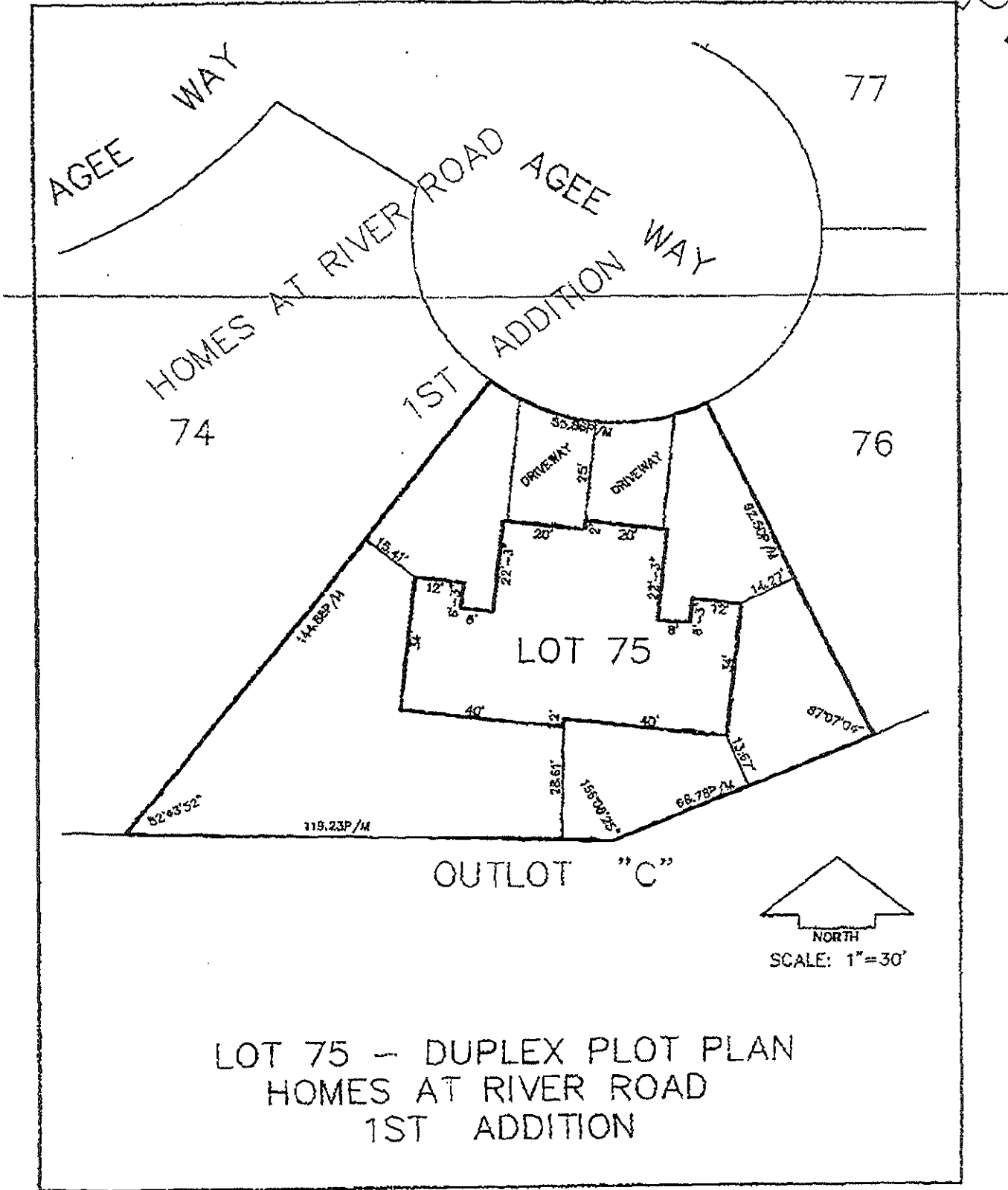
E.M. Goll
 NEBRASKA REGISTERED SURVEYOR
 18134
 E.M. GOLL
 CIVIL ENGINEER & SURVEYOR
 E.M. GOLL

- SET 3/4" DRILL HOLE IN DRIVEWAY
- △ SET CAPPED 5/8" REBAR NO. 134
- FOUND 5/8" REBAR
- CS = COMPUTED SPLIT
- M = MEASURED
- P = PLAT DIST.
- ▲ FOUND ACCESSORY MONUMENT TO CORNER IN WATER.

Dec 1, 08
 DATE

DRAWN BY: TEM	PE/LS, INC. CIVIL ENGINEERING SURVEYING 6037 DAKCREST PLAZA, OMAHA, NEB. 68137 821-0694	PROJECT NO. M8008
CHECKED BY: EMG	LOT SPLIT OF LOT 75, HOMES AT RIVER ROAD, 1st ADDITION	DATE: 11/22/08
		SHEET NO. 1

COPY



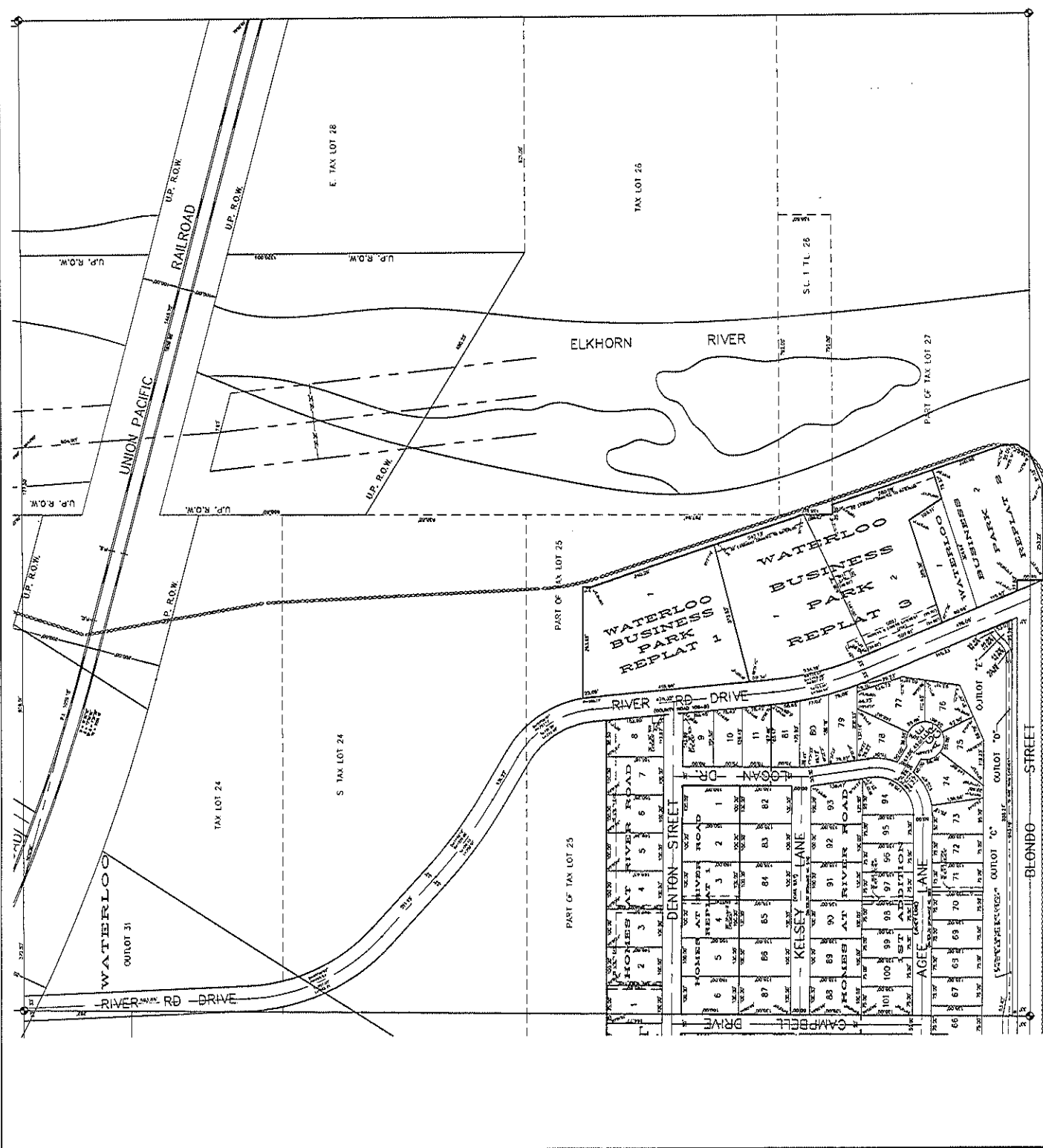
LOT 75 - DUPLEX PLOT PLAN
HOMES AT RIVER ROAD
1ST ADDITION



DOUGLAS COUNTY ENGINEER
 156TH & W. MAPLE RD. NE. OMAHA NE. 68116

DATE	12/27/2008	REVISIONS TO	01
BY	W. J. HARRIS	REVISIONS TO	01
DATE	12/27/2008	REVISIONS TO	01
BY	W. J. HARRIS	REVISIONS TO	01

INFORMATION ON THIS SHEET SHOULD BE CHECKED WITH THE ENGINEER'S OFFICE BEFORE ANY CONSTRUCTION BEGINS.



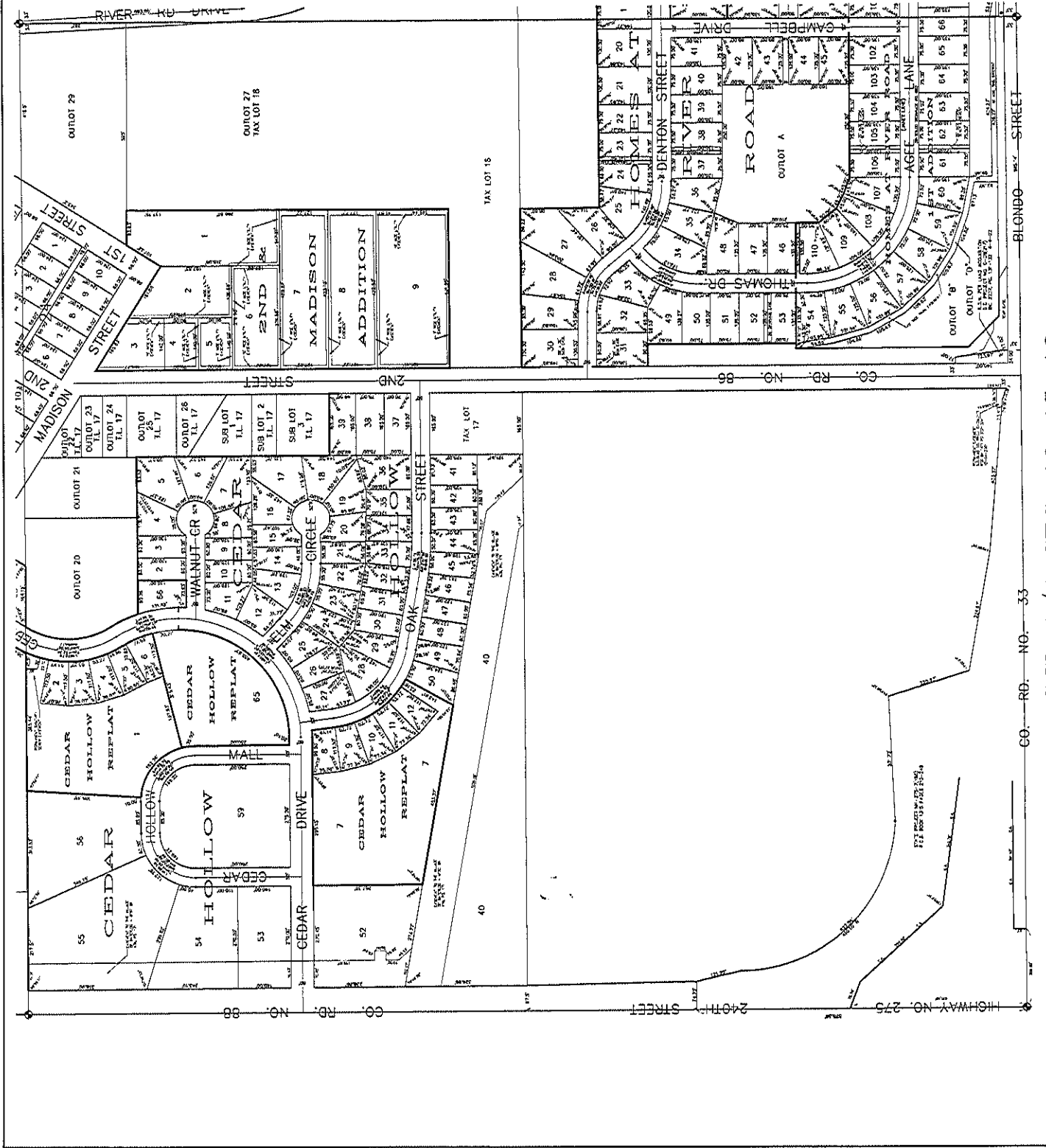
S.E. 1/4 SEC. 10-15-10

1. All Platements Must Be Made in Accordance with the Platting Act, R.S. 46-1-10 to 10-14.



DOUGLAS COUNTY ENGINEER
 OMAHA NE. 68116
 156TH & W. MAPLE RD.

DATE	DESCRIPTION
10/15/14	PRELIMINARY PLAN
10/15/14	REVISION NO. 1
10/15/14	REVISION NO. 2
10/15/14	REVISION NO. 3
10/15/14	REVISION NO. 4
10/15/14	REVISION NO. 5
10/15/14	REVISION NO. 6
10/15/14	REVISION NO. 7
10/15/14	REVISION NO. 8
10/15/14	REVISION NO. 9
10/15/14	REVISION NO. 10
10/15/14	REVISION NO. 11
10/15/14	REVISION NO. 12
10/15/14	REVISION NO. 13
10/15/14	REVISION NO. 14
10/15/14	REVISION NO. 15
10/15/14	REVISION NO. 16
10/15/14	REVISION NO. 17
10/15/14	REVISION NO. 18
10/15/14	REVISION NO. 19
10/15/14	REVISION NO. 20
10/15/14	REVISION NO. 21
10/15/14	REVISION NO. 22
10/15/14	REVISION NO. 23
10/15/14	REVISION NO. 24
10/15/14	REVISION NO. 25
10/15/14	REVISION NO. 26
10/15/14	REVISION NO. 27
10/15/14	REVISION NO. 28
10/15/14	REVISION NO. 29
10/15/14	REVISION NO. 30
10/15/14	REVISION NO. 31
10/15/14	REVISION NO. 32
10/15/14	REVISION NO. 33
10/15/14	REVISION NO. 34
10/15/14	REVISION NO. 35
10/15/14	REVISION NO. 36
10/15/14	REVISION NO. 37
10/15/14	REVISION NO. 38
10/15/14	REVISION NO. 39
10/15/14	REVISION NO. 40
10/15/14	REVISION NO. 41
10/15/14	REVISION NO. 42
10/15/14	REVISION NO. 43
10/15/14	REVISION NO. 44
10/15/14	REVISION NO. 45
10/15/14	REVISION NO. 46
10/15/14	REVISION NO. 47
10/15/14	REVISION NO. 48
10/15/14	REVISION NO. 49
10/15/14	REVISION NO. 50
10/15/14	REVISION NO. 51
10/15/14	REVISION NO. 52
10/15/14	REVISION NO. 53
10/15/14	REVISION NO. 54
10/15/14	REVISION NO. 55
10/15/14	REVISION NO. 56
10/15/14	REVISION NO. 57
10/15/14	REVISION NO. 58
10/15/14	REVISION NO. 59
10/15/14	REVISION NO. 60
10/15/14	REVISION NO. 61
10/15/14	REVISION NO. 62
10/15/14	REVISION NO. 63
10/15/14	REVISION NO. 64
10/15/14	REVISION NO. 65
10/15/14	REVISION NO. 66
10/15/14	REVISION NO. 67
10/15/14	REVISION NO. 68
10/15/14	REVISION NO. 69
10/15/14	REVISION NO. 70
10/15/14	REVISION NO. 71
10/15/14	REVISION NO. 72
10/15/14	REVISION NO. 73
10/15/14	REVISION NO. 74
10/15/14	REVISION NO. 75
10/15/14	REVISION NO. 76
10/15/14	REVISION NO. 77
10/15/14	REVISION NO. 78
10/15/14	REVISION NO. 79
10/15/14	REVISION NO. 80
10/15/14	REVISION NO. 81
10/15/14	REVISION NO. 82
10/15/14	REVISION NO. 83
10/15/14	REVISION NO. 84
10/15/14	REVISION NO. 85
10/15/14	REVISION NO. 86
10/15/14	REVISION NO. 87
10/15/14	REVISION NO. 88
10/15/14	REVISION NO. 89
10/15/14	REVISION NO. 90
10/15/14	REVISION NO. 91
10/15/14	REVISION NO. 92
10/15/14	REVISION NO. 93
10/15/14	REVISION NO. 94
10/15/14	REVISION NO. 95
10/15/14	REVISION NO. 96
10/15/14	REVISION NO. 97
10/15/14	REVISION NO. 98
10/15/14	REVISION NO. 99
10/15/14	REVISION NO. 100



CO. RD. NO. 33

S.W. 1/4 SEC. 10-15-10