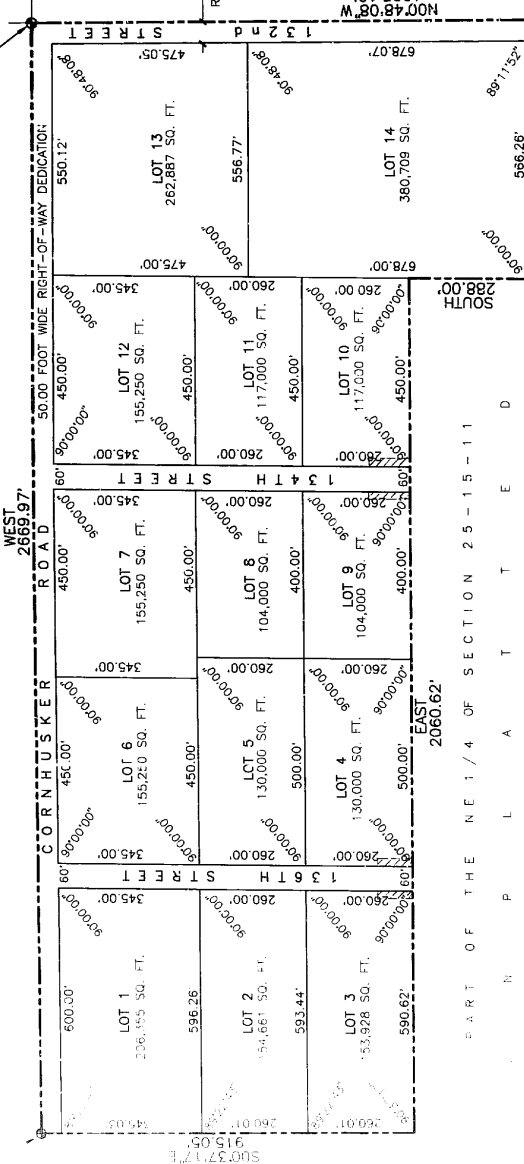


HILLTOP INDUSTRIAL PARK

LOTS 1 THRU 14, INCLUSIVE
BEING A PLATING OF PART OF THE NE 1/4 OF SECTION 25, T14N, R11E
OF THE 6TH P.M., SAPPY COUNTY, NEBRASKA

NE CORNER OF THE NE 1/4 OF SECTION 25, T14N, R11E OF THE 6TH P.M., SAPPY COUNTY, NEBRASKA (POINT OF BEGINNING)



APPROVAL OF SAPPY COUNTY BOARD OF COMMISSIONERS
THIS PLAT OF HILLTOP INDUSTRIAL PARK WAS APPROVED BY THE BOARD OF COMMISSIONERS THIS 25th DAY OF APRIL, 1997.

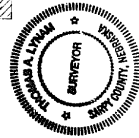
APPROVAL OF SAPPY COUNTY PLANNING COMMISSION
THIS PLAT OF HILLTOP INDUSTRIAL PARK WAS APPROVED BY THE PLANNING COMMISSION THIS 25th DAY OF APRIL, 1997.

SAPPY COUNTY TREASURER'S CERTIFICATE
I HEREBY CERTIFY THAT THE RECORDS OF MY OFFICE SHOW NO TAXES DUE OR ACCRUED UPON THE LAND DESCRIBED IN THE SURVEYOR'S CERTIFICATE AS THIS PLAT HAS BEEN FILED FOR THE 25th DAY OF APRIL, 1997. CURRENT TAXES ARE EITHER DUE OR PAID. TREASURER'S CERTIFICATION IS ONLY VALID UNTIL DECEMBER 31st OF THIS YEAR.

APPROVAL OF SAPPY COUNTY BUILDING INSPECTOR
THIS PLAT OF HILLTOP INDUSTRIAL PARK WAS APPROVED BY THE SAPPY COUNTY BUILDING INSPECTOR THIS 25th DAY OF APRIL, 1997.

APPROVAL OF SAPPY COUNTY SURVEYOR
THIS PLAT OF HILLTOP INDUSTRIAL PARK WAS APPROVED BY THE SAPPY COUNTY SURVEYOR THIS 25th DAY OF APRIL, 1997.

30 x 100' TEMPORARY TURN-AROUND EASEMENT GRANTED TO SANITARY IMPROVEMENT DISTRICT NO. 169 (SEE RECORDED INSTRUMENT)



SURVEYOR'S CERTIFICATE
MADE A BOUNDARY SURVEY OF THE NE 1/4 OF SECTION 25, T14N, R11E OF THE 6TH P.M., SAPPY COUNTY, NEBRASKA, DESCRIBED HEREIN LIES WHOLLY WITHIN SAID NE 1/4, AND THAT PERMANENT MARKERS WILL BE SET AT ALL CORNERS WITHIN SAID SUBDIVISION TO BE KNOWN AS HILLTOP INDUSTRIAL PARK, LOTS 1 THRU 14, INCLUSIVE, BEING A PLATING OF THAT PART OF SAID NE 1/4 DESCRIBED AS FOLLOWS: BEGINNING AT THE NE CORNER OF SAID NE 1/4;
THENCE WEST (ASSUMED BEARING) 2669.97 FEET ON THE NORTH LINE OF SAID NE 1/4 TO THE NW CORNER THEREOF;
THENCE EAST 500.00 FEET ON THE WEST LINE OF SAID NE 1/4;
THENCE EAST 2060.62 FEET ON A LINE 915.00 FEET SOUTH OF AND PARALLEL WITH THE NORTH LINE OF SAID NE 1/4;
THENCE SOUTH 288.00 FEET;
THENCE EAST 616.27 FEET ON A LINE 1203.00 FEET SOUTH OF AND PARALLEL WITH THE NORTH LINE OF SAID NE 1/4 TO THE EAST LINE THEREOF;
THENCE N00748'08"W 1203.12 FEET ON THE EAST LINE OF SAID NE 1/4 TO THE POINT OF BEGINNING.

KNOWN ALL MEN BY THESE PRESENTS, THAT WE, HILLTOP INDUSTRIAL PARK, LLC, A NEBRASKA LIMITED LIABILITY COMPANY, THE MANAGER, WITHIN THE SURVEYOR'S CERTIFICATE AND MORTGAGE HOLDER OF THE LAND DESCRIBED WITHIN THIS PLAT, HAVE CAUSED SAID LAND TO BE SUBDIVIDED INTO STREETS AND LOTS TO BE NAMED AND NUMBERED AS SHOWN, SAID SUBDIVISION TO BE HEREINAFTER KNOWN AS OUR PROPERTY AS SHOWN ON THIS PLAT, AND WE HEREBY DEDICATE TO THE PUBLIC FOR PUBLIC USE, THE STREETS AS SHOWN ON THIS PLAT, AND WE DO FURTHER GRANT A PERPETUAL EASEMENT TO THE OMAHA PUBLIC POWER DISTRICT AND J.S. WEST COMMUNICATIONS, INC., AND ANY COMPANY TO BE SUCCESSORS, THEIR SUCCESSORS AND ASSIGNS TO ERECT, OPERATE, MAINTAIN, REPAIR AND RENEW POLES, WIRES, CROSSARMS, DOWN GUYS AND ANCHORS, CABLES, CONDUITS AND OTHER RELATED FACILITIES AND TO EXTEND THEREON WIRES OR CABLES FOR THE CARRYING AND TRANSMISSION OF ELECTRIC CURRENT OR LIGHT, HEAT, RECEPTION THEREOF INCLUDING SIGNALS PROVIDED BY A CABLE TELEVISION SYSTEM AND THEIR RECEPTION, ON, OVER THROUGH, UNDER AND ACROSS A FIVE (5) FOOT WIDE STRIP OF LAND ABUTTING ALL FRONT AND SIDE BOUNDARY LOT LINES, AND AN EIGHT (8) FOOT WIDE STRIP OF LAND ABUTTING ALL REAR BOUNDARY LOT LINES, AND SAID EASEMENT WAYS, BUT THE SAME MAY BE USED FOR GARDENS, SHRUBS, LANDSCAPING, SIDEWALKS, DRIVEWAYS, AND OTHER PURPOSES THAT DO NOT THEN OR LATER INTERFERE WITH THE AFORESAID USES OR RIGHTS HEREBY GRANTED.

HILLTOP INDUSTRIAL PARK, LLC
A NEBRASKA LIMITED LIABILITY COMPANY
BY: RUDY R. MUDRA, PRESIDENT
SENIOR VICE PRESIDENT

ACKNOWLEDGEMENT OF NOTARY
STATE OF NEBRASKA)
COUNTY OF DOUGLAS) SS
I, PAULIE, 1997 BY RUDY R. MUDRA, PRESIDENT OF HILLTOP INDUSTRIAL PARK, LLC, A NEBRASKA LIMITED LIABILITY COMPANY, ON BEHALF SAID COMPANY.

ACKNOWLEDGEMENT OF NOTARY
STATE OF NEBRASKA)
COUNTY OF DOUGLAS) SS
I, PAULIE, 1997 BY LARRY W. MARINOVIC, SENIOR VICE PRESIDENT OF AMERICAN NATIONAL BANK, ON BEHALF OF SAID BANK.

APPROVAL OF SAPPY COUNTY PLANNING COMMISSION
THIS PLAT OF HILLTOP INDUSTRIAL PARK WAS APPROVED BY THE PLANNING COMMISSION THIS 25th DAY OF APRIL, 1997.

APPROVAL OF SAPPY COUNTY BUILDING INSPECTOR
THIS PLAT OF HILLTOP INDUSTRIAL PARK WAS APPROVED BY THE SAPPY COUNTY BUILDING INSPECTOR THIS 25th DAY OF APRIL, 1997.

APPROVAL OF SAPPY COUNTY SURVEYOR
THIS PLAT OF HILLTOP INDUSTRIAL PARK WAS APPROVED BY THE SAPPY COUNTY SURVEYOR THIS 25th DAY OF APRIL, 1997.

SAPPY COUNTY TREASURER'S CERTIFICATE
I HEREBY CERTIFY THAT THE RECORDS OF MY OFFICE SHOW NO TAXES DUE OR ACCRUED UPON THE LAND DESCRIBED IN THE SURVEYOR'S CERTIFICATE AS THIS PLAT HAS BEEN FILED FOR THE 25th DAY OF APRIL, 1997. CURRENT TAXES ARE EITHER DUE OR PAID. TREASURER'S CERTIFICATION IS ONLY VALID UNTIL DECEMBER 31st OF THIS YEAR.

APPROVAL OF SAPPY COUNTY BOARD OF COMMISSIONERS
THIS PLAT OF HILLTOP INDUSTRIAL PARK WAS APPROVED BY THE BOARD OF COMMISSIONERS THIS 25th DAY OF APRIL, 1997.

APPROVAL OF SAPPY COUNTY PLANNING COMMISSION
THIS PLAT OF HILLTOP INDUSTRIAL PARK WAS APPROVED BY THE PLANNING COMMISSION THIS 25th DAY OF APRIL, 1997.

SAPPY COUNTY TREASURER'S CERTIFICATE
I HEREBY CERTIFY THAT THE RECORDS OF MY OFFICE SHOW NO TAXES DUE OR ACCRUED UPON THE LAND DESCRIBED IN THE SURVEYOR'S CERTIFICATE AS THIS PLAT HAS BEEN FILED FOR THE 25th DAY OF APRIL, 1997. CURRENT TAXES ARE EITHER DUE OR PAID. TREASURER'S CERTIFICATION IS ONLY VALID UNTIL DECEMBER 31st OF THIS YEAR.

APPROVAL OF SAPPY COUNTY BUILDING INSPECTOR
THIS PLAT OF HILLTOP INDUSTRIAL PARK WAS APPROVED BY THE SAPPY COUNTY BUILDING INSPECTOR THIS 25th DAY OF APRIL, 1997.

APPROVAL OF SAPPY COUNTY SURVEYOR
THIS PLAT OF HILLTOP INDUSTRIAL PARK WAS APPROVED BY THE SAPPY COUNTY SURVEYOR THIS 25th DAY OF APRIL, 1997.

SAPPY COUNTY TREASURER'S CERTIFICATE
I HEREBY CERTIFY THAT THE RECORDS OF MY OFFICE SHOW NO TAXES DUE OR ACCRUED UPON THE LAND DESCRIBED IN THE SURVEYOR'S CERTIFICATE AS THIS PLAT HAS BEEN FILED FOR THE 25th DAY OF APRIL, 1997. CURRENT TAXES ARE EITHER DUE OR PAID. TREASURER'S CERTIFICATION IS ONLY VALID UNTIL DECEMBER 31st OF THIS YEAR.

APPROVAL OF SAPPY COUNTY BOARD OF COMMISSIONERS
THIS PLAT OF HILLTOP INDUSTRIAL PARK WAS APPROVED BY THE BOARD OF COMMISSIONERS THIS 25th DAY OF APRIL, 1997.

APPROVAL OF SAPPY COUNTY PLANNING COMMISSION
THIS PLAT OF HILLTOP INDUSTRIAL PARK WAS APPROVED BY THE PLANNING COMMISSION THIS 25th DAY OF APRIL, 1997.

SAPPY COUNTY TREASURER'S CERTIFICATE
I HEREBY CERTIFY THAT THE RECORDS OF MY OFFICE SHOW NO TAXES DUE OR ACCRUED UPON THE LAND DESCRIBED IN THE SURVEYOR'S CERTIFICATE AS THIS PLAT HAS BEEN FILED FOR THE 25th DAY OF APRIL, 1997. CURRENT TAXES ARE EITHER DUE OR PAID. TREASURER'S CERTIFICATION IS ONLY VALID UNTIL DECEMBER 31st OF THIS YEAR.

97-19756

DATE: MAY 26, 1997
DRAWN BY: RJR
CHECKED BY: JDM
FINAL PLAT

THOMPSON, DRESSEN & DORNER, INC.
CONSULTING ENGINEERS & LAND SURVEYORS
10836 OLD MILL RD.
OMAHA, NE 68154
(402) 330-3860

AMERICAN NATIONAL BANK
NOTARY PUBLIC
019756

APPROVAL OF SAPPY COUNTY BOARD OF COMMISSIONERS
THIS PLAT OF HILLTOP INDUSTRIAL PARK WAS APPROVED BY THE BOARD OF COMMISSIONERS THIS 25th DAY OF APRIL, 1997.

APPROVAL OF SAPPY COUNTY PLANNING COMMISSION
THIS PLAT OF HILLTOP INDUSTRIAL PARK WAS APPROVED BY THE PLANNING COMMISSION THIS 25th DAY OF APRIL, 1997.

SAPPY COUNTY TREASURER'S CERTIFICATE
I HEREBY CERTIFY THAT THE RECORDS OF MY OFFICE SHOW NO TAXES DUE OR ACCRUED UPON THE LAND DESCRIBED IN THE SURVEYOR'S CERTIFICATE AS THIS PLAT HAS BEEN FILED FOR THE 25th DAY OF APRIL, 1997. CURRENT TAXES ARE EITHER DUE OR PAID. TREASURER'S CERTIFICATION IS ONLY VALID UNTIL DECEMBER 31st OF THIS YEAR.

APPROVAL OF SAPPY COUNTY BUILDING INSPECTOR
THIS PLAT OF HILLTOP INDUSTRIAL PARK WAS APPROVED BY THE SAPPY COUNTY BUILDING INSPECTOR THIS 25th DAY OF APRIL, 1997.

APPROVAL OF SAPPY COUNTY SURVEYOR
THIS PLAT OF HILLTOP INDUSTRIAL PARK WAS APPROVED BY THE SAPPY COUNTY SURVEYOR THIS 25th DAY OF APRIL, 1997.

646-119