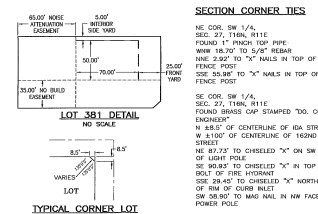


DEED 2017-034475
REV 03 2017 12:39 P 12

Handwritten notes and signatures at the top left of the plat.



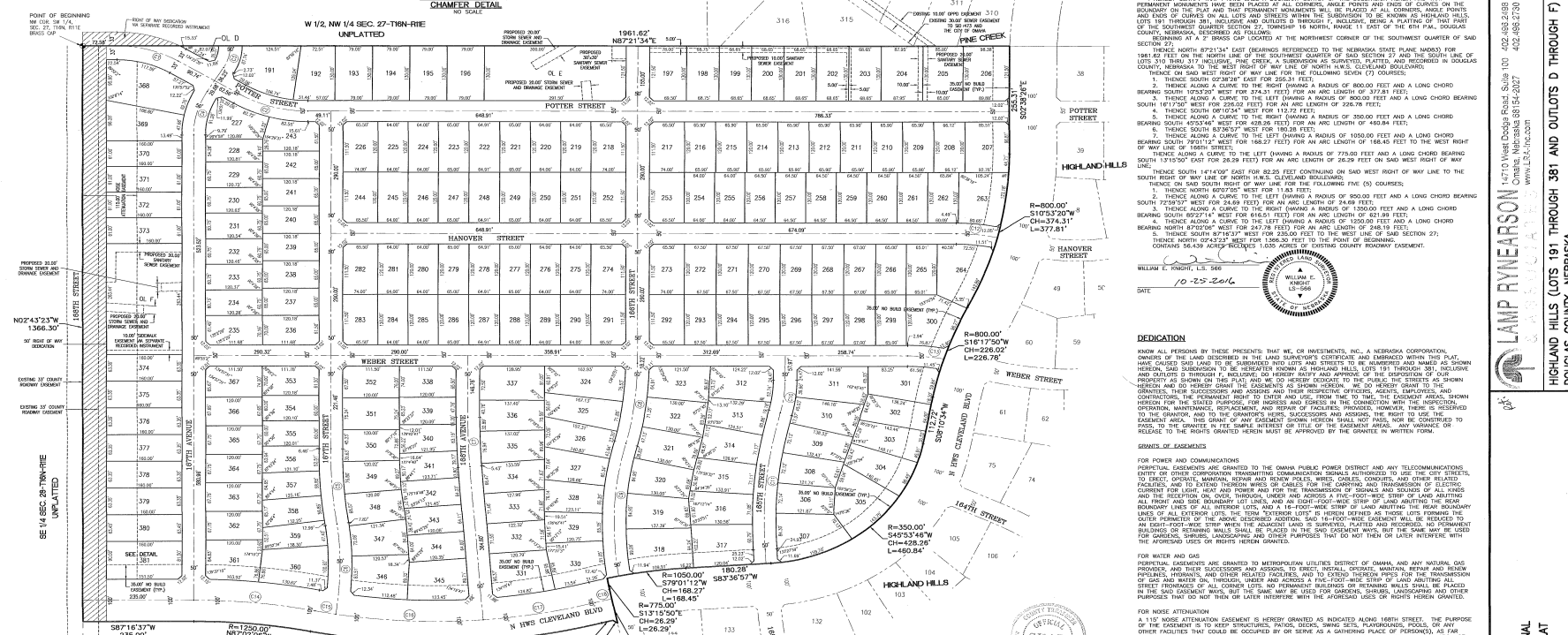
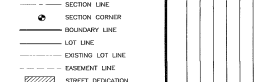
NE COR. SW 1/4, SEC. 27, T18N, R11E...
SW COR. SW 1/4, SEC. 27, T18N, R11E...
Notes regarding corner measurements and bearings.

- NOTES: 1. ALL DISTANCES ARE SHOWN IN DECIMAL FEET... 2. ALL DISTANCES SHOWN ALONG CURVES ARE... 3. ALL LOTS OR LINES ON CURVED STREETS ARE...

HIGHLAND HILLS

LOTS 191 THROUGH 381, INCLUSIVE AND OUTLOTS D THROUGH F, INCLUSIVE, BEING A PLATTING OF THAT PART OF THE SOUTHWEST QUARTER SECTION 27, TOWNSHIP 18 NORTH, RANGE 11 EAST OF THE 6TH P.M., DOUGLAS COUNTY, NEBRASKA

LOCATED IN: NE 1/4 SW 1/4 SEC. 27-18-11... NW 1/4 SW 1/4 SEC. 27-18-11



LAND SURVEYOR'S CERTIFICATE: I HEREBY CERTIFY THAT I HAVE MADE A BOUNDARY SURVEY OF THE SUBDIVISION HEREIN AND THAT PERMANENT MONUMENTS HAVE BEEN PLACED AT ALL CORNERS, ANGLES, POINTS AND THE POINTS OF CURVES ON THE PLAT...

DEDICATION: KNOW ALL PERSONS BY THESE PRESENTS THAT WE, OR INVESTMENTS, INC., A NEBRASKA CORPORATION, OWNER OF THE LAND DESCRIBED IN THE LAND SURVEYOR'S CERTIFICATE AND EMBRACED WITHIN THIS PLAT...

GRANTS OF EASEMENTS: FOR POWER AND COMMUNICATIONS: PERMITAL EASEMENTS ARE GRANTED TO THE OMAHA PUBLIC POWER DISTRICT AND ANY TELECOMMUNICATIONS SOCIETY OF OTHER CORPORATION... FOR WATER AND GAS: PERMITAL EASEMENTS ARE GRANTED TO METROPOLITAN UTILITIES DISTRICT OF OMAHA...

COUNTY TREASURER'S CERTIFICATE: THIS IS TO CERTIFY THAT I FIND NO REGULAR NON-SPECIAL VENDOR OR DEBITMENT AGAINST THE PROPERTY DESCRIBED IN THE LAND SURVEYOR'S CERTIFICATE AND EMBRACED IN THIS PLAT...



APPROVAL OF CITY ENGINEER OF OMAHA: I HEREBY APPROVE THIS PLAT OF HIGHLAND HILLS LOTS 191 THROUGH 381, INCLUSIVE AND OUTLOTS D THROUGH F, INCLUSIVE AS TO THE DESIGN STANDARDS.

APPROVAL OF OMAHA CITY PLANNING BOARD: THIS PLAT OF HIGHLAND HILLS LOTS 191 THROUGH 381, INCLUSIVE AND OUTLOTS D THROUGH F, INCLUSIVE WAS APPROVED BY THE OMAHA CITY PLANNING BOARD THIS 5th day of October, 2016.

Table with columns: PARCEL AREA TABLE, CENTERLINE CURVE TABLE, and REVIEW BY DOUGLAS COUNTY ENGINEER. Includes numerical data for parcels and curves.

CENTERLINE CURVE TABLE: Lists curve data including curve #, radius, length, chord, and deflection angle.

REVIEW BY DOUGLAS COUNTY ENGINEER: THIS PLAT OF HIGHLAND HILLS LOTS 191 THROUGH 381, INCLUSIVE AND OUTLOTS D THROUGH F, INCLUSIVE WAS REVIEWED BY THE DOUGLAS COUNTY ENGINEER'S OFFICE.

Vertical text on the right side: HIGHLAND HILLS (LOTS 191 THROUGH 381 AND OUTLOTS D THROUGH F) DOUGLAS COUNTY, NEBRASKA

Vertical text on the right side: LAMP RIVEARSON 1470 West Dodge Road, Suite 100, Omaha, Nebraska 68104

Vertical text on the right side: FINAL PLAT, COUNTY OF Douglas, STATE OF Nebraska, and other administrative markings.