

HIGHLAND ESTATES

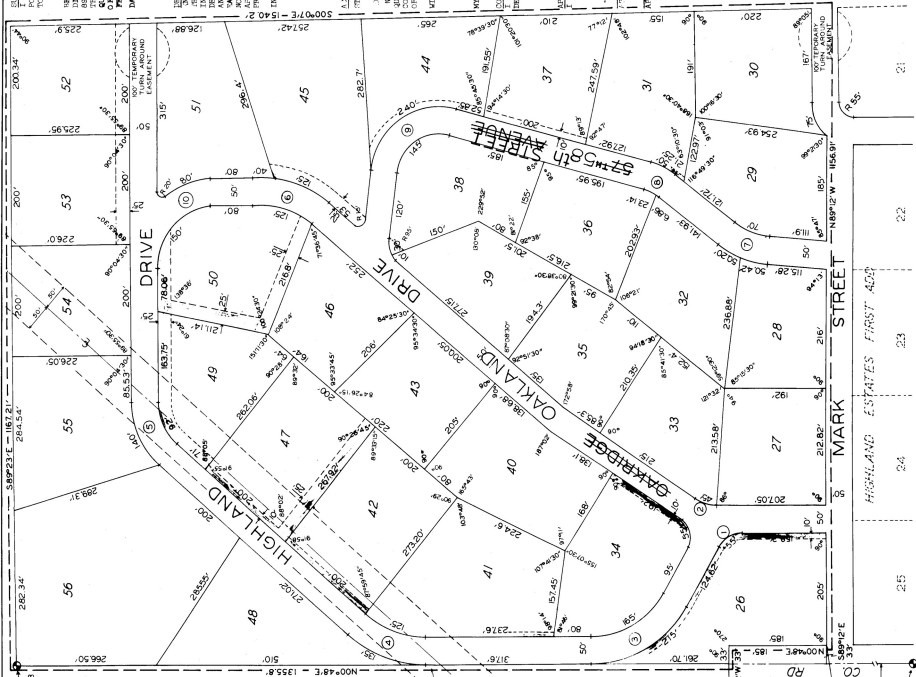
LOTS 26 THRU 56, INCLUSIVE, BEING A PLATTING OF PART OF THE NW1/4 OF SECTION 31-T14N-R16E OF THE 6TH P.M., SARRY COUNTY, NEBRASKA.

N
SCALE 1" = 100'

100' OVERHEAD EASEMENT

CURVE	Δ	RADIUS	TANGENT
1	59°56'	75'	43.71'
2	33°17'	100'	28.89'
3	59°57'	189'	106.70'
4	40°09'	200'	74.41'
5	48°59'	129'	56.83'
6	33°17'	100'	28.89'
7	33°00'	100'	44.46'
8	22°34'	109'	20.95'
9	98°22'	109'	121.22'
10	82°48'	136.5'	122.10'

LEGEND
POWER EASEMENT'S
UNDERGROUND



SECTION 31, T14N, R16E, SARRY COUNTY, NEBRASKA. BEING THE SOUTH QUARTER OF SECTION 31, T14N, R16E, SARRY COUNTY, NEBRASKA. BEING THE SOUTH QUARTER OF SECTION 31, T14N, R16E, SARRY COUNTY, NEBRASKA. BEING THE SOUTH QUARTER OF SECTION 31, T14N, R16E, SARRY COUNTY, NEBRASKA. BEING THE SOUTH QUARTER OF SECTION 31, T14N, R16E, SARRY COUNTY, NEBRASKA.

SECTION 31, T14N, R16E, SARRY COUNTY, NEBRASKA. BEING THE SOUTH QUARTER OF SECTION 31, T14N, R16E, SARRY COUNTY, NEBRASKA. BEING THE SOUTH QUARTER OF SECTION 31, T14N, R16E, SARRY COUNTY, NEBRASKA. BEING THE SOUTH QUARTER OF SECTION 31, T14N, R16E, SARRY COUNTY, NEBRASKA. BEING THE SOUTH QUARTER OF SECTION 31, T14N, R16E, SARRY COUNTY, NEBRASKA.

SECTION 31, T14N, R16E, SARRY COUNTY, NEBRASKA. BEING THE SOUTH QUARTER OF SECTION 31, T14N, R16E, SARRY COUNTY, NEBRASKA. BEING THE SOUTH QUARTER OF SECTION 31, T14N, R16E, SARRY COUNTY, NEBRASKA. BEING THE SOUTH QUARTER OF SECTION 31, T14N, R16E, SARRY COUNTY, NEBRASKA. BEING THE SOUTH QUARTER OF SECTION 31, T14N, R16E, SARRY COUNTY, NEBRASKA.

SECTION 31, T14N, R16E, SARRY COUNTY, NEBRASKA. BEING THE SOUTH QUARTER OF SECTION 31, T14N, R16E, SARRY COUNTY, NEBRASKA. BEING THE SOUTH QUARTER OF SECTION 31, T14N, R16E, SARRY COUNTY, NEBRASKA. BEING THE SOUTH QUARTER OF SECTION 31, T14N, R16E, SARRY COUNTY, NEBRASKA. BEING THE SOUTH QUARTER OF SECTION 31, T14N, R16E, SARRY COUNTY, NEBRASKA.

SECTION 31, T14N, R16E, SARRY COUNTY, NEBRASKA. BEING THE SOUTH QUARTER OF SECTION 31, T14N, R16E, SARRY COUNTY, NEBRASKA. BEING THE SOUTH QUARTER OF SECTION 31, T14N, R16E, SARRY COUNTY, NEBRASKA. BEING THE SOUTH QUARTER OF SECTION 31, T14N, R16E, SARRY COUNTY, NEBRASKA. BEING THE SOUTH QUARTER OF SECTION 31, T14N, R16E, SARRY COUNTY, NEBRASKA.

SECTION 31, T14N, R16E, SARRY COUNTY, NEBRASKA. BEING THE SOUTH QUARTER OF SECTION 31, T14N, R16E, SARRY COUNTY, NEBRASKA. BEING THE SOUTH QUARTER OF SECTION 31, T14N, R16E, SARRY COUNTY, NEBRASKA. BEING THE SOUTH QUARTER OF SECTION 31, T14N, R16E, SARRY COUNTY, NEBRASKA. BEING THE SOUTH QUARTER OF SECTION 31, T14N, R16E, SARRY COUNTY, NEBRASKA.

FILED FOR RECORD IN SARRY COUNTY NEB - Oct 4 - 1966 at 9:45 AM by J. J. ...
A.D. 1966
REGISTER OF DEEDS