

LEAVE TO
T-4-12

Hickory Hill

Plat 8-38
Plat 8-21
Plat 8-18
Plat 7-93
Plat 8-7
Declan Couts 55-690
Declan Couts 55-755
Declan Couts 56-301
Declan Couts 56-792
SID 121 1-297
Ease 45-104
Ease 44-523
Declan Couts 52-453
Ease 45-102
Ease 45-103
SID 91-20747
SID 1-297
Row Ease 52-466
Row Ease 56-370
Ease 52-494
~~Disclaim 52-~~
WD 154-44
Ease 8-308
Ease 12-608
Assign 126-277
Aff 52-62
Pt Rel 52-226
WD 154-45
WD 154-46
QCD 154-763
WD 155-3223
MH 192-72
MH 192-71
Rel 203-215
Pt Rel 199-5115

Assign 203-136
Rel 203-216
Pt Rel 199-5636
n/c 2-327
SID 1-240
SID 1-73
SID 1-240
SID 2-104
SID 2-171
SID 3-20
SID 2-49

TA-17542 - Lot 370

TA-19866 - Lot 117

TA-20475 - Lot 289

TA-20603 - Lot 258

TA 21275 Lot 229

TA-21554 Lot 440

TA-22023 Lot 133

TA-22074 Lot 379

TA-22079 Lot 458

TA-22022 Lot 240

TA-22308 Lot 307

TA-22562 Lot 408

TA-23052 Lot 159

TA-23075 Lot 285

TA-23103 Lot 152

TA 23190 Lot 250

TA-23274 Lot 300

TA-23325 Lot 164

TA-23325 Lot 164

TA 12393 - Lot 243

TA 12687 - Lot 283

TA 12680 - Lot 223

TA 13045 - Lot 405

TA 13220 - Lot 13

TA 13441 Lot 328

TA-13997 Lot 298

TA-14173 Lot 178

TA-14365 Lot 501

~~TA-14553~~ Lot 69

TA-14653 Lot 403

TA-15098 Lot 318

TA-15405 Lot 260

TA-15968 Lot 370

TA-16228 Lot 337

TA-6924 Lot 86

TA 7336 Lot 130

TA 7680 Lot 110

TA 7885 Lot 93

TA 7918 Lot 58

TA 8055 Lot 68

TA 8063 Lot 240

TA 8840 Lot 108

TA 8996 Lot 58

TA 9255 Lot 32

TA 9665 Lot 265

TA 9977 Lot 188

TA 10347 - Lot 263

TA 10580 - Lot 105

TA 10776 - Lot 15

TA 11089 - Lot 206

TA 11152 - Lot 214

TA 11260 - Lot 258

TA 11466 - Lot 229

TA 11690 - Lot 112

TA 11929 - Lot 203

8-308 ^{see 52/62}

John L. Sautter & wife to Missouri Valley Pipe Line
Co. covers E $\frac{1}{2}$ of NW 4 + W 2 of NE 4 of Sec 23-14-12

12-608 ^{see 52/286}

Mary H. Sautter et al. to Great Lakes Pipe Line Co.
Covers W 2 of NE 4 of Sec 23-14-12 + other notes on add.

126-277 ^{see 52-286}

Great Lakes to Williams Bros Pipe Line Co.
Assignment assigned 12/608 to Wm Bros.

52-62
affidavit

William Sautter as owner of E 2 of NW 4 of 23-14-12
is aware of case in 8/308 + states they have
never been utilized or exercised in any fashion
or manner whatsoever to the best of his knowledge.

52-286
rel

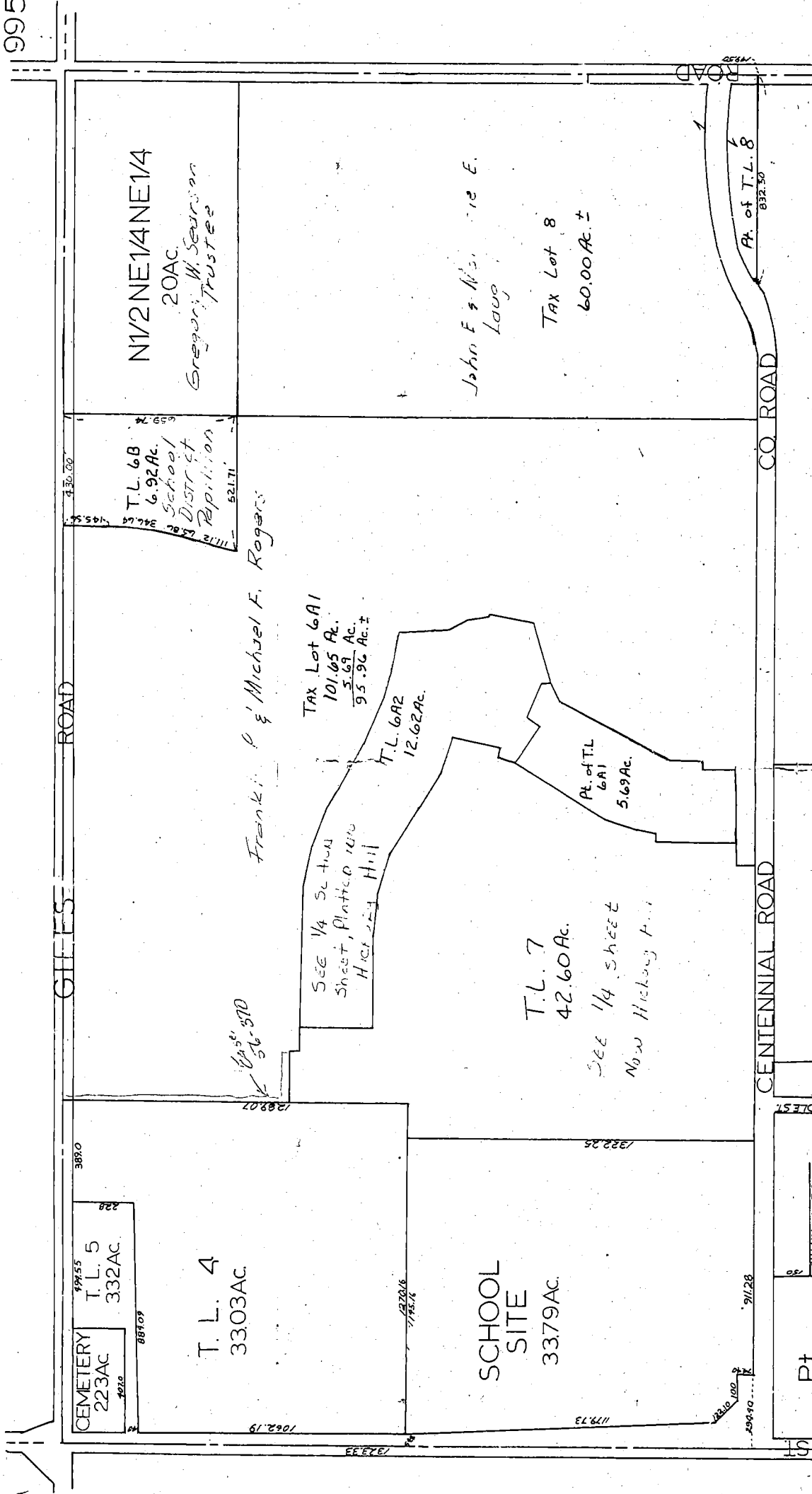
Wm Bros + Franklin + Michael Rogers
releases W 2 of NE 4 of 23-14-12 from 12/608 + 126/277.

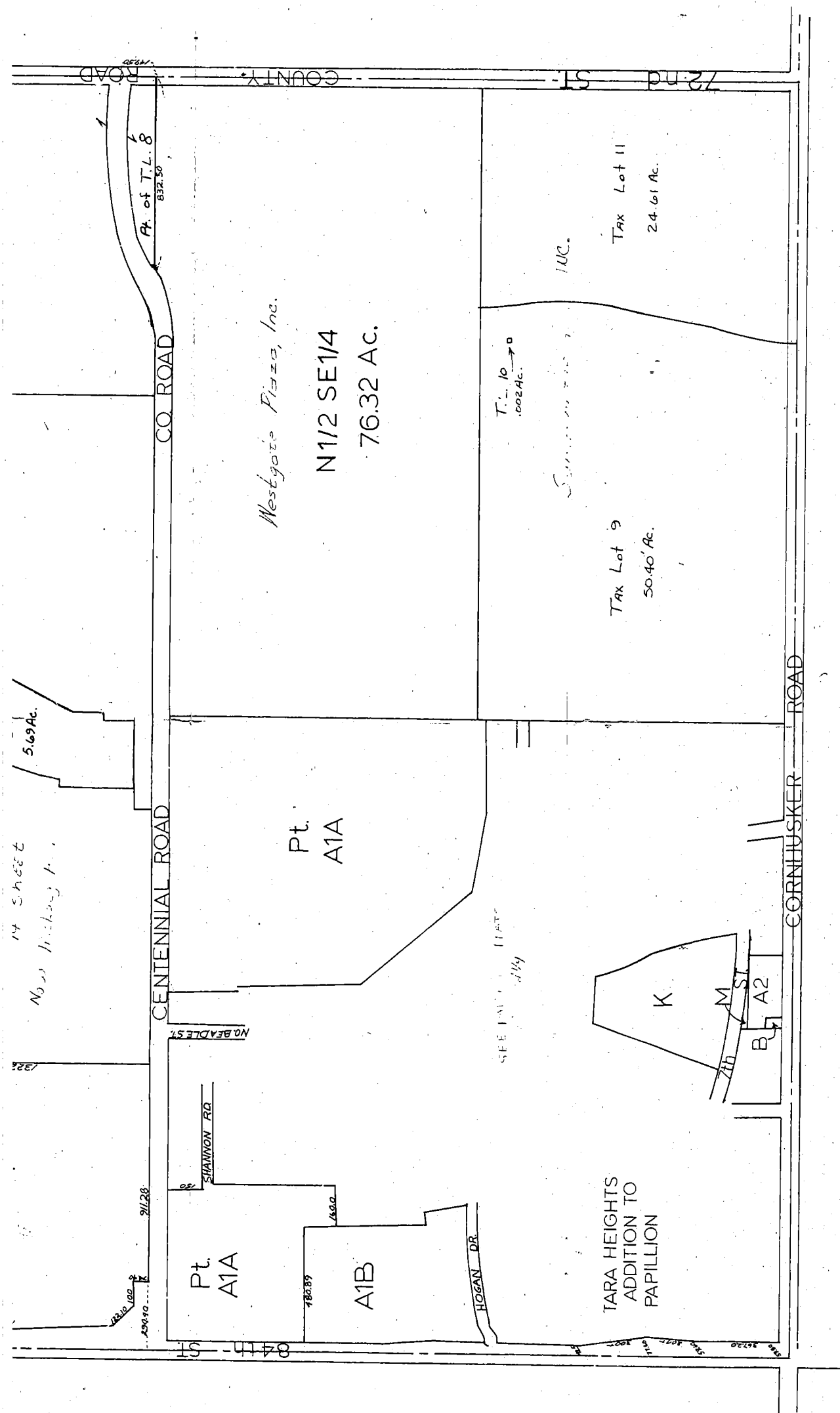
Hickory Hill (lots 1-133)

being a glattin of part of W 2 of NE 4 +
the E 2 of NW 4 , together w/ E 135' of SW 4 of NW 4
all in Section 23-14-12.

SEC.23 T14N-R12E
SCALE: 1" = 400'

995-98





SARPY COUNTY SURVEYOR'S OFFICE
MARCH 1959

(HICKIL.DOC)

MASTER FILE FOR HICKORY HILL

*check your lot; all easements may not be listed here.

Bill To Check

NOTE TO SEARCHER:

CHECK YOUR LOT TO SEE IF LAND EASEMENTS OR MORTGAGES AFFECT YOUR PROPERTY

AFFECTS LOTS 303 THRU 502

Easements granted for utilities by Plat and Dedication filed December 13, 1983, in Book 8 at Page 38 of the Plat Records of Sarpy County, Nebraska, on, over, through, under and across a five foot wide strip of land abutting the front and the side boundary lines of all lots; an eight foot wide strip of land abutting the rear boundary lines of all interior lots and all exterior lots that are adjacent to presently platted and recorded lots; and a sixteen foot wide strip of land abutting the rear boundary lines of exterior lots that are not adjacent to presently platted and recorded lots, with provision for said sixteen foot wide easement to be reduced to eight feet.

AFFECTS LOTS 134 THRU 180

Easements granted for utilities by Plat and Dedication filed October 26, 1982, in Book 8 at Page 7 of the Plat Records of Sarpy County, Nebraska, on, over, through, under and across a five foot wide strip of land abutting the front and the side boundary lines of all lots; an eight foot wide strip of land abutting the rear boundary lines of all interior lots and all exterior lots that are adjacent to presently platted and recorded lots; and a sixteen foot wide strip of land abutting the rear boundary lines of exterior lots that are not adjacent to presently platted and recorded lots, with provision for said sixteen foot wide easement to be reduced to eight feet.

AFFECTS LOTS 181 THRU 203

Easements granted for utilities by Plat and Dedication filed April 29, 1983, in Book 8 at Page 18 of the Plat Records of Sarpy County, Nebraska, on, over, through, under and across a five foot wide strip of land abutting the front and the side boundary lines of all lots; an eight foot wide strip of land abutting the rear boundary lines of all interior lots and all exterior lots that are adjacent to presently platted and recorded lots; and a sixteen foot wide strip of land abutting the rear boundary lines of exterior lots that are not adjacent to presently platted and recorded lots, with provision for said sixteen foot wide easement to be reduced to eight feet.

AFFECTS LOTS 204 THRU 302

Easements granted for utilities by Plat and Dedication filed May 19, 1983, in Book 8 at Page 21 of the Plat Records of Sarpy County, Nebraska, on, over, through, under and across a five foot wide strip of land abutting the front and side boundary lines of all lots; an eight foot wide strip of land abutting the rear boundary lines of all interior lots and all exterior lots that are adjacent to presently platted and recorded lots; and a sixteen foot wide strip of land abutting the rear boundary lines of all exterior lots that are not adjacent to presently platted and recorded lots, with provision for said sixteen foot wide easement to be reduced to eight feet.

AFFECTS LOTS 1 THRU 133

Easements granted for utilities by Plat and Dedication filed June 15, 1979, in Book 7 at Page 93 of the Plat Records of Sarpy County, Nebraska, on, over, through, under and across a five foot wide strip of land abutting the front and side boundary lines of all lots; an eight foot wide strip of land abutting the rear boundary lines of all interior lots and all exterior lots that are adjacent to presently platted and recorded lots; and a sixteen foot wide strip of land abutting the rear boundary lines of all exterior lots that are not adjacent to presently platted and recorded lots, with provision for said sixteen foot easement to be reduced to eight feet.

/ AFFECTS LOTS 303 THRU 501

Covenants, conditions and restrictions contained in instrument dated December 2, 1983, filed December 13, 1983, in Book 56 at Page 792 of the Miscellaneous Records of Sarpy County, Nebraska, which contains no forfeiture provision.

Easements granted for utilities therein affecting an eight foot wide strip of land adjoining the rear lines and a five foot wide strip of land adjoining the side boundary lines of said lots.

AFFECTS LOTS 1-26, 28-42, 44-98, AND 103-133

Covenants, conditions and restrictions contained in instrument dated April 19, 1979, filed July 13, 1979, in Book 52 at Page 453 of the Miscellaneous Records of Sarpy County, Nebraska, which contains no forfeiture provision.

Easements granted for utilities therein affecting an eight foot wide strip of land adjoining the rear lines and a five foot wide strip of land adjoining the side boundary lines of said lots.

AFFECTS LOTS 134 THRU 180

Covenants, conditions and restrictions contained in instrument dated October 7, 1982, filed October 26, 1982, in Book 55 at

Page 690 of the Miscellaneous Records of Sarpy County, Nebraska, which contains no forfeiture provision.

Easements granted for utilities therein affecting an eight foot wide strip of land adjoining the rear lines and a five foot wide strip of land adjoining the side boundary lines of said lots.

Amendment of Covenants, conditions and restrictions contained in instrument dated November 29, 1982, filed November 29, 1982, in Book 55 at Page 755 of the Miscellaneous Records of Sarpy County, Nebraska.

AFFECTS LOTS 181 THRU 302

Covenants, conditions and restrictions contained in instrument dated May 17, 1983, filed May 19, 1983, in Book 56 at Page 301 of the Miscellaneous Records of Sarpy County, Nebraska, which contains no forfeiture provision.

Easements granted for utilities therein affecting an eight foot wide strip of land adjoining the rear lines and a five foot wide strip of land adjoining the side boundary lines of said lots.

AFFECTS TAX LOT 2

Easement granted to Omaha Public Power District, by instrument dated October 11, 1971, filed November 1, 1971, in Book 44 at Page 523 of the Miscellaneous Records of Sarpy County, Nebraska, affecting a 170 feet wide strip of land adjacent to and parallel to the South line of said Tax Lot 2.