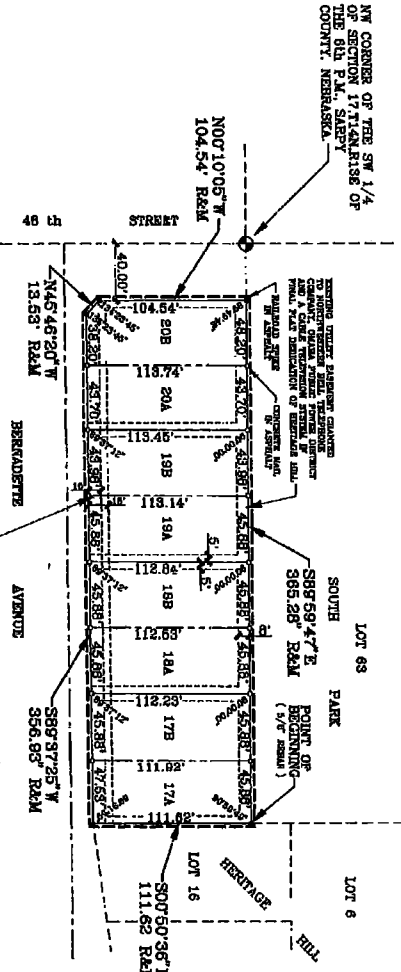


# HERITAGE HILL REPLAT 4

LOTS 17A thru 20A INCLUSIVE, AND LOTS 17B thru 20B, INCLUSIVE.

BEING A REPLATTING OF LOTS 17 THRU 20, HERITAGE HILL, A SUBDIVISION AS SURVEYED, PLATTED AND RECORDED IN THE NW 1/4 OF THE SW 1/4 OF SECTION 17, T14N, R15E OF THE 6th P.M., SARPY COUNTY, NEBRASKA.



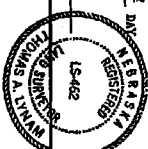
**LEGEND**

- CORNERS SET (T CTP UNLESS NOTED)
- CORNERS FOUND (S/T CTP UNLESS NOTED)
- UNSET CORNERS
- REPLATTED DISTANCE
- CHANGED TOP PIPE
- OPEN TOP PIPE
- CITY
- CTP

REVIEW BY SARPY COUNTY SURVEYOR

THIS PLAT OF HERITAGE HILL REPLAT 4 WAS REVIEWED AND ACCEPTED BY THE SARPY COUNTY SURVEYOR'S OFFICE ON THE 10<sup>th</sup> DAY OF April, 1983.

*Thompson, Dreesen & Dorner*  
SARPY COUNTY SURVEYOR



I, HERSEY COUNTY CLERK, HAVE MADE A HONORABLE STATE OF THE SUBDIVISION DESCRIBED HEREON AND THAT FROM THESE OR PERMANENT RECORDS HAVE BEEN FOUND OR SET AT ALL CORNERS OF SAID BOUNDARY AND THAT SAID CORNERS ARE OPEN AND KNOWN TO BE KNOWN TO THE PUBLIC. HERITAGE HILL, A SUBDIVISION AS SURVEYED, PLATTED AND RECORDED IN SARPY COUNTY, NEBRASKA, ALL LOTS PARTICULARLY DESCRIBED AS FOLLOWS: BEGINS AT THE NE CORNER OF SAID LOT 17, THEREBY SURVEYOR'S (ASSUMED BEARING) 111.82 FEET ON THE N87°48'38"W BOUNDARY OF THE SAID LOT 17 TO THE NE CORNER OF SAID LOT 17B, IN THE 50' WIDE STRIP OF THE STRIP OF SAID LOT 20, THENCE S89°59'47"E 385.25' FEET ON THE NORTH LINE OF SAID LOT 17 TO THE POINT OF BEGINNING.

SURVEYOR'S CERTIFICATE 93-12318

Filed for Record 6-4-93 at 12:17 PM  
Instrument # 93-012318  
Clerk A. Smith Register of Deed Sarpy Co NE

Profil	<i>[Signature]</i>
D.E.	<i>[Signature]</i>
Verify	<i>[Signature]</i>
Filed	<i>[Signature]</i>
Checked	<i>[Signature]</i>
Fee \$	<u>31.00</u>

*[Signature]*

JANUARY 25, 1983

DEDICATION

JAMES D. WARRNE, NEBRASKA P.L.S. 305

THE PLAT OF HERITAGE HILL REPLAT 4 WAS APPROVED BY THE CITY ENGINEER OF BELLEVUE THIS 24<sup>th</sup> DAY OF May, 1983.

APPROVAL BY CITY ENGINEER

*[Signature]*

THIS PLAT OF HERITAGE HILL REPLAT 4 WAS APPROVED BY THE CITY PLANNING DIRECTOR OF THE CITY OF BELLEVUE THIS 1<sup>st</sup> DAY OF May, 1983.

APPROVAL BY CITY PLANNING DIRECTOR

*[Signature]*

THIS IS TO CERTIFY THAT I FIND NO EQUITY OR SPECIAL TAXES, DUES OR DEMANDS, AGAINST THE PROPERTY DESCRIBED IN THE SURVEYOR'S CERTIFICATE AND EMBODIED IN THIS PLAT, AS SHOWN BY THE RECORDS OF THIS OFFICE, THIS 17<sup>th</sup> DAY OF May, 1983.

APPROVAL BY COUNTY TREASURER

*[Signature]*

THIS PLAT OF HERITAGE HILL REPLAT 4 WAS APPROVED BY THE PUBLIC WORKS DIRECTOR OF THE CITY OF BELLEVUE THIS 1<sup>st</sup> DAY OF May, 1983.

APPROVAL BY PUBLIC WORKS DIRECTOR

*[Signature]*

THIS PLAT OF HERITAGE HILL REPLAT 4 WAS APPROVED BY THE PUBLIC WORKS DIRECTOR OF THE CITY OF BELLEVUE THIS 1<sup>st</sup> DAY OF May, 1983.

APPROVAL BY PUBLIC WORKS DIRECTOR

*[Signature]*

APPROVAL BY CITY PLANNING DIRECTOR

*[Signature]*

THIS PLAT OF HERITAGE HILL REPLAT 4 WAS APPROVED BY THE CITY PLANNING DIRECTOR OF THE CITY OF BELLEVUE THIS 1<sup>st</sup> DAY OF May, 1983.

0122318



2 THOMPSON, DREESEN & DORNER  
Consulting Engineers & Land Surveyors

10838 OLD MILL ROAD  
OMAHA, NE 68164  
(402) 580 - 8880

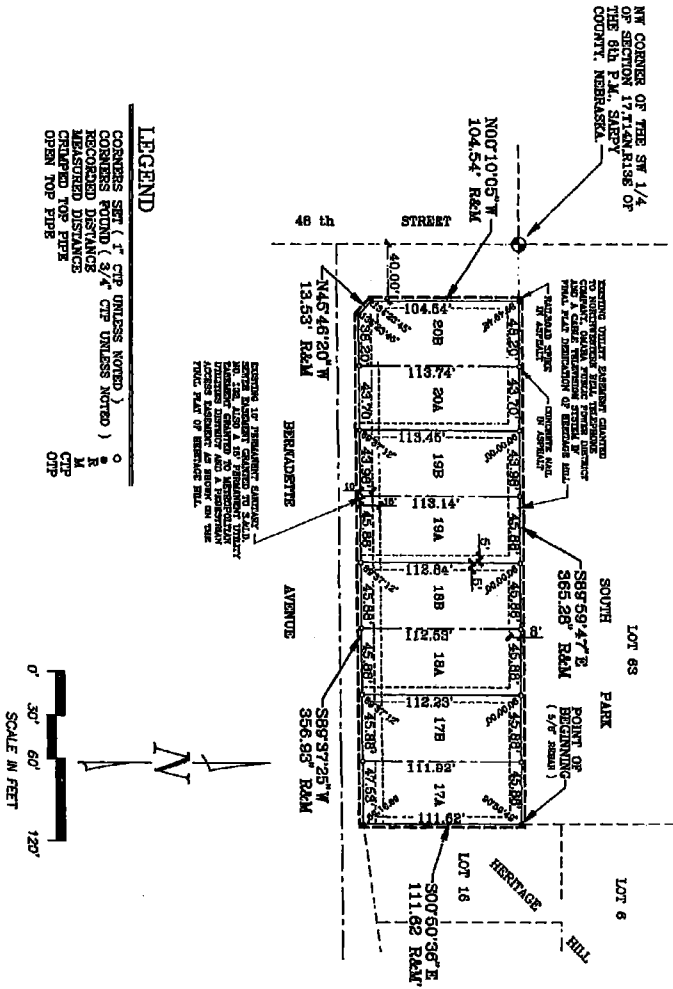
HERITAGE HILL REPLAT 4

FINAL PLAT

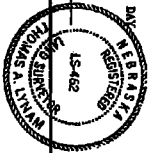
# HERITAGE HILL REPLAT 4

LOTS 17A thru 20A INCLUSIVE, AND LOTS 17B thru 20B, INCLUSIVE.

BEING A REPLATTING OF LOTS 17 THRU 20, HERITAGE HILL, A SUBDIVISION AS SURVEYED, PLATTED AND RECORDED IN THE NW 1/4 OF THE SW 1/4 OF SECTION 17, T14N, R18E OF THE 6th P.M., SARPY COUNTY, NEBRASKA.



REVIEW BY SARPY COUNTY SURVEYOR  
 THIS PLAT OF HERITAGE HILL REPLAT 4 WAS REVIEWED AND ACCEPTED BY THE SARPY COUNTY SURVEYOR'S OFFICE ON THE 10th DAY OF March, 1983.  
 SARPY COUNTY SURVEYOR



I, ENERGY CERTIFY THAT I HAVE MADE A THOROUGH SURVEY OF THE SUBDIVISION DESCRIBED HEREON AND THAT BOTH TYPES OF PERMANENT MARKERS HAVE BEEN FOUND OR SET AT ALL CORNERS OF SAID SUBDIVISION AND AT ALL LOT CORNERS WITHIN SAID SUBDIVISION TO BE KNOWN TO ALL PERSONS INTERESTED IN THE SAME. THE SURVEY WAS MADE AND THE MARKERS SET ON THE 17th DAY OF FEBRUARY, 1983. I HAVE ALSO PLATTED AND RECORDED THE SAID SUBDIVISION IN THE PUBLIC RECORDS OF THE COUNTY OF SARPY, NEBRASKA. THE SAID PLAT OF THE SAID SUBDIVISION IS FILED IN THE OFFICE OF THE COUNTY SURVEYOR OF SAID COUNTY AND IS AVAILABLE FOR INSPECTION BY ALL PERSONS INTERESTED IN THE SAME. I HEREBY CERTIFY AND WARRANT THAT THE SAID PLAT OF THE SAID SUBDIVISION IS TRUE AND CORRECT AND THAT I AM A LICENSED SURVEYOR IN THE STATE OF NEBRASKA. I HAVE ALSO CAUSED TO BE PLACED ON THE SAID PLAT SUCH MARKERS AS ARE NECESSARY TO DEFINE THE BOUNDARIES OF THE SAID SUBDIVISION AND THE SAID LOTS. I HAVE ALSO CAUSED TO BE PLACED ON THE SAID PLAT SUCH MARKERS AS ARE NECESSARY TO DEFINE THE BOUNDARIES OF THE SAID LOTS. I HAVE ALSO CAUSED TO BE PLACED ON THE SAID PLAT SUCH MARKERS AS ARE NECESSARY TO DEFINE THE BOUNDARIES OF THE SAID LOTS.

Filed For Record 6-4-83 at 12:17 PM  
 Instrument # 93-012318  
 Cecil A. Gault, Registrar of Deeds, Sarpy Co. NE.

JANUARY 26, 1983

Proof	✓
DE	✓
Verify	✓
Filed	21.02
Checked	

93-012318

JAMES J. WALKER, NEBRASKA P.L.S. 308



DEDICATION

KNOW ALL MEN BY THESE PRESENTS, THAT I, JAMES J. WALKER, REGISTERED PROFESSIONAL LAND SURVEYOR, BEING THE OWNER OF THE LAND DESCRIBED HEREIN, THE SURVEYORS CERTIFICATE AND WARRANTED WITHIN THIS PLAT HAVE CALLED SAID LAND TO BE SUBDIVIDED INTO SAID LOTS TO BE NUMBERED AS SHOWN SAID SUBDIVISION TO BE HEREAFTER KNOWN AS HERITAGE HILL REPLAT 4, AND I DO HEREBY DEDICATE AND APPROVE OF THE DEDICATION OF MY PROPERTY AS SHOWN ON THIS PLAT.

ACKNOWLEDGEMENT OF NOTARY

STATE OF NEBRASKA  
 COUNTY OF SARPY, NEBRASKA  
 THE FOREGOING DEDICATION WAS ACKNOWLEDGED BEFORE ME THIS 3rd DAY OF JANUARY, 1983 BY JAMES J. WALKER, REGISTERED PROFESSIONAL LAND SURVEYOR.

NOTARY PUBLIC  
 JAMES J. WALKER, NEBRASKA P.L.S. 308

COUNTY TREASURER'S CERTIFICATE

THIS IS TO CERTIFY THAT I FIND NO RECORDS OF SPECIAL TAXES, NOR OF DELINQUENT TAXES, AGAINST THE PROPERTY DESCRIBED IN THE SURVEYOR'S CERTIFICATE AND WARRANTED BY THIS PLAT, AS SHOWN BY THE RECORDS OF THIS OFFICE, THIS 27th DAY OF FEBRUARY, 1983.

APPROVAL BY CITY ENGINEER

CITY ENGINEER  
 JAMES J. WALKER, NEBRASKA P.L.S. 308

APPROVAL BY PUBLIC WORKS DIRECTOR

PUBLIC WORKS DIRECTOR  
 JAMES J. WALKER, NEBRASKA P.L.S. 308

APPROVAL BY CITY PLANNING DIRECTOR

CITY PLANNING DIRECTOR  
 JAMES J. WALKER, NEBRASKA P.L.S. 308

THIS PLAT OF HERITAGE HILL REPLAT 4 WAS APPROVED BY THE CITY ENGINEER OF BELLEVUE THE 15th DAY OF FEBRUARY, 1983.

THIS PLAT OF HERITAGE HILL REPLAT 4 WAS APPROVED BY THE CITY PLANNING DIRECTOR OF THE CITY OF BELLEVUE THE 15th DAY OF FEBRUARY, 1983.

P

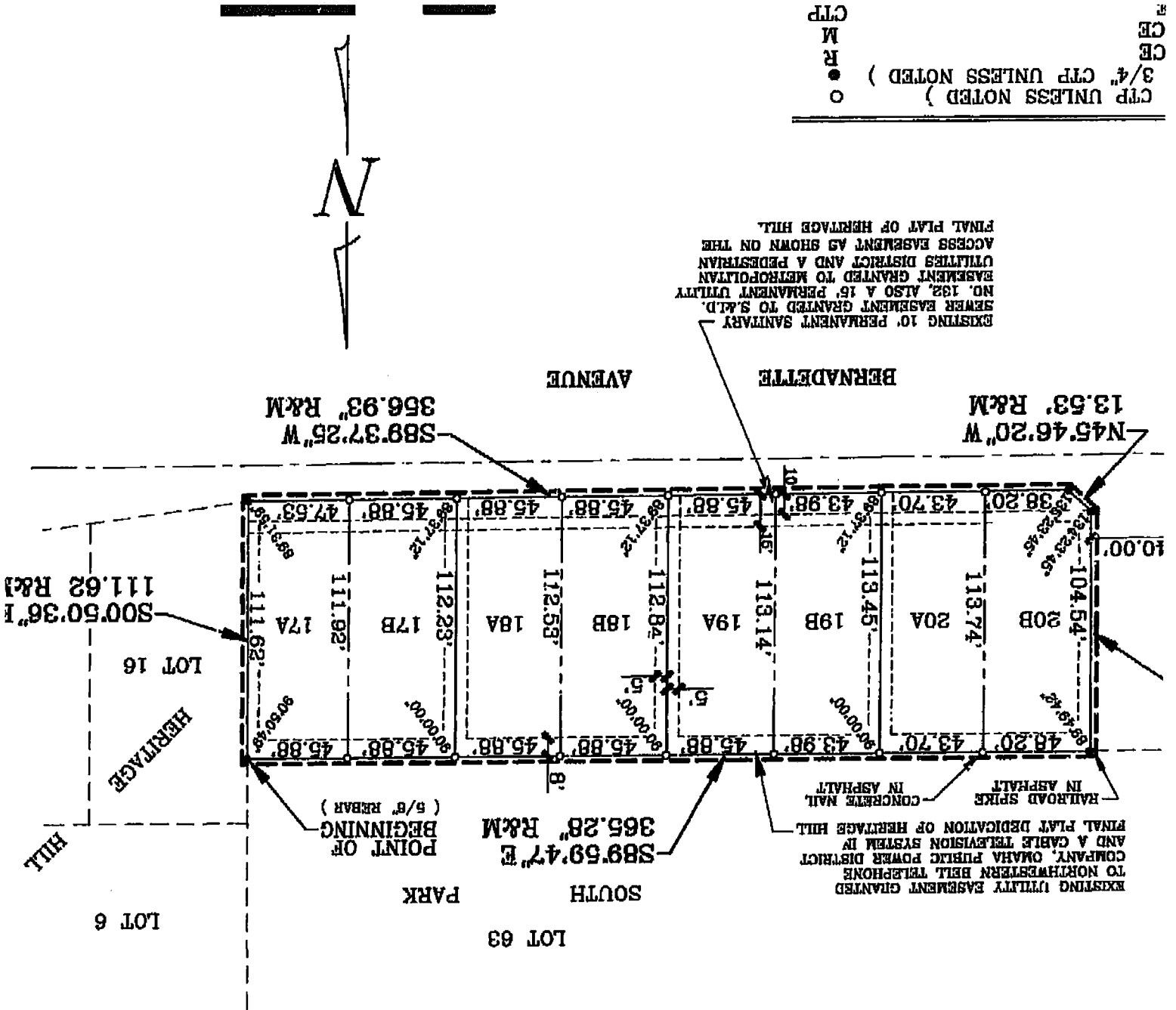
**2 THOMPSON, DREESSEN & DORNER**  
 Consulting Engineers & Land Surveyors

10836 OLD MILL ROAD  
 OMAHA, NE 68164  
 (402) 330 - 8860

HERITAGE HILL REPLAT 4

FINAL PLAT

ATTING OF LOTS 17 THRU 20, HERITAGE HILL, A SUBDIVISION  
 PLATTED AND RECORDED IN THE NW 1/4 OF THE SW 1/4  
 7, T14N, R13E OF THE 6th P.M., SARPY COUNTY, NEBRASKA.



CTP UNLESS NOTED )  
 3/4" CTP UNLESS NOTED )  
 ● R  
 M  
 CE  
 CE  
 CTP