

A F F I D A V I T

Compared

STATE OF IOWA)
COUNTY OF STORY) ss

I, L. M. Clauson, being duly sworn upon my oath depose and state that I am the Deputy Chief Engineer of the Iowa State Highway Commission, and that I am acting as the custodian of the Controlled Access Records for the Chief Engineer of said Commission, and that the attached Resolution of controlled access was adopted by the Iowa State Highway Commission on the date indicated thereon, and as a result thereof, the rights of access are controlled on the property abutting the primary highways described on the attached sheet and on the map attached hereto; each of said attached documents being made a part hereof by reference.

Signed at Ames, Iowa this ___ day of _____, 1956.

L. M. Clauson

On this, ___ day of _____ A.D. 1956 before me a Notary Public in and for Story County, Iowa, personally appeared L. M. Clauson, Deputy Chief Engineer of the Iowa State Highway Commission, to me known to be the person named in and who executed the foregoing instrument, and acknowledged that he executed the same as his voluntary act and deed.

Notary Public in and for Story County, Iowa

Compared

RESOLUTION

BE IT RESOLVED by the Iowa State Highway Commission:

That the Commission finds, determines, and declares that for the immediate preservation of the public peace, health, and safety, and for the promotion of the general welfare, the rights of direct access to, from, and across Primary Highway Number Ia. 100 as set out on the attached map and identified as Project Number F-773(5) Pottawattamie County, and more specifically described as follows:

Beginning at Sta. 1110 + 02.6 and ending at Sta. 1135 + 00

shall be controlled under the authority and provisions of Chapter 148, Acts of the 56th General Assembly. The Chief Engineer is hereby authorized and directed to acquire, by the exercise of eminent domain or otherwise, the necessary right of way to carry out the purposes expressed in Chapter 148 and in this resolution, and also to acquire the right of ingress and egress to control the access to said highway.

Resolution adopted by the Commission on

March 20, 1956 (Date)

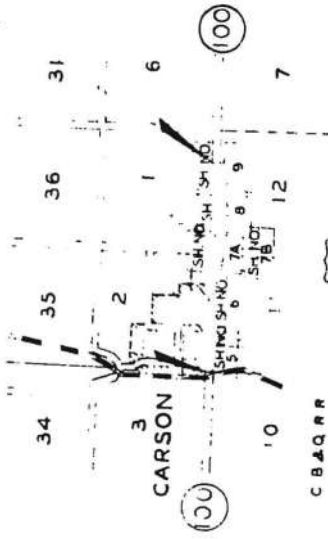
STA. 1110 + 03.6
BEG. OF PROJECT
A.C. PAVING

STA. 1195 + 00.0
END OF PROJECT
A.C. PAVING

R - 40 W



T-74N



LAYOUT
SCALE 1 INCH = 1 MILE

RESOLUTION

BE IT RESOLVED by the Iowa State Highway Commission:

That the Commission finds, determines, and declares that for the immediate preservation of the public peace, health, and safety, and for the promotion of the general welfare, the rights of direct access to, from, and across Primary Highway Number Ia 100 as set out on the attached map and identified as Project Number E-773(4) Pottawattamie County, and more specifically described as follows:

Beginning at Sta. 623 + 44.0 and ending at Sta. 1109 + 91.3

shall be controlled under the authority and provisions of Chapter 148, Acts of the 56th General Assembly. The Chief Engineer is hereby authorized and directed to acquire, by the exercise of eminent domain or otherwise, the necessary right of way to carry out the purposes expressed in Chapter 148 and in this resolution, and also to acquire the right of ingress and egress to control the access to said highway.

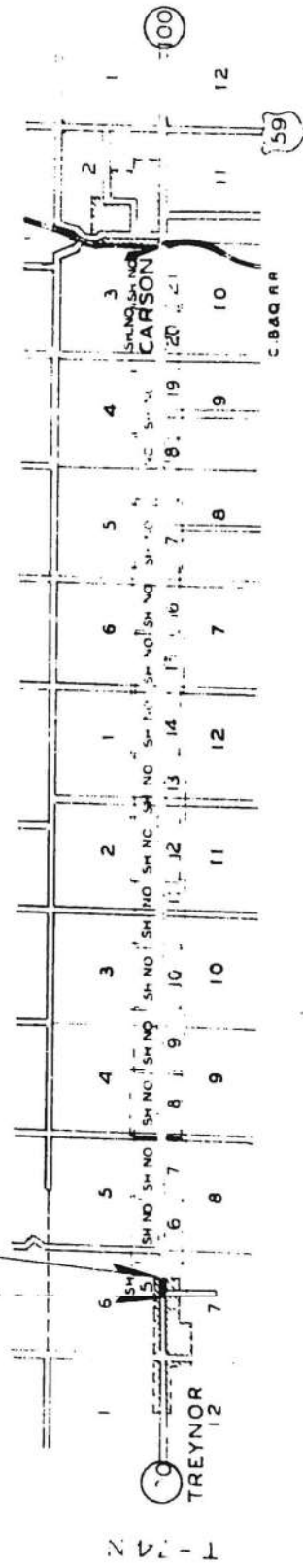
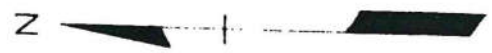
Resolution adopted by the Commission on

March 20, 1956 (Date)

STA. 615 + 30.0
BEG OF DIV. 1 & PROJ
(A.C. PAVING)

STA. 623 + 44.0
END OF DIV. 1
BEG OF DIV. 2

STA. 1109 + 94.3
END OF DIV. 2 & PROJ
(A.C. PAVING)



R-41W

R-40W

LAYOUT
SCALE: 1 INCH = 1 MILE



COMMISSION

RESOLUTION

BE IT RESOLVED by the Iowa State Highway Commission:

That the Commission finds, determines, and declares that for the immediate preservation of the public peace, health, and safety, and for the promotion of the general welfare, the rights of direct access to, from, and across Primary Highway Number 59 & 362 as set out on the attached map and identified as Project Number F-767(4) Mills - Pottawattamie County, and more specifically described as follows:

Beginning at Sta. 1400 + 59.5 (1700 + 45.5 = 1926 + 59.5)
to Sta. 2156 + 00.0 and from Sta. 748 + 67.9 (790 +
70.4 = 2559 + 32.2) To Sta. 2570 + 76.4.

shall be controlled under the authority and provisions of Chapter 148, Acts of the 56th General Assembly. The Chief Engineer is hereby authorized and directed to acquire, by the exercise of eminent domain or otherwise, the necessary right of way to carry out the purposes expressed in Chapter 148 and in this resolution, and also to acquire the right of ingress and egress to control the access to said highway.

Resolution adopted by the Commission on

April 4, 1956 (Date)

STA 2156 + 00.0
END DIV. 2
STOP CONSTRUCTION

EQUAT. STA. 1700 + 45.5
= STA. 1926 + 79.5

STA. 1451 + 96.0
END DIV. 1 &
BEG. DIV. 2

STA. 1400 + 59.5
BEG. DIV. 1 &
PROJECT

STA. 741 + 87.8
BEG. DIV. 4 (NON-PART.)
RESUME CONSTRUCTION

STA. 748 + 67.9
END DIV. 4 (NON-PART.)
BEG. OF DIV. 3 (PART.)

EQUAT. STA. 790 + 70.4 =
STA. 2559 + 32.3

STA. 2570 + 76.4
END DIV. 3 (PART.)
& PROJECT

N

T-75 N

T-74 N

T-73 N

(10)

(10)

CARSON

MACEDONIA

POTTAWATTAMIE CO.
MILLS CO.

HENDERSON

MILLS CO.
MONTGOMERY CO.

LAYOUT

RESOLUTION

BE IT RESOLVED by the Iowa State Highway Commission:

That the Commission finds, determines, and declares that for the immediate preservation of the public peace, health, and safety, and for the promotion of the general welfare, the rights of direct access to, from, and across Primary Highway Number Ia:100 as set out on the attached map and identified as Project Number F-773(3)

Pottawattamie County, and more specifically described as follows:

Beginning at Sta. 0 + 78.1 and ending at Sta. 560 + 72.0

shall be controlled under the authority and provisions of Chapter 148, Acts of the 56th General Assembly. The Chief Engineer is hereby authorized and directed to acquire, by the exercise of eminent domain or otherwise, the necessary right of way to carry out the purposes expressed in Chapter 148 and in this resolution, and also to acquire the right of ingress and egress to control the access to said highway.

Resolution adopted by the Commission on

March 20, 1956 (Date)

30

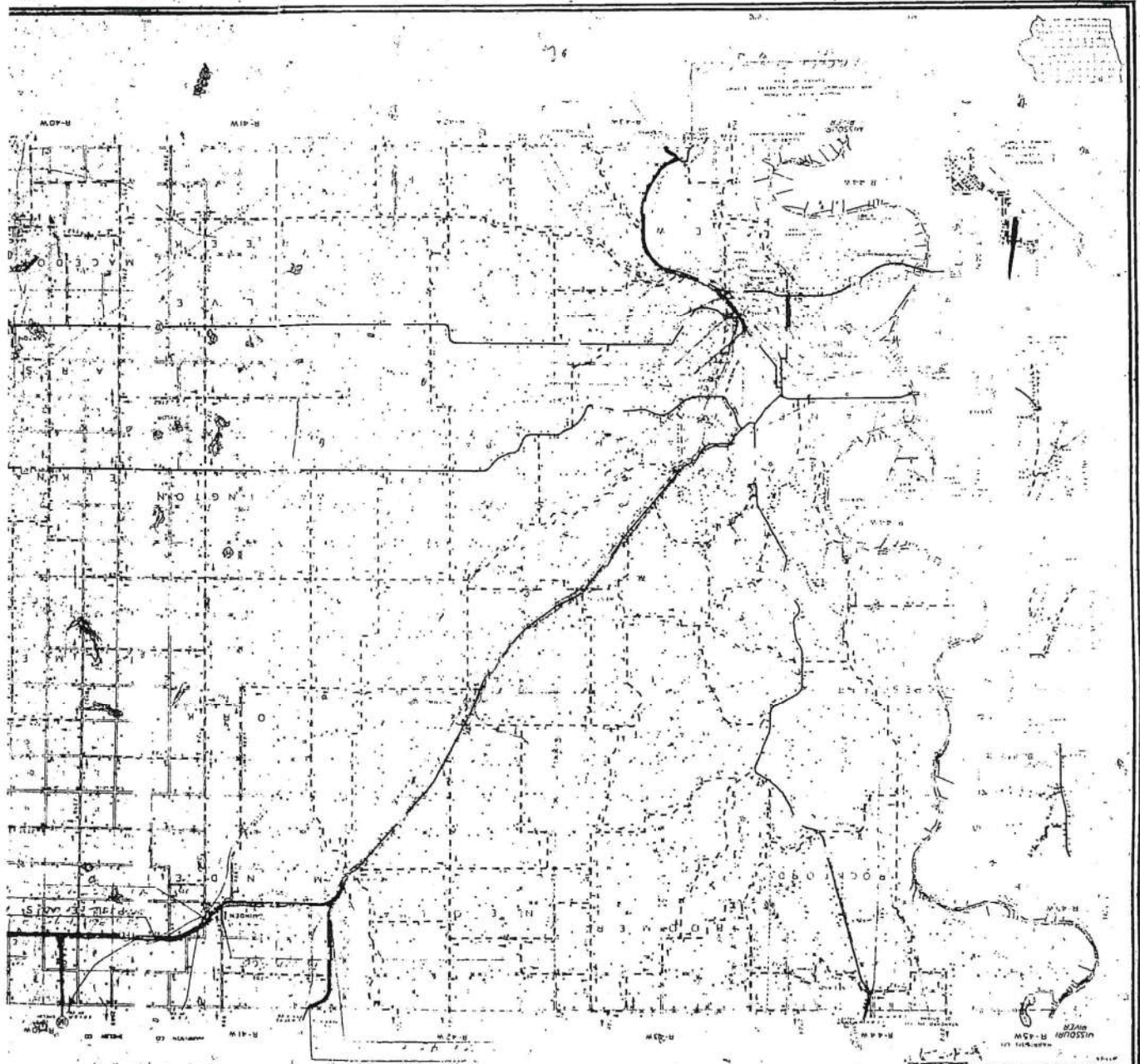
140

150

14

150

0



OFFICIAL FARM TO MARKET ROAD MAP OF
POTTAWATTAMIE COUNTY
 IOWA
 PREPARED BY THE
 IOWA STATE HIGHWAY COMMISSION
 U.S. DEPARTMENT OF COMMERCE
 BUREAU OF PUBLIC ROADS
 HIGHWAY PLANNING SURVEY
 1951

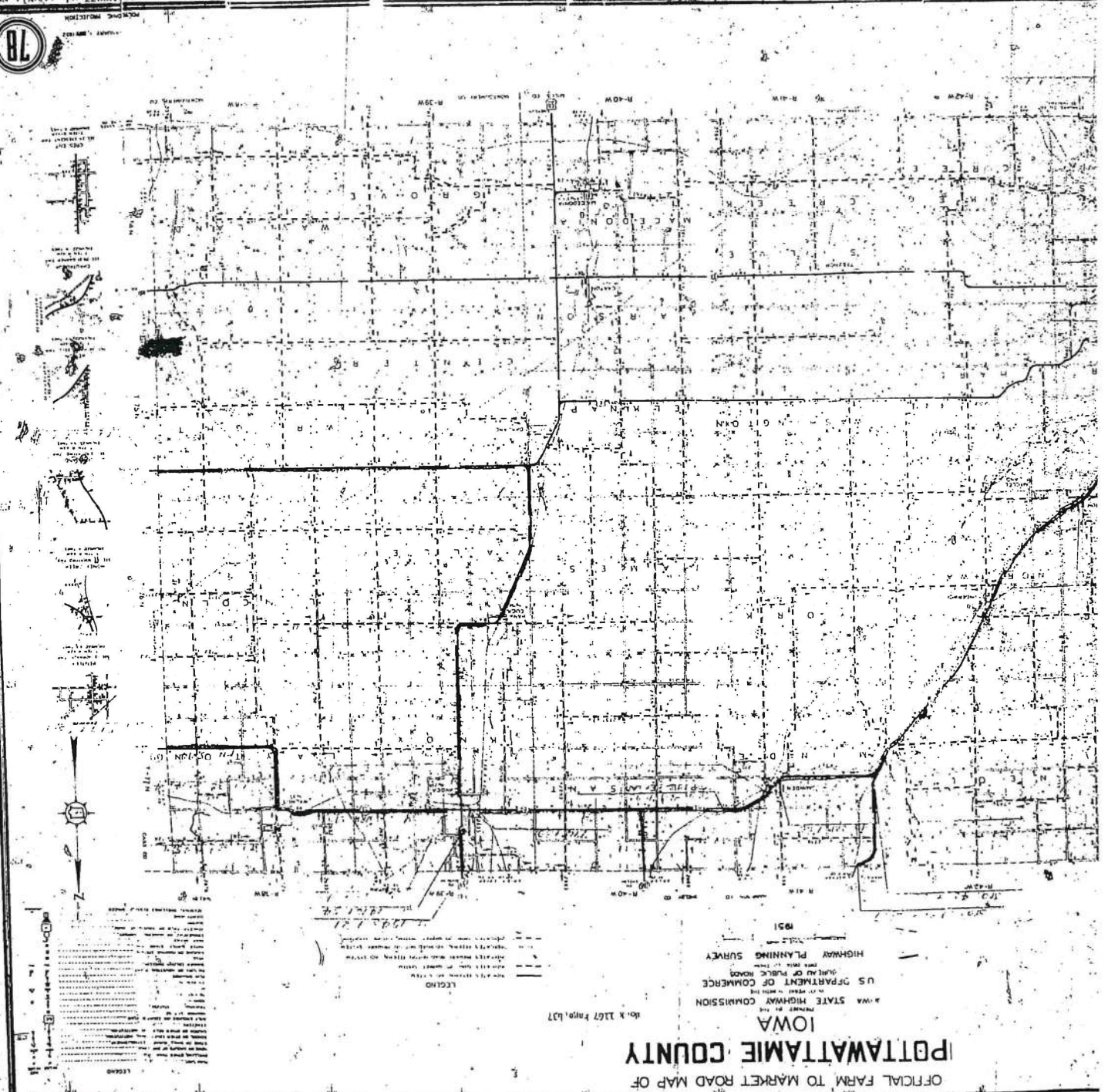
| | | | | | | | | | | | | | | | | | | | | | | | | | | | | | | | | | | | | | | | | | | | | | | | | | | | | | | | | | | | | | | | | | | | | | | | | | | | | | | | | | | | | | | | | | | | | | | | | | | | |
|---|---|---|---|---|---|---|---|---|----|----|----|----|----|----|----|----|----|----|----|----|----|----|----|----|----|----|----|----|----|----|----|----|----|----|----|----|----|----|----|----|----|----|----|----|----|----|----|----|----|----|----|----|----|----|----|----|----|----|----|----|----|----|----|----|----|----|----|----|----|----|----|----|----|----|----|----|----|----|----|----|----|----|----|----|----|----|----|----|----|----|----|----|----|----|----|----|----|----|-----|
| 1 | 2 | 3 | 4 | 5 | 6 | 7 | 8 | 9 | 10 | 11 | 12 | 13 | 14 | 15 | 16 | 17 | 18 | 19 | 20 | 21 | 22 | 23 | 24 | 25 | 26 | 27 | 28 | 29 | 30 | 31 | 32 | 33 | 34 | 35 | 36 | 37 | 38 | 39 | 40 | 41 | 42 | 43 | 44 | 45 | 46 | 47 | 48 | 49 | 50 | 51 | 52 | 53 | 54 | 55 | 56 | 57 | 58 | 59 | 60 | 61 | 62 | 63 | 64 | 65 | 66 | 67 | 68 | 69 | 70 | 71 | 72 | 73 | 74 | 75 | 76 | 77 | 78 | 79 | 80 | 81 | 82 | 83 | 84 | 85 | 86 | 87 | 88 | 89 | 90 | 91 | 92 | 93 | 94 | 95 | 96 | 97 | 98 | 99 | 100 |
|---|---|---|---|---|---|---|---|---|----|----|----|----|----|----|----|----|----|----|----|----|----|----|----|----|----|----|----|----|----|----|----|----|----|----|----|----|----|----|----|----|----|----|----|----|----|----|----|----|----|----|----|----|----|----|----|----|----|----|----|----|----|----|----|----|----|----|----|----|----|----|----|----|----|----|----|----|----|----|----|----|----|----|----|----|----|----|----|----|----|----|----|----|----|----|----|----|----|----|-----|

Book 1167 Page 136

OFFICIAL FARM TO MARKET ROAD MAP OF
POTTAWATTAMIE COUNTY

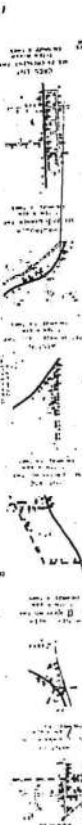
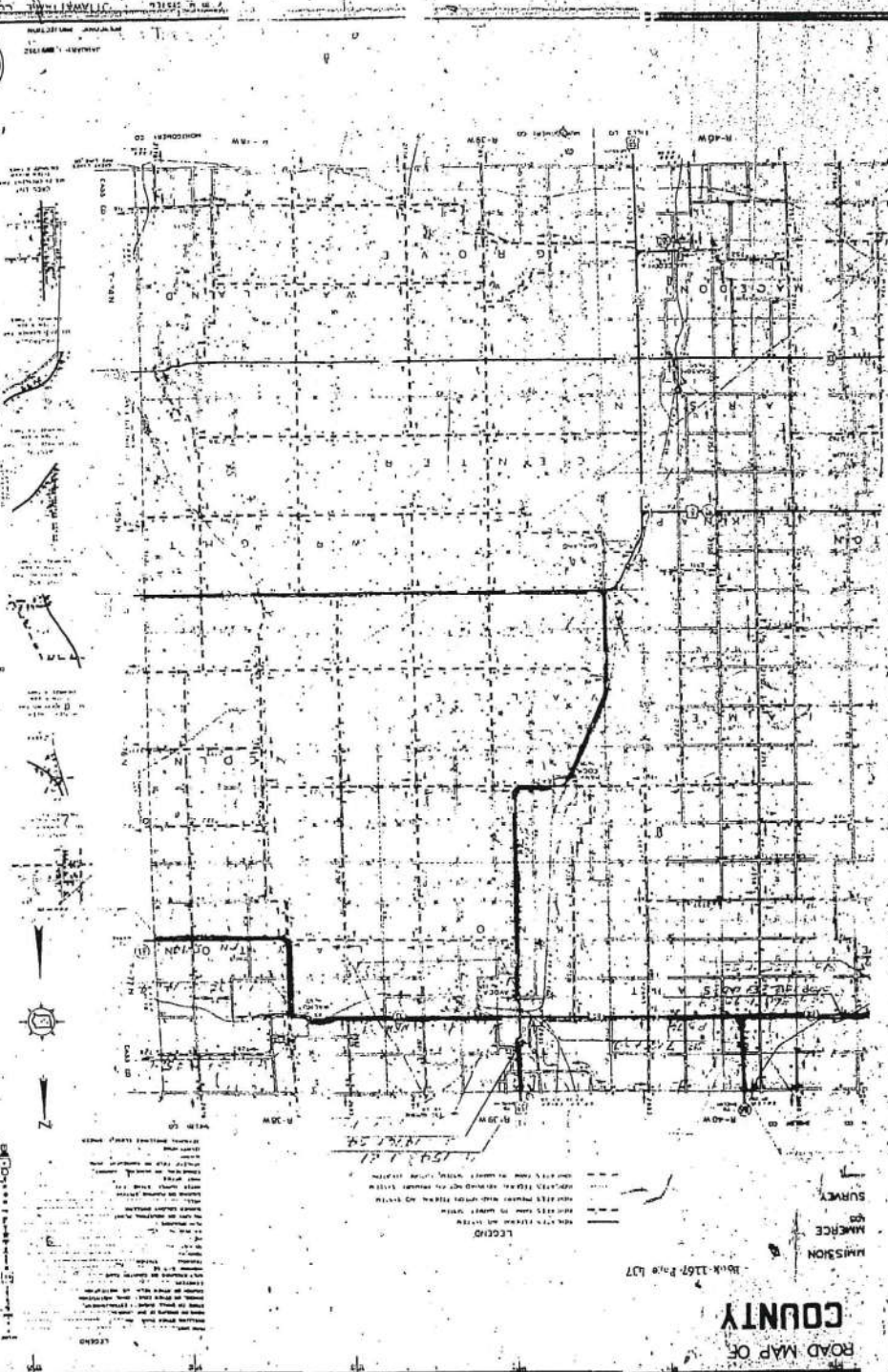
STATE OF IOWA
IOWA STATE HIGHWAY COMMISSION
U.S. DEPARTMENT OF COMMERCE
BUREAU OF PUBLIC ROADS
HIGHWAY PLANNING SURVEY
1951

Scale 1:62,500 (1" = 1/2 mile)



LEGEND

| | |
|----------|---------------------|
| [Symbol] | State Highway |
| [Symbol] | County Highway |
| [Symbol] | Farm-to-Market Road |
| [Symbol] | Other Road |
| [Symbol] | Water |
| [Symbol] | Settlement |
| [Symbol] | Section Line |
| [Symbol] | Township Line |
| [Symbol] | Range Line |
| [Symbol] | Section Corner |
| [Symbol] | Water Tower |
| [Symbol] | Well |
| [Symbol] | Power Line |
| [Symbol] | Telephone Line |
| [Symbol] | Gas Line |
| [Symbol] | Electric Line |
| [Symbol] | Other Utility Line |
| [Symbol] | Other |



LEGEND

ROADS
PROPERTY BOUNDARIES
...

LEGEND

...

ROAD MAP OF
MISSOURI
COUNTY

PLAT NO. 1167 Page 107

RESOLUTION

Continued

BE IT RESOLVED by the Iowa State Highway Commission:
That the Commission finds, determines, and declares that
for the immediate preservation of the public peace, health,
and safety, and for the promotion of the general welfare, the
rights of direct access to, from, and across, all the Primary
Roads in Pottawattamie County, as set out on
the attached map of said county and more specifically
described in the attached listing, shall be controlled under
the authority and provisions of Chapter 148, Acts of the
56th General Assembly. The Chief Engineer is hereby
authorized and directed to acquire, by the exercise of
eminent domain or otherwise, the necessary right of way to
carry out the purposes expressed in Chapter 148 and in this
resolution, and also to acquire the right of ingress and egress
to control the access to said highway.

Adopted by
Iowa State Highway Commission

May 12, 1956 (Date)