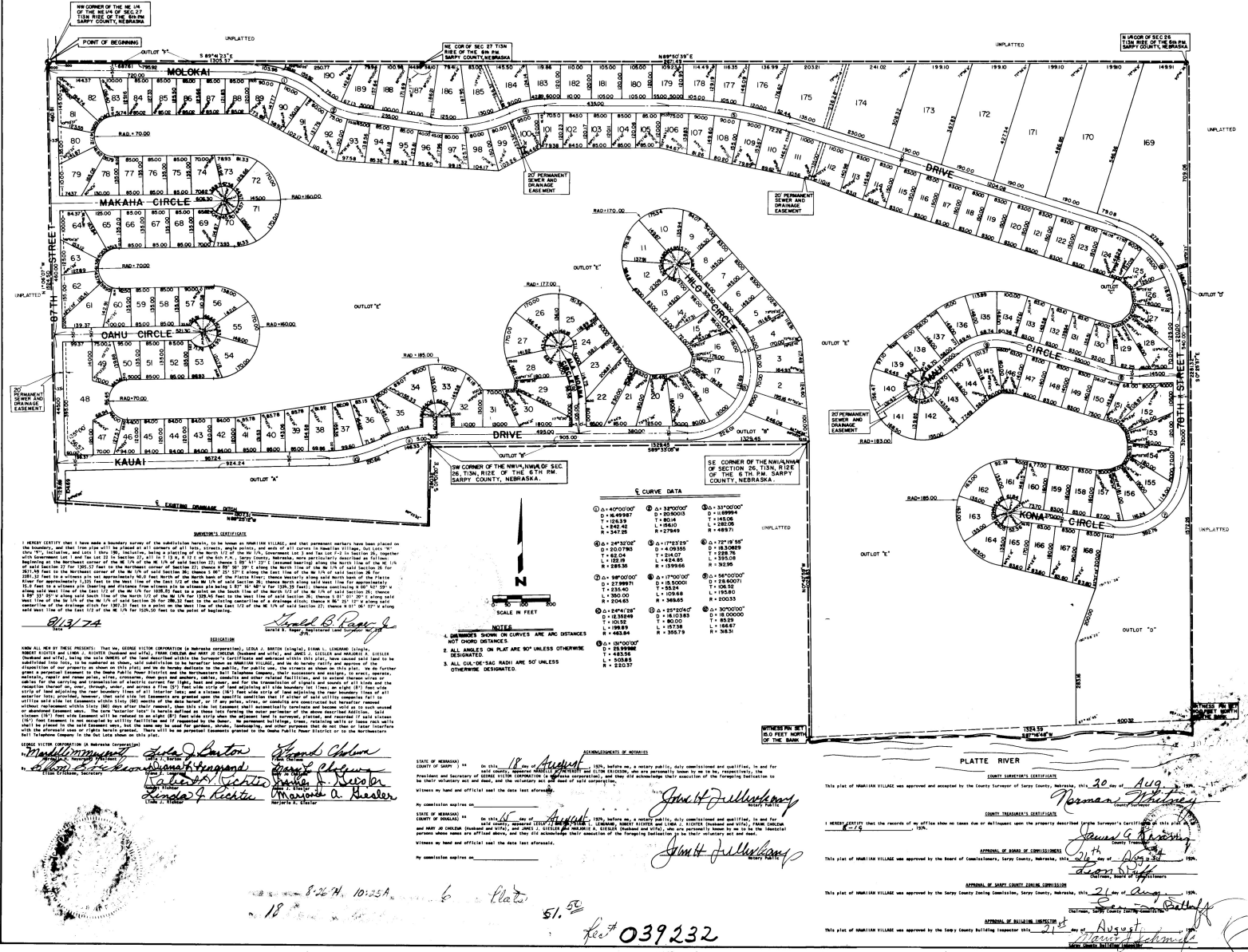


HAWAIIAN VILLAGE

OUTLOTS "A" THRU "F" INCLUSIVE, AND LOTS 1 THRU 190 INCLUSIVE
BEING A PLATTING OF THE NORTH 1/2 OF THE NW 1/4 OF SECTION 26, T13N, R12E OF THE 6TH PM., SARPY COUNTY, NEBRASKA,
AND TAX LOT F2 IN SECTION 26, AND GOVERNMENT LOT 1 AND TAX LOT 22 IN SECTION
27, ALL IN T13N, R12E OF THE 6TH PM., SARPY COUNTY, NEBRASKA.



8-26-39 10:25A
18
Platte
51.50
feet 039232

STATE OF NEBRASKA
COUNTY OF SARPY
I, Clerk of said County, do hereby certify that the foregoing is a true and correct copy of the original as filed in my office on this 20th day of August, 1939.