

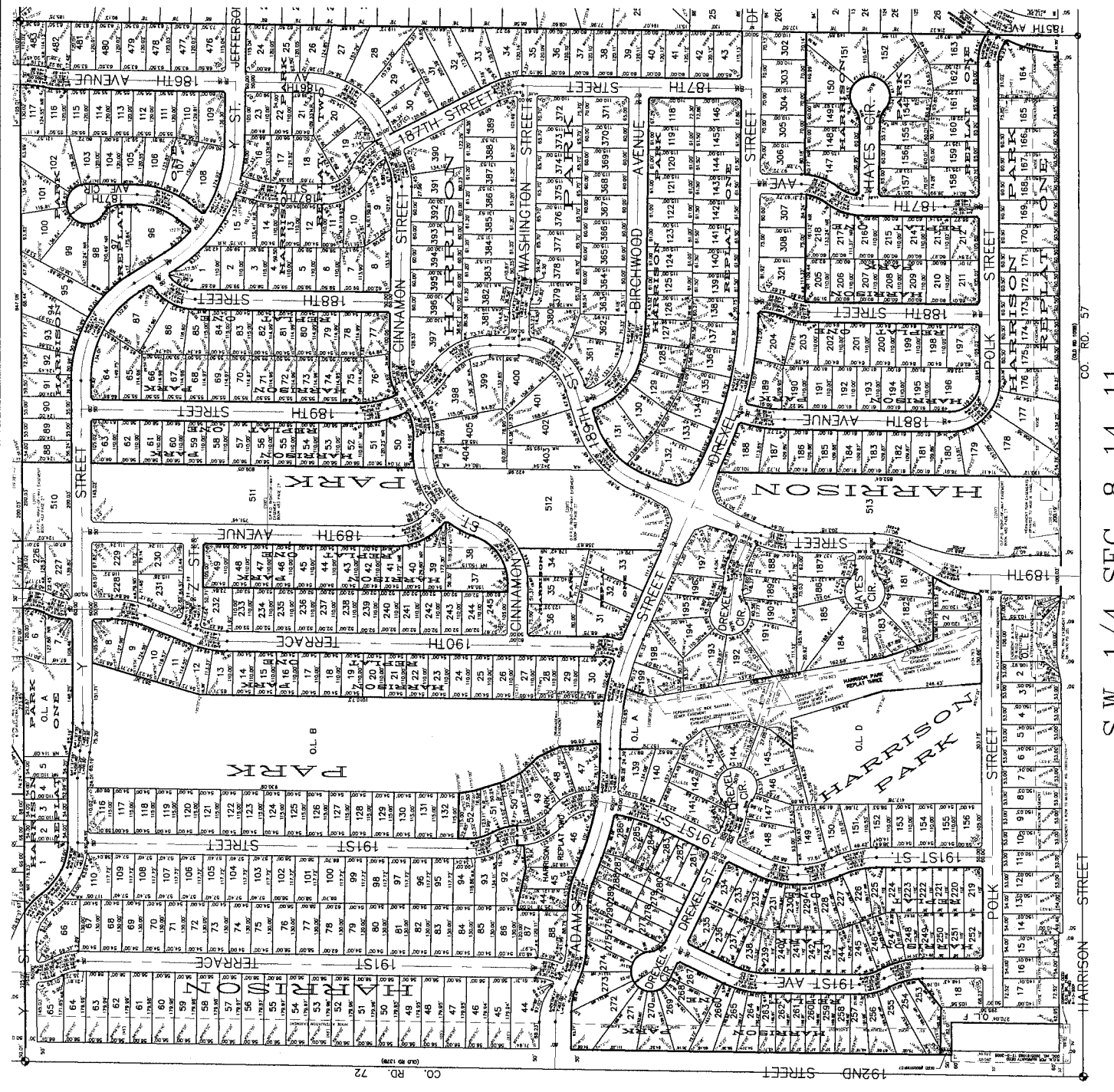


DOUGLAS COUNTY ENGINEER

OMAHA NE. 68116

156TH & W. MAPLE RD.

SCALE: 1" = 100'
DATE: 11-1-2007
DRAWN BY: C.M. BENTON
CHECKED BY: C.M. BENTON
APPROVED BY: C.M. BENTON
PROJECT: HARRISON PARK RE-PLAT THREE
REVISIONS: SEE SHEET 156TH & W. MAPLE RD. BEFORE BEING USED



CO. RD. 57

S.W. 1/4 SEC. 8-14-11

HARRISON STREET

192ND STREET

CO. RD. 72