





# HARRISON WOODS

LOTS 167 THROUGH 309, AND OUTLOTS D AND E

PLATTING OF PART OF THE NE 1/4 OF SECTION 16, T14N, R11E OF THE 6th P.M., SARPY COUNTY, NEBRASKA

Filed for Record July 26, 2003 at 2:19:00 PM  
 Instrument # 2003-70198  
 Lloyd L. Dowling Registrar of Deeds Sarpy Co., NE

REVIEW BY THE SARPY COUNTY SURVEYOR

THIS PLAT OF HARRISON WOODS WAS REVIEWED BY THE SARPY COUNTY SURVEYOR'S OFFICE  
 THIS 22nd DAY OF November, 2003.

DAY OF November, 2003  
 BEHALF OF SAID HARRISON WOODS, L.L.C.

*[Signature]*

DAY OF November, 2003  
 ON BEHALF OF SAID FIRST NATIONAL

*[Signature]*

BOARD OF COMMISSIONERS

*[Signature]*  
 COUNTY BOARD OF COMMISSIONERS

COUNTY PLANNING COMMISSION

*[Signature]*  
 COUNTY PLANNING COMMISSION

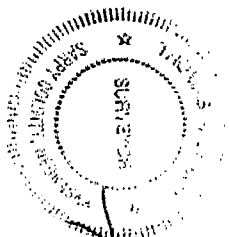
COUNTY BUILDING INSPECTOR

*[Signature]*  
 BUILDING INSPECTOR

OR DELINQUENT AGAINST THE  
 IN THIS PLAT AS SHOWN BY THE

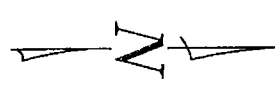
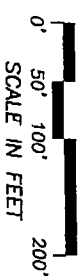
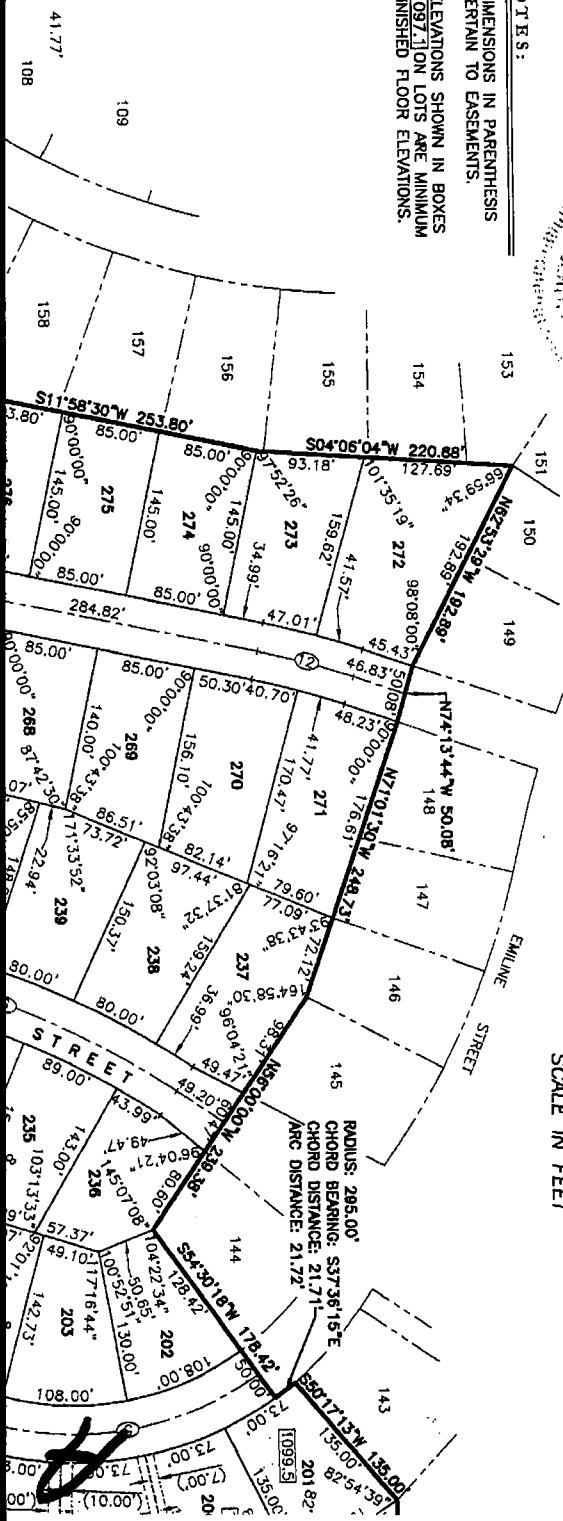
NOTES:

- DIMENSIONS IN PARENTHESIS PERTAIN TO EASEMENTS.
- ELEVATIONS SHOWN IN BOXES [ ] ON LOTS ARE MINIMUM FINISHED FLOOR ELEVATIONS.



SARPY COUNTY SURVEYOR

*[Signature]*



CURVE	CENTRE DELTA
1	40°42'09"
2	20°00'00"
3	64°00'00"
4	12°00'00"
5	52°29'42"
6	27°00'00"
7	62°00'00"
8	20°00'00"
9	49°17'51"
10	49°17'51"
11	37°01'30"
12	7°00'00"
13	40°45'30"
14	49°17'51"
15	354°19" PROPE

THENCE N82°53'29"  
 THENCE S04°08'04"  
 THENCE S11°58'30"  
 THENCE S34°22'08"  
 THENCE S48°34'52"  
 THENCE S48°40'48"  
 THENCE S49°00'00"  
 THENCE N41°00'00"  
 THENCE N38°51'37"  
 THENCE N41°00'00"  
 THENCE S49°00'00"  
 THENCE S41°13'04"  
 THENCE S33°40'18"  
 THENCE N58°13'02"  
 THENCE SOUTHWEST  
 BEARING S28°48'4"  
 THENCE N83°07'34"  
 THENCE N00°17'51"  
 BEGINNING.

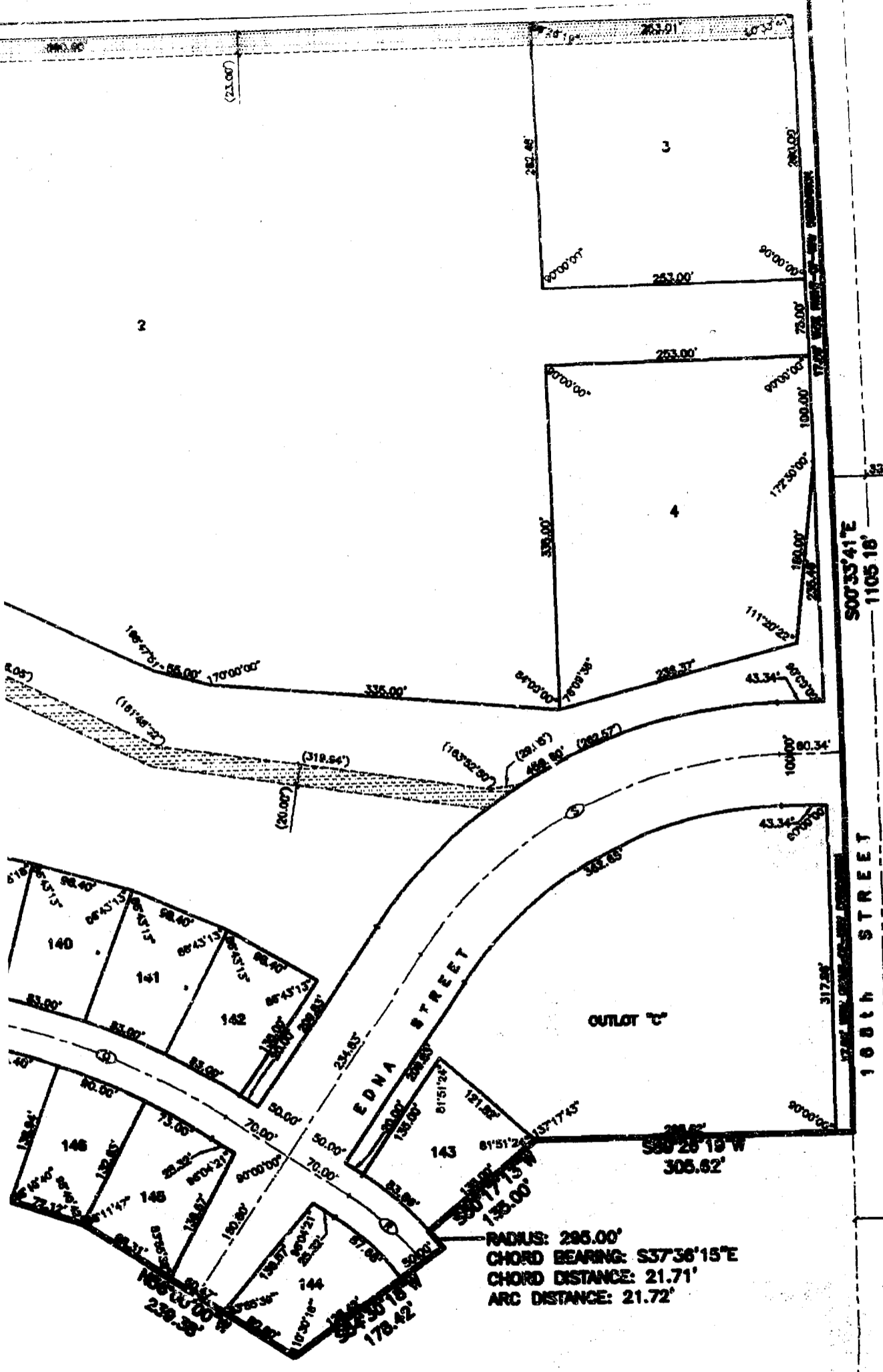
JUNE 26, 2001  
 DATE:

**DEDICATION**  
 KNOW ALL MEN E  
 R. SCHMITT, MURI  
 SANITARY AND IMI  
 AND FIRST NATION  
 THE SURVEYOR'S  
 SUBDIVIDED INTO  
 SAID SUBMISSION  
 APPROVE OF THE  
 DEDICATE TO THE  
 FURTHER GRANT  
 CORPORATION, AN  
 TELEVISION SYSTEM  
 OPERATE, MAINTAIN  
 CABLES, CONDUIT  
 THE CARRYING AND  
 TRANSMISSION OF  
 SIGNALS PROVIDE  
 UNDER AND ACROSS  
 BOUNDARY LOT L  
 WHERE NO EASEL  
 THE REAR LOT L  
 ROCK WALLS SHAL  
 GARDENS, SHRUBS  
 OR LATER INTERF

HARRIS  
 BY: *Michael I*  
 MICHAEL I

BY: *[Signature]*

BY: *[Signature]*



RADIUS: 295.00'  
 CHORD BEARING: S37°36'15"E  
 CHORD DISTANCE: 21.71'  
 ARC DISTANCE: 21.72'

L. OF SARPY COUNTY PLANNING COMMISSION  
 OF HARRISON WOODS WAS APPROVED BY THE SARPY COUNTY PLANNING COMMISSION  
 DAY OF July, 2001.

*Donald E. Meyer*  
 CHAIRMAN, SARPY COUNTY PLANNING COMMISSION

L. OF SARPY COUNTY BUILDING INSPECTOR  
 OF HARRISON WOODS WAS APPROVED BY THE SARPY COUNTY BUILDING INSPECTOR

ACKNOWLEDG  
 STATE OF NEBRASKA  
 COUNTY OF *Do.*  
 THE FOREGOING  
 BY MICHAEL L. I  
 WOODS, L.L.C.

JUNE 26, 2001

DATE

DAVID H. NEFF  
NEBRASKA R.L.S. 475

DEDICATION

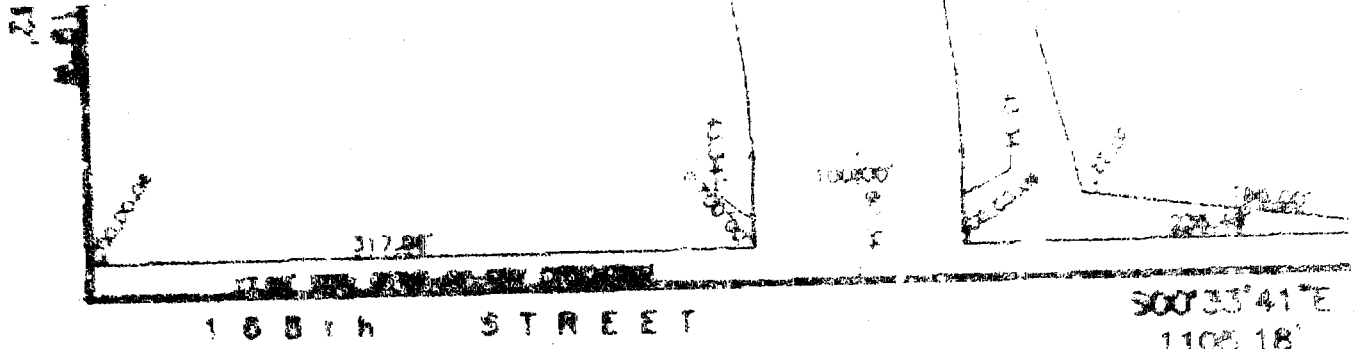
KNOW ALL MEN BY THESE PRESENTS: THAT WE, HARRISON WOODS, L.L.C. AND MARK PALMER, TERESA R. SCHMITT, MURRAY MCARDLE, MICHAEL L. RIEDMANN AND GERALD L. TORCZON, TRUSTEES OF SANITARY AND IMPROVEMENT DISTRICT NO. 220 OF SARPY COUNTY, NEBRASKA BEING THE OWNERS AND FIRST NATIONAL BANK OF OMAHA, BEING THE MORTGAGE HOLDER OF THE LAND DESCRIBED WITHIN THE SURVEYOR'S CERTIFICATE AND EMBRACED WITHIN THIS PLAT, HAVE CAUSED SAID LAND TO BE SUBDIVIDED INTO STREETS, LOTS AND OUTLOTS TO BE NAMED, NUMBERED AND LETTERED AS SHOWN, SAID SUBDIVISION TO BE HEREAFTER KNOWN AS HARRISON WOODS, AND WE DO HEREBY RAIFY AND APPROVE OF THE DISPOSITION OF OUR PROPERTY AS SHOWN ON THIS PLAT AND WE HEREBY DEDICATE TO THE PUBLIC FOR PUBLIC USE THE STREETS AS SHOWN ON THIS PLAT, AND WE DO FURTHER GRANT A PERPETUAL EASEMENT TO THE OMAHA PUBLIC POWER DISTRICT, ONEST CORPORATION, AND ANY COMPANY WHICH HAS BEEN GRANTED A FRANCHISE TO PROVIDE A CABLE TELEVISION SYSTEM IN THE AREA TO BE SUBDIVIDED, THEIR SUCCESSORS AND ASSIGNS, TO ERECT, OPERATE, MAINTAIN, REPAIR, AND RENEW POLES, WIRES, CROSSARMS, DOWN GUYS AND ANCHORS, CABLES, CONDUITS AND OTHER RELATED FACILITIES AND TO EXTEND THEREON WIRES OR CABLES FOR THE CARRYING AND TRANSMISSION OF ELECTRIC CURRENT FOR LIGHT, HEAT, AND POWER FOR THE TRANSMISSION OF SIGNALS AND SOUNDS OF ALL KINDS AND THE RECEPTION THEREOF, INCLUDING SIGNALS PROVIDED BY A CABLE TELEVISION SYSTEM AND THEIR RECEPTION, ON, OVER, THROUGH, UNDER AND ACROSS A FIVE (5) FOOT WIDE STRIP OF LAND ABUTTING ALL FRONT AND SIDE BOUNDARY LOT LINES EXCEPT THOSE SIDE LOT LINES BETWEEN THE LIKE NUMBERED A AND B LOTS WHERE NO EASEMENTS SHALL BE GRANTED; AND AN EIGHT (8) FOOT WIDE STRIP OF LAND ABUTTING THE REAR LOT LINES OF ALL LOTS; NO PERMANENT BUILDINGS, TREES, RETAINING WALLS OR LOOSE ROCK WALLS SHALL BE PLACED IN SAID EASEMENT WAYS, BUT THE SAME MAY BE USED FOR GARDENS, SHRUBS, LANDSCAPING, SIDEWALKS, DRIVEWAYS, AND OTHER PURPOSES THAT DO NOT THEN OR LATER INTERFERE WITH THE AFORESAID USES OR RIGHTS HEREIN GRANTED.

HARRISON WOODS, L.L.C.

BY: *Michael L. Riedmann*  
MICHAEL L. RIEDMANN, MANAGER

FIRST NATIONAL BANK OF OMAHA

BY: *Robert J. Horak*  
ROBERT J. HORAK, VICE PRESIDENT



TRUSTEES OF SANITARY AND IMPROVEMENT DISTRICT NO. 220 OF  
SARPY COUNTY, NEBRASKA

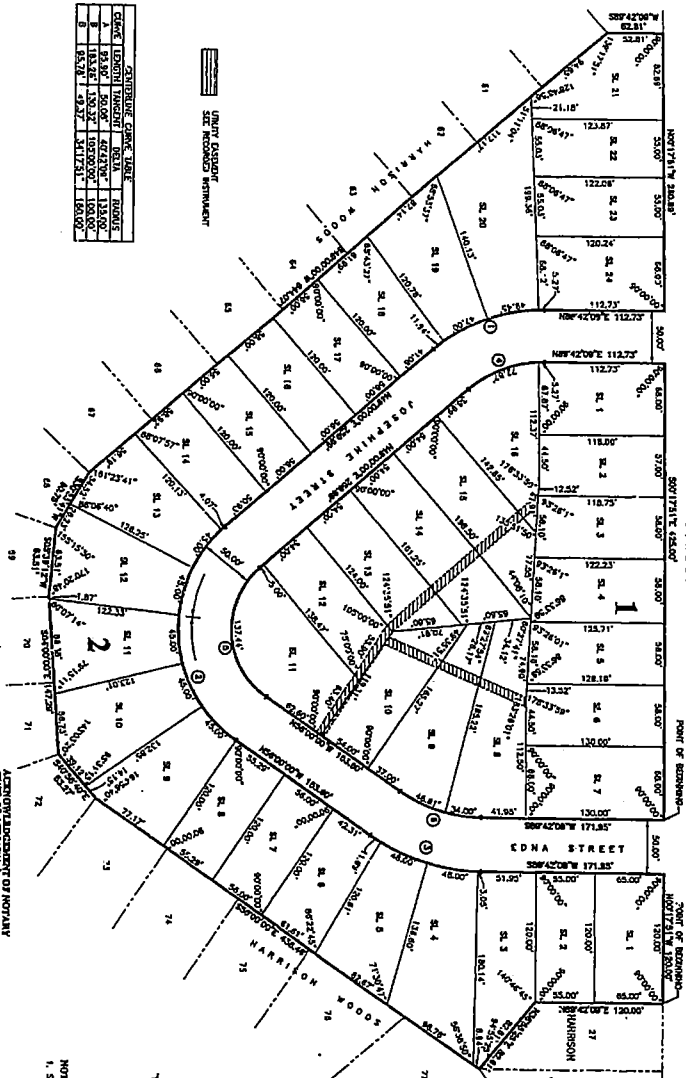
**W. H. HARRIS, INC.**  
Surveyors

**HARRIS**

APR 31 11:13 AM  
2002  
RECORDS & PERMITS  
SHERIFF'S OFFICE

# HARRISON WOODS REPLAT 2

SECTION 1, T181N16E, R10E, S12W, INCORPORATED LOT 1 AND SECTIONS 1, 2, 3, 4, 5, 6, 7, 8, 9, 10, 11, 12, 13, 14, 15, 16, 17, 18, 19, 20, 21, 22, 23, 24, 25, 26, 27, 28, 29, 30, 31, 32, 33, 34, 35, 36, 37, 38, 39, 40, 41, 42, 43, 44, 45, 46, 47, 48, 49, 50, 51, 52, 53, 54, 55, 56, 57, 58, 59, 60, 61, 62, 63, 64, 65, 66, 67, 68, 69, 70, 71, 72, 73, 74, 75, 76, 77, 78, 79, 80, 81, 82, 83, 84, 85, 86, 87, 88, 89, 90, 91, 92, 93, 94, 95, 96, 97, 98, 99, 100, 101, 102, 103, 104, 105, 106, 107, 108, 109, 110, 111, 112, 113, 114, 115, 116, 117, 118, 119, 120, 121, 122, 123, 124, 125, 126, 127, 128, 129, 130, 131, 132, 133, 134, 135, 136, 137, 138, 139, 140, 141, 142, 143, 144, 145, 146, 147, 148, 149, 150, 151, 152, 153, 154, 155, 156, 157, 158, 159, 160, 161, 162, 163, 164, 165, 166, 167, 168, 169, 170, 171, 172, 173, 174, 175, 176, 177, 178, 179, 180, 181, 182, 183, 184, 185, 186, 187, 188, 189, 190, 191, 192, 193, 194, 195, 196, 197, 198, 199, 200, 201, 202, 203, 204, 205, 206, 207, 208, 209, 210, 211, 212, 213, 214, 215, 216, 217, 218, 219, 220, 221, 222, 223, 224, 225, 226, 227, 228, 229, 230, 231, 232, 233, 234, 235, 236, 237, 238, 239, 240, 241, 242, 243, 244, 245, 246, 247, 248, 249, 250, 251, 252, 253, 254, 255, 256, 257, 258, 259, 260, 261, 262, 263, 264, 265, 266, 267, 268, 269, 270, 271, 272, 273, 274, 275, 276, 277, 278, 279, 280, 281, 282, 283, 284, 285, 286, 287, 288, 289, 290, 291, 292, 293, 294, 295, 296, 297, 298, 299, 300, 301, 302, 303, 304, 305, 306, 307, 308, 309, 310, 311, 312, 313, 314, 315, 316, 317, 318, 319, 320, 321, 322, 323, 324, 325, 326, 327, 328, 329, 330, 331, 332, 333, 334, 335, 336, 337, 338, 339, 340, 341, 342, 343, 344, 345, 346, 347, 348, 349, 350, 351, 352, 353, 354, 355, 356, 357, 358, 359, 360, 361, 362, 363, 364, 365, 366, 367, 368, 369, 370, 371, 372, 373, 374, 375, 376, 377, 378, 379, 380, 381, 382, 383, 384, 385, 386, 387, 388, 389, 390, 391, 392, 393, 394, 395, 396, 397, 398, 399, 400, 401, 402, 403, 404, 405, 406, 407, 408, 409, 410, 411, 412, 413, 414, 415, 416, 417, 418, 419, 420, 421, 422, 423, 424, 425, 426, 427, 428, 429, 430, 431, 432, 433, 434, 435, 436, 437, 438, 439, 440, 441, 442, 443, 444, 445, 446, 447, 448, 449, 450, 451, 452, 453, 454, 455, 456, 457, 458, 459, 460, 461, 462, 463, 464, 465, 466, 467, 468, 469, 470, 471, 472, 473, 474, 475, 476, 477, 478, 479, 480, 481, 482, 483, 484, 485, 486, 487, 488, 489, 490, 491, 492, 493, 494, 495, 496, 497, 498, 499, 500, 501, 502, 503, 504, 505, 506, 507, 508, 509, 510, 511, 512, 513, 514, 515, 516, 517, 518, 519, 520, 521, 522, 523, 524, 525, 526, 527, 528, 529, 530, 531, 532, 533, 534, 535, 536, 537, 538, 539, 540, 541, 542, 543, 544, 545, 546, 547, 548, 549, 550, 551, 552, 553, 554, 555, 556, 557, 558, 559, 560, 561, 562, 563, 564, 565, 566, 567, 568, 569, 570, 571, 572, 573, 574, 575, 576, 577, 578, 579, 580, 581, 582, 583, 584, 585, 586, 587, 588, 589, 590, 591, 592, 593, 594, 595, 596, 597, 598, 599, 600, 601, 602, 603, 604, 605, 606, 607, 608, 609, 610, 611, 612, 613, 614, 615, 616, 617, 618, 619, 620, 621, 622, 623, 624, 625, 626, 627, 628, 629, 630, 631, 632, 633, 634, 635, 636, 637, 638, 639, 640, 641, 642, 643, 644, 645, 646, 647, 648, 649, 650, 651, 652, 653, 654, 655, 656, 657, 658, 659, 660, 661, 662, 663, 664, 665, 666, 667, 668, 669, 670, 671, 672, 673, 674, 675, 676, 677, 678, 679, 680, 681, 682, 683, 684, 685, 686, 687, 688, 689, 690, 691, 692, 693, 694, 695, 696, 697, 698, 699, 700, 701, 702, 703, 704, 705, 706, 707, 708, 709, 710, 711, 712, 713, 714, 715, 716, 717, 718, 719, 720, 721, 722, 723, 724, 725, 726, 727, 728, 729, 730, 731, 732, 733, 734, 735, 736, 737, 738, 739, 740, 741, 742, 743, 744, 745, 746, 747, 748, 749, 750, 751, 752, 753, 754, 755, 756, 757, 758, 759, 760, 761, 762, 763, 764, 765, 766, 767, 768, 769, 770, 771, 772, 773, 774, 775, 776, 777, 778, 779, 780, 781, 782, 783, 784, 785, 786, 787, 788, 789, 790, 791, 792, 793, 794, 795, 796, 797, 798, 799, 800, 801, 802, 803, 804, 805, 806, 807, 808, 809, 810, 811, 812, 813, 814, 815, 816, 817, 818, 819, 820, 821, 822, 823, 824, 825, 826, 827, 828, 829, 830, 831, 832, 833, 834, 835, 836, 837, 838, 839, 840, 841, 842, 843, 844, 845, 846, 847, 848, 849, 850, 851, 852, 853, 854, 855, 856, 857, 858, 859, 860, 861, 862, 863, 864, 865, 866, 867, 868, 869, 870, 871, 872, 873, 874, 875, 876, 877, 878, 879, 880, 881, 882, 883, 884, 885, 886, 887, 888, 889, 890, 891, 892, 893, 894, 895, 896, 897, 898, 899, 900, 901, 902, 903, 904, 905, 906, 907, 908, 909, 910, 911, 912, 913, 914, 915, 916, 917, 918, 919, 920, 921, 922, 923, 924, 925, 926, 927, 928, 929, 930, 931, 932, 933, 934, 935, 936, 937, 938, 939, 940, 941, 942, 943, 944, 945, 946, 947, 948, 949, 950, 951, 952, 953, 954, 955, 956, 957, 958, 959, 960, 961, 962, 963, 964, 965, 966, 967, 968, 969, 970, 971, 972, 973, 974, 975, 976, 977, 978, 979, 980, 981, 982, 983, 984, 985, 986, 987, 988, 989, 990, 991, 992, 993, 994, 995, 996, 997, 998, 999, 1000



SECTION	ACRES	FRONT	REAR	WIDTH	DEPTH
1	1.33	112.27	112.27	112.27	112.27
2	1.33	112.27	112.27	112.27	112.27
3	1.33	112.27	112.27	112.27	112.27
4	1.33	112.27	112.27	112.27	112.27
5	1.33	112.27	112.27	112.27	112.27
6	1.33	112.27	112.27	112.27	112.27
7	1.33	112.27	112.27	112.27	112.27
8	1.33	112.27	112.27	112.27	112.27
9	1.33	112.27	112.27	112.27	112.27
10	1.33	112.27	112.27	112.27	112.27
11	1.33	112.27	112.27	112.27	112.27
12	1.33	112.27	112.27	112.27	112.27
13	1.33	112.27	112.27	112.27	112.27
14	1.33	112.27	112.27	112.27	112.27
15	1.33	112.27	112.27	112.27	112.27
16	1.33	112.27	112.27	112.27	112.27
17	1.33	112.27	112.27	112.27	112.27
18	1.33	112.27	112.27	112.27	112.27
19	1.33	112.27	112.27	112.27	112.27
20	1.33	112.27	112.27	112.27	112.27
21	1.33	112.27	112.27	112.27	112.27
22	1.33	112.27	112.27	112.27	112.27
23	1.33	112.27	112.27	112.27	112.27
24	1.33	112.27	112.27	112.27	112.27
25	1.33	112.27	112.27	112.27	112.27
26	1.33	112.27	112.27	112.27	112.27
27	1.33	112.27	112.27	112.27	112.27
28	1.33	112.27	112.27	112.27	112.27
29	1.33	112.27	112.27	112.27	112.27
30	1.33	112.27	112.27	112.27	112.27
31	1.33	112.27	112.27	112.27	112.27
32	1.33	112.27	112.27	112.27	112.27
33	1.33	112.27	112.27	112.27	112.27
34	1.33	112.27	112.27	112.27	112.27
35	1.33	112.27	112.27	112.27	112.27
36	1.33	112.27	112.27	112.27	112.27
37	1.33	112.27	112.27	112.27	112.27
38	1.33	112.27	112.27	112.27	112.27
39	1.33	112.27	112.27	112.27	112.27
40	1.33	112.27	112.27	112.27	112.27
41	1.33	112.27	112.27	112.27	112.27
42	1.33	112.27	112.27	112.27	112.27
43	1.33	112.27	112.27	112.27	112.27
44	1.33	112.27	112.27	112.27	112.27
45	1.33	112.27	112.27	112.27	112.27
46	1.33	112.27	112.27	112.27	112.27
47	1.33	112.27	112.27	112.27	112.27
48	1.33	112.27	112.27	112.27	112.27
49	1.33	112.27	112.27	112.27	112.27
50	1.33	112.27	112.27	112.27	112.27
51	1.33	112.27	112.27	112.27	112.27
52	1.33	112.27	112.27	112.27	112.27
53	1.33	112.27	112.27	112.27	112.27
54	1.33	112.27	112.27	112.27	112.27
55	1.33	112.27	112.27	112.27	112.27
56	1.33	112.27	112.27	112.27	112.27
57	1.33	112.27	112.27	112.27	112.27
58	1.33	112.27	112.27	112.27	112.27
59	1.33	112.27	112.27	112.27	112.27
60	1.33	112.27	112.27	112.27	112.27
61	1.33	112.27	112.27	112.27	112.27
62	1.33	112.27	112.27	112.27	112.27
63	1.33	112.27	112.27	112.27	112.27
64	1.33	112.27	112.27	112.27	112.27
65	1.33	112.27	112.27	112.27	112.27
66	1.33	112.27	112.27	112.27	112.27
67	1.33	112.27	112.27	112.27	112.27
68	1.33	112.27	112.27	112.27	112.27
69	1.33	112.27	112.27	112.27	112.27
70	1.33	112.27	112.27	112.27	112.27
71	1.33	112.27	112.27	112.27	112.27
72	1.33	112.27	112.27	112.27	112.27
73	1.33	112.27	112.27	112.27	112.27
74	1.33	112.27	112.27	112.27	112.27
75	1.33	112.27	112.27	112.27	112.27
76	1.33	112.27	112.27	112.27	112.27
77	1.33	112.27	112.27	112.27	112.27
78	1.33	112.27	112.27	112.27	112.27
79	1.33	112.27	112.27	112.27	112.27
80	1.33	112.27	112.27	112.27	112.27
81	1.33	112.27	112.27	112.27	112.27
82	1.33	112.27	112.27	112.27	112.27
83	1.33	112.27	112.27	112.27	112.27
84	1.33	112.27	112.27	112.27	112.27
85	1.33	112.27	112.27	112.27	112.27
86	1.33	112.27	112.27	112.27	112.27
87	1.33	112.27	112.27	112.27	112.27
88	1.33	112.27	112.27	112.27	112.27
89	1.33	112.27	112.27	112.27	112.27
90	1.33	112.27	112.27	112.27	112.27
91	1.33	112.27	112.27	112.27	112.27
92	1.33	112.27	112.27	112.27	112.27
93	1.33	112.27	112.27	112.27	112.27
94	1.33	112.27	112.27	112.27	112.27
95	1.33	112.27	112.27	112.27	112.27
96	1.33	112.27	112.27	112.27	112.27
97	1.33	112.27	112.27	112.27	112.27
98	1.33	112.27	112.27	112.27	

COUNTY OF SARASOTA  
 PLAT NO. 70198  
 SHEET NO. 1  
 DATE: MAY 19, 2003  
 DRAWN BY: JJK  
 CHECKED BY: DHH  
 REVISION:

# HARRISON WOODS

BEING A PLATTING OF PART OF THE NE 1/4 OF SECTION 16, T4N, R1E OF THE 6th P.M., SARASOTA COUNTY, NEBRASKA  
 LOTS 167 THROUGH 309, AND OUTLOTS D AND E

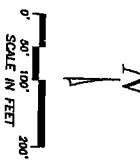
REVIEW BY THE SARASOTA COUNTY SURVEYOR  
 THIS PLAN OF HARRISON WOODS WAS REVIEWED BY THE SARASOTA COUNTY SURVEYOR'S OFFICE  
 ON 05/19/2003 BY: [Signature]  
 TITLE: SURVEYOR

STATE OF NEBRASKA  
 COUNTY OF SARASOTA  
 I, [Signature], County Surveyor, do hereby certify that the above described plat of Harrison Woods, being a platting of part of the NE 1/4 of Section 16, T4N, R1E of the 6th P.M., Sarasota County, Nebraska, containing lots 167 through 309, and outlots D and E, was reviewed by me on the 19th day of May, 2003, and that the same conform to the laws of this State in all respects.

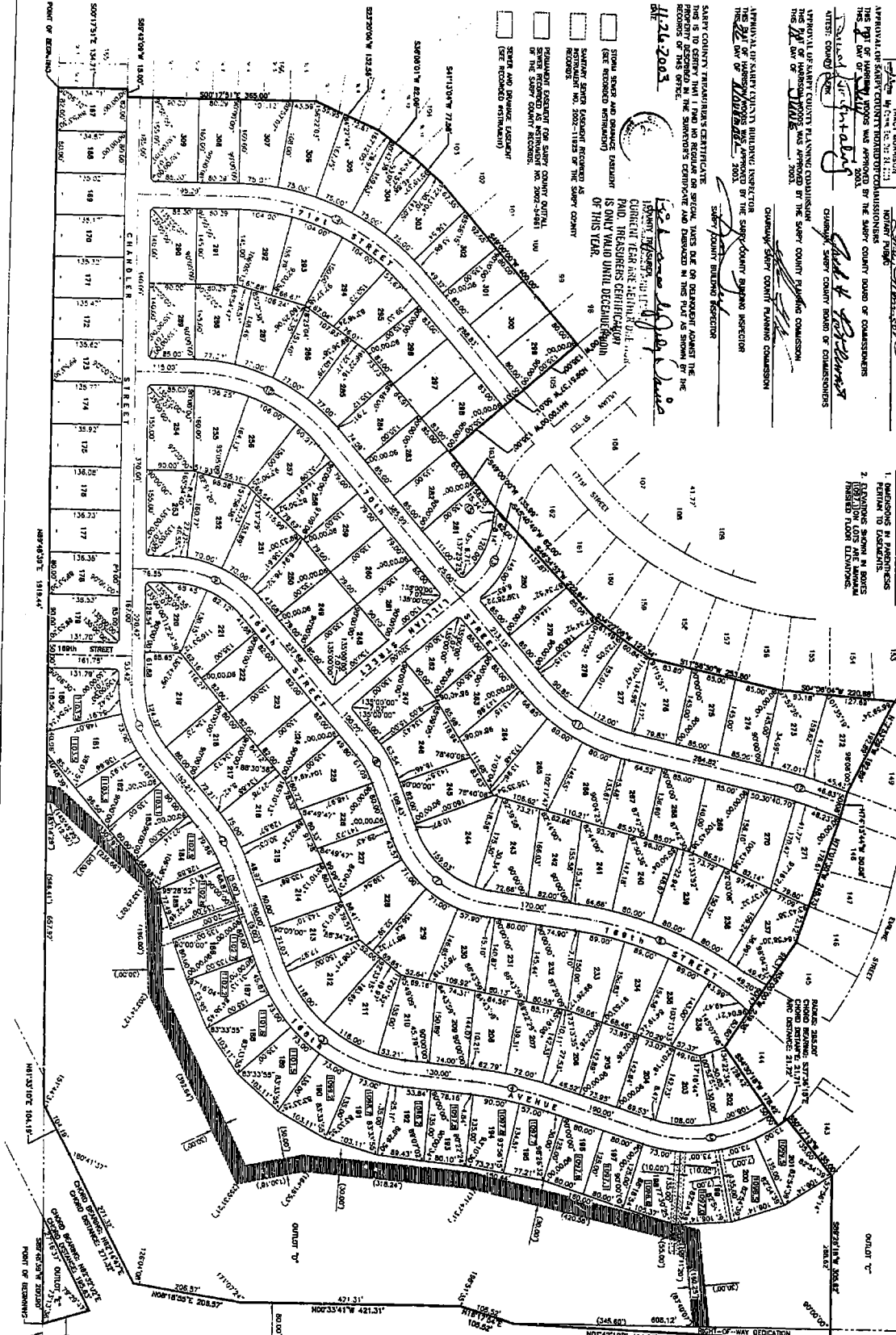
APPROVAL OF SARASOTA COUNTY BOARD OF COMMISSIONERS  
 THE BOARD OF COMMISSIONERS HAS REVIEWED AND APPROVED THE ABOVE DESCRIBED PLAT OF HARRISON WOODS, BEING A PLATTING OF PART OF THE NE 1/4 OF SECTION 16, T4N, R1E OF THE 6th P.M., SARASOTA COUNTY, NEBRASKA, CONTAINING LOTS 167 THROUGH 309, AND OUTLOTS D AND E, ON THIS 15th DAY OF MAY, 2003.

APPROVAL OF SARASOTA COUNTY PLANNING COMMISSION  
 THE PLANNING COMMISSION HAS REVIEWED AND APPROVED THE ABOVE DESCRIBED PLAT OF HARRISON WOODS, BEING A PLATTING OF PART OF THE NE 1/4 OF SECTION 16, T4N, R1E OF THE 6th P.M., SARASOTA COUNTY, NEBRASKA, CONTAINING LOTS 167 THROUGH 309, AND OUTLOTS D AND E, ON THIS 15th DAY OF MAY, 2003.

APPROVAL OF SARASOTA COUNTY BUILDING INSPECTOR  
 THE BUILDING INSPECTOR HAS REVIEWED AND APPROVED THE ABOVE DESCRIBED PLAT OF HARRISON WOODS, BEING A PLATTING OF PART OF THE NE 1/4 OF SECTION 16, T4N, R1E OF THE 6th P.M., SARASOTA COUNTY, NEBRASKA, CONTAINING LOTS 167 THROUGH 309, AND OUTLOTS D AND E, ON THIS 15th DAY OF MAY, 2003.



LOT	ACRES	AREA (SQ. FT.)	PERCENTAGE OF TOTAL AREA
167	0.10	6,912.00	0.10
168	0.10	6,912.00	0.10
169	0.10	6,912.00	0.10
170	0.10	6,912.00	0.10
171	0.10	6,912.00	0.10
172	0.10	6,912.00	0.10
173	0.10	6,912.00	0.10
174	0.10	6,912.00	0.10
175	0.10	6,912.00	0.10
176	0.10	6,912.00	0.10
177	0.10	6,912.00	0.10
178	0.10	6,912.00	0.10
179	0.10	6,912.00	0.10
180	0.10	6,912.00	0.10
181	0.10	6,912.00	0.10
182	0.10	6,912.00	0.10
183	0.10	6,912.00	0.10
184	0.10	6,912.00	0.10
185	0.10	6,912.00	0.10
186	0.10	6,912.00	0.10
187	0.10	6,912.00	0.10
188	0.10	6,912.00	0.10
189	0.10	6,912.00	0.10
190	0.10	6,912.00	0.10
191	0.10	6,912.00	0.10
192	0.10	6,912.00	0.10
193	0.10	6,912.00	0.10
194	0.10	6,912.00	0.10
195	0.10	6,912.00	0.10
196	0.10	6,912.00	0.10
197	0.10	6,912.00	0.10
198	0.10	6,912.00	0.10
199	0.10	6,912.00	0.10
200	0.10	6,912.00	0.10
201	0.10	6,912.00	0.10
202	0.10	6,912.00	0.10
203	0.10	6,912.00	0.10
204	0.10	6,912.00	0.10
205	0.10	6,912.00	0.10
206	0.10	6,912.00	0.10
207	0.10	6,912.00	0.10
208	0.10	6,912.00	0.10
209	0.10	6,912.00	0.10
210	0.10	6,912.00	0.10
211	0.10	6,912.00	0.10
212	0.10	6,912.00	0.10
213	0.10	6,912.00	0.10
214	0.10	6,912.00	0.10
215	0.10	6,912.00	0.10
216	0.10	6,912.00	0.10
217	0.10	6,912.00	0.10
218	0.10	6,912.00	0.10
219	0.10	6,912.00	0.10
220	0.10	6,912.00	0.10
221	0.10	6,912.00	0.10
222	0.10	6,912.00	0.10
223	0.10	6,912.00	0.10
224	0.10	6,912.00	0.10
225	0.10	6,912.00	0.10
226	0.10	6,912.00	0.10
227	0.10	6,912.00	0.10
228	0.10	6,912.00	0.10
229	0.10	6,912.00	0.10
230	0.10	6,912.00	0.10
231	0.10	6,912.00	0.10
232	0.10	6,912.00	0.10
233	0.10	6,912.00	0.10
234	0.10	6,912.00	0.10
235	0.10	6,912.00	0.10
236	0.10	6,912.00	0.10
237	0.10	6,912.00	0.10
238	0.10	6,912.00	0.10
239	0.10	6,912.00	0.10
240	0.10	6,912.00	0.10
241	0.10	6,912.00	0.10
242	0.10	6,912.00	0.10
243	0.10	6,912.00	0.10
244	0.10	6,912.00	0.10
245	0.10	6,912.00	0.10
246	0.10	6,912.00	0.10
247	0.10	6,912.00	0.10
248	0.10	6,912.00	0.10
249	0.10	6,912.00	0.10
250	0.10	6,912.00	0.10
251	0.10	6,912.00	0.10
252	0.10	6,912.00	0.10
253	0.10	6,912.00	0.10
254	0.10	6,912.00	0.10
255	0.10	6,912.00	0.10
256	0.10	6,912.00	0.10
257	0.10	6,912.00	0.10
258	0.10	6,912.00	0.10
259	0.10	6,912.00	0.10
260	0.10	6,912.00	0.10
261	0.10	6,912.00	0.10
262	0.10	6,912.00	0.10
263	0.10	6,912.00	0.10
264	0.10	6,912.00	0.10
265	0.10	6,912.00	0.10
266	0.10	6,912.00	0.10
267	0.10	6,912.00	0.10
268	0.10	6,912.00	0.10
269	0.10	6,912.00	0.10
270	0.10	6,912.00	0.10
271	0.10	6,912.00	0.10
272	0.10	6,912.00	0.10
273	0.10	6,912.00	0.10
274	0.10	6,912.00	0.10
275	0.10	6,912.00	0.10
276	0.10	6,912.00	0.10
277	0.10	6,912.00	0.10
278	0.10	6,912.00	0.10
279	0.10	6,912.00	0.10
280	0.10	6,912.00	0.10
281	0.10	6,912.00	0.10
282	0.10	6,912.00	0.10
283	0.10	6,912.00	0.10
284	0.10	6,912.00	0.10
285	0.10	6,912.00	0.10
286	0.10	6,912.00	0.10
287	0.10	6,912.00	0.10
288	0.10	6,912.00	0.10
289	0.10	6,912.00	0.10
290	0.10	6,912.00	0.10
291	0.10	6,912.00	0.10
292	0.10	6,912.00	0.10
293	0.10	6,912.00	0.10
294	0.10	6,912.00	0.10
295	0.10	6,912.00	0.10
296	0.10	6,912.00	0.10
297	0.10	6,912.00	0.10
298	0.10	6,912.00	0.10
299	0.10	6,912.00	0.10
300	0.10	6,912.00	0.10
301	0.10	6,912.00	0.10
302	0.10	6,912.00	0.10
303	0.10	6,912.00	0.10
304	0.10	6,912.00	0.10
305	0.10	6,912.00	0.10
306	0.10	6,912.00	0.10
307	0.10	6,912.00	0.10
308	0.10	6,912.00	0.10
309	0.10	6,912.00	0.10



HARRISON WOODS, LLC  
 BY: [Signature]  
 MICHAEL L. HERRMAN, MANAGER  
 FIRST NATIONAL BANK OF OMAHA  
 BY: [Signature]  
 ROBERT J. BIRK, VICE PRESIDENT

DEDICATION FOR THESE PURPOSES, THE NE 1/4 OF SECTION 16, T4N, R1E OF THE 6th P.M., SARASOTA COUNTY, NEBRASKA, BEING A PLATTING OF PART OF THE NE 1/4 OF SECTION 16, T4N, R1E OF THE 6th P.M., SARASOTA COUNTY, NEBRASKA, CONTAINING LOTS 167 THROUGH 309, AND OUTLOTS D AND E, IS HEREBY DEDICATED TO THE PUBLIC USE OF THE STATE OF NEBRASKA, TO BE KNOWN AS "HARRISON WOODS". THE DONORS AND THEIR SUCCESSORS, HEIRS, ASSIGNEES, AND OTHERS, DO HEREBY WARRANT AND GUARANTEE THAT THE DONORS HAVE FULL AND COMPLETE TITLE TO THE LAND DESCRIBED IN THIS DEDICATION, AND THAT THE LAND IS FREE FROM ALL ENCUMBRANCES, LIENS, AND OTHER CLAIMS OF ANY KIND OR CHARACTER, AND THAT THE DONORS HAVE THE RIGHT TO CONVEY THE LAND TO THE PUBLIC USE OF THE STATE OF NEBRASKA. THE DONORS AND THEIR SUCCESSORS, HEIRS, ASSIGNEES, AND OTHERS, DO HEREBY WARRANT AND GUARANTEE THAT THE DONORS HAVE FULL AND COMPLETE TITLE TO THE LAND DESCRIBED IN THIS DEDICATION, AND THAT THE LAND IS FREE FROM ALL ENCUMBRANCES, LIENS, AND OTHER CLAIMS OF ANY KIND OR CHARACTER, AND THAT THE DONORS HAVE THE RIGHT TO CONVEY THE LAND TO THE PUBLIC USE OF THE STATE OF NEBRASKA. THE DONORS AND THEIR SUCCESSORS, HEIRS, ASSIGNEES, AND OTHERS, DO HEREBY WARRANT AND GUARANTEE THAT THE DONORS HAVE FULL AND COMPLETE TITLE TO THE LAND DESCRIBED IN THIS DEDICATION, AND THAT THE LAND IS FREE FROM ALL ENCUMBRANCES, LIENS, AND OTHER CLAIMS OF ANY KIND OR CHARACTER, AND THAT THE DONORS HAVE THE RIGHT TO CONVEY THE LAND TO THE PUBLIC USE OF THE STATE OF NEBRASKA.

**THOMPSON, DRESSSEN & DORNER, INC.**  
 Consulting Engineers & Land Surveyors  
 10635 OLD MILL ROAD OMAHA, NEBRASKA 68154  
 TEL: (402)330-8860 FAX: (402)330-8866  
 EMAIL: TD2MAIL@TD2CO.COM WEB: WWW.TD2CO.COM

**HARRISON WOODS**  
 FINAL PLAT

SCALE: 1" = 100'  
 DATE: MAY 19, 2003  
 DRAWN BY: JJK  
 CHECKED BY: DHH  
 REVISION:

2003-70198

11/24/03









