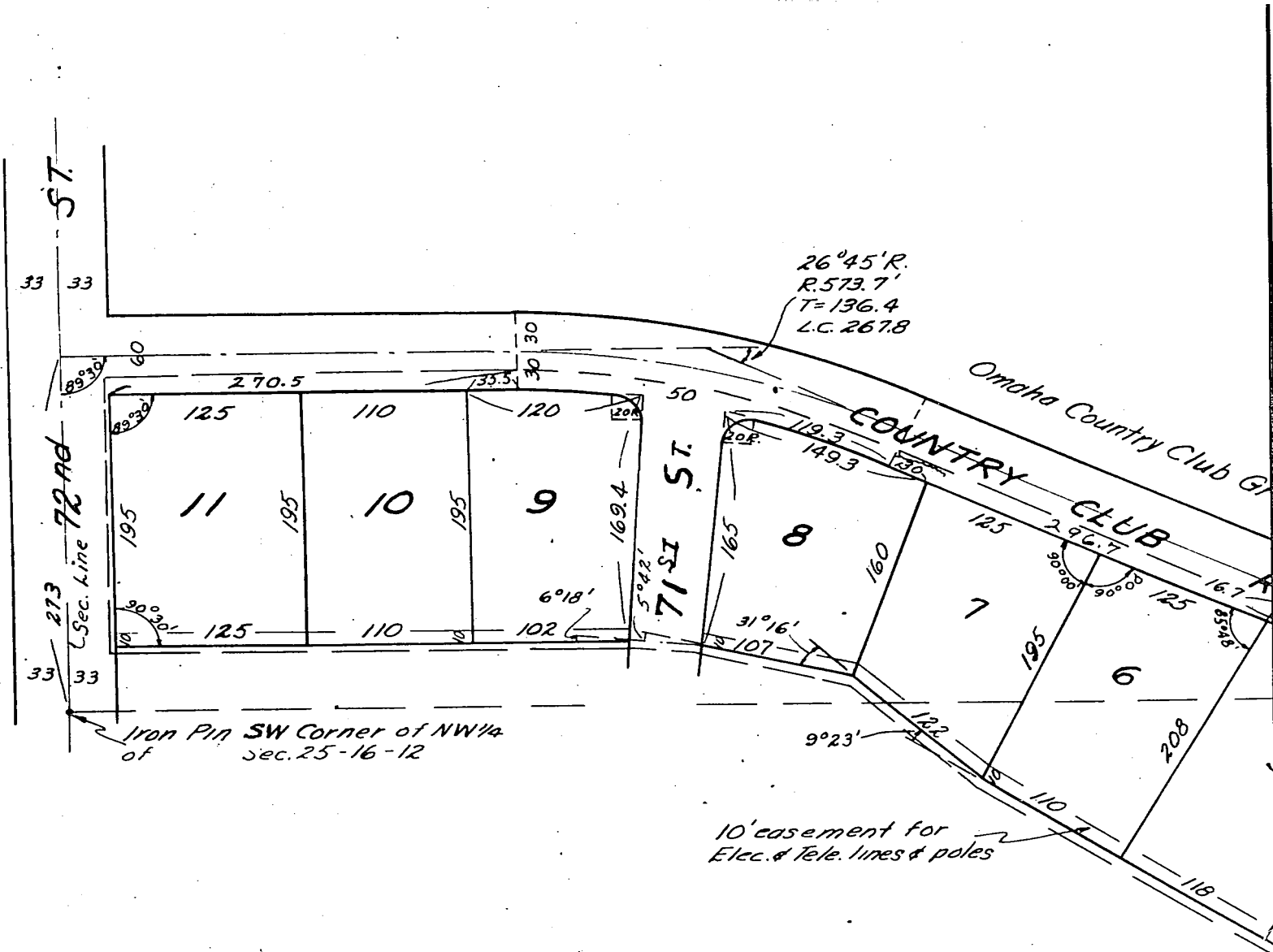


PLAT OF LOTS 1 TO 11 INCLUSIVE IN HANSENS COUNTRY CLUB HILLS IN SEC. 25-T16N-R12E OF THE 6th. P.M. DOUGLAS COUNTY, NEBR

Scale 1" = 100'

July 22, 1955

Surveyor - S.F. Stephens & Associates



UNPLATTED

APPROVAL OF OMAHA CITY PLANNING COMMISSION

This plat of Hansens Country Club Hills was approved by the City Planning Commission of the City of Omaha, Nebraska, this 30th day of Aug, 1955

Harold J. Grove

Chairman of City Planning Commission

COUNTY TREASURER'S CERTIFICATE

This is to Certify that I find no regular or special taxes due, or delinquent against the property described in the Surveyors Certificate and embraced in this plat, as shown by the records of this office on this 7th day of Aug, 1955.

W. A. Howell
County Treasurer

A. Bennett Deputy

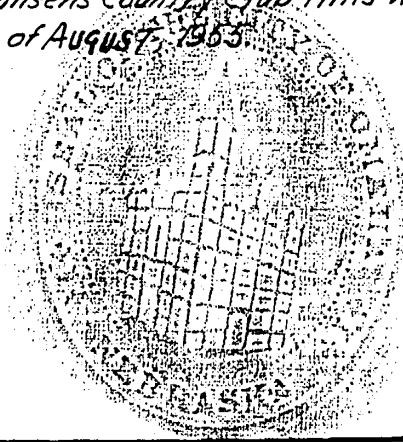
APPROVAL OF CITY ENGINEER OF OMAHA

I hereby approve the plat of Hansens Country Club Hills this 10th day of August, 1955.

B. W. Woodbridge
City Engineer

OMAHA CITY COUNCIL ACCEPTANCE

This plat of Hansens Country Club Hills was approved and accepted by the City Council of the City of Omaha, Nebraska on the 9th day of August, 1955.



ATTEST

M. J. [Signature]
City Clerk

John [Signature]
MAYOR

