

HIGHLAND PARK

LOTS 19 TO 32 INCLUSIVE

DEDICATION

KNOW ALL MEN BY THESE PRESENTS THAT THE ELSHIRE INVESTMENT CO., A NEBRASKA CORPORATION BEING SOLE OWNERS AND PROPRIETORS OF THE LAND DESCRIBED IN THE SURVEYOR'S CERTIFICATE AS SHOWN HEREON AND EMBRACED WITHIN THIS PLAT OF LOTS 19 THROUGH 32 INCLUSIVE, HIGHLAND PARK AS SHOWN HEREON, HAVE CAUSED THE SAME TO BE SUBDIVIDED INTO LOTS AND STREETS AS SHOWN AND WE HEREBY RATIFY AND APPROVE OF THE DISPOSITION OF THE PROPERTY AS SHOWN AND WE HEREBY DEDICATE TO THE PUBLIC FOR PUBLIC USE THE STREETS AS SHOWN HEREON AND GRANT STANDARD POWER POLE AND TELEPHONE POLE EASEMENTS AT ALL REAR AND SIDE LOT LINES CONFORMING TO THE REQUIREMENTS OF THE OMAHA PUBLIC POWER DISTRICT. THE ABOVE SUBDIVISION BEING A PART OF TAX LOT 9 IN THE NORTHWEST QUARTER (NW 1/4) OF THE NORTHWEST QUARTER (NW 1/4) OF SECTION 35, TOWNSHIP 14 NORTH RANGE 12 EAST OF THE 6TH PRINCIPAL MERIDIAN AS IT APPEARS ON THIS PLAT IS MADE WITH FREE CONSENT AND IN ACCORDANCE WITH THE DESIRE OF THE UNDERSIGNED OWNERS AND PROPRIETORS. IN WITNESS WHEREOF THE ELSHIRE INVESTMENT CO. HAVE CAUSED THESE PRESENTS TO BE SIGNED BY T.H. LUNDT PRESIDENT OF THE CORPORATION AND HAVE CAUSED THE CORPORATE SEAL TO BE AFFIXED HERETO.

ELSHIRE INVESTMENT CO., A NEBRASKA CORPORATION
BY: *T.H. Lundt* T.H. LUNDT, PRESIDENT
ATTEST: *M.L. Strong* M.L. STRONG, SECRETARY

ACKNOWLEDGEMENT

STATE OF NEBRASKA S.S.
COUNTY OF DOUGLAS
ON THIS 11 DAY OF OCT A.D. 1966 BEFORE ME A NOTARY PUBLIC, DULY QUALIFIED AND COMMISSIONED IN AND FOR SAID COUNTY, CAME T.H. LUNDT PRESIDENT AND M.L. STRONG SECRETARY OF SAID ELSHIRE INVESTMENT CO. AND WHO ARE PERSONALLY KNOWN BY ME TO BE THE SAME AND IDENTICAL PERSONS WHOSE NAMES ARE AFFIXED TO THE ABOVE DEDICATION AND THEY ACKNOWLEDGED THE SIGNING OF THE ABOVE DEDICATION TO BE THEIR VOLUNTARY ACTS AND DEEDS AND THE VOLUNTARY ACT AND DEED OF SAID CORPORATION.
WITNESS MY HAND AND SEAL AT OMAHA, NEBRASKA IN DOUGLAS COUNTY, THE DATE LAST AFORESAID.

MY COMMISSION EXPIRES ON THE 11 DAY OF OCT A.D. 1970

MORTGAGE RELEASE

KNOW ALL MEN BY THESE PRESENTS THAT VICTOR T. MATTHIES AND MYRTLE I. MATTHIES HUSBAND AND WIFE, MORTGAGEES UNDER THE MORTGAGE DATED 10/17/64 AS RECORDED IN BOOK 150, PAGE 331 OF THE MORTGAGE RECORDS FOR SARPY COUNTY, NEBRASKA DO HEREBY RATIFY AND APPROVE OF THE DISPOSITION OF THE PROPERTY AS SHOWN HEREON IN THIS PLATTING OF LOTS 19 TO 32 INCLUSIVE HIGHLAND PARK AND DO HEREBY RELEASE SAID MORTGAGE ON THE LAND DESCRIBED HEREON FOR PUBLIC USE AS SHOWN HEREON WITHOUT PREJUDICE TO THE LIEN OF THE MORTGAGE ON THE BALANCE OF THE LAND DESCRIBED HEREON.
IN WITNESS WHEREOF WE DO HERETO SET OUR HANDS ON THIS 5th DAY OF Feb A.D. 1966

VICTOR T. MATTHIES (HUSBAND) *Victor T. Matthies*
MYRTLE I. MATTHIES (WIFE) *Myrtle I. Matthies*

ACKNOWLEDGEMENT

STATE OF NEBRASKA S.S.
COUNTY OF SARPY
ON THIS 5th DAY OF Feb A.D. 1966 BEFORE ME A NOTARY PUBLIC DULY COMMISSIONED AND QUALIFIED IN AND FOR SAID COUNTY, CAME VICTOR T. MATTHIES AND MYRTLE I. MATTHIES HUSBAND AND WIFE WHO ARE PERSONALLY KNOWN BY ME TO BE THE SAME AND IDENTICAL PERSONS WHOSE NAMES ARE AFFIXED TO THE ABOVE MORTGAGE RELEASE AND THEY ACKNOWLEDGE THE EXECUTION THEREOF TO BE THEIR VOLUNTARY ACTS AND DEEDS.
WITNESS MY HAND AND OFFICIAL SEAL AT PAPIILLON, NEBRASKA IN SAID COUNTY, THE DATE LAST AFORESAID.

NOTARY PUBLIC
MY COMMISSION EXPIRES ON THE 14 DAY OF APR A.D. 1970

COUNTY TREASURER'S CERTIFICATE

THIS IS TO CERTIFY THAT I FIND NO REGULAR OR SPECIAL TAXES DUE OR DELINQUENT AGAINST THE PROPERTY DESCRIBED IN THE SURVEYOR'S CERTIFICATE AND EMBRACED WITHIN THIS PLAT AS SHOWN BY THE RECORDS OF THIS OFFICE.
DATE 4-1-66 1966

COUNTY TREASURER, SARPY COUNTY

APPROVAL OF SARPY COUNTY SURVEYOR

I HEREBY APPROVE THIS PLATTING OF LOTS 19 TO 32 INCLUSIVE, HIGHLAND PARK ON THIS 5th DAY OF APR A.D. 1966
Norman Whitney
COUNTY SURVEYOR, SARPY COUNTY

APPROVAL OF BOARD OF EDUCATION

THIS PLATTING OF LOTS 19 TO 32 INCLUSIVE, HIGHLAND PARK WAS APPROVED BY THE BOARD OF EDUCATION OF SCHOOL DISTRICT 27 OF SARPY COUNTY, NEBRASKA ON THIS 5th DAY OF APR 1966.

BY: *John M. Mueggen* PRESIDENT SCHOOL BOARD
ATTEST: *Raymond A. Lanning* SECRETARY

APPROVAL OF PAPIILLON CITY PLANNING BOARD

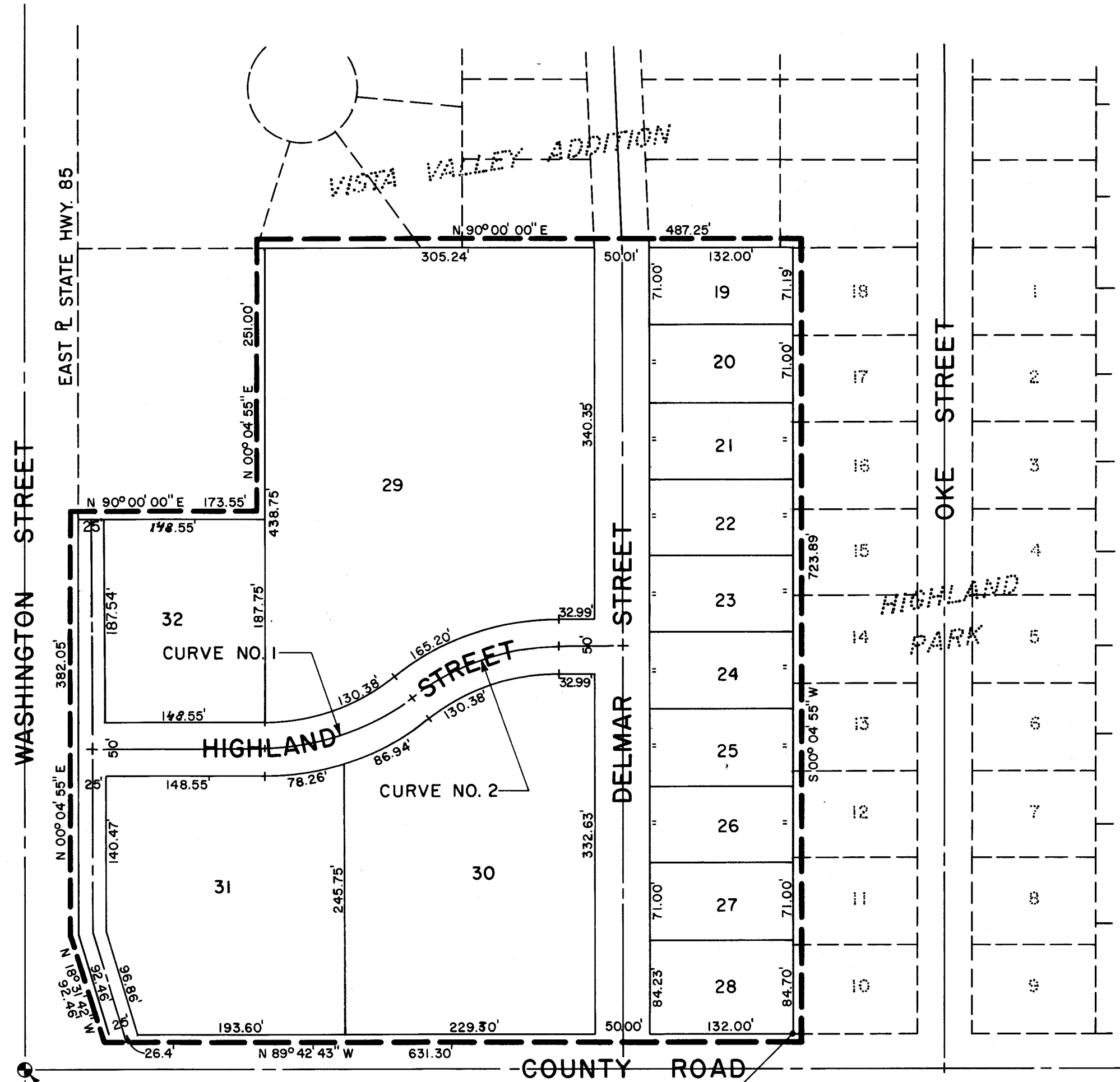
THIS PLATTING OF LOTS 19 TO 32 INCLUSIVE, HIGHLAND PARK WAS APPROVED BY THE CITY PLANNING BOARD OF THE CITY OF PAPIILLON, NEBRASKA ON THIS 24th DAY OF Feb A.D. 1966.

CHAIRMAN OF CITY PLANNING BOARD
PAPIILLON, NEBRASKA

PAPIILLON CITY COUNCIL ACCEPTANCE

THIS PLATTING OF LOTS 19 TO 32 INCLUSIVE, HIGHLAND PARK WAS APPROVED AND ACCEPTED BY THE CITY COUNCIL OF THE CITY OF PAPIILLON, NEBRASKA ON THIS 24th DAY OF Feb A.D. 1966.

CITY CLERK
PAPIILLON, NEBRASKA
MAYOR
PAPIILLON, NEBRASKA



CURVE DATA

NO. 1	NO. 2
Δ 39°54'38"	Δ 39°54'38"
R 212.17'	R 212.17'
T 77.04'	T 77.04'
L 147.79'	L 147.79'

SURVEYOR'S CERTIFICATE

I HEREBY CERTIFY THAT I HAVE ACCURATELY SURVEYED AND STAKED WITH IRON PINS ALL CORNERS OF ALL LOTS AND THE STREET IN THIS PLATTING OF LOTS 19 TO 32 INCLUSIVE, HIGHLAND PARK AN ADDITION TO SARPY COUNTY, NEBRASKA AND THAT SAID PLATTING IS PART OF TAX LOT 9 IN THE NORTHWEST QUARTER (NW 1/4) OF THE NORTHWEST QUARTER (NW 1/4) OF SECTION 35, TOWNSHIP 14 NORTH RANGE 12 EAST OF THE 6TH PRINCIPAL MERIDIAN ALL IN SAID SARPY COUNTY, NEBRASKA, MORE PARTICULARLY DESCRIBED AND BOUNDED AS FOLLOWS:
COMMENCING AT A POINT WHICH IS THE SOUTHWEST CORNER OF SAID NORTHWEST QUARTER (NW 1/4) OF THE NORTHWEST QUARTER (NW 1/4); THENCE, ASSUMING THE WEST PROPERTY LINE OF SAID NORTHWEST QUARTER (NW 1/4) OF THE NORTHWEST QUARTER (NW 1/4) TO BE ON A BEARING OF N 00°04'55"E, ON A BEARING OF S 89°42'43"E AND RUNNING SOUTHEASTERLY FOR A DISTANCE OF 710.11 FEET TO A POINT; THENCE ON A BEARING OF N 00°04'55"E AND RUNNING NORTHEASTERLY FOR A DISTANCE OF 33.00 FEET TO THE TRUE POINT OF BEGINNING; THENCE ON A BEARING OF N 89°42'43"W AND RUNNING NORTHEASTERLY FOR A DISTANCE OF 631.30 FEET TO A POINT; THENCE ON A BEARING OF N 18°31'42"W AND RUNNING NORTHEASTERLY FOR A DISTANCE OF 92.46 FEET TO A POINT; THENCE ON A BEARING OF N 00°04'55"E AND RUNNING NORTHEASTERLY FOR A DISTANCE OF 382.05 FEET TO A POINT; THENCE ON A BEARING OF N 90°00'00"E AND RUNNING EASTERLY FOR A DISTANCE OF 173.55 FEET; THENCE ON A BEARING OF N 00°04'55"E AND RUNNING NORTHEASTERLY FOR A DISTANCE OF 251.00 FEET; THENCE ON A BEARING OF N 90°00'00"E AND RUNNING EASTERLY FOR A DISTANCE OF 487.25 FEET TO A POINT SAID POINT ALSO BEING THE NORTHWEST CORNER OF LOT 18, HIGHLAND PARK AN ADDITION TO SARPY COUNTY, NEBRASKA AS SURVEYED, PLATTED AND RECORDED; THENCE ON A BEARING OF S 00°04'55"W AND RUNNING SOUTHWESTERLY ALONG THE WEST PROPERTY LINES OF LOTS 10 TO 18 INCLUSIVE IN SAID HIGHLAND PARK FOR A DISTANCE OF 723.89 FEET TO THE TRUE POINT OF BEGINNING.
IN WITNESS WHEREOF I DO HERETO SET MY HAND AND OFFICIAL SEAL AT OMAHA, NEBRASKA ON THIS 24th DAY OF Jan, 1966 A.D.

Francis J. Naughton
FRANCIS J. NAUGHTON L.S. NO. 075
HENNINGSON, DURHAM & RICHARDSON, INC.
CONSULTING ENGINEERS, ARCHITECTS & PLANNERS

HENNINGSON, DURHAM & RICHARDSON, Inc.
ENGINEERS - PLANNERS - CONSULTANTS
OMAHA, NEBR. DENVER, COLO. PHOENIX, ARIZ. DALLAS, TEX.