

GRETNA BUSINESS PARK

97-28604

LOTS 6, 7, 8 AND 9, AND OUTLOTS A AND B

BEING A PART OF PART OF SA LOT 1 IN THE 1/4 OF SECTION 25, T14N, R12E OF THE 6TH P.M., SAPPY COUNTY, NEBRASKA, TOGETHER WITH PART OF SA LOT 2 IN THE SW 1/4 OF SECTION 30, T14N, R12E OF THE 6TH P.M., SAID SAPPY COUNTY.

SAPPY COUNTY TREASURER'S CERTIFICATE

THIS IS TO CERTIFY THAT I FIND NO REGULAR OR SPECIAL TAXES DUE OR DELINQUENT AGAINST THE PROPERTY DESCRIBED IN THE SURVEYOR'S CERTIFICATE AND ENDORSED WITHIN THIS PLAT AS SHOWN BY THE RECORDS OF THIS OFFICE.

I AM THIS DATE _____ 1987.

COUNTY TREASURER

APPROVAL OF THE GRETNA CITY PLANNING BOARD

THIS PLAT OF SA BUSINESS PARK WAS APPROVED BY THE GRETNA CITY PLANNING BOARD THIS DATE _____ 1987.

John Wick
CHAIRMAN, GRETNA YOUNG MEN'S BOARD

APPROVAL OF THE GRETNA CITY COUNCIL

THIS PLAT OF SA BUSINESS PARK WAS APPROVED BY THE GRETNA CITY COUNCIL THIS DATE _____ 1987.

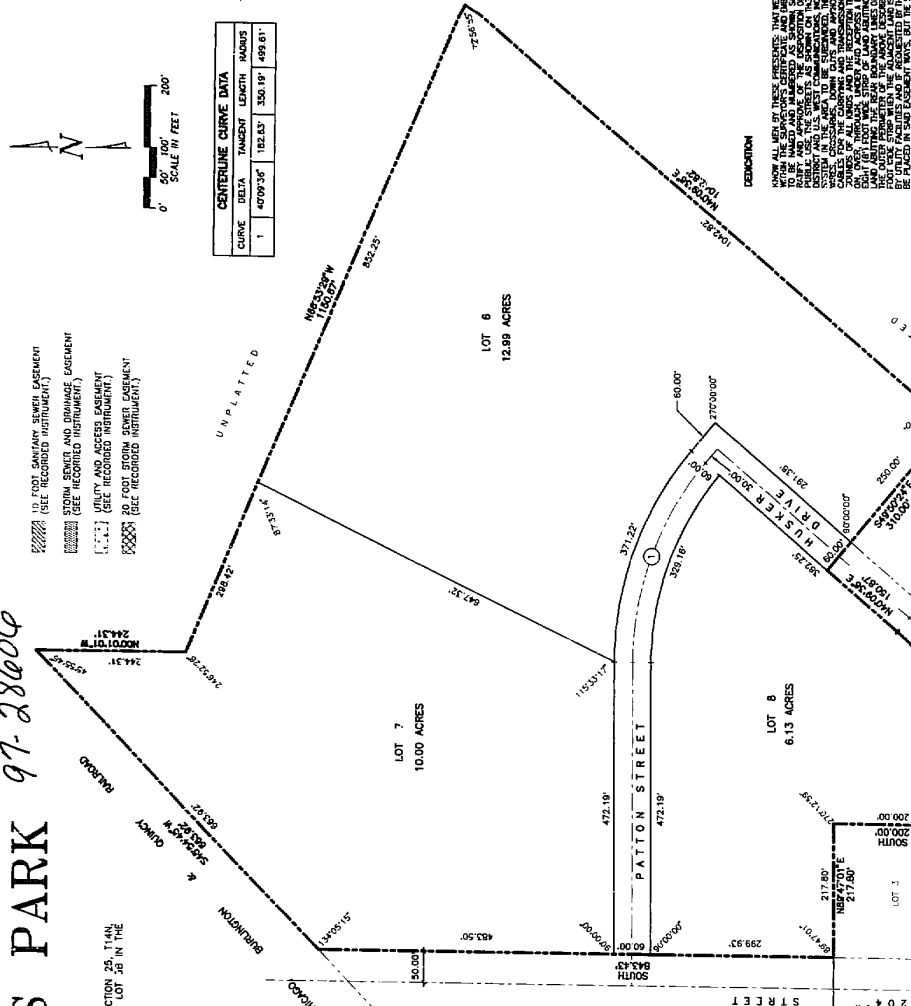
John Wick
CITY CLERK

APPROVAL OF THE SAPPY COUNTY SURVEYOR

I HEREBY APPROVE THIS PLAT OF SA BUSINESS PARK ON THIS DATE _____ 1987.



Thomas A. Lyman
SAPPY COUNTY SURVEYOR



UNPLATTED

10' FOOT SANITARY SEWER EASEMENT
(SEE RECORDED INSTRUMENT)

STORM SEWER AND DRAINAGE EASEMENT
(SEE RECORDED INSTRUMENT)

UTILITY AND ACCESS EASEMENT
(SEE RECORDED INSTRUMENT)

8' OR GREATER EASEMENT
(SEE RECORDED INSTRUMENT)

UNPLATTED

UNPLATTED

UNPLATTED

UNPLATTED

10' FOOT SANITARY SEWER EASEMENT
(SEE RECORDED INSTRUMENT)

STORM SEWER AND DRAINAGE EASEMENT
(SEE RECORDED INSTRUMENT)

UTILITY AND ACCESS EASEMENT
(SEE RECORDED INSTRUMENT)

8' OR GREATER EASEMENT
(SEE RECORDED INSTRUMENT)

UNPLATTED

UNPLATTED

UNPLATTED

UNPLATTED

UNPLATTED

UNPLATTED

UNPLATTED

UNPLATTED

UNPLATTED

UNPLATTED

UNPLATTED

UNPLATTED

UNPLATTED

UNPLATTED

UNPLATTED

UNPLATTED

UNPLATTED

UNPLATTED

UNPLATTED

UNPLATTED

UNPLATTED

UNPLATTED

UNPLATTED

UNPLATTED

UNPLATTED

UNPLATTED

UNPLATTED

UNPLATTED

UNPLATTED

UNPLATTED

UNPLATTED

UNPLATTED

UNPLATTED

UNPLATTED

UNPLATTED

UNPLATTED

UNPLATTED

UNPLATTED

UNPLATTED

UNPLATTED

UNPLATTED

UNPLATTED

UNPLATTED

UNPLATTED

UNPLATTED

UNPLATTED

UNPLATTED

UNPLATTED

UNPLATTED

UNPLATTED

UNPLATTED

UNPLATTED

UNPLATTED

UNPLATTED

UNPLATTED

UNPLATTED

UNPLATTED

UNPLATTED

UNPLATTED

UNPLATTED

UNPLATTED

UNPLATTED

UNPLATTED

UNPLATTED

UNPLATTED

UNPLATTED

UNPLATTED

UNPLATTED

UNPLATTED

UNPLATTED

UNPLATTED

UNPLATTED

UNPLATTED

UNPLATTED

UNPLATTED

UNPLATTED

UNPLATTED

UNPLATTED

UNPLATTED

UNPLATTED

UNPLATTED

UNPLATTED

UNPLATTED

UNPLATTED

UNPLATTED

UNPLATTED

UNPLATTED

UNPLATTED

UNPLATTED

UNPLATTED

UNPLATTED

UNPLATTED

UNPLATTED

UNPLATTED

UNPLATTED

UNPLATTED

UNPLATTED

UNPLATTED

UNPLATTED

UNPLATTED

UNPLATTED

UNPLATTED

UNPLATTED

UNPLATTED

UNPLATTED

UNPLATTED

UNPLATTED

UNPLATTED

UNPLATTED

UNPLATTED

UNPLATTED

UNPLATTED

UNPLATTED

UNPLATTED

UNPLATTED

UNPLATTED

UNPLATTED

UNPLATTED

UNPLATTED

UNPLATTED

UNPLATTED

UNPLATTED

UNPLATTED

UNPLATTED

UNPLATTED

UNPLATTED

UNPLATTED

UNPLATTED

UNPLATTED

UNPLATTED

UNPLATTED

UNPLATTED

UNPLATTED

UNPLATTED

UNPLATTED

UNPLATTED

UNPLATTED

UNPLATTED

UNPLATTED

UNPLATTED

UNPLATTED

UNPLATTED

UNPLATTED

UNPLATTED

UNPLATTED

UNPLATTED

UNPLATTED

UNPLATTED

UNPLATTED

UNPLATTED

UNPLATTED

UNPLATTED

UNPLATTED

UNPLATTED

UNPLATTED

UNPLATTED

UNPLATTED

UNPLATTED

UNPLATTED

UNPLATTED

UNPLATTED

UNPLATTED

UNPLATTED

UNPLATTED

UNPLATTED

UNPLATTED

UNPLATTED

UNPLATTED

UNPLATTED

UNPLATTED

UNPLATTED

UNPLATTED

UNPLATTED

UNPLATTED

UNPLATTED

UNPLATTED

UNPLATTED

UNPLATTED

UNPLATTED

UNPLATTED

UNPLATTED

UNPLATTED

UNPLATTED

UNPLATTED

UNPLATTED

UNPLATTED

UNPLATTED

UNPLATTED

UNPLATTED

UNPLATTED

UNPLATTED

UNPLATTED

UNPLATTED

UNPLATTED

UNPLATTED

UNPLATTED

UNPLATTED

UNPLATTED

UNPLATTED

UNPLATTED

UNPLATTED

UNPLATTED

UNPLATTED

UNPLATTED

UNPLATTED

UNPLATTED

UNPLATTED

UNPLATTED

UNPLATTED

UNPLATTED

UNPLATTED

UNPLATTED

UNPLATTED

UNPLATTED

UNPLATTED

UNPLATTED

UNPLATTED

UNPLATTED

UNPLATTED

UNPLATTED

UNPLATTED

UNPLATTED

UNPLATTED

UNPLATTED

UNPLATTED

UNPLATTED

UNPLATTED

UNPLATTED

UNPLATTED

UNPLATTED

UNPLATTED

UNPLATTED

UNPLATTED

UNPLATTED

UNPLATTED

UNPLATTED

UNPLATTED

UNPLATTED

UNPLATTED

UNPLATTED

UNPLATTED

UNPLATTED

UNPLATTED

UNPLATTED

UNPLATTED

UNPLATTED

UNPLATTED

UNPLATTED

UNPLATTED

UNPLATTED

UNPLATTED

UNPLATTED

UNPLATTED

UNPLATTED

UNPLATTED

UNPLATTED

UNPLATTED

UNPLATTED

UNPLATTED

UNPLATTED

AS SHOWN	DATE	BY	BY
OCT 7, 1987	DATE	JMK	DATE
		DHN	

GRETNA BUSINESS PARK
FINAL PLAT

OCTOBER 7, 1987
DATE
DAVID W. WOOD
NEBRASKA, U.S.A. 68506

K & I CONSTRUCTION COMPANY, PARTNERSHIP
BY E. W. W. WOOD, PARTNER
R. W. W. WOOD, PARTNER

THOMPSON, DRESSSEN & DORNER, INC.
CONSULTING ENGINEERS & LAND SURVEYORS
10836 OLD MILL ROAD
OMAHA, NE 68134
(402) 330-6900

639-117
483917ALWG

UNPLATTED

UNPLATTED

UNPLATTED

UNPLATTED

UNPLATTED

UNPLATTED

UNPLATTED

UNPLATTED

UNPLATTED

UNPLATTED

UNPLATTED

UNPLATTED

UNPLATTED

UNPLATTED

UNPLATTED

UNPLATTED

UNPLATTED

UNPLATTED

UNPLATTED

UNPLATTED

UNPLATTED

UNPLATTED

UNPLATTED

UNPLATTED

UNPLATTED

UNPLATTED

UNPLATTED

UNPLATTED

UNPLATTED

UNPLATTED

UNPLATTED

UNPLATTED

UNPLATTED

UNPLATTED

UNPLATTED

UNPLATTED

UNPLATTED

UNPLATTED

UNPLATTED

UNPLATTED

UNPLATTED

UNPLATTED

UNPLATTED

UNPLATTED

UNPLATTED

UNPLATTED

UNPLATTED

UNPLATTED

UNPLATTED

UNPLATTED

UNPLATTED

UNPLATTED

UNPLATTED

UNPLATTED

UNPLATTED

UNPLATTED