

GREEN MEADOWS

A REPLAT OF TAX LOT IIA AND PART OF TAX LOT IIB, LOCATED IN THE SOUTHWEST QUARTER OF SECTION 22, TOWNSHIP 14 NORTH, RANGE 13 EAST OF THE 6th PM., SARY COUNTY, NEBRASKA

18 May 1978
 I, *Joseph P. Verawacke*
 DONALD H. VERAWACKE, President

IN WITNESS WHEREOF, WE DO SET OR NAMES THIS 18th DAY OF May, 1978.

Joseph P. Verawacke
 DONALD H. VERAWACKE, President

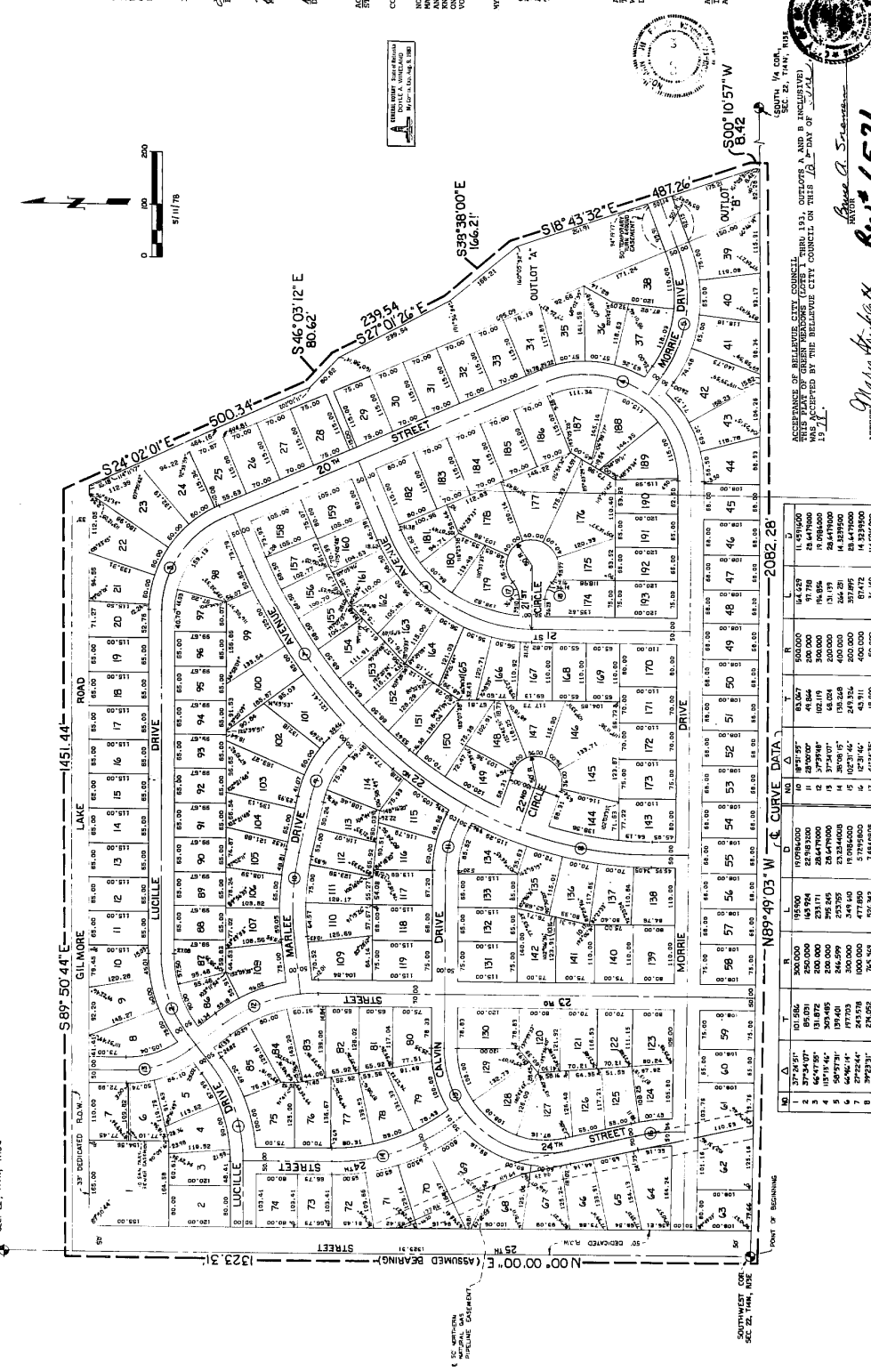
ACKNOWLEDGMENT OF NOTARY
 STATE OF NEBRASKA
 COUNTY OF SARY
 I, *Donald H. Verawacke*
 DONALD H. VERAWACKE, President

COMMISSION EXPIRES Aug 9 1980
 I, *Joseph P. Verawacke*
 DONALD H. VERAWACKE, President

APPROVAL OF BELLEVUE CITY PLANNING COMMISSION
 BELLEVUE CITY PLANNING COMMISSION
 BELLEVUE CITY, NEBRASKA

APPROVAL OF SARY COUNTY SURVEYORS
 SARY COUNTY SURVEYORS
 SARY COUNTY, NEBRASKA

DESIGN ENGINEERING, INC.
 LAND SURVEYORS ENGINEERS PLANNERS
 1103 GALVIN RD. SOUTH-BELLEVUE, NEBRASKA 68005
 402-231-8100



SURVEYOR'S CERTIFICATE: THE UNDERSIGNED REGISTERED LAND SURVEYORS DO HEREBY CERTIFY THAT I HAVE ACCURATELY SURVEYED AND WILL STAKE WITH IRON PINS ALL CORNERS AND POINTS OF THE ABOVE DESCRIBED TRACT OF LAND AND THE BOUNDARIES THEREOF, AND THAT THE SAME ARE CORRECTLY LOCATED AND THE DISTANCES AND BEARINGS ARE CORRECTLY SET OUT THEREON. I HAVE ALSO CAUSED TO BE SURVEYED AND STAKED THE BOUNDARIES OF THE GREEN MEADOWS, AND DO HEREBY CERTIFY THAT THE SAME ARE CORRECTLY LOCATED AND THE DISTANCES AND BEARINGS ARE CORRECTLY SET OUT THEREON. I HAVE ALSO CAUSED TO BE SURVEYED AND STAKED THE BOUNDARIES OF THE GREEN MEADOWS, AND DO HEREBY CERTIFY THAT THE SAME ARE CORRECTLY LOCATED AND THE DISTANCES AND BEARINGS ARE CORRECTLY SET OUT THEREON. I HAVE ALSO CAUSED TO BE SURVEYED AND STAKED THE BOUNDARIES OF THE GREEN MEADOWS, AND DO HEREBY CERTIFY THAT THE SAME ARE CORRECTLY LOCATED AND THE DISTANCES AND BEARINGS ARE CORRECTLY SET OUT THEREON.

RECITATION: KNOW ALL MEN BY THESE PRESENTS THAT NE, LUCILLE A. VERAWACKE, MARLEE M. VERAWACKE, CALVIN M. VERAWACKE, MOORIE M. VERAWACKE, DONALD H. VERAWACKE, MARY R. MCCORMACK, AND HENRIETTA M. VERAWACKE, ALL OF THE COUNTY OF SARY, STATE OF NEBRASKA, HAVE CAUSED LAND TO BE SURVEYED AND STAKED AS SHOWN ON THIS PLAT, AND DO HEREBY CERTIFY THAT THE SAME ARE CORRECTLY LOCATED AND THE DISTANCES AND BEARINGS ARE CORRECTLY SET OUT THEREON. WE DO ALSO GRANT A PERPETUAL EASEMENT TO THE SUCCESSORS AND ASSIGNS, TO ERECT, OPERATE, MAINTAIN, REPAIR AND RENEW, POLES, WIRES OF CABLES FOR THE TRANSMISSION AND CONDUCTION OF ELECTRICITY, TELEPHONE, HEAT AND POWER AND FOR THE TRANSMISSION OF SIGNALS AND SOUNDS OF ALL KINDS AND CHARACTER, AND TO ERECT, OPERATE, MAINTAIN, REPAIR AND RENEW, POLES AND TOWERS OF LAND ABUTTING ALL FRONT AND SIDE BOUNDARY LOT LINES, AND AN EIGHT FOOT (8') WIDE EASEMENT TO BE AFFRONT TO AN EIGHT FOOT (8') WIDE STRIP WHEN THE ADJACENT LOTS FORMING THE FRONT BOUNDARY OF THE TRACT ARE TO BE USED FOR THE PURPOSES OF PLACING, MAINTAINING, REPAIRING AND RENEWING THE SAME. WE DO NOT GRANT ANY OTHER RIGHTS HEREIN GRANTED.

IN WITNESS WHEREOF, WE DO SET OR NAMES THIS 18th DAY OF May, 1978.

Joseph P. Verawacke
 DONALD H. VERAWACKE, President

Donald H. Verawacke
 DONALD H. VERAWACKE, President

ACKNOWLEDGMENT OF NOTARY
 STATE OF NEBRASKA
 COUNTY OF SARY
 I, *Donald H. Verawacke*
 DONALD H. VERAWACKE, President

COMMISSION EXPIRES Aug 9 1980
 I, *Joseph P. Verawacke*
 DONALD H. VERAWACKE, President

APPROVAL OF BELLEVUE CITY PLANNING COMMISSION
 BELLEVUE CITY PLANNING COMMISSION
 BELLEVUE CITY, NEBRASKA

APPROVAL OF SARY COUNTY SURVEYORS
 SARY COUNTY SURVEYORS
 SARY COUNTY, NEBRASKA

DESIGN ENGINEERING, INC.
 LAND SURVEYORS ENGINEERS PLANNERS
 1103 GALVIN RD. SOUTH-BELLEVUE, NEBRASKA 68005
 402-231-8100