



Rev	Desc	Date	By	App'd
1	Issue for Review	10/12/16	[Signature]	[Signature]
2	Issue for Record	10/28/16	[Signature]	[Signature]
3	Issue for Recording	11/01/16	[Signature]	[Signature]
4	Issue for Recording	11/01/16	[Signature]	[Signature]

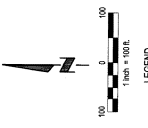
FILED COUNTY CLERK, NEWBURN, NORTH CAROLINA
INSTRUMENT NUMBER
2016-24174
09/20/2016 11:07:39 AM
RECEIVED
CLERK OF DEEDS
Newburn, NC

GARDEN OAKS

LOTS 1 THRU 47 INCLUSIVE AND OUTLOTS "A", "B" AND "C"

REALLY TRACT IS A PART OF THE BEING PART OF THE SECTION 16, RANGE 10E, TOWNSHIP 35N, COUNTY TARRANT, NORTH CAROLINA.
THE BEING PART OF THE SECTION 16, RANGE 10E, TOWNSHIP 35N, COUNTY TARRANT, NORTH CAROLINA.

BOUNDARY SURVEY
HERBERT COUNTY THAT HAVE MAPS, SURVEYS AND RECORDS OF THE BOUNDARIES DESCRIBED HEREIN.
AND PERMANENT RECORDS AND PLATS AT ALL CORNERS OF ALL LOTS, STREETS AND TRACTS.
THE BEING PART OF THE SECTION 16, RANGE 10E, TOWNSHIP 35N, COUNTY TARRANT, NORTH CAROLINA.
THE BEING PART OF THE SECTION 16, RANGE 10E, TOWNSHIP 35N, COUNTY TARRANT, NORTH CAROLINA.
THE BEING PART OF THE SECTION 16, RANGE 10E, TOWNSHIP 35N, COUNTY TARRANT, NORTH CAROLINA.



- BOUNDARY LINE
- RIGHT OF WAY LINE
- LOT LINE
- EMPHASIS
- EAST SECTION CORNER
- EAST SECTION LINES

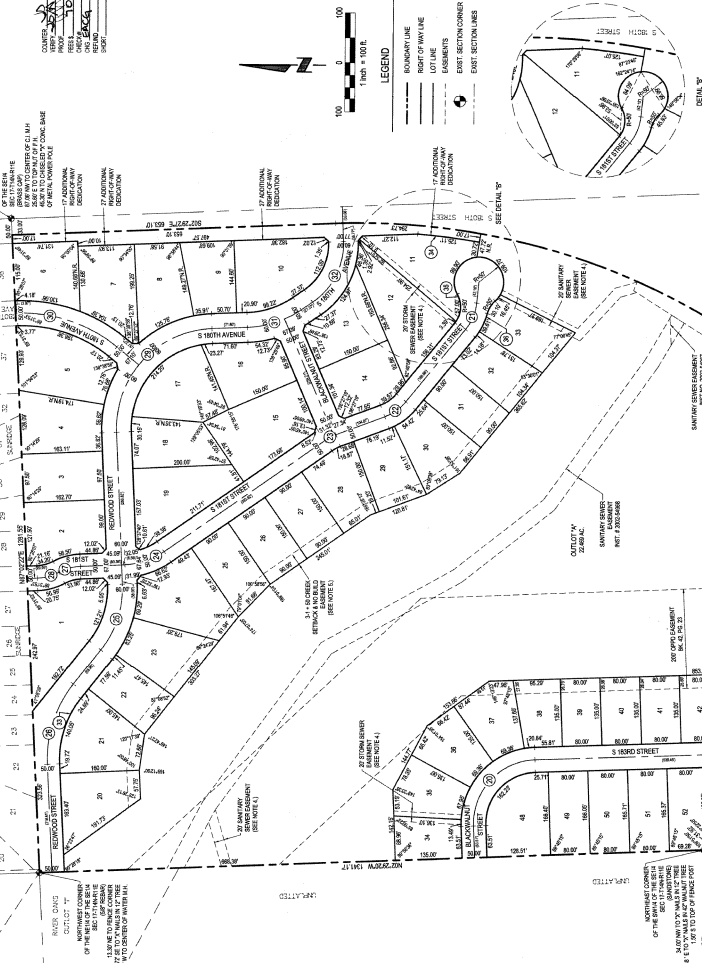
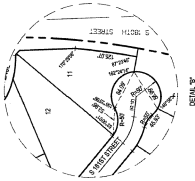


TABLE OF LOTS AND CORNERS

LOT NO.	AREA (SQ. FT.)	AREA (SQ. YDS.)	AREA (AC.)
1	24,814	570.1	0.58
2	14,962	342.1	0.35
3	15,300	350.6	0.36
4	15,300	350.6	0.36
5	15,300	350.6	0.36
6	15,300	350.6	0.36
7	15,300	350.6	0.36
8	15,300	350.6	0.36
9	15,300	350.6	0.36
10	15,300	350.6	0.36
11	15,300	350.6	0.36
12	15,300	350.6	0.36
13	15,300	350.6	0.36
14	15,300	350.6	0.36
15	15,300	350.6	0.36
16	15,300	350.6	0.36
17	15,300	350.6	0.36
18	15,300	350.6	0.36
19	15,300	350.6	0.36
20	15,300	350.6	0.36
21	15,300	350.6	0.36
22	15,300	350.6	0.36
23	15,300	350.6	0.36
24	15,300	350.6	0.36
25	15,300	350.6	0.36
26	15,300	350.6	0.36
27	15,300	350.6	0.36
28	15,300	350.6	0.36
29	15,300	350.6	0.36
30	15,300	350.6	0.36
31	15,300	350.6	0.36
32	15,300	350.6	0.36
33	15,300	350.6	0.36
34	15,300	350.6	0.36
35	15,300	350.6	0.36
36	15,300	350.6	0.36
37	15,300	350.6	0.36

DESCRIPTION
THE TRACT IS A PART OF THE BEING PART OF THE SECTION 16, RANGE 10E, TOWNSHIP 35N, COUNTY TARRANT, NORTH CAROLINA.
THE BEING PART OF THE SECTION 16, RANGE 10E, TOWNSHIP 35N, COUNTY TARRANT, NORTH CAROLINA.
THE BEING PART OF THE SECTION 16, RANGE 10E, TOWNSHIP 35N, COUNTY TARRANT, NORTH CAROLINA.
THE BEING PART OF THE SECTION 16, RANGE 10E, TOWNSHIP 35N, COUNTY TARRANT, NORTH CAROLINA.
THE BEING PART OF THE SECTION 16, RANGE 10E, TOWNSHIP 35N, COUNTY TARRANT, NORTH CAROLINA.
THE BEING PART OF THE SECTION 16, RANGE 10E, TOWNSHIP 35N, COUNTY TARRANT, NORTH CAROLINA.

APPROVAL OF SPARTAN COUNTY PLANNING COMMISSION
THE FINAL PLAN OF GARDEN OAKS WAS APPROVED BY THE SPARTAN COUNTY PLANNING COMMISSION ON [Date] BY [Signature].
APPROVAL OF SPARTAN COUNTY PLANNING COMMISSION
THE FINAL PLAN OF GARDEN OAKS WAS APPROVED BY THE SPARTAN COUNTY PLANNING COMMISSION ON [Date] BY [Signature].

APPROVAL OF SPARTAN COUNTY PLANNING COMMISSION
THE FINAL PLAN OF GARDEN OAKS WAS APPROVED BY THE SPARTAN COUNTY PLANNING COMMISSION ON [Date] BY [Signature].

NOTES
1. ALL ANGLES ARE BY VALUES OTHERWISE NOTED.
2. ALL LOT LINES ARE TO BE PERPENDICULAR UNLESS OTHERWISE SHOWN.
3. DIMENSIONS UNLESS OTHERWISE SHOWN ARE FOR THE CENTERLINE.
4. ALL DIMENSIONS THAT ARE NOT DIMENSIONED WITH A DIMENSION LINE SHALL BE MEASURED BY A SEPARATE DOCUMENT.
5. CORNER REFERENCE BEARINGS WITH THE BOUNDARIES OF A LOT OR TRACT SHALL BE LIMITED TO WITHIN THE 20' BEAR WARD OF THE CORNER.
6. FROM ACCESS TO 30' BEAR STRONG IN CASES SHALL BE LIMITED TO WITHIN 10' INCH CUT.
7. ALL DIMENSIONS SHALL BE MEASURED BY THE CENTERLINE UNLESS OTHERWISE SHOWN.
8. OUTLOTS "A", "B" AND "C" SHALL BE OWNED AND MAINTAINED SEPARATELY BY THE DEVELOPER OR HOMEOWNERS ASSOCIATION AND SHALL BE RECORDED BY A SEPARATE DOCUMENT.
9. DIMENSIONS, OUTLINES AND THE AREA OF THE TRACT ARE IDENTIFIED AS PERMANENT DRAINAGE AND STORM WATER MANAGEMENT BY THE DESIGNER.
10. THE AREA OF THE TRACT IS IDENTIFIED AS PERMANENT DRAINAGE AND STORM WATER MANAGEMENT BY THE DESIGNER.

