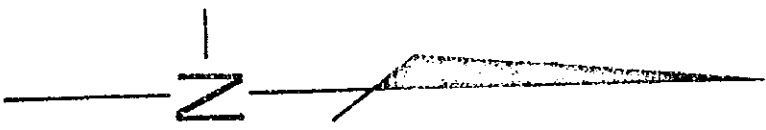


22 ENTERED IN NUMERICAL INDEX AND RECORDED IN THE REGISTER OF DEEDS OFFICE IN DOUGLAS COUNTY, NEBRASKA  
 19 APR 1975  
 G. HAROLD OSTLER, REGISTER OF DEEDS

# GLENBROOK ADDITION

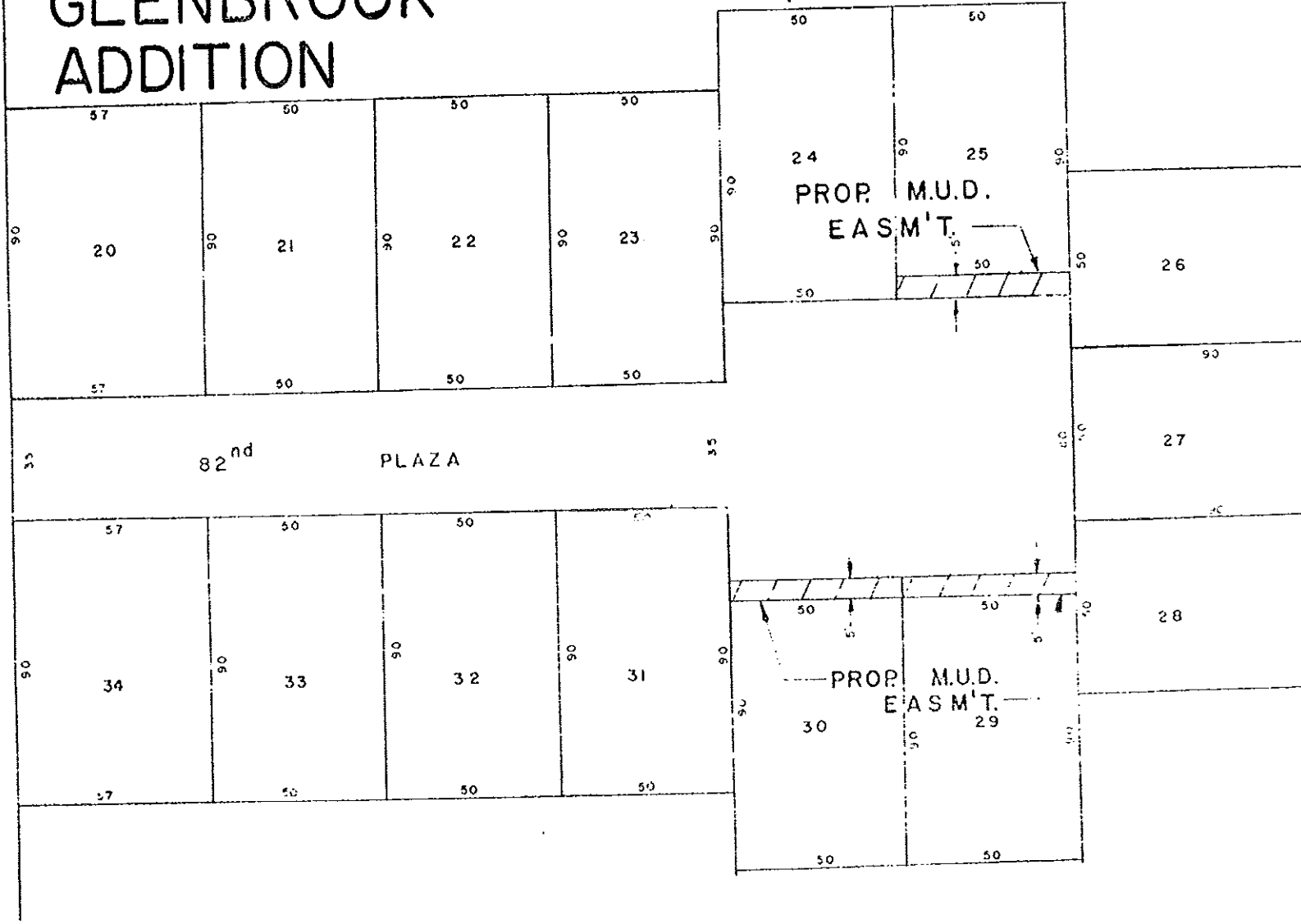


50

STREET

READ

50



METROPOLITAN  
 DISTRICT

EASEMENT  
 204<sup>th</sup> ST. N.  
 G.W.O. 2445

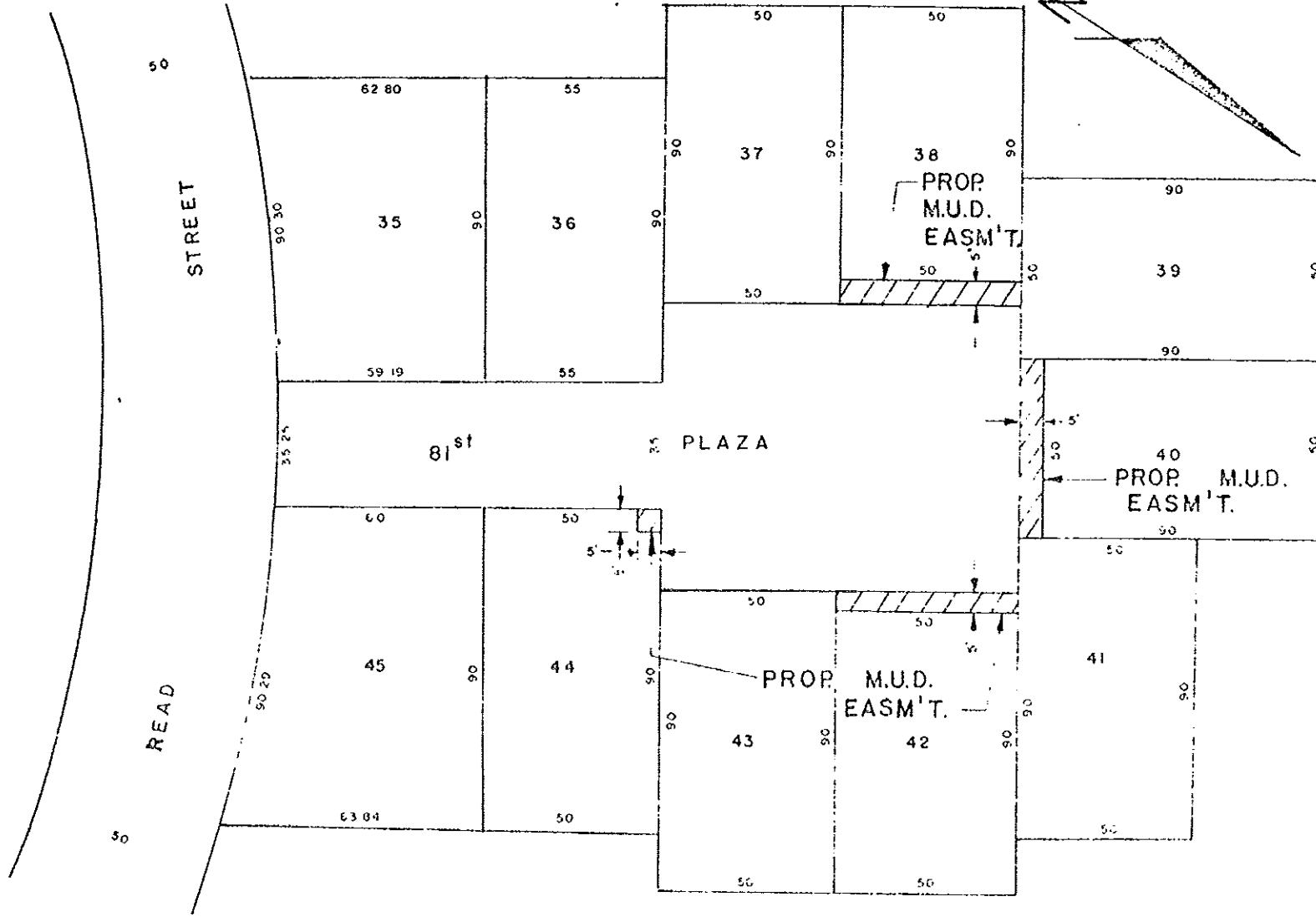
LAND OWNER DODGE  
 INVESTMENTS, LTD.  
 7204

LEGEND  
 PERMANENT EAS M'T.

PAGE 1 OF 2

BOOK 530 PAGE 604

# GLENBROOK ADDITION



NET AREA  
GLENBROOK  
ADDITION

EASEMENT  
ACQUISITION  
G.W.O. 2445

LAND OWNER DODGE  
INVESTMENTS, LTD  
7204

...

LEGEND  
PERMANENT EASMENT

PAGE 2 OF 2

...

22 ENTERED IN NUMERICAL INDEX AND RECORDED IN THE REGISTER OF DEEDS OFFICE IN DOUGLAS COUNTY, NEBRASKA  
12 DAY OF December 1913 AT 2:44 P.M. BY G. HAROLD OSTLER, REGISTER OF DEEDS  
1375

NET AREA  
GLENBROOK  
ADDITION