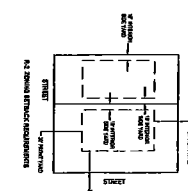
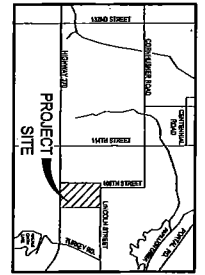


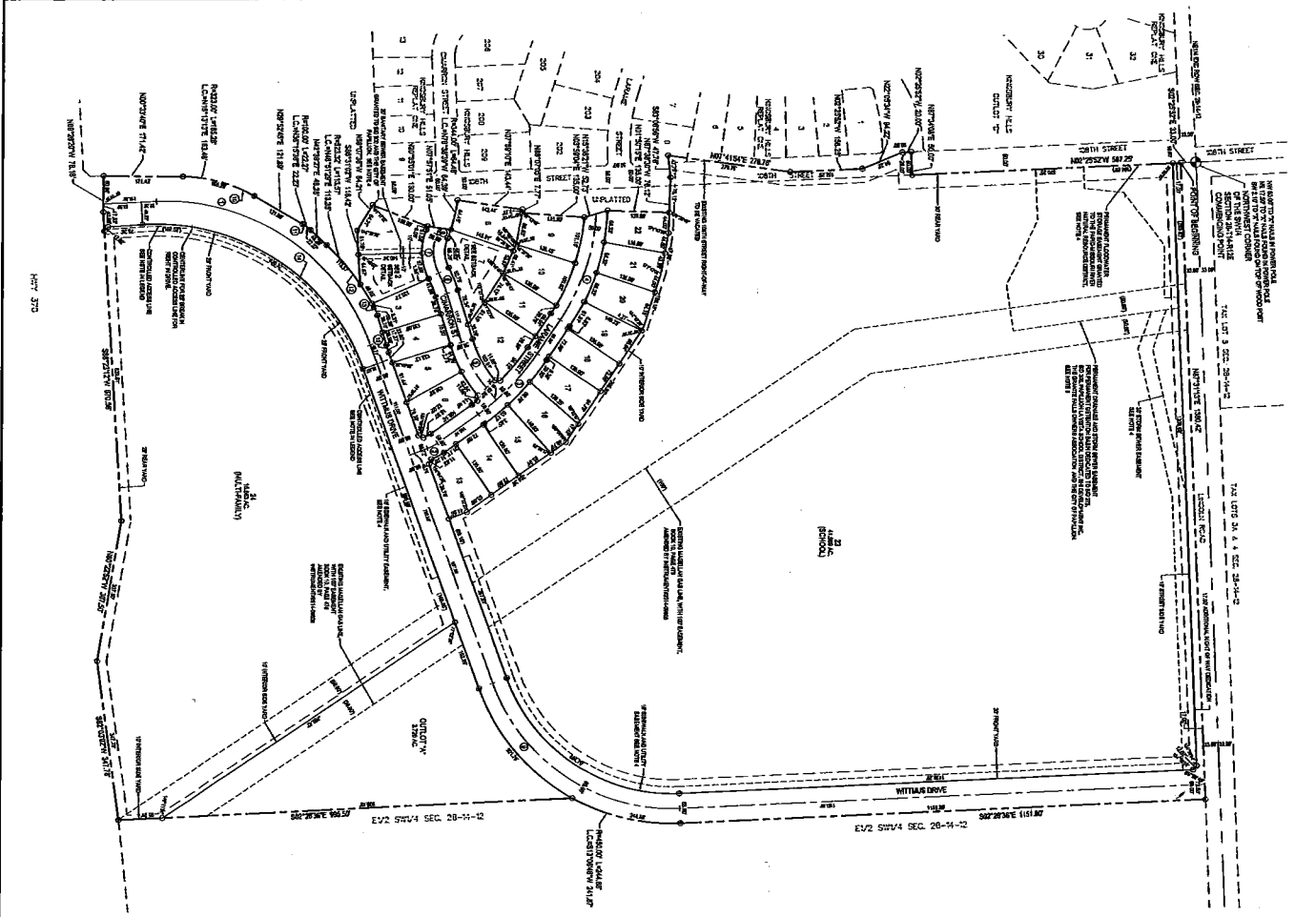
2015-1145A

# GRANITE FALLS

## LOTS 1 THRU 24 & OUTLOT "A"



A PORTION OF LAND LOCATED IN THE EAST PART OF THE 3RD & 4TH RANGES OF THE 3RD & 4TH TOWNSHIPS IN NORTH RANGE 12 EAST OF THE 5TH PA. STATE COUNTY, MINNESOTA.



LOT NO.	ACRES	AREA (SQ. FT.)
1	0.12	6,534
2	0.12	6,534
3	0.12	6,534
4	0.12	6,534
5	0.12	6,534
6	0.12	6,534
7	0.12	6,534
8	0.12	6,534
9	0.12	6,534
10	0.12	6,534
11	0.12	6,534
12	0.12	6,534
13	0.12	6,534
14	0.12	6,534
15	0.12	6,534
16	0.12	6,534
17	0.12	6,534
18	0.12	6,534
19	0.12	6,534
20	0.12	6,534
21	0.12	6,534
22	0.12	6,534
23	0.12	6,534
24	0.12	6,534
25	0.12	6,534
26	0.12	6,534
27	0.12	6,534
28	0.12	6,534
29	0.12	6,534
30	0.12	6,534
31	0.12	6,534
32	0.12	6,534
33	0.12	6,534
34	0.12	6,534
35	0.12	6,534
36	0.12	6,534
37	0.12	6,534
38	0.12	6,534
39	0.12	6,534
40	0.12	6,534
41	0.12	6,534
42	0.12	6,534
43	0.12	6,534
44	0.12	6,534
45	0.12	6,534
46	0.12	6,534
47	0.12	6,534
48	0.12	6,534
49	0.12	6,534
50	0.12	6,534
51	0.12	6,534
52	0.12	6,534
53	0.12	6,534
54	0.12	6,534
55	0.12	6,534
56	0.12	6,534
57	0.12	6,534
58	0.12	6,534
59	0.12	6,534
60	0.12	6,534
61	0.12	6,534
62	0.12	6,534
63	0.12	6,534
64	0.12	6,534
65	0.12	6,534
66	0.12	6,534
67	0.12	6,534
68	0.12	6,534
69	0.12	6,534
70	0.12	6,534
71	0.12	6,534
72	0.12	6,534
73	0.12	6,534
74	0.12	6,534
75	0.12	6,534
76	0.12	6,534
77	0.12	6,534
78	0.12	6,534
79	0.12	6,534
80	0.12	6,534
81	0.12	6,534
82	0.12	6,534
83	0.12	6,534
84	0.12	6,534
85	0.12	6,534
86	0.12	6,534
87	0.12	6,534
88	0.12	6,534
89	0.12	6,534
90	0.12	6,534
91	0.12	6,534
92	0.12	6,534
93	0.12	6,534
94	0.12	6,534
95	0.12	6,534
96	0.12	6,534
97	0.12	6,534
98	0.12	6,534
99	0.12	6,534
100	0.12	6,534

CONTRACT NO.	DATE	BUYER	SELLER
1	1/15/15	...	...
2	2/15/15	...	...
3	3/15/15	...	...
4	4/15/15	...	...
5	5/15/15	...	...
6	6/15/15	...	...
7	7/15/15	...	...
8	8/15/15	...	...
9	9/15/15	...	...
10	10/15/15	...	...
11	11/15/15	...	...
12	12/15/15	...	...
13	1/15/16	...	...
14	2/15/16	...	...
15	3/15/16	...	...
16	4/15/16	...	...
17	5/15/16	...	...
18	6/15/16	...	...
19	7/15/16	...	...
20	8/15/16	...	...
21	9/15/16	...	...
22	10/15/16	...	...
23	11/15/16	...	...
24	12/15/16	...	...
25	1/15/17	...	...
26	2/15/17	...	...
27	3/15/17	...	...
28	4/15/17	...	...
29	5/15/17	...	...
30	6/15/17	...	...
31	7/15/17	...	...
32	8/15/17	...	...
33	9/15/17	...	...
34	10/15/17	...	...
35	11/15/17	...	...
36	12/15/17	...	...
37	1/15/18	...	...
38	2/15/18	...	...
39	3/15/18	...	...
40	4/15/18	...	...
41	5/15/18	...	...
42	6/15/18	...	...
43	7/15/18	...	...
44	8/15/18	...	...
45	9/15/18	...	...
46	10/15/18	...	...
47	11/15/18	...	...
48	12/15/18	...	...
49	1/15/19	...	...
50	2/15/19	...	...
51	3/15/19	...	...
52	4/15/19	...	...
53	5/15/19	...	...
54	6/15/19	...	...
55	7/15/19	...	...
56	8/15/19	...	...
57	9/15/19	...	...
58	10/15/19	...	...
59	11/15/19	...	...
60	12/15/19	...	...
61	1/15/20	...	...
62	2/15/20	...	...
63	3/15/20	...	...
64	4/15/20	...	...
65	5/15/20	...	...
66	6/15/20	...	...
67	7/15/20	...	...
68	8/15/20	...	...
69	9/15/20	...	...
70	10/15/20	...	...
71	11/15/20	...	...
72	12/15/20	...	...
73	1/15/21	...	...
74	2/15/21	...	...
75	3/15/21	...	...
76	4/15/21	...	...
77	5/15/21	...	...
78	6/15/21	...	...
79	7/15/21	...	...
80	8/15/21	...	...
81	9/15/21	...	...
82	10/15/21	...	...
83	11/15/21	...	...
84	12/15/21	...	...
85	1/15/22	...	...
86	2/15/22	...	...
87	3/15/22	...	...
88	4/15/22	...	...
89	5/15/22	...	...
90	6/15/22	...	...
91	7/15/22	...	...
92	8/15/22	...	...
93	9/15/22	...	...
94	10/15/22	...	...
95	11/15/22	...	...
96	12/15/22	...	...
97	1/15/23	...	...
98	2/15/23	...	...
99	3/15/23	...	...
100	4/15/23	...	...

**NOTICE:** THIS PLAN IS A PRELIMINARY PLAN AND IS SUBJECT TO THE REVIEW AND APPROVAL OF THE BOARD OF SUPERVISORS OF GRANITE FALLS. THE BOARD OF SUPERVISORS HAS THE RIGHT TO APPROVE, REJECT, OR MODIFY THIS PLAN. THE GRANTEE ACCEPTS THE RISK OF LOSS OF THIS PLAN IF IT IS NOT APPROVED BY THE BOARD OF SUPERVISORS.

**LEGAL DESCRIPTION:** A PORTION OF LAND LOCATED IN THE EAST PART OF THE 3RD & 4TH RANGES OF THE 3RD & 4TH TOWNSHIPS IN NORTH RANGE 12 EAST OF THE 5TH PA. STATE COUNTY, MINNESOTA.

**DEED RECORDS:** DEED RECORDS IN GRANITE FALLS, MINNESOTA, SHOWING THE CHAIN OF TITLE TO THE LAND DESCRIBED IN THIS PLAN.

**ADJACENT OWNERS:** THE GRANTEE HAS BEEN ADVISED OF THE INTERESTS OF THE ADJACENT OWNERS AND HAS AGREED TO THE BOUNDARIES SHOWN ON THIS PLAN.

**CONVEYANCE:** THE GRANTEE HEREBY CONVEYS TO THE GRANTEE ALL THE RIGHTS AND INTERESTS IN THE LAND DESCRIBED IN THIS PLAN.

**WARRANTY:** THE GRANTEE WARRANTS THAT THE LAND DESCRIBED IN THIS PLAN IS FREE FROM ALL ENCUMBRANCES, EXCEPT THOSE SHOWN ON THIS PLAN.

**EXHIBITS:** EXHIBIT A: A PORTION OF THE ORIGINAL SURVEY MAP SHOWING THE LOCATION OF THE LAND DESCRIBED IN THIS PLAN. EXHIBIT B: A PORTION OF THE ORIGINAL DEED RECORDS SHOWING THE CHAIN OF TITLE TO THE LAND DESCRIBED IN THIS PLAN.

**APPROVALS:** APPROVED BY THE BOARD OF SUPERVISORS OF GRANITE FALLS, MINNESOTA, ON THIS 15TH DAY OF JANUARY, 2015.

**GRANTEE:** [Name]

**GRANTOR:** [Name]