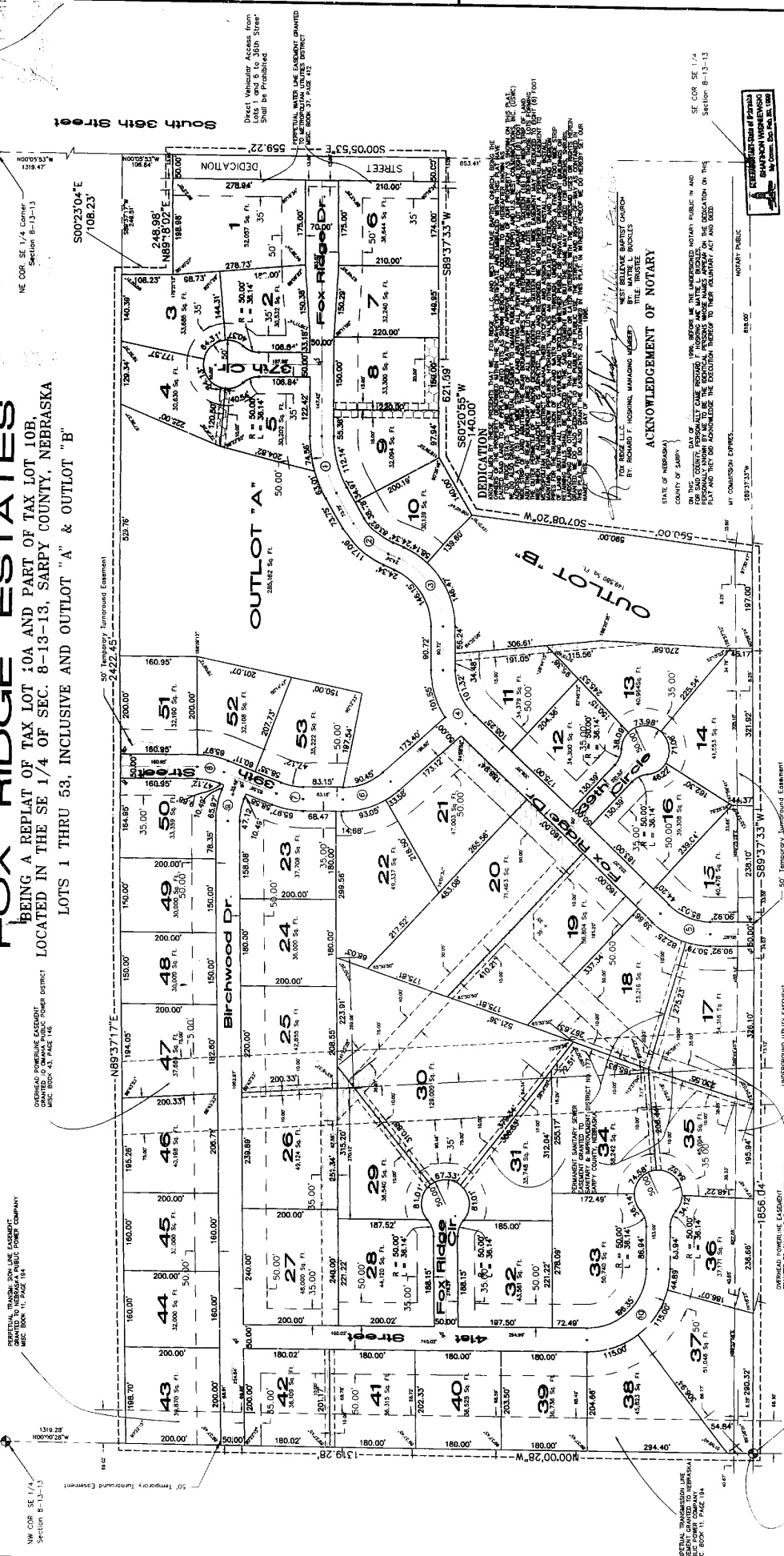


96-13864

10-015561

**FOX RIDGE ESTATES**  
BEING A REPLAT OF TAX LOT 10A AND PART OF TAX LOT 10B,  
LOCATED IN THE SE 1/4 OF SEC. 8-13-13, SARP COUNTY, NEBRASKA  
LOTS 1 THRU 53, INCLUSIVE AND OUTLOT "A" & OUTLOT "B"



**ACKNOWLEDGEMENT OF NOTARY**  
STATE OF NEBRASKA  
COUNTY OF SARPY  
I, *[Signature]*, Notary Public for the State of Nebraska, do hereby certify that the foregoing plat was duly recorded in the public records of Sarpy County, Nebraska, on this 13th day of December, 1998, and that the same is a true and correct copy of the original as filed with me for recording.

PERMIT FROM DRAINAGE EASEMENTS GRANTED TO THE FOX RIDGE HOMEOWNER'S ASSOCIATION AND ASSASS SAID EASEMENTS TO BE MAINTAINED BY THE INDIVIDUAL HOMEOWNER, AND THE HOMEOWNERS ASSOCIATION AS SET FORTH IN THE DECLARATION OF COVENANTS, CONDITIONS AND RESTRICTIONS OF THE STREET SIDE OF ALL LOTS. ADDITIONAL PERMANENT STORM DRAINAGE EASEMENTS ALONG THE FRONT, LEFT AND RIGHT SIDES OF ALL LOTS, AS SHOWN ON THIS PLAT, SHALL BE MAINTAINED BY THE INDIVIDUAL HOMEOWNERS, AS WELL AS ANY OTHER OBSTRUCTION TO THE DRAINAGEWAY. SHALL BE PROHIBITED IN THE LIMITS OF THE EASEMENTS.

**CENTERLINE CURVE DATA**

CURVE	RADIUS	LENGTH	ANGULAR	CHORD	DELTA
1	150.00'	125.97'	63.14°	123.77'	26.33°
2	150.00'	125.97'	63.14°	123.77'	26.33°
3	150.00'	125.97'	63.14°	123.77'	26.33°
4	150.00'	125.97'	63.14°	123.77'	26.33°
5	150.00'	125.97'	63.14°	123.77'	26.33°
6	150.00'	125.97'	63.14°	123.77'	26.33°
7	150.00'	125.97'	63.14°	123.77'	26.33°
8	150.00'	125.97'	63.14°	123.77'	26.33°
9	150.00'	125.97'	63.14°	123.77'	26.33°
10	150.00'	125.97'	63.14°	123.77'	26.33°

NEARLY ALL LOTS ARE SHOWN WITH 50' WIDE DRIVEWAYS. THE DRIVEWAYS ARE TO BE MAINTAINED BY THE INDIVIDUAL HOMEOWNERS. THE DRIVEWAYS ARE TO BE MAINTAINED BY THE INDIVIDUAL HOMEOWNERS. THE DRIVEWAYS ARE TO BE MAINTAINED BY THE INDIVIDUAL HOMEOWNERS.

**SURVEYOR'S CERTIFICATE**  
I, RONALD D. HILL, a duly licensed and sworn-in Surveyor for the State of Nebraska, do hereby certify that I have personally supervised and observed the surveying work shown on this plat, and that the same is a true and correct copy of the original as filed with me for recording.

**APPROVAL OF BELLEVUE PLANNING COMMISSION**  
THIS PLAT FOR FOX RIDGE ESTATES WAS APPROVED BY THE BELLEVUE PLANNING COMMISSION ON THIS 13th DAY OF DECEMBER, 1998.

**APPROVAL OF BELLEVUE CITY COUNCIL**  
THIS PLAT FOR FOX RIDGE ESTATES WAS APPROVED BY THE BELLEVUE CITY COUNCIL ON THIS 13th DAY OF DECEMBER, 1998.

**COUNTY TREASURER'S CERTIFICATE**  
I, *[Signature]*, County Treasurer for Sarpy County, Nebraska, do hereby certify that the taxes due on this plat have been paid in full to the County Treasurer's Office on this 13th day of December, 1998.

**REVIEW OF SARPY COUNTY SURVEYOR**  
I, *[Signature]*, Sarpy County Surveyor, do hereby certify that the surveying work shown on this plat is in accordance with the laws and regulations of the State of Nebraska.

NEBRASKA  
COUNTY OF SARPY  
SURVEYOR  
RONALD D. HILL  
LS 378

NEBRASKA  
COUNTY OF SARPY  
COUNTY TREASURER  
*[Signature]*  
LS 379

NEBRASKA  
COUNTY OF SARPY  
PLANNING COMMISSION  
*[Signature]*  
LS 380

NEBRASKA  
COUNTY OF SARPY  
CITY COUNCIL  
*[Signature]*  
LS 381

NEBRASKA  
COUNTY OF SARPY  
SURVEYOR  
*[Signature]*  
LS 382

NEBRASKA  
COUNTY OF SARPY  
SURVEYOR  
RONALD D. HILL  
LS 378

NEBRASKA  
COUNTY OF SARPY  
COUNTY TREASURER  
*[Signature]*  
LS 379

NEBRASKA  
COUNTY OF SARPY  
PLANNING COMMISSION  
*[Signature]*  
LS 380

NEBRASKA  
COUNTY OF SARPY  
CITY COUNCIL  
*[Signature]*  
LS 381

NEBRASKA  
COUNTY OF SARPY  
SURVEYOR  
*[Signature]*  
LS 382